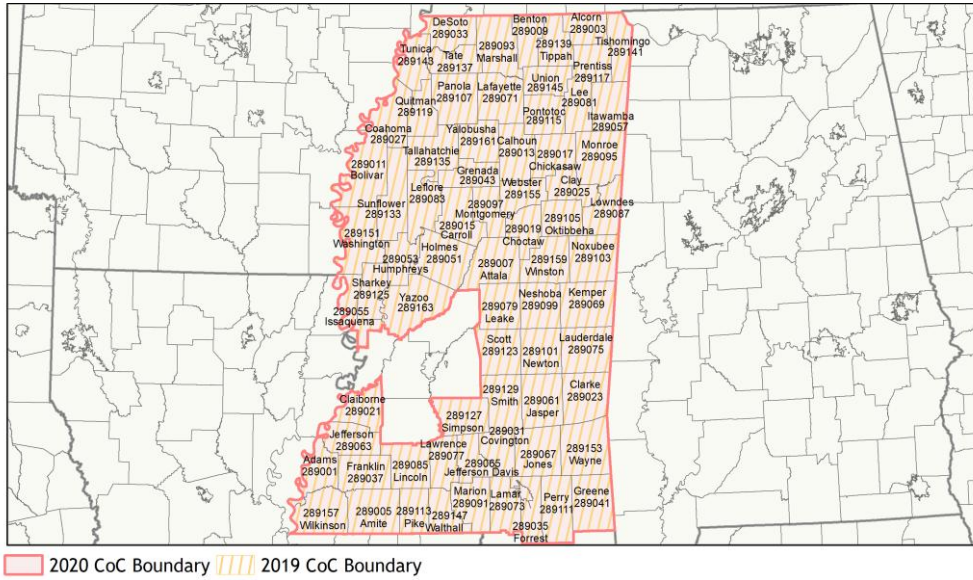
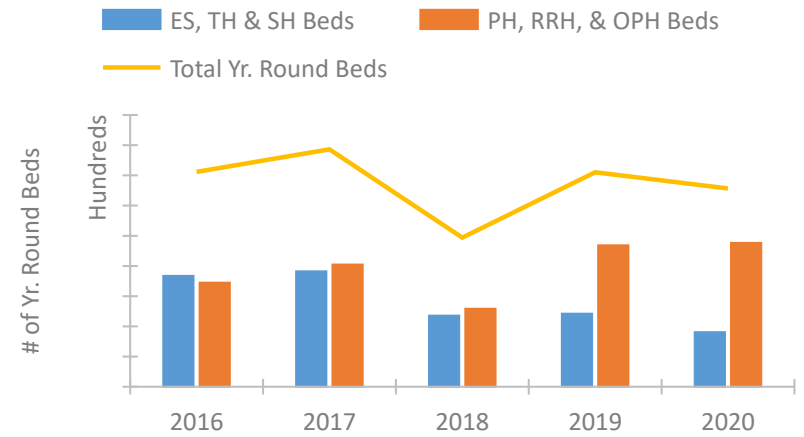


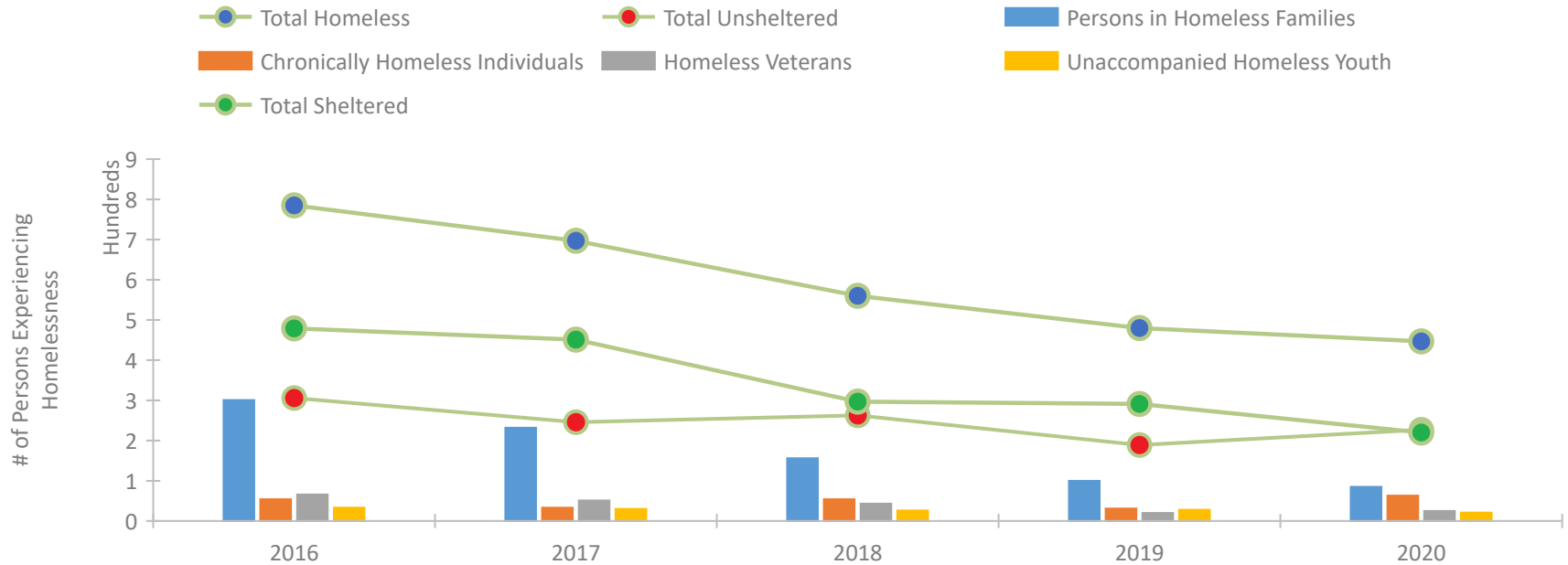
CoC Performance Profile MS-501 Mississippi Balance of State CoC



Housing Inventory Count by Program Type

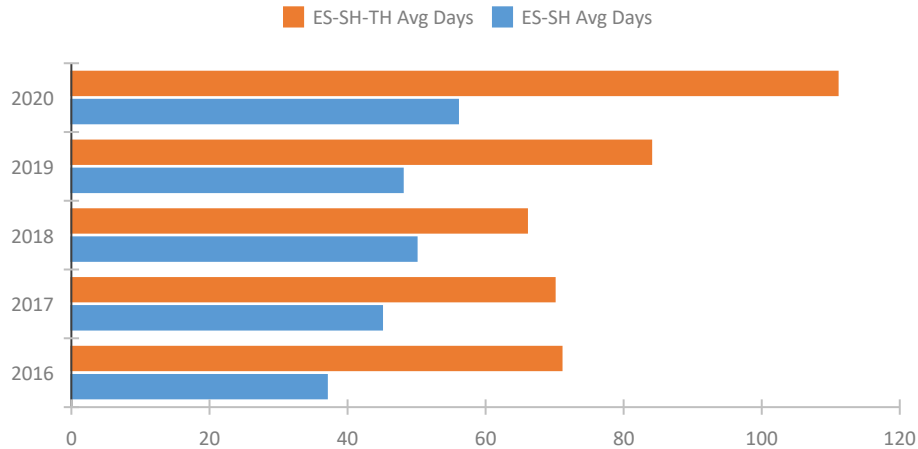


Homeless Population – Point-in-Time (PIT) Count

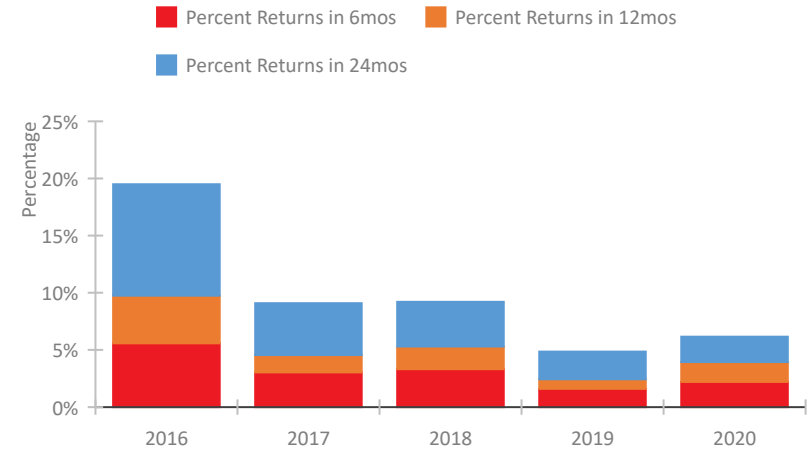


CoC Performance Profile MS-501 Mississippi Balance of State CoC

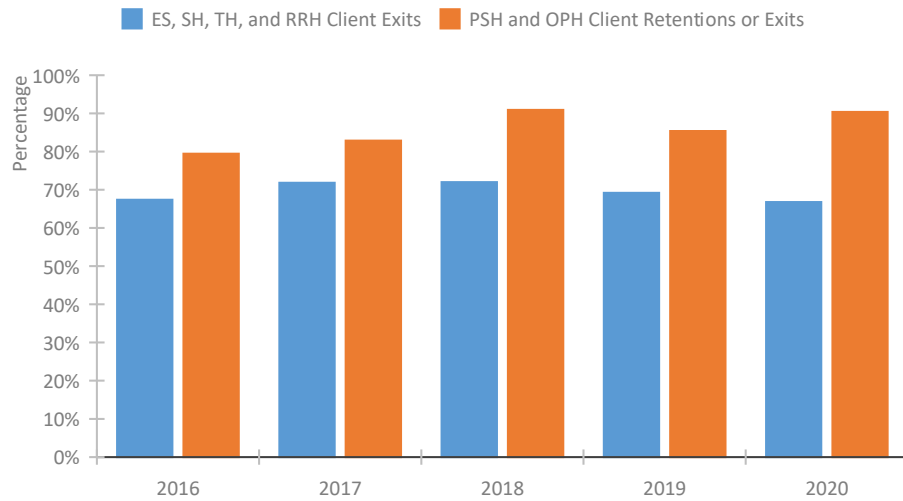
Length of Time Homeless



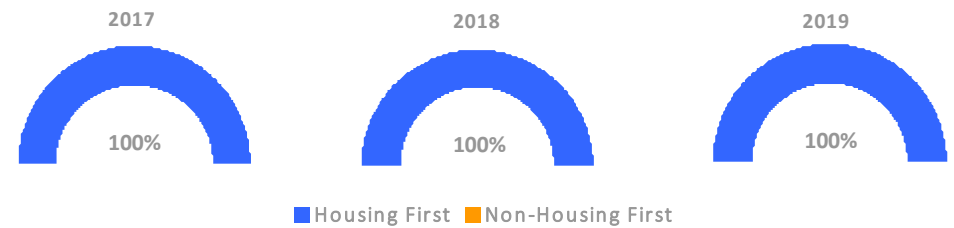
Returns to Homelessness Over Time



Exits to Permanent Housing by Program Type



Proportion of Housing First Projects by Year*



Number of Projects by Year			
	2017	2018	2019
Housing First Projects	11	9	8
Non-Housing First Projects	0	0	0

*In 2020 HUD awarded renewal projects noncompetitively, therefore no new data was collected and Housing First data remains the same from 2019 to 2020.

Data Summary: MS-501 Mississippi Balance of State CoC

Point-In-Time Count Summary

	2016	2017	2018	2019	2020	2019-20 Change	% Change
Number of Sheltered Persons in Families	203	191	98	98	81	-17	-17%
Number of Unsheltered Persons in Families	98	41	58	2	4	2	100%
Number of Sheltered Individuals	276	260	199	193	139	-54	-28%
Number of Unsheltered Individuals	208	205	205	187	223	36	19%
Total Homeless Persons	785	697	560	480	447	-33	-7%
Number of Sheltered Families	59	53	33	29	25	-4	-14%
Number of Unsheltered Families	29	13	17	1	1	0	-0%
Number of Total Families	88	66	50	30	26	-4	-13%
Sheltered Chronically Homeless Individuals	17	9	13	2	0	-2	-100%
Unsheltered Chronically Homeless Individuals	37	24	41	29	63	34	117%
Total Chronically Homeless Individuals	54	33	54	31	63	32	103%
Sheltered Veterans	37	38	27	13	13	0	-0%
Unsheltered Veterans	29	13	16	7	12	5	71%
Total Veterans	66	51	43	20	25	5	25%
Sheltered Unaccompanied Youth (up to 24)	19	20	16	20	15	-5	-25%
Unsheltered Unaccompanied Youth (up to 24)	14	10	10	8	6	-2	-25%
Total Unaccompanied Youth (up to 24)	33	30	26	28	21	-7	-25%

System Performance Measures Summary

	2016	2017	2018	2018	2020	2019-20 Change	% Change
Average Length of Time Homeless (days)	71	70	66	84	111	27	32.1%
Rate People Return to Homelessness in 6 Months	5.6%	3.0%	3.3%	1.6%	2.2%	0.6%	N/A
Number of People who are Homeless for the First Time	2,370	2,039	1,700	1,345	1,050	-295	-21.9%
Rate People Exit from ES, SH, TH, and RRH to PH	67.4%	71.8%	72.0%	69.2%	66.8%	-2.4%	N/A
Rate People in PSH and OPH Retain or Exit to PH	79.5%	82.9%	90.9%	85.4%	90.4%	5%	N/A

Housing Inventory Count Summary

	2016	2017	2018	2019	2020	2019-20 Change	% Change
Emergency Shelter (ES)	443	545	362	362	320	-42	-12%
Transitional Housing (TH)	291	219	109	122	41	-81	-66%
Permanent Supportive Housing (PSH)	176	138	119	195	199	4	2%
Rapid Re-Housing (RRH)	513	671	398	644	679	35	5%
Other Permanent Housing (OPH)	--	--	--	98	75	-23	-23%

Award Summary

	2016	2017	2018	2019	2020	2019-20 Change	% Change
Continuum of Care (CoC)	\$3,241,980	\$3,274,205	\$2,785,536	\$3,088,029	\$3,079,021	(\$9,008)	-0%
ESG (MS state recipient - no direct funding)	--	--	--	--	\$2,369,654	--	--