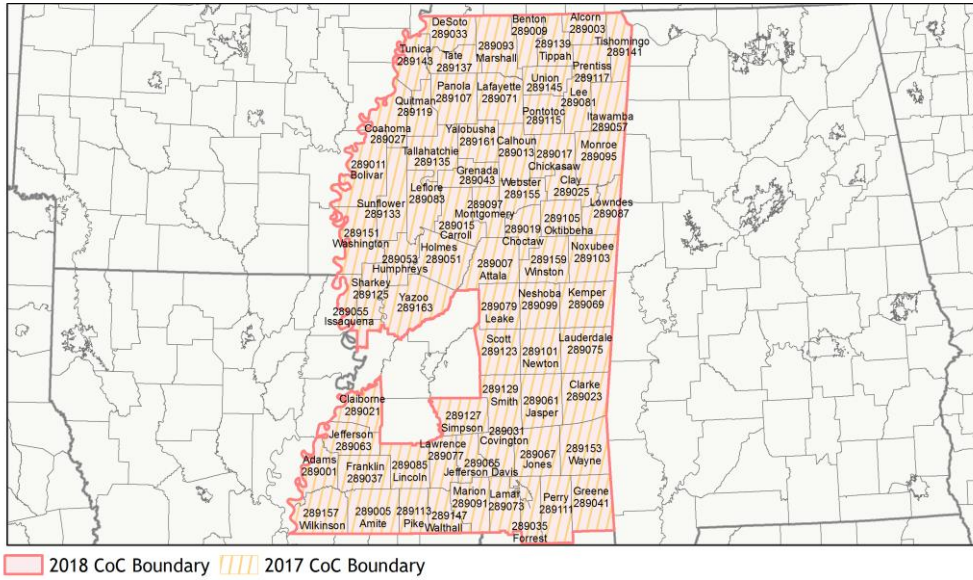
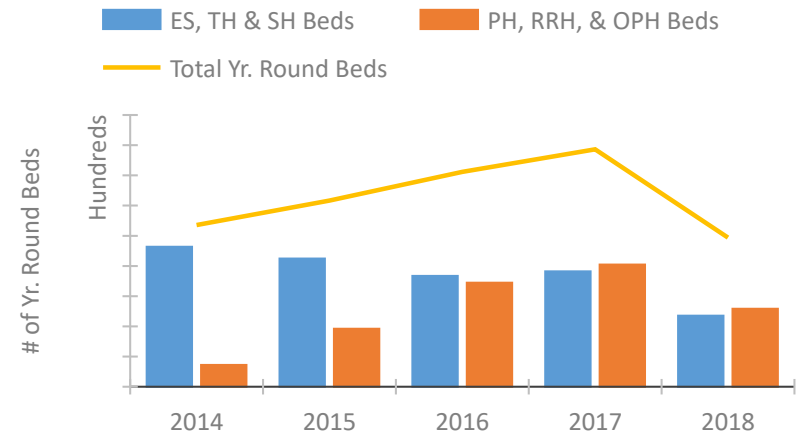


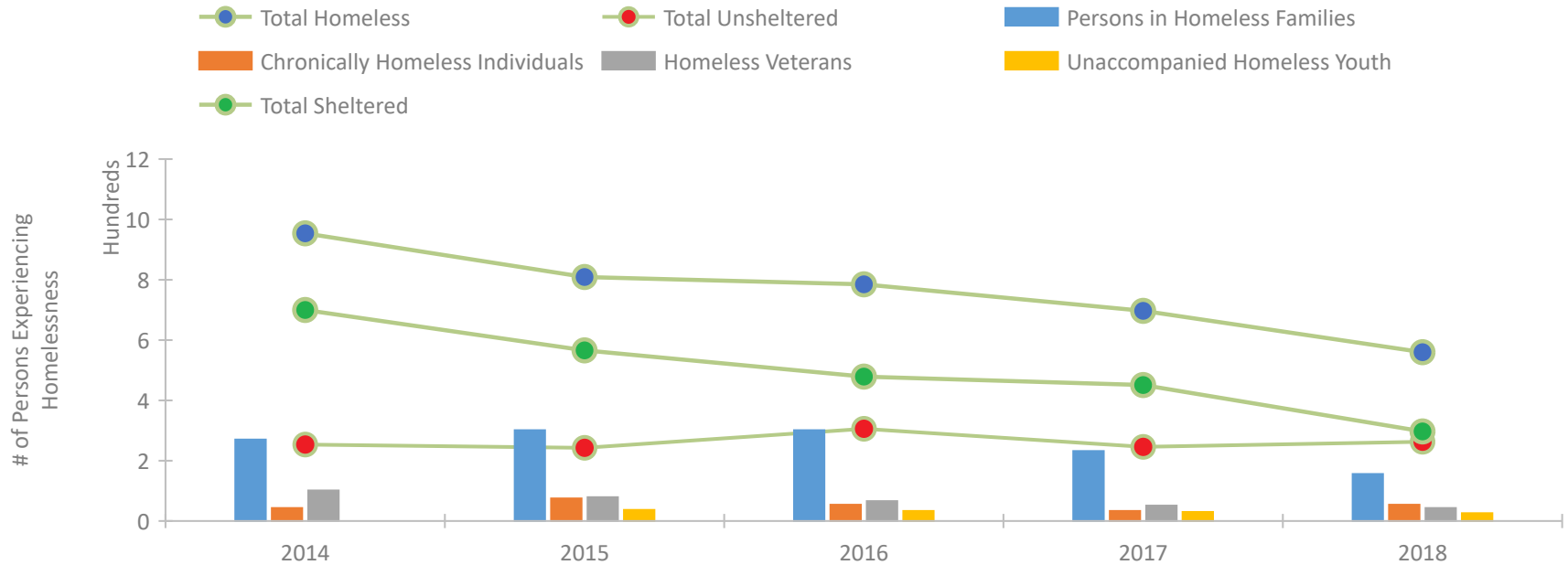
CoC Performance Profile MS-501 Mississippi Balance of State CoC



Housing Inventory Count by Program Type

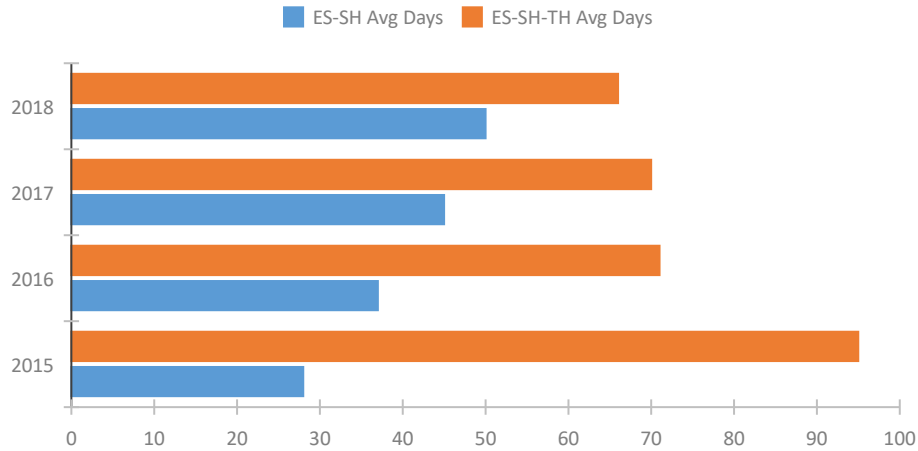


Homeless Population – Point-in-Time (PIT) Count

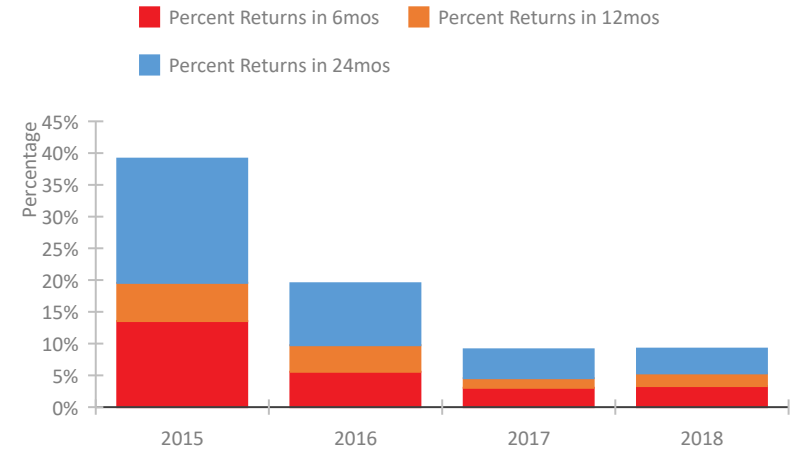


CoC Performance Profile MS-501 Mississippi Balance of State CoC

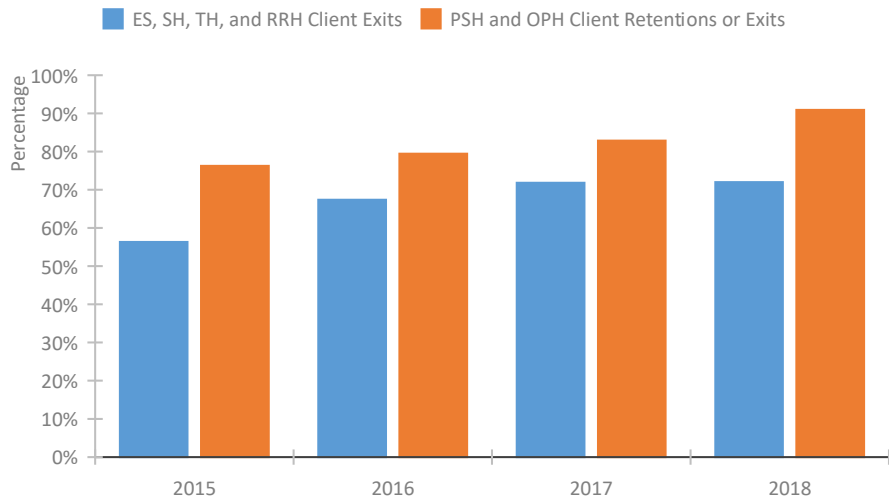
Length of Time Homeless



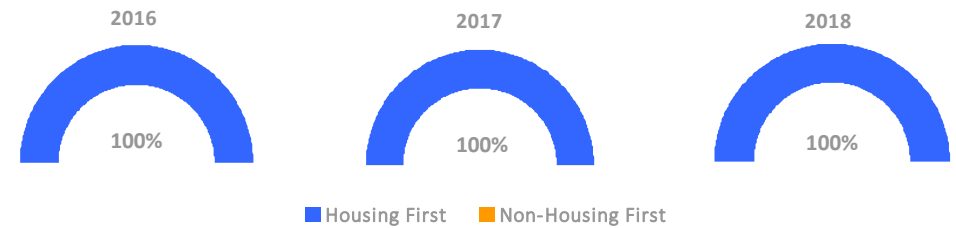
Returns to Homelessness Over Time



Exits to Permanent Housing by Program Type



Proportion of Housing First Projects by Year



Number of Projects by Year

	2016	2017	2018
Housing First Projects	12	11	9
Non-Housing First Projects	0	0	0

Data Summary: MS-501 Mississippi Balance of State CoC

Point-In-Time Count Summary

	2014	2015	2016	2017	2018	2017-18 Change	% Change
Number of Sheltered Persons in Families	230	252	203	191	98	-93	-49%
Number of Unsheltered Persons in Families	40	49	98	41	58	17	41%
Number of Sheltered Individuals	470	314	276	260	199	-61	-23%
Number of Unsheltered Individuals	214	194	208	205	205	0	0%
Total Homeless Persons	954	809	785	697	560	-137	-20%
Number of Sheltered Families	76	78	59	53	33	-20	-38%
Number of Unsheltered Families	14	12	29	13	17	4	31%
Number of Total Families	90	90	88	66	50	-16	-24%
Sheltered Chronically Homeless Individuals	19	25	17	9	13	4	44%
Unsheltered Chronically Homeless Individuals	24	50	37	24	41	17	71%
Total Chronically Homeless Individuals	43	75	54	33	54	21	64%
Sheltered Veterans	87	58	37	38	27	-11	-29%
Unsheltered Veterans	14	21	29	13	16	3	23%
Total Veterans	101	79	66	51	43	-8	-16%
Sheltered Unaccompanied Youth (up to 24)	--	24	19	20	16	-4	-20%
Unsheltered Unaccompanied Youth (up to 24)	--	13	14	10	10	0	0%
Total Unaccompanied Youth (up to 24)	--	37	33	30	26	-4	-13%

System Performance Measures Summary

	2014	2015	2016	2017	2018	2017-18 Change	% Change
Average Length of Time Homeless (days)	N/A	95	71	70	66	-4	-5.7%
Rate People Return to Homelessness in 6 Months	N/A	13.6%	5.6%	3.0%	3.3%	0.3%	N/A
Number of People who are Homeless for the First Time	N/A	2404	2370	2039	1700	-339	-16.6%
Rate People Exit from ES, SH, TH, and RRH to PH	N/A	56.4%	67.4%	71.8%	72.0%	0.2%	N/A
Rate People in PSH and OPH Retain or Exit to PH	N/A	76.3%	79.5%	82.9%	90.9%	8%	N/A

Housing Inventory Count Summary

	2014	2015	2016	2017	2018	2017-18 Change	% Change
Emergency Shelter (ES)	487	465	443	545	362	-183	-34%
Transitional Housing (TH)	440	384	291	219	109	-110	-50%
Permanent Supportive Housing (PSH)	143	184	176	138	119	-19	-14%
Rapid Re-Housing (RRH)	1	200	513	671	398	-273	-41%

Award Summary

	2014	2015	2016	2017	2018	2017-18 Change	% Change
Continuum of Care (CoC)	\$3,257,358	\$3,304,285	\$3,241,980	\$3,274,205	\$2,785,536	(\$488,669)	-15%