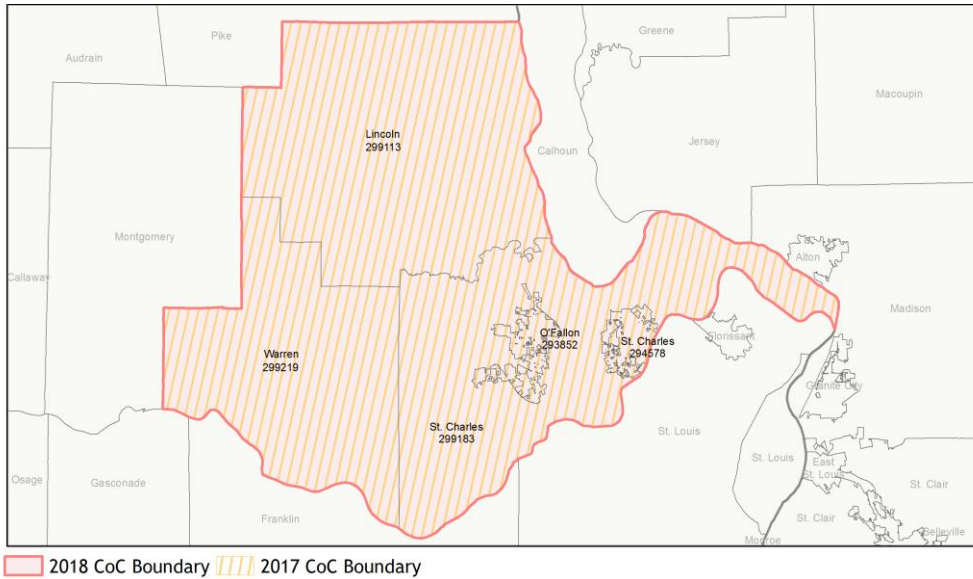
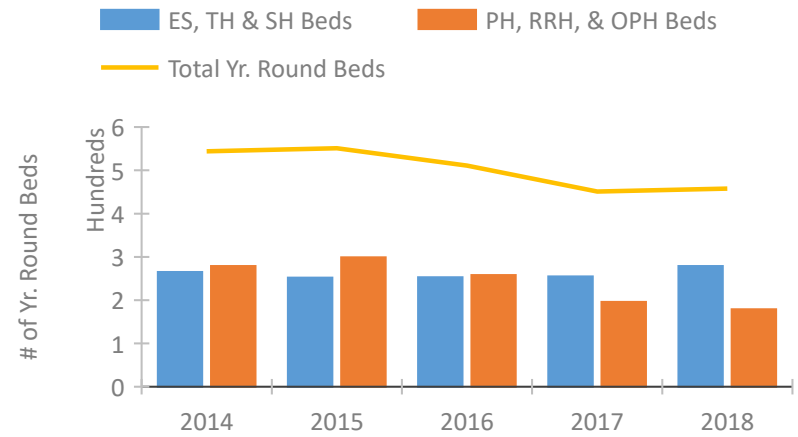


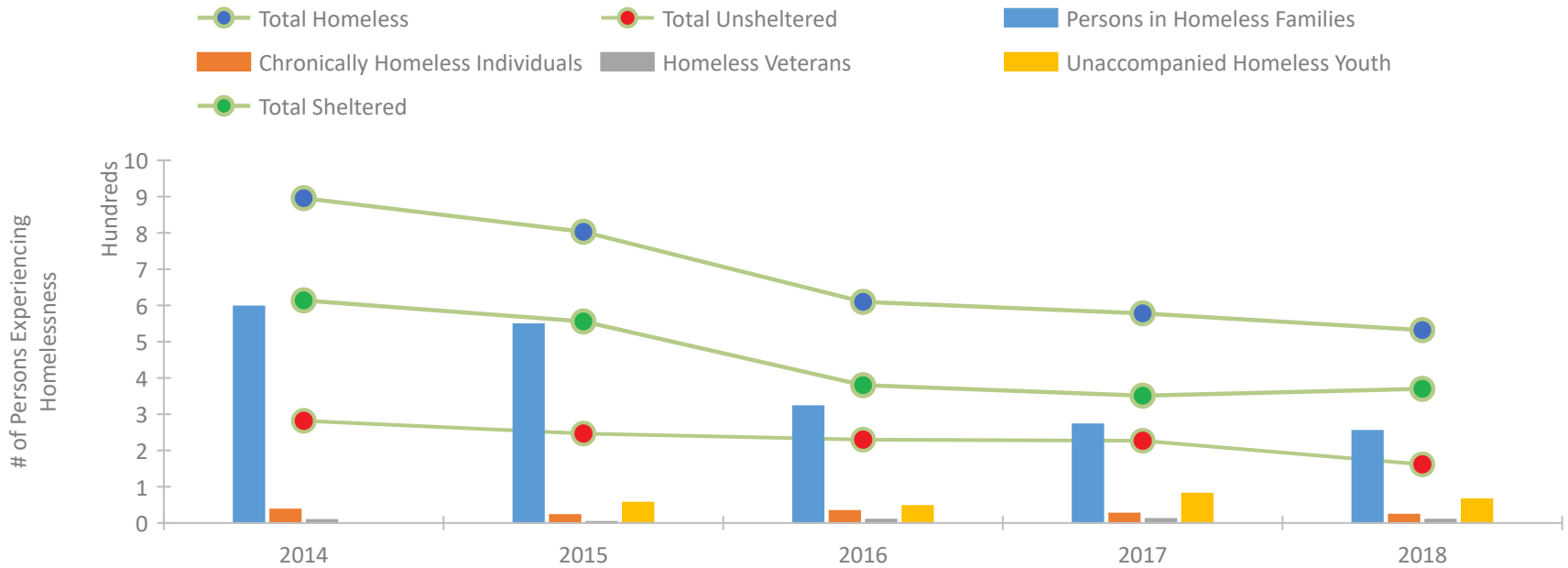
CoC Performance Profile MO-503 St. Charles City & County, Lincoln, Warren Counties CoC



Housing Inventory Count by Program Type

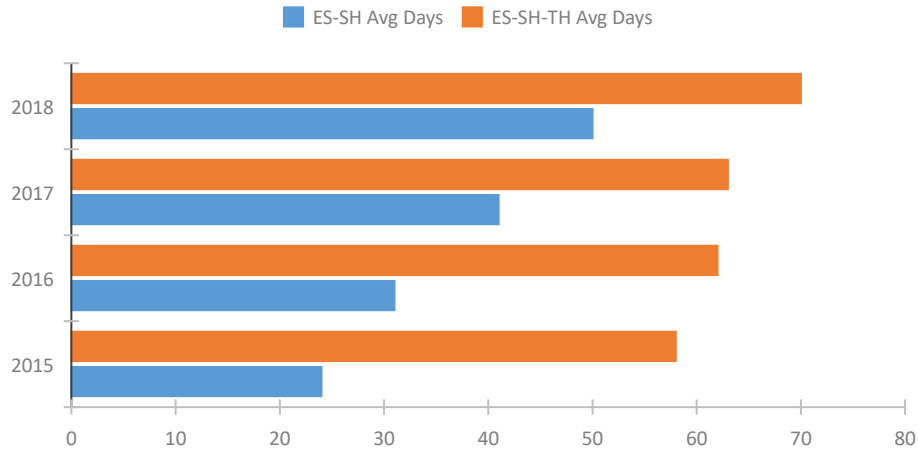


Homeless Population – Point-in-Time (PIT) Count

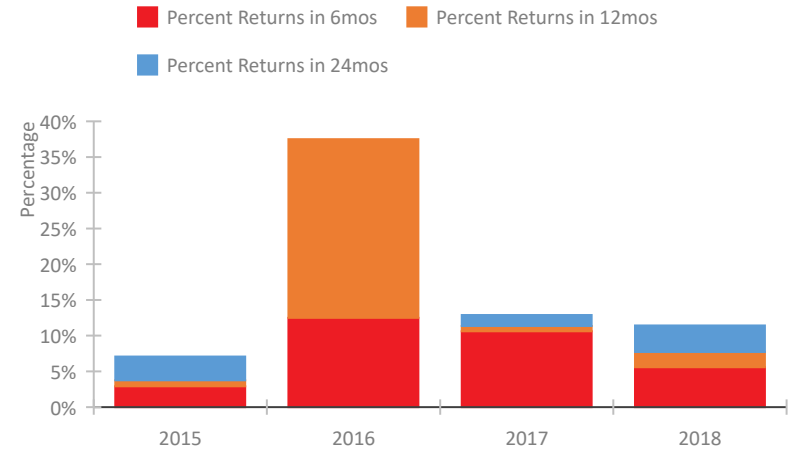


CoC Performance Profile MO-503 St. Charles City & County, Lincoln, Warren Counties CoC

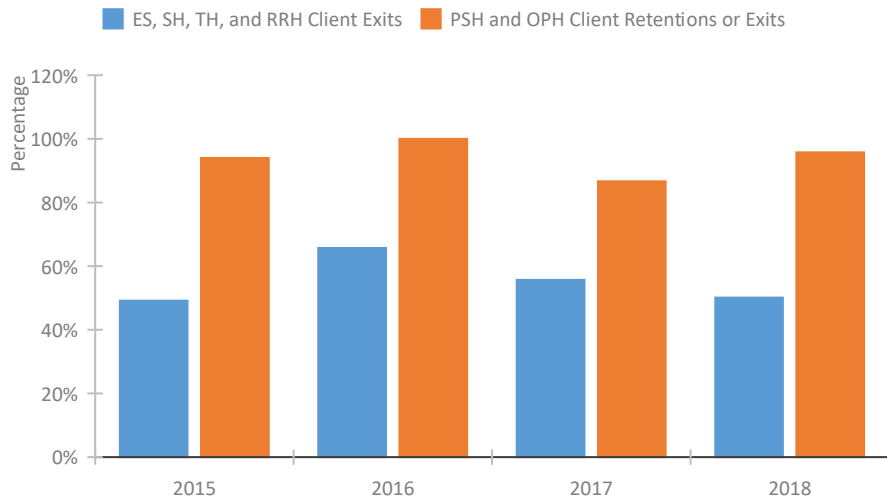
Length of Time Homeless



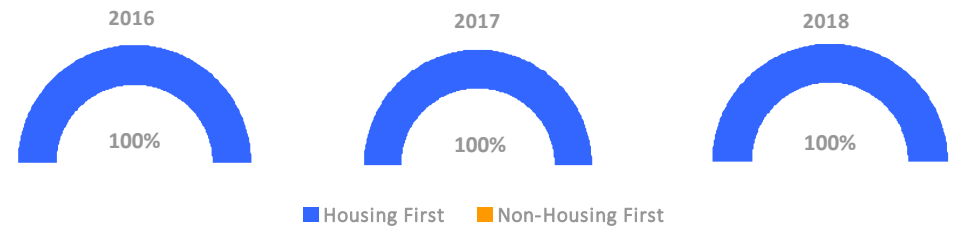
Returns to Homelessness Over Time



Exits to Permanent Housing by Program Type



Proportion of Housing First Projects by Year



Number of Projects by Year

	2016	2017	2018
Housing First Projects	2	4	4
Non-Housing First Projects	0	0	0

Data Summary: MO-503 St. Charles City & County, Lincoln, Warren Counties CoC

Point-In-Time Count Summary

	2014	2015	2016	2017	2018	2017-18 Change	% Change
Number of Sheltered Persons in Families	449	420	232	206	245	39	19%
Number of Unsheltered Persons in Families	148	128	90	66	9	-57	-86%
Number of Sheltered Individuals	165	136	148	145	125	-20	-14%
Number of Unsheltered Individuals	134	119	140	161	153	-8	-5%
Total Homeless Persons	896	803	610	578	532	-46	-8%
Number of Sheltered Families	139	113	59	75	89	14	19%
Number of Unsheltered Families	43	40	18	16	3	-13	-81%
Number of Total Families	182	153	77	91	92	1	1%
Sheltered Chronically Homeless Individuals	11	7	7	12	8	-4	-33%
Unsheltered Chronically Homeless Individuals	26	15	26	14	15	1	7%
Total Chronically Homeless Individuals	37	22	33	26	23	-3	-12%
Sheltered Veterans	6	2	2	4	4	0	0%
Unsheltered Veterans	2	1	7	7	5	-2	-29%
Total Veterans	8	3	9	11	9	-2	-18%
Sheltered Unaccompanied Youth (up to 24)	--	36	29	61	40	-21	-34%
Unsheltered Unaccompanied Youth (up to 24)	--	20	18	20	25	5	25%
Total Unaccompanied Youth (up to 24)	--	56	47	81	65	-16	-20%

System Performance Measures Summary

	2014	2015	2016	2017	2018	2017-18 Change	% Change
Average Length of Time Homeless (days)	N/A	58	62	63	70	7	11.1%
Rate People Return to Homelessness in 6 Months	N/A	2.9%	12.5%	10.6%	5.6%	-5%	N/A
Number of People who are Homeless for the First Time	N/A	658	625	599	493	-106	-17.7%
Rate People Exit from ES, SH, TH, and RRH to PH	N/A	49.2%	65.7%	55.7%	50.1%	-5.6%	N/A
Rate People in PSH and OPH Retain or Exit to PH	N/A	94.0%	100.0%	86.7%	95.8%	9.1%	N/A

Housing Inventory Count Summary

	2014	2015	2016	2017	2018	2017-18 Change	% Change
Emergency Shelter (ES)	102	101	105	110	139	29	26%
Transitional Housing (TH)	163	151	148	145	140	-5	-3%
Permanent Supportive Housing (PSH)	74	69	83	79	45	-34	-43%
Rapid Re-Housing (RRH)	115	124	69	50	26	-24	-48%
Other Permanent Housing (OPH)	90	106	106	67	108	41	61%

Award Summary

	2014	2015	2016	2017	2018	2017-18 Change	% Change
Continuum of Care (CoC)	\$278,630	\$292,226	\$287,447	\$348,919	\$381,847	\$32,928	9%
ESG (MO state recipient - no direct funding)	\$2,366,520	\$2,566,752	\$2,559,566	\$2,930,526	\$2,554,390	(\$376,136)	-13%