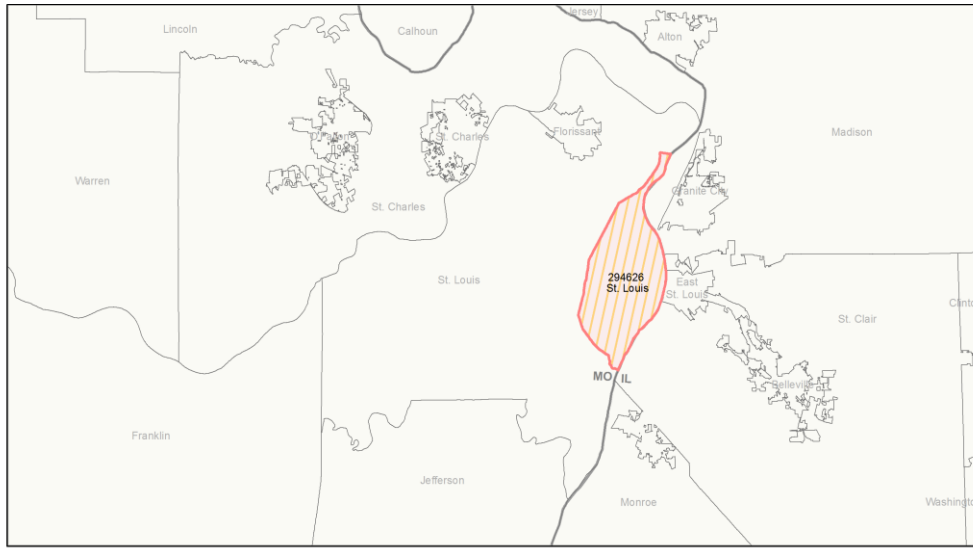
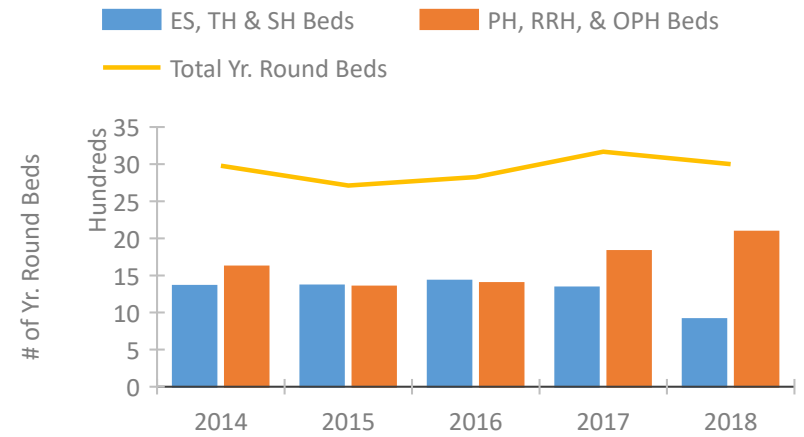


## CoC Performance Profile MO-501 St. Louis City CoC

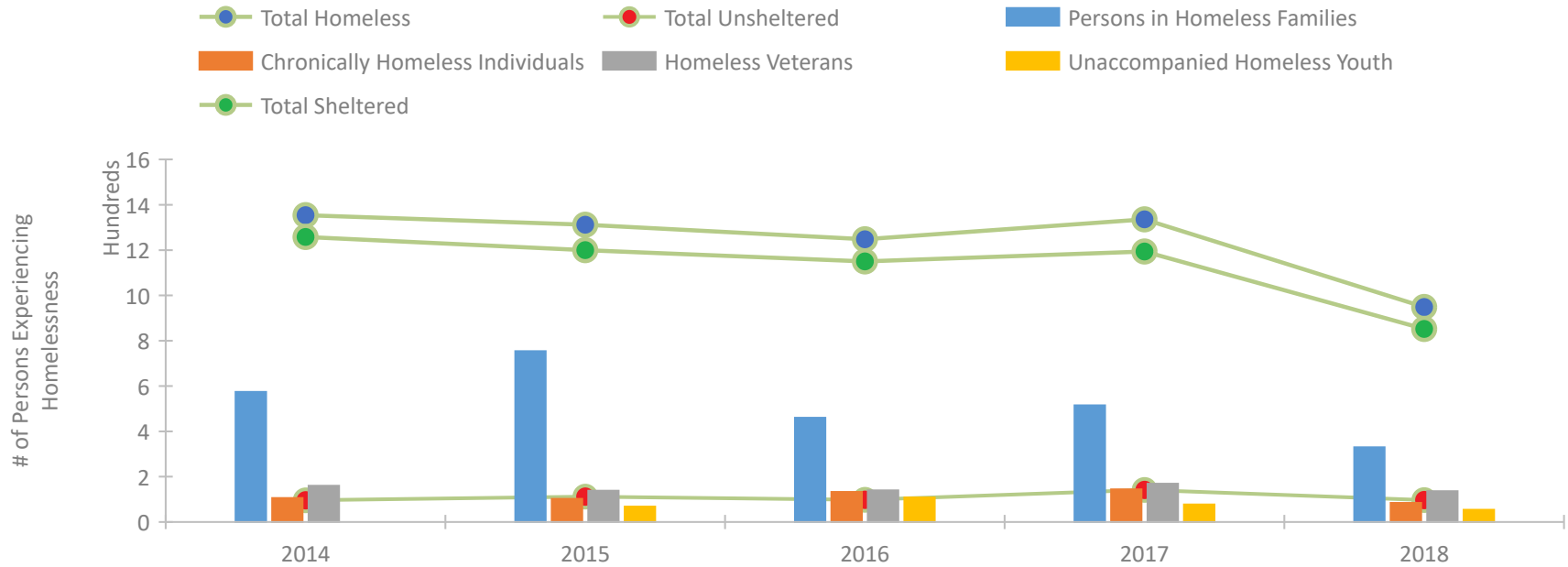


2018 CoC Boundary 2017 CoC Boundary

### Housing Inventory Count by Program Type

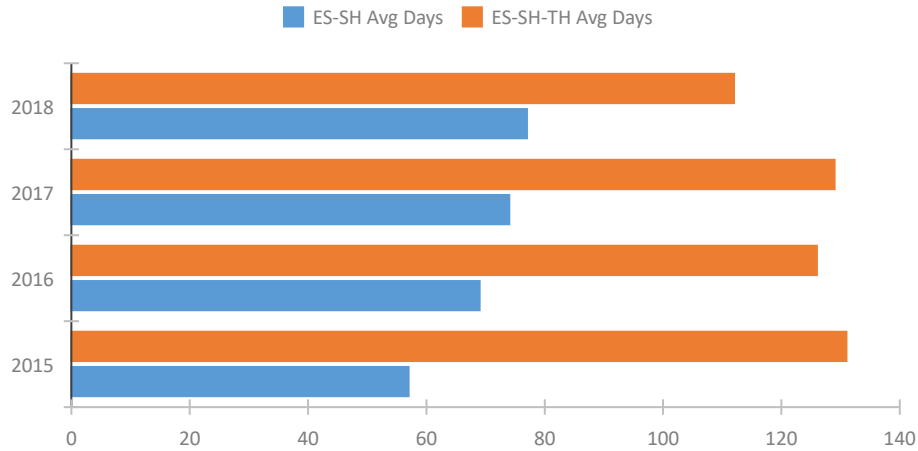


### Homeless Population – Point-in-Time (PIT) Count

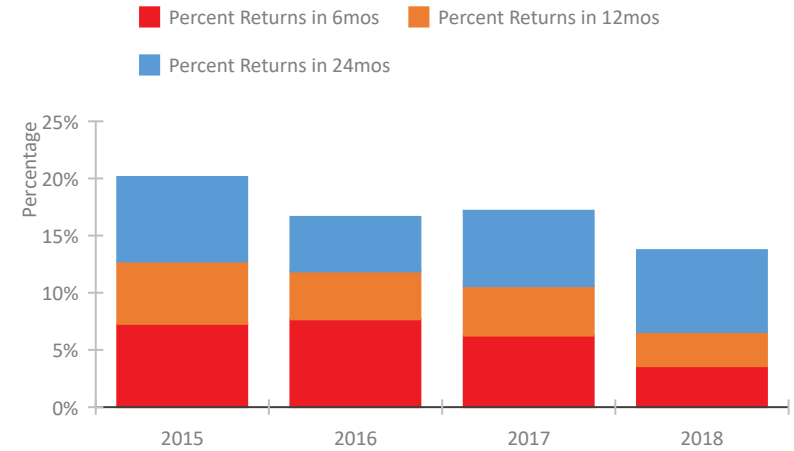


## CoC Performance Profile MO-501 St. Louis City CoC

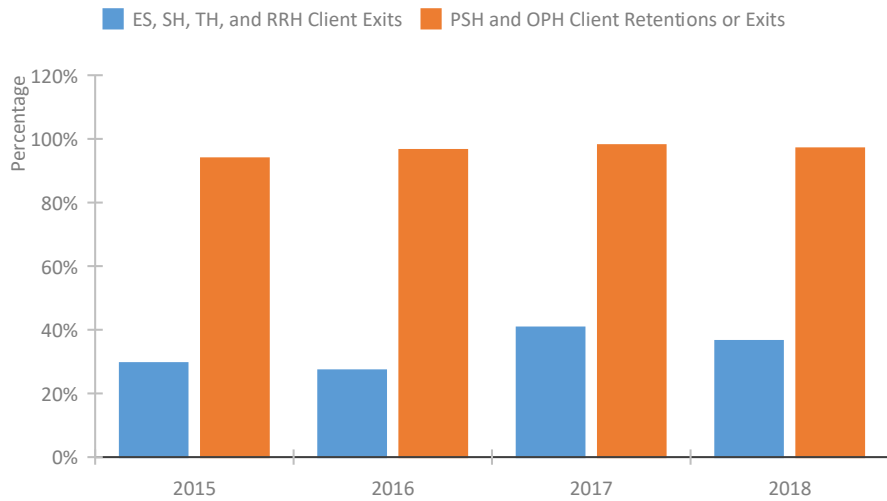
### Length of Time Homeless



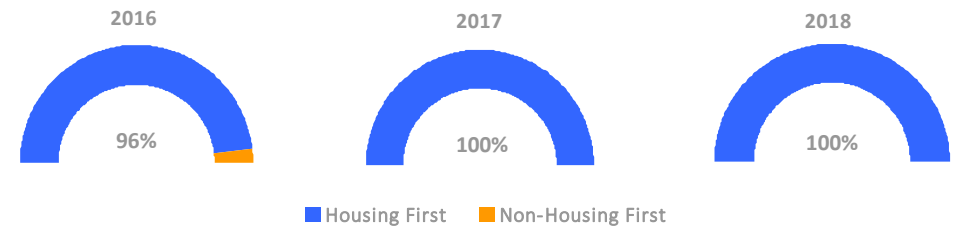
### Returns to Homelessness Over Time



### Exits to Permanent Housing by Program Type



### Proportion of Housing First Projects by Year



### Number of Projects by Year

	2016	2017	2018
Housing First Projects	25	27	29
Non-Housing First Projects	1	0	0

## Data Summary: MO-501 St. Louis City CoC

### Point-In-Time Count Summary

	2014	2015	2016	2017	2018	2017-18 Change	% Change
Number of Sheltered Persons in Families	565	739	460	515	330	-185	-36%
Number of Unsheltered Persons in Families	9	15	0	0	0	0	--
Number of Sheltered Individuals	693	461	690	679	522	-157	-23%
Number of Unsheltered Individuals	87	97	98	142	97	-45	-32%
<b>Total Homeless Persons</b>	<b>1,354</b>	<b>1,312</b>	<b>1,248</b>	<b>1,336</b>	<b>949</b>	<b>-387</b>	<b>-29%</b>
Number of Sheltered Families	147	202	146	172	112	-60	-35%
Number of Unsheltered Families	4	3	0	0	0	0	--
<b>Number of Total Families</b>	<b>151</b>	<b>205</b>	<b>146</b>	<b>172</b>	<b>112</b>	<b>-60</b>	<b>-35%</b>
Sheltered Chronically Homeless Individuals	80	25	97	74	63	-11	-15%
Unsheltered Chronically Homeless Individuals	26	77	36	70	21	-49	-70%
<b>Total Chronically Homeless Individuals</b>	<b>106</b>	<b>102</b>	<b>133</b>	<b>144</b>	<b>84</b>	<b>-60</b>	<b>-42%</b>
Sheltered Veterans	140	125	137	158	132	-26	-16%
Unsheltered Veterans	20	13	3	11	4	-7	-64%
<b>Total Veterans</b>	<b>160</b>	<b>138</b>	<b>140</b>	<b>169</b>	<b>136</b>	<b>-33</b>	<b>-20%</b>
Sheltered Unaccompanied Youth (up to 24)	--	57	104	69	47	-22	-32%
Unsheltered Unaccompanied Youth (up to 24)	--	11	4	8	7	-1	-12%
<b>Total Unaccompanied Youth (up to 24)</b>	<b>--</b>	<b>68</b>	<b>108</b>	<b>77</b>	<b>54</b>	<b>-23</b>	<b>-30%</b>

### System Performance Measures Summary

	2014	2015	2016	2017	2018	2017-18 Change	% Change
Average Length of Time Homeless (days)	N/A	131	126	129	112	-17	-13.2%
Rate People Return to Homelessness in 6 Months	N/A	7.3%	7.7%	6.3%	3.6%	-2.7%	N/A
Number of People who are Homeless for the First Time	N/A	2452	2604	2399	2369	-30	-1.3%
Rate People Exit from ES, SH, TH, and RRH to PH	N/A	29.5%	27.3%	40.7%	36.5%	-4.2%	N/A
Rate People in PSH and OPH Retain or Exit to PH	N/A	93.9%	96.5%	98.0%	97.0%	-1%	N/A

### Housing Inventory Count Summary

	2014	2015	2016	2017	2018	2017-18 Change	% Change
Emergency Shelter (ES)	558	589	724	658	507	-151	-23%
Transitional Housing (TH)	783	757	705	680	404	-276	-41%
Permanent Supportive Housing (PSH)	1,619	1,349	1,396	1,764	1,885	121	7%
Rapid Re-Housing (RRH)	--	--	--	65	204	139	214%

### Award Summary

	2014	2015	2016	2017	2018	2017-18 Change	% Change
<b>Continuum of Care (CoC)</b>	\$10,456,027	\$10,819,284	\$11,327,426	\$11,811,783	\$12,494,002	\$682,219	6%
<b>Emergency Solutions Grants (ESG)</b>	\$1,392,396	\$1,487,092	\$1,473,173	\$1,451,090	\$1,461,624	\$10,534	1%