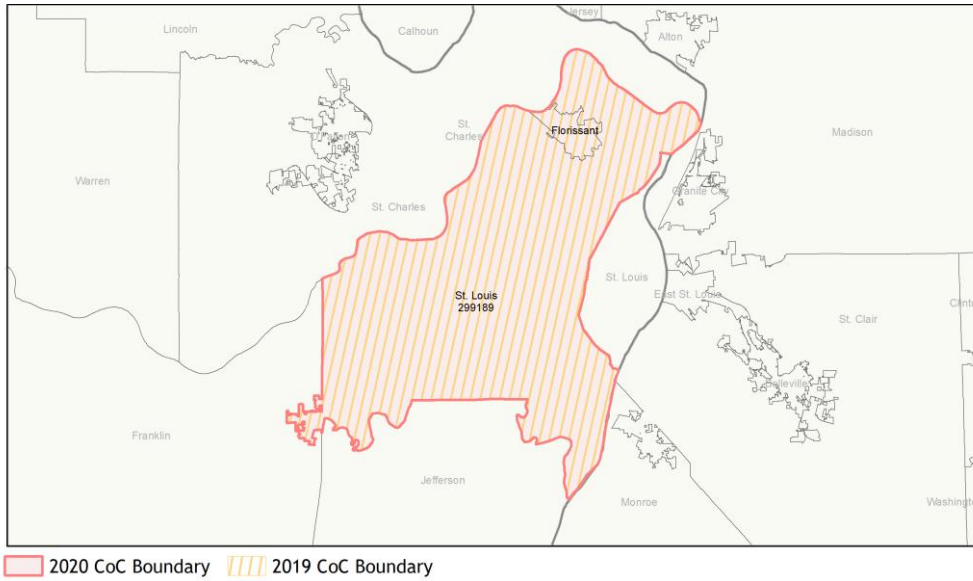
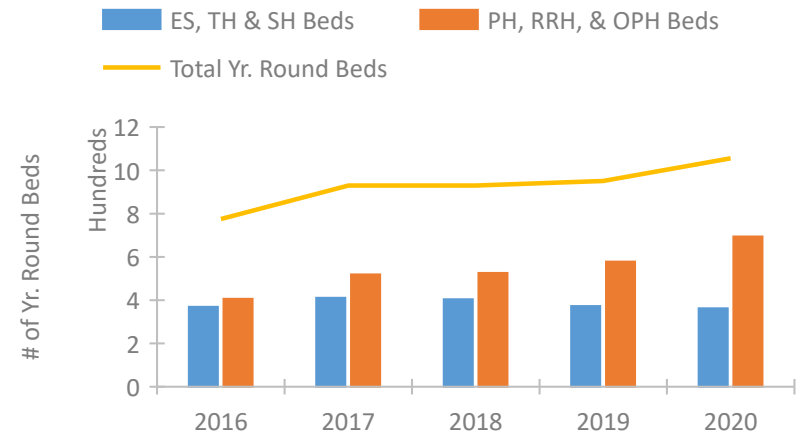


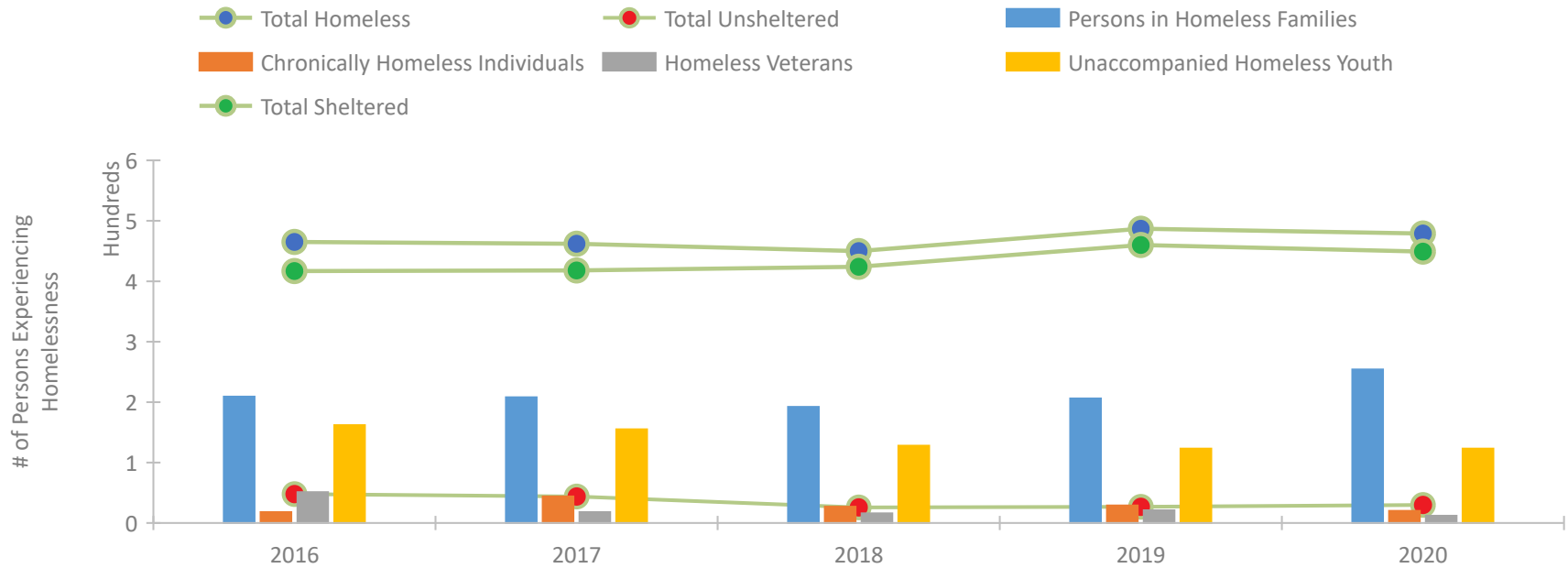
CoC Performance Profile MO-500 St. Louis County CoC



Housing Inventory Count by Program Type

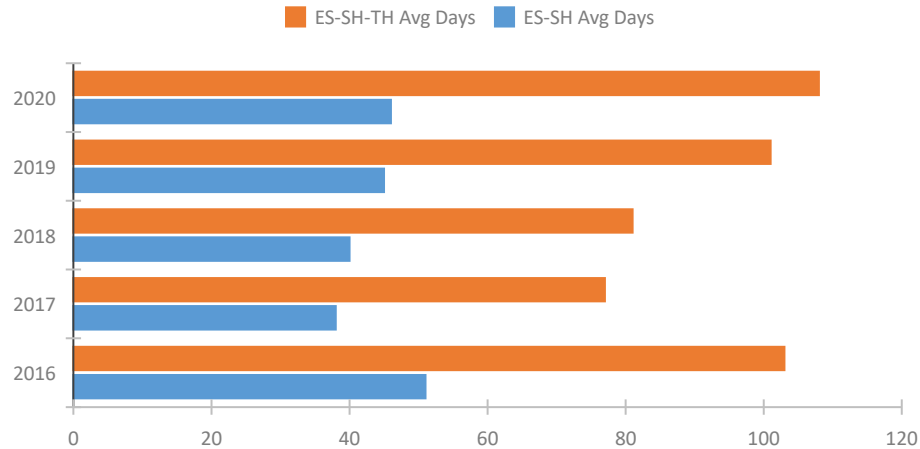


Homeless Population – Point-in-Time (PIT) Count

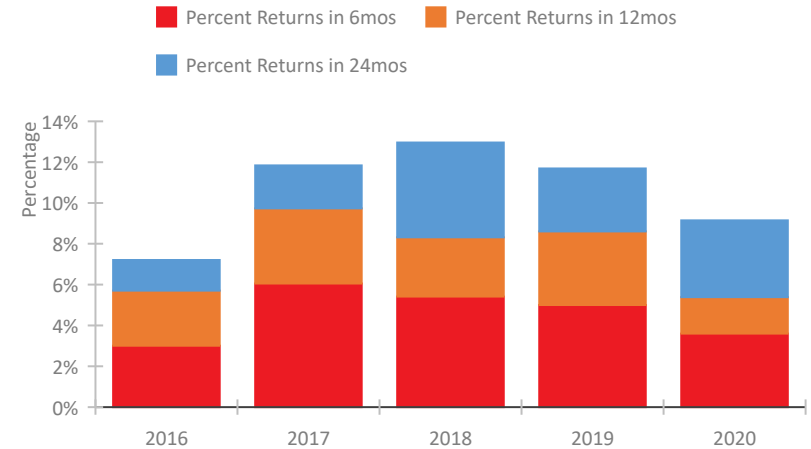


CoC Performance Profile MO-500 St. Louis County CoC

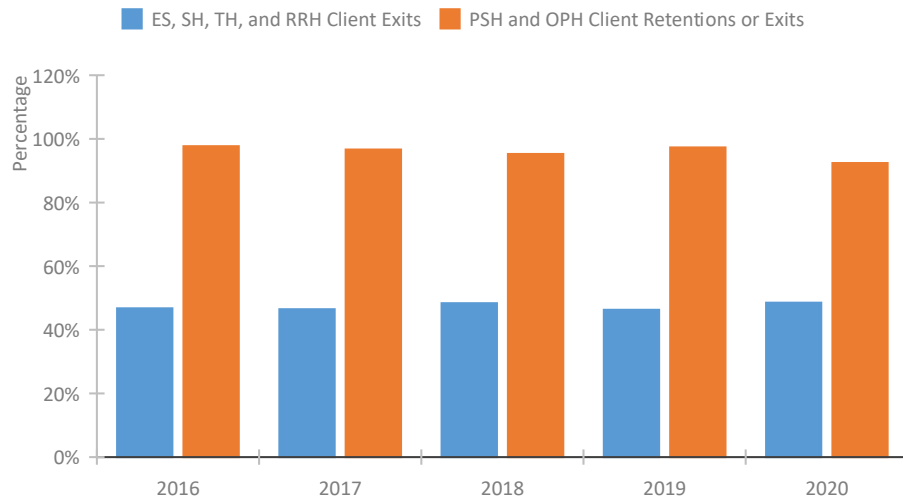
Length of Time Homeless



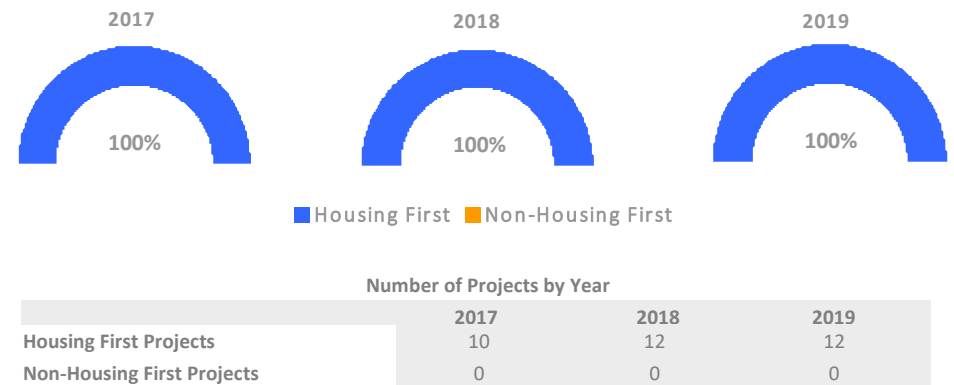
Returns to Homelessness Over Time



Exits to Permanent Housing by Program Type



Proportion of Housing First Projects by Year*



*In 2020 HUD awarded renewal projects noncompetitively, therefore no new data was collected and Housing First data remains the same from 2019 to 2020.

Data Summary: MO-500 St. Louis County CoC

Point-In-Time Count Summary

	2016	2017	2018	2019	2020	2019-20 Change	% Change
Number of Sheltered Persons in Families	205	208	192	203	254	51	25%
Number of Unsheltered Persons in Families	4	0	0	3	0	-3	-100%
Number of Sheltered Individuals	212	210	232	257	195	-62	-24%
Number of Unsheltered Individuals	44	44	26	24	30	6	25%
Total Homeless Persons	465	462	450	487	479	-8	-2%
Number of Sheltered Families	76	72	72	74	84	10	14%
Number of Unsheltered Families	1	0	0	1	0	-1	-100%
Number of Total Families	77	72	72	75	84	9	12%
Sheltered Chronically Homeless Individuals	8	27	20	23	7	-16	-70%
Unsheltered Chronically Homeless Individuals	10	17	7	6	13	7	117%
Total Chronically Homeless Individuals	18	44	27	29	20	-9	-31%
Sheltered Veterans	49	15	14	19	9	-10	-53%
Unsheltered Veterans	2	3	2	2	3	1	50%
Total Veterans	51	18	16	21	12	-9	-43%
Sheltered Unaccompanied Youth (up to 24)	149	143	125	121	122	1	1%
Unsheltered Unaccompanied Youth (up to 24)	13	12	3	2	1	-1	-50%
Total Unaccompanied Youth (up to 24)	162	155	128	123	123	0	-0%

System Performance Measures Summary

	2016	2017	2018	2018	2020	2019-20 Change	% Change
Average Length of Time Homeless (days)	103	77	81	101	108	7	6.9%
Rate People Return to Homelessness in 6 Months	3.0%	6.1%	5.4%	5.0%	3.6%	-1.4%	N/A
Number of People who are Homeless for the First Time	942	1,443	1,256	1,200	793	-407	-33.9%
Rate People Exit from ES, SH, TH, and RRH to PH	46.8%	46.5%	48.4%	46.3%	48.5%	2.2%	N/A
Rate People in PSH and OPH Retain or Exit to PH	97.7%	96.6%	95.3%	97.3%	92.4%	-4.9%	N/A

Housing Inventory Count Summary

	2016	2017	2018	2019	2020	2019-20 Change	% Change
Emergency Shelter (ES)	159	201	167	161	177	16	10%
Transitional Housing (TH)	210	210	237	212	185	-27	-13%
Permanent Supportive Housing (PSH)	309	363	383	406	532	126	31%
Rapid Re-Housing (RRH)	97	156	103	127	97	-30	-24%
Other Permanent Housing (OPH)	--	--	40	45	65	20	44%

Award Summary

	2016	2017	2018	2019	2020	2019-20 Change	% Change
Continuum of Care (CoC)	\$1,947,438	\$2,043,476	\$2,053,080	\$2,089,196	\$2,262,856	\$173,660	8%
Emergency Solutions Grants (ESG)	\$449,802	\$596,998	\$449,066	\$475,671	\$493,933	\$18,262	4%