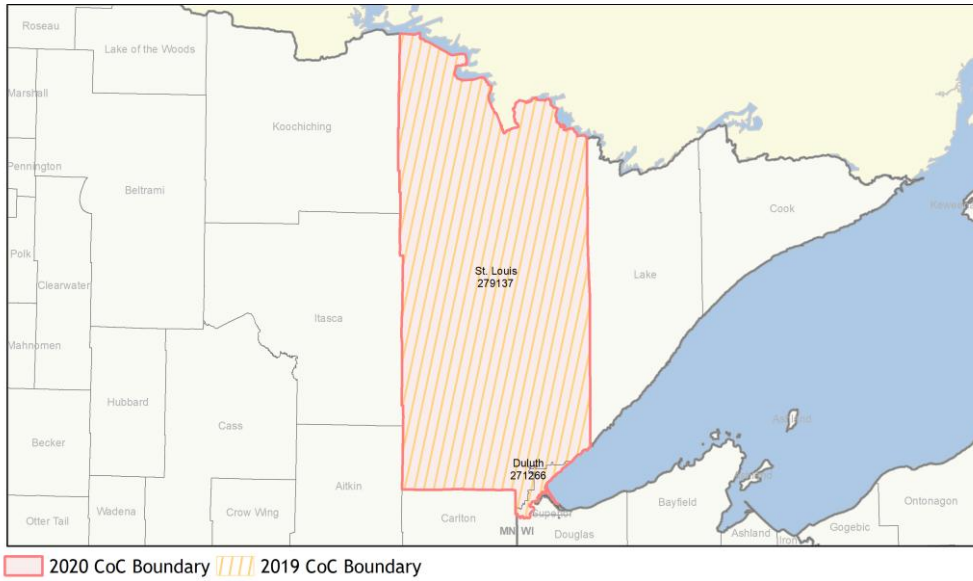
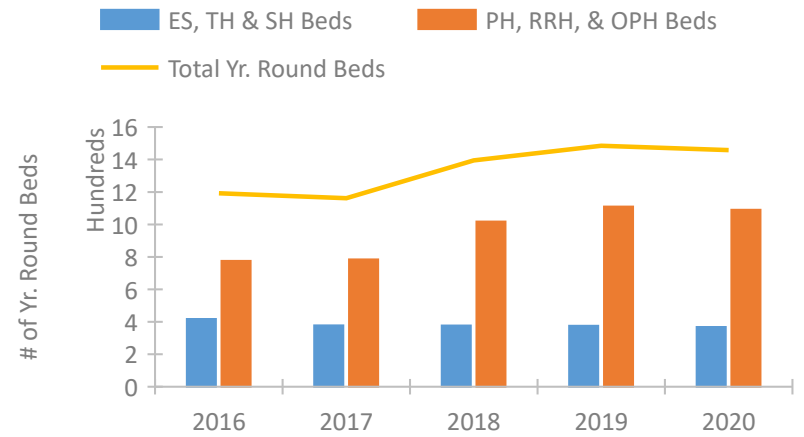


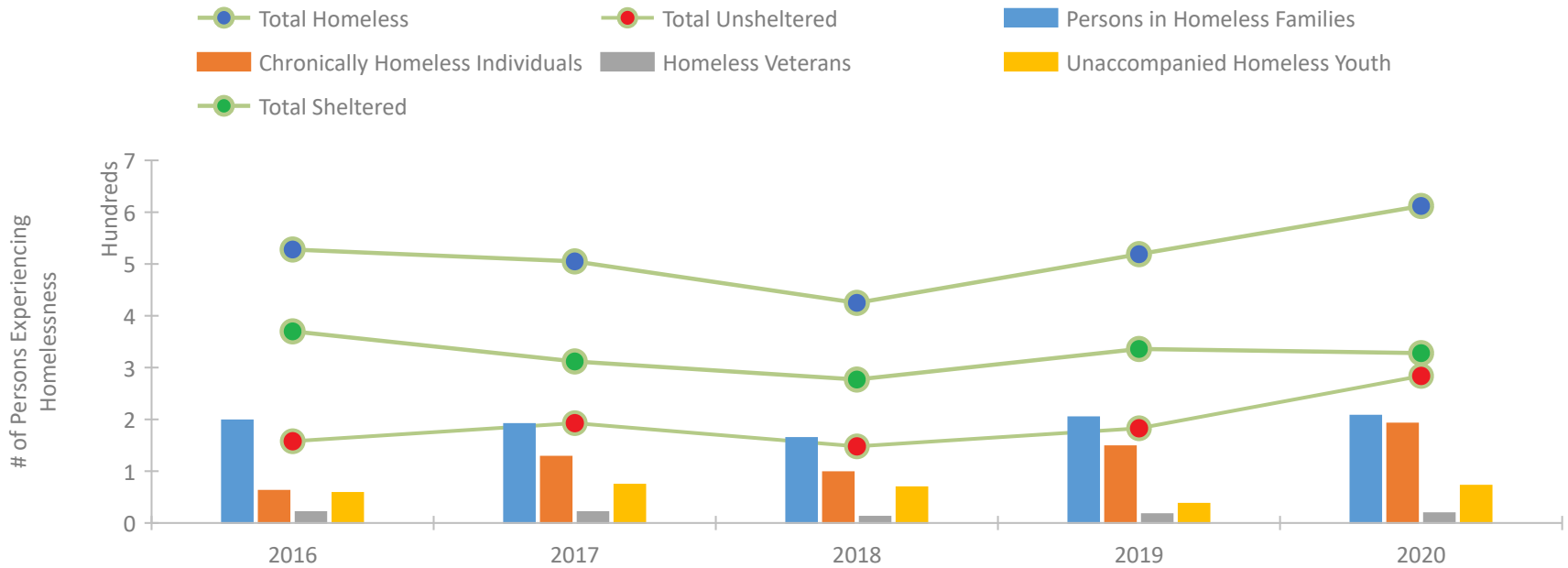
CoC Performance Profile MN-509 Duluth/St. Louis County CoC



Housing Inventory Count by Program Type

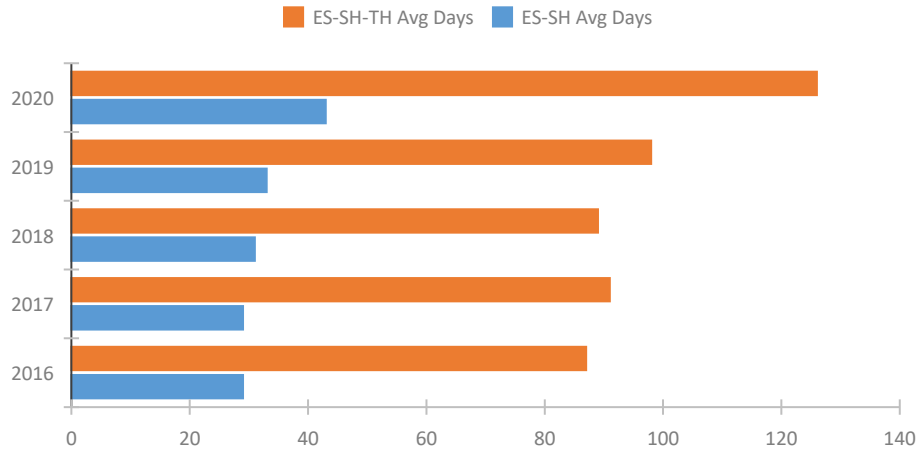


Homeless Population – Point-in-Time (PIT) Count

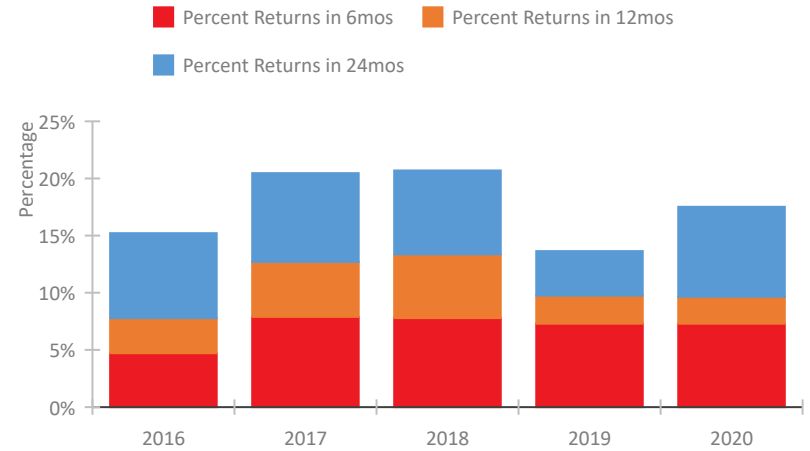


CoC Performance Profile MN-509 Duluth/St. Louis County CoC

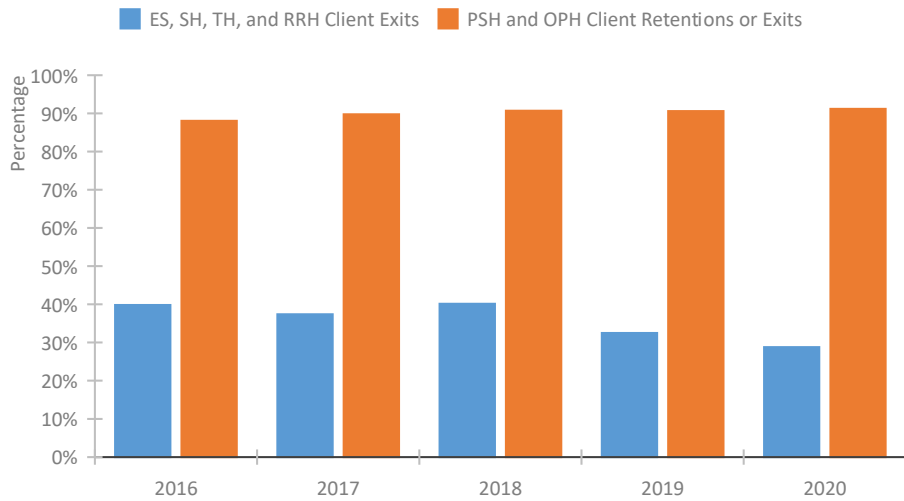
Length of Time Homeless



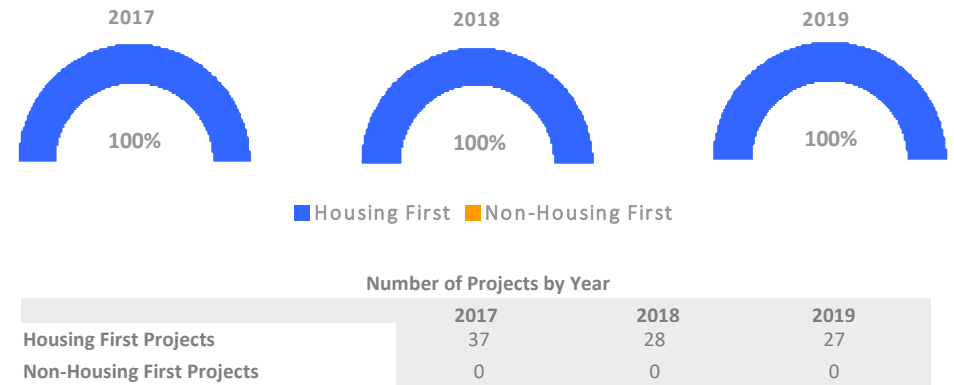
Returns to Homelessness Over Time



Exits to Permanent Housing by Program Type



Proportion of Housing First Projects by Year*



*In 2020 HUD awarded renewal projects noncompetitively, therefore no new data was collected and Housing First data remains the same from 2019 to 2020.

Data Summary: MN-509 Duluth/St. Louis County CoC

Point-In-Time Count Summary

	2016	2017	2018	2019	2020	2019-20 Change	% Change
Number of Sheltered Persons in Families	192	180	139	190	154	-36	-19%
Number of Unsheltered Persons in Families	6	11	25	14	53	39	279%
Number of Sheltered Individuals	178	132	138	146	174	28	19%
Number of Unsheltered Individuals	152	182	123	169	231	62	37%
Total Homeless Persons	528	505	425	519	612	93	18%
Number of Sheltered Families	63	61	50	62	52	-10	-16%
Number of Unsheltered Families	2	4	8	5	17	12	240%
Number of Total Families	65	65	58	67	69	2	3%
Sheltered Chronically Homeless Individuals	25	12	21	32	46	14	44%
Unsheltered Chronically Homeless Individuals	37	116	77	116	146	30	26%
Total Chronically Homeless Individuals	62	128	98	148	192	44	30%
Sheltered Veterans	13	13	9	13	15	2	15%
Unsheltered Veterans	8	8	3	4	4	0	-0%
Total Veterans	21	21	12	17	19	2	12%
Sheltered Unaccompanied Youth (up to 24)	47	42	51	23	37	14	61%
Unsheltered Unaccompanied Youth (up to 24)	11	32	18	14	35	21	150%
Total Unaccompanied Youth (up to 24)	58	74	69	37	72	35	95%

System Performance Measures Summary

	2016	2017	2018	2018	2020	2019-20 Change	% Change
Average Length of Time Homeless (days)	87	91	89	98	126	28	28.6%
Rate People Return to Homelessness in 6 Months	4.7%	7.9%	7.8%	7.3%	7.3%	-0%	N/A
Number of People who are Homeless for the First Time	1,185	1,217	1,191	1,071	1,047	-24	-2.2%
Rate People Exit from ES, SH, TH, and RRH to PH	39.8%	37.4%	40.1%	32.5%	28.8%	-3.7%	N/A
Rate People in PSH and OPH Retain or Exit to PH	88.1%	89.8%	90.7%	90.6%	91.2%	0.6%	N/A

Housing Inventory Count Summary

	2016	2017	2018	2019	2020	2019-20 Change	% Change
Emergency Shelter (ES)	188	189	204	199	199	0	-0%
Transitional Housing (TH)	229	189	173	176	169	-7	-4%
Permanent Supportive Housing (PSH)	752	735	912	516	549	33	6%
Rapid Re-Housing (RRH)	23	49	106	114	101	-13	-11%
Other Permanent Housing (OPH)	--	--	--	480	440	-40	-8%

Award Summary

	2016	2017	2018	2019	2020	2019-20 Change	% Change
Continuum of Care (CoC)	\$3,045,367	\$3,053,541	\$3,277,549	\$3,262,299	\$3,370,772	\$108,473	3%
Emergency Solutions Grants (ESG)	\$360,639	\$358,371	\$360,268	\$364,326	\$376,555	\$12,229	3%