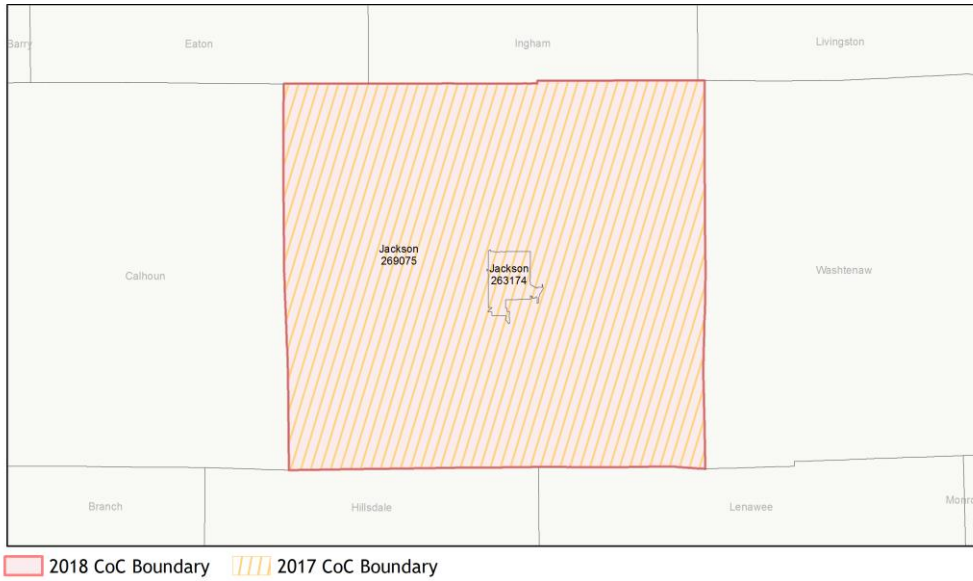
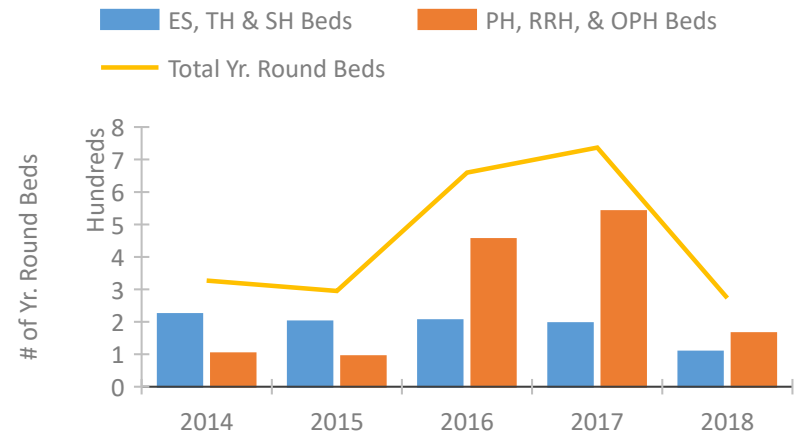


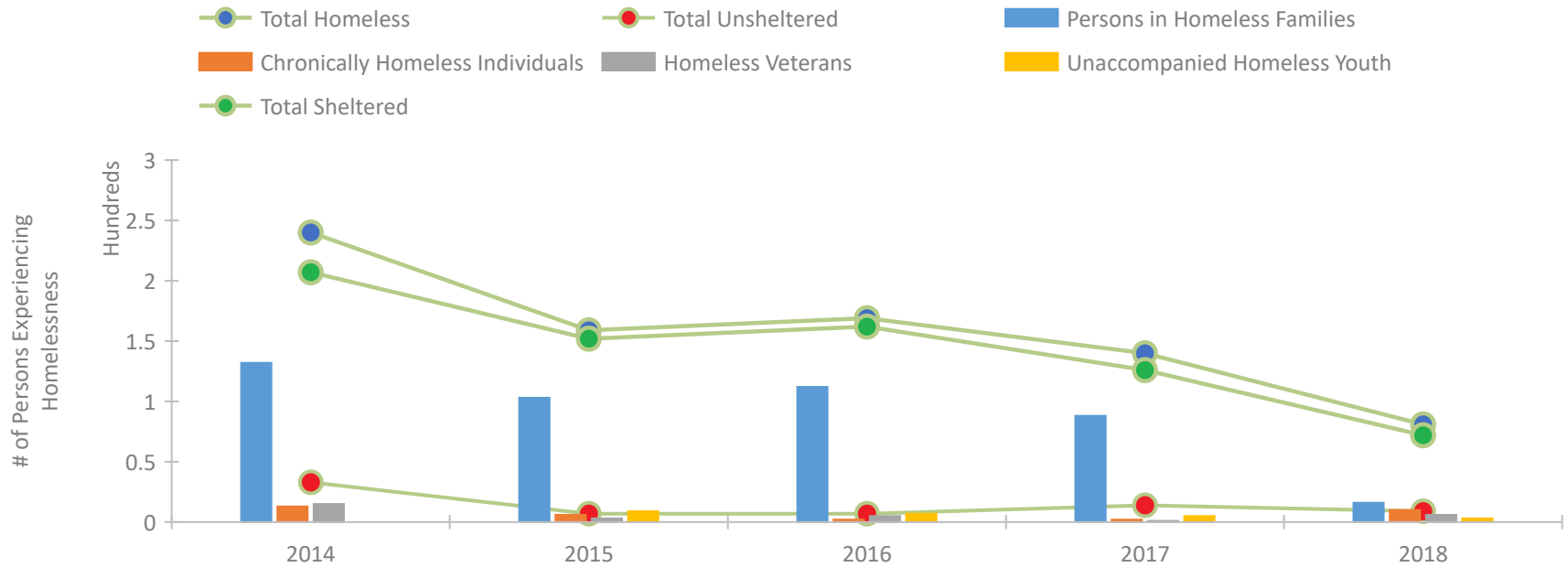
CoC Performance Profile MI-517 Jackson City & County CoC



Housing Inventory Count by Program Type

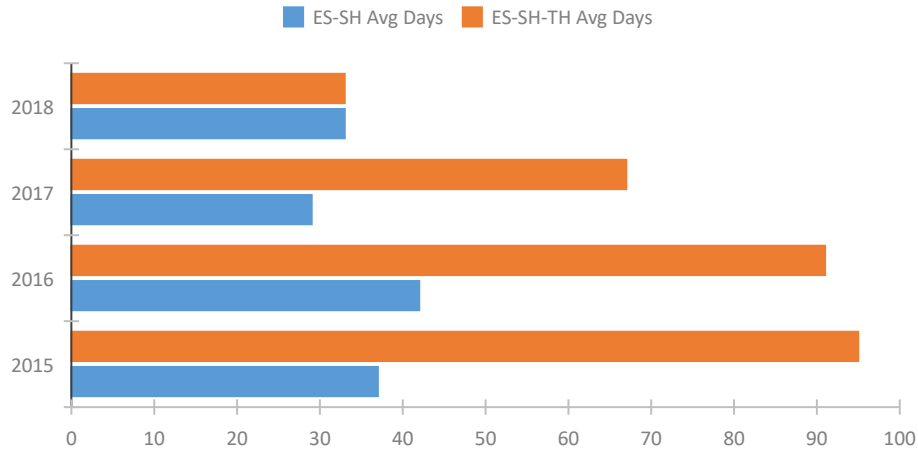


Homeless Population – Point-in-Time (PIT) Count

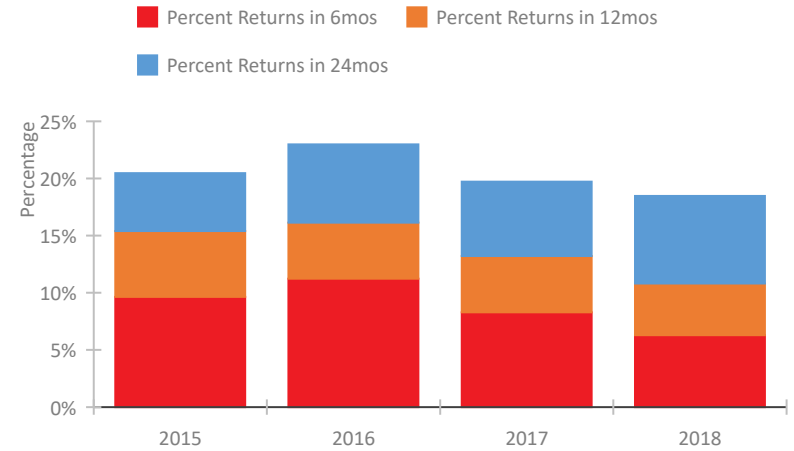


CoC Performance Profile MI-517 Jackson City & County CoC

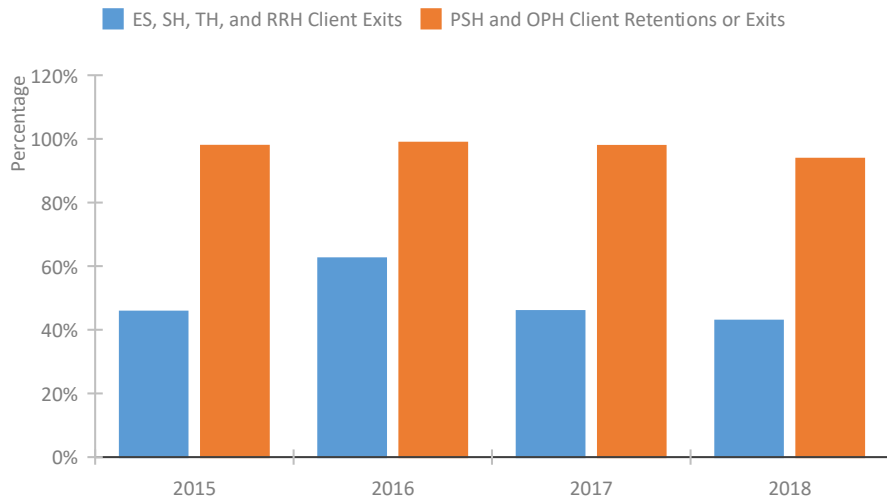
Length of Time Homeless



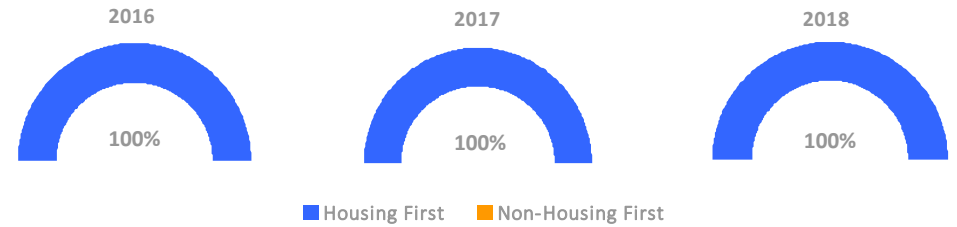
Returns to Homelessness Over Time



Exits to Permanent Housing by Program Type



Proportion of Housing First Projects by Year



Number of Projects by Year

	2016	2017	2018
Housing First Projects	8	5	4
Non-Housing First Projects	0	0	0

Data Summary: MI-517 Jackson City & County CoC

Point-In-Time Count Summary

	2014	2015	2016	2017	2018	2017-18 Change	% Change
Number of Sheltered Persons in Families	132	100	109	82	16	-66	-80%
Number of Unsheltered Persons in Families	0	3	3	6	0	-6	-100%
Number of Sheltered Individuals	75	52	53	44	56	12	27%
Number of Unsheltered Individuals	33	4	4	8	9	1	12%
Total Homeless Persons	240	159	169	140	81	-59	-42%
Number of Sheltered Families	44	33	34	25	6	-19	-76%
Number of Unsheltered Families	0	1	1	1	0	-1	-100%
Number of Total Families	44	34	35	26	6	-20	-77%
Sheltered Chronically Homeless Individuals	8	5	1	2	8	6	300%
Unsheltered Chronically Homeless Individuals	5	1	1	0	2	2	100%
Total Chronically Homeless Individuals	13	6	2	2	10	8	400%
Sheltered Veterans	4	3	5	1	5	4	400%
Unsheltered Veterans	11	0	0	0	1	1	100%
Total Veterans	15	3	5	1	6	5	500%
Sheltered Unaccompanied Youth (up to 24)	--	9	7	5	3	-2	-40%
Unsheltered Unaccompanied Youth (up to 24)	--	0	0	0	0	0	--
Total Unaccompanied Youth (up to 24)	--	9	7	5	3	-2	-40%

System Performance Measures Summary

	2014	2015	2016	2017	2018	2017-18 Change	% Change
Average Length of Time Homeless (days)	N/A	95	91	67	33	-34	-50.7%
Rate People Return to Homelessness in 6 Months	N/A	9.6%	11.2%	8.3%	6.3%	-2%	N/A
Number of People who are Homeless for the First Time	N/A	672	529	590	591	1	0.2%
Rate People Exit from ES, SH, TH, and RRH to PH	N/A	45.7%	62.5%	45.9%	42.9%	-3%	N/A
Rate People in PSH and OPH Retain or Exit to PH	N/A	97.8%	98.8%	97.8%	93.8%	-4%	N/A

Housing Inventory Count Summary

	2014	2015	2016	2017	2018	2017-18 Change	% Change
Emergency Shelter (ES)	108	108	108	108	108	0	0%
Permanent Supportive Housing (PSH)	57	64	75	108	99	-9	-8%
Rapid Re-Housing (RRH)	46	30	5	53	66	13	25%

Award Summary

	2014	2015	2016	2017	2018	2017-18 Change	% Change
Continuum of Care (CoC)	\$848,800	\$905,738	\$818,093	\$849,666	\$824,043	(\$25,623)	-3%
ESG (MI state recipient - no direct funding)	\$4,214,303	\$4,574,243	\$4,697,475	\$4,987,798	\$4,677,190	(\$310,608)	-6%