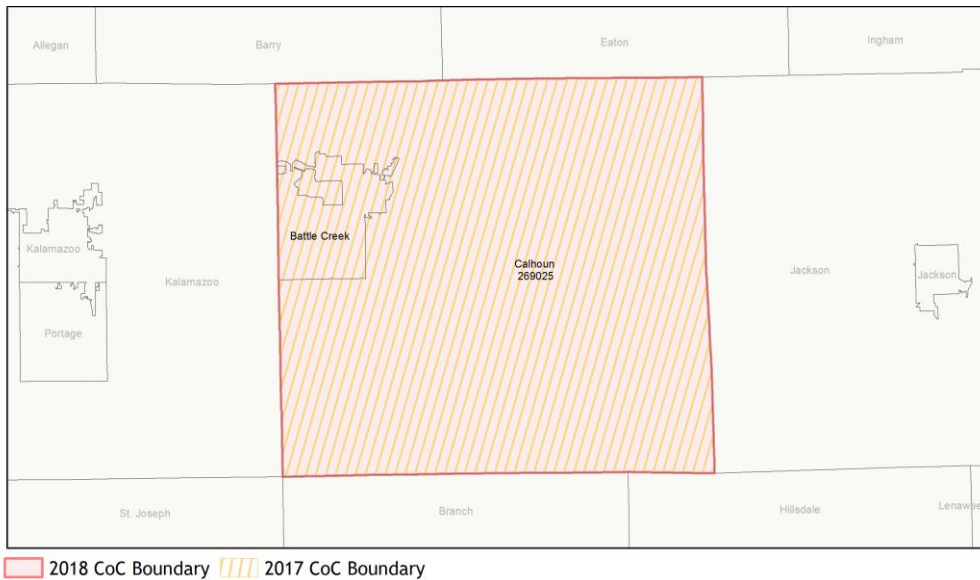
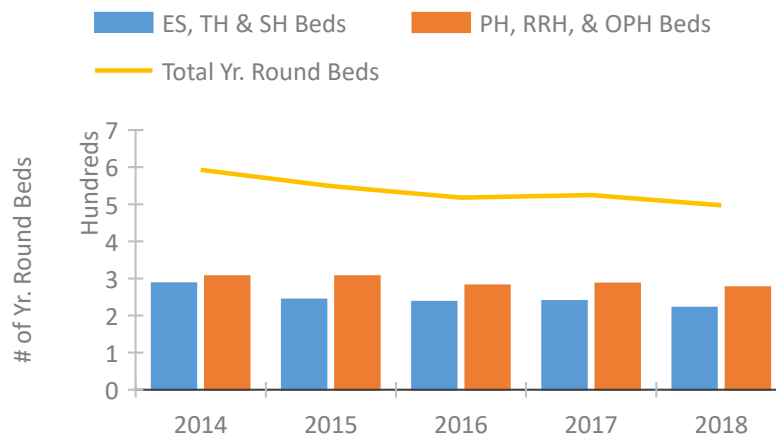


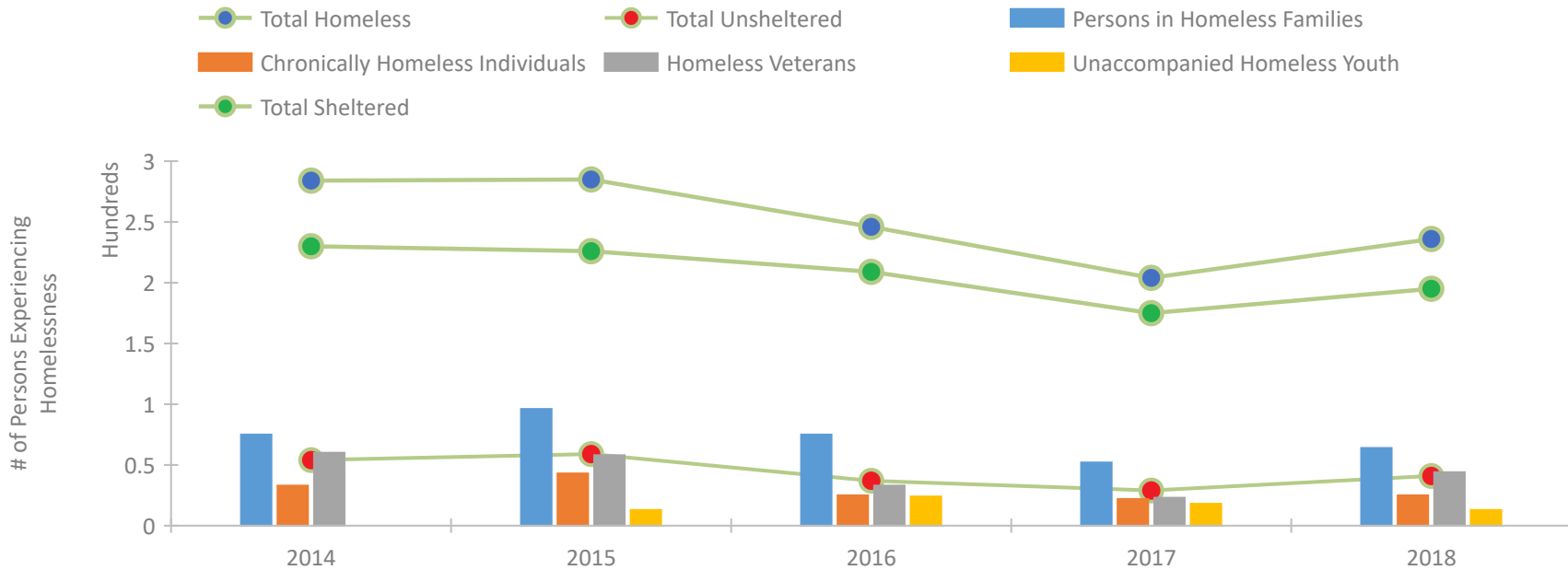
CoC Performance Profile MI-514 Battle Creek/Calhoun County CoC



Housing Inventory Count by Program Type

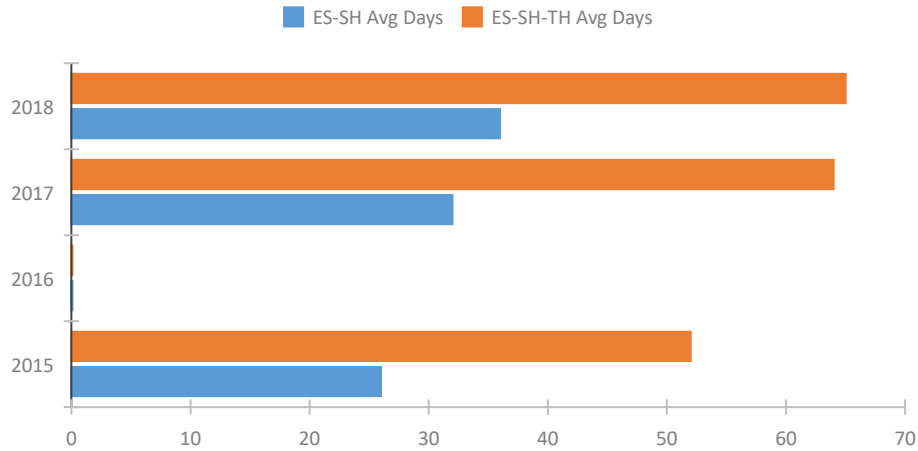


Homeless Population – Point-in-Time (PIT) Count

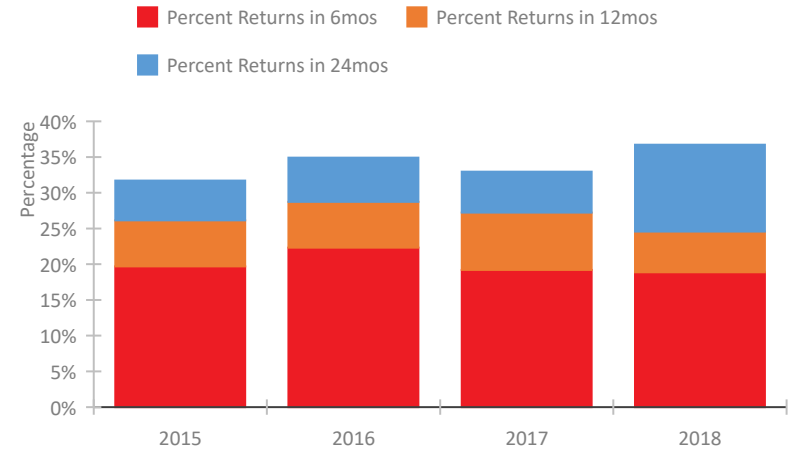


CoC Performance Profile MI-514 Battle Creek/Calhoun County CoC

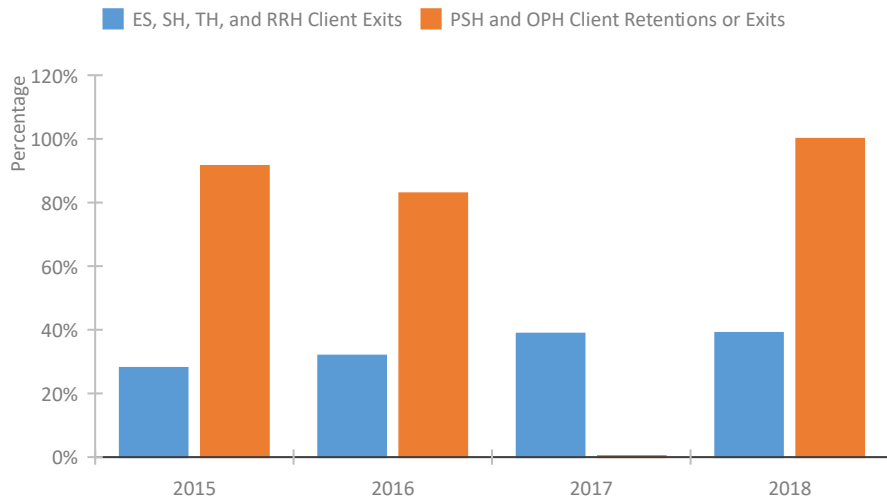
Length of Time Homeless



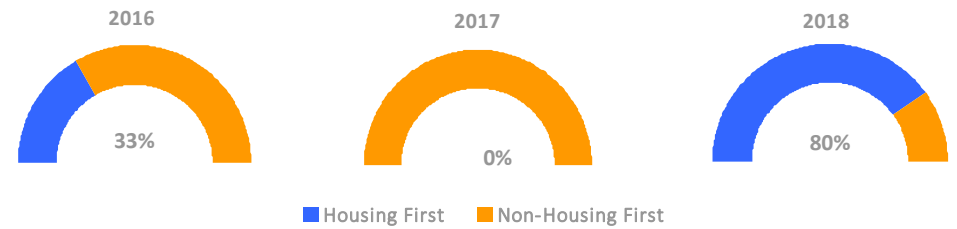
Returns to Homelessness Over Time



Exits to Permanent Housing by Program Type



Proportion of Housing First Projects by Year



Number of Projects by Year

	2016	2017	2018
Housing First Projects	1	0	4
Non-Housing First Projects	2	6	1

Data Summary: MI-514 Battle Creek/Calhoun County CoC

Point-In-Time Count Summary

	2014	2015	2016	2017	2018	2017-18 Change	% Change
Number of Sheltered Persons in Families	75	84	75	47	64	17	36%
Number of Unsheltered Persons in Families	0	12	0	5	0	-5	-100%
Number of Sheltered Individuals	155	142	134	128	131	3	2%
Number of Unsheltered Individuals	54	47	37	24	41	17	71%
Total Homeless Persons	284	285	246	204	236	32	16%
Number of Sheltered Families	23	23	25	15	19	4	27%
Number of Unsheltered Families	0	3	0	1	0	-1	-100%
Number of Total Families	23	26	25	16	19	3	19%
Sheltered Chronically Homeless Individuals	16	26	17	13	16	3	23%
Unsheltered Chronically Homeless Individuals	17	17	8	9	9	0	0%
Total Chronically Homeless Individuals	33	43	25	22	25	3	14%
Sheltered Veterans	40	44	29	22	41	19	86%
Unsheltered Veterans	20	14	4	1	3	2	200%
Total Veterans	60	58	33	23	44	21	91%
Sheltered Unaccompanied Youth (up to 24)	--	12	14	16	5	-11	-69%
Unsheltered Unaccompanied Youth (up to 24)	--	1	10	2	8	6	300%
Total Unaccompanied Youth (up to 24)	--	13	24	18	13	-5	-28%

System Performance Measures Summary

	2014	2015	2016	2017	2018	2017-18 Change	% Change
Average Length of Time Homeless (days)	N/A	52	0	64	65	1	1.6%
Rate People Return to Homelessness in 6 Months	N/A	19.7%	22.3%	19.2%	18.9%	-0.3%	N/A
Number of People who are Homeless for the First Time	N/A	756	755	692	688	-4	-0.6%
Rate People Exit from ES, SH, TH, and RRH to PH	N/A	28.0%	31.9%	38.8%	39.0%	0.2%	N/A
Rate People in PSH and OPH Retain or Exit to PH	N/A	91.5%	82.9%	--	100.0%	--	N/A

Housing Inventory Count Summary

	2014	2015	2016	2017	2018	2017-18 Change	% Change
Emergency Shelter (ES)	123	147	148	150	166	16	11%
Safe Haven (SH)	13	13	13	13	6	-7	-54%
Transitional Housing (TH)	151	83	76	76	49	-27	-36%
Permanent Supportive Housing (PSH)	306	306	149	149	149	0	0%
Rapid Re-Housing (RRH)	--	--	5	10	25	15	150%
Other Permanent Housing (OPH)	--	--	127	127	102	-25	-20%

Award Summary

	2014	2015	2016	2017	2018	2017-18 Change	% Change
Continuum of Care (CoC)	\$364,610	\$326,673	\$305,356	\$311,584	\$304,409	(\$7,175)	-2%
ESG (MI state recipient - no direct funding)	\$4,214,303	\$4,574,243	\$4,697,475	\$4,987,798	\$4,677,190	(\$310,608)	-6%