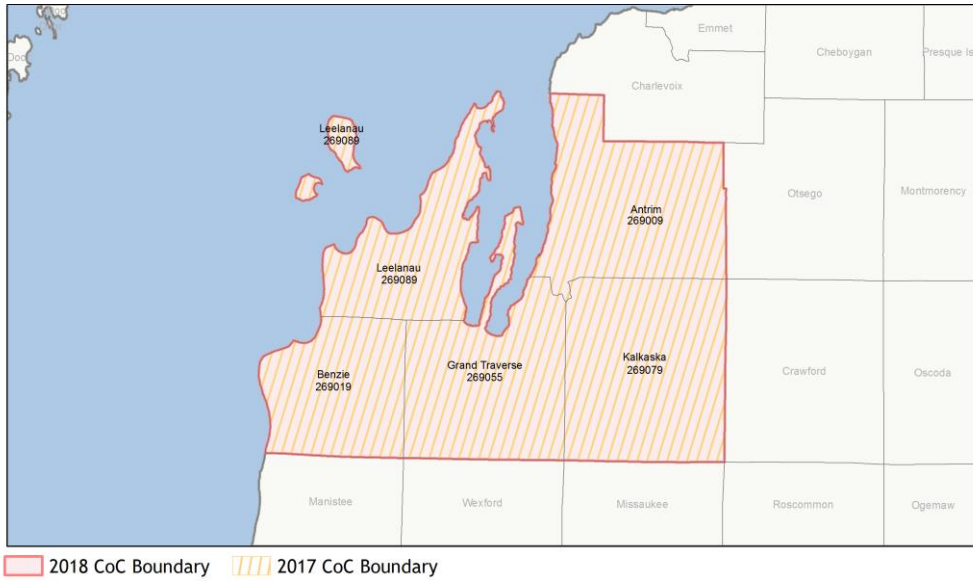
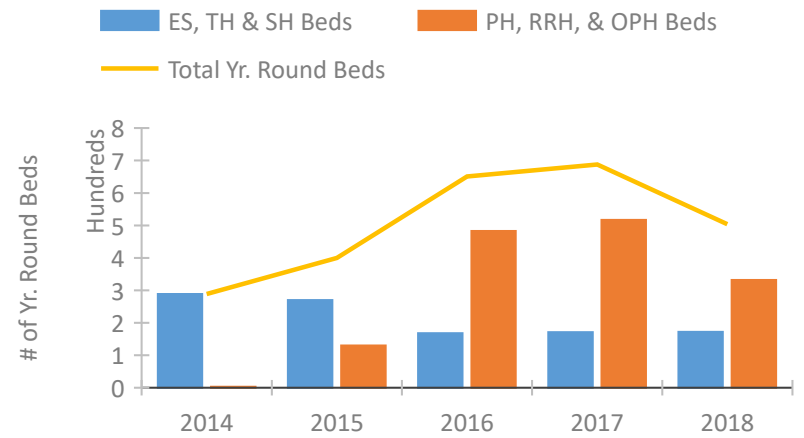


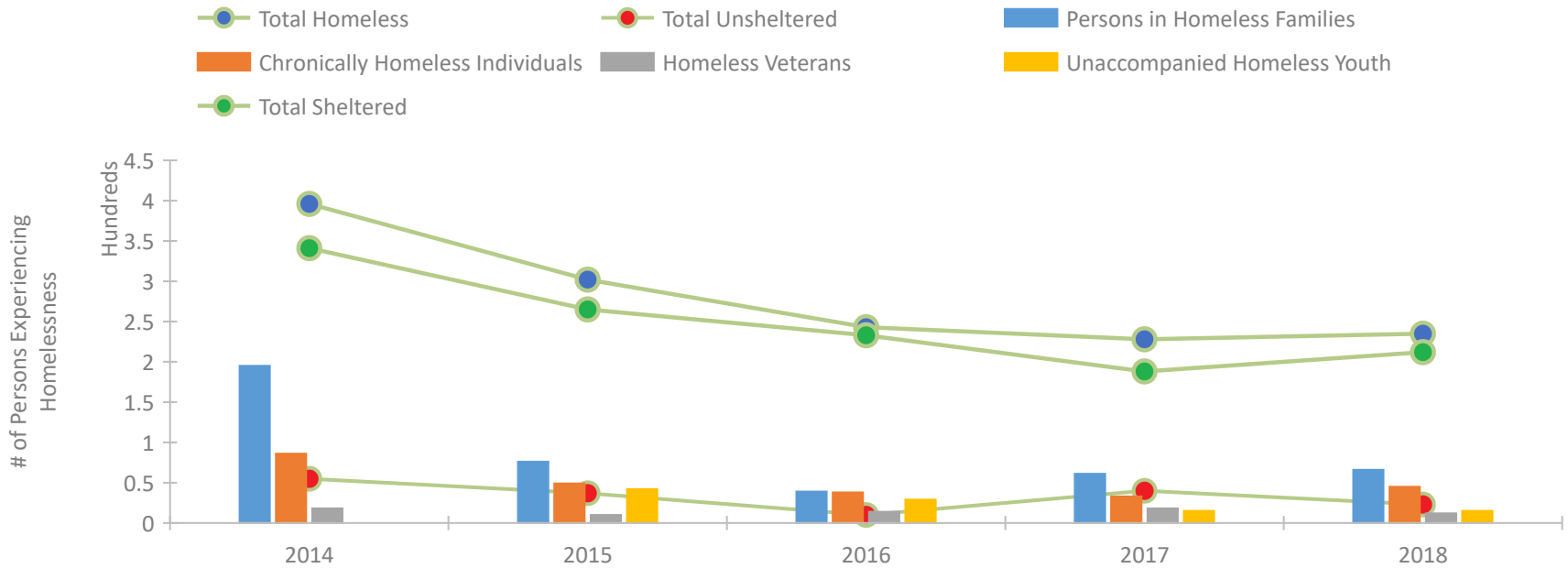
CoC Performance Profile MI-512 Grand Traverse, Antrim, Leelanau Counties CoC



Housing Inventory Count by Program Type

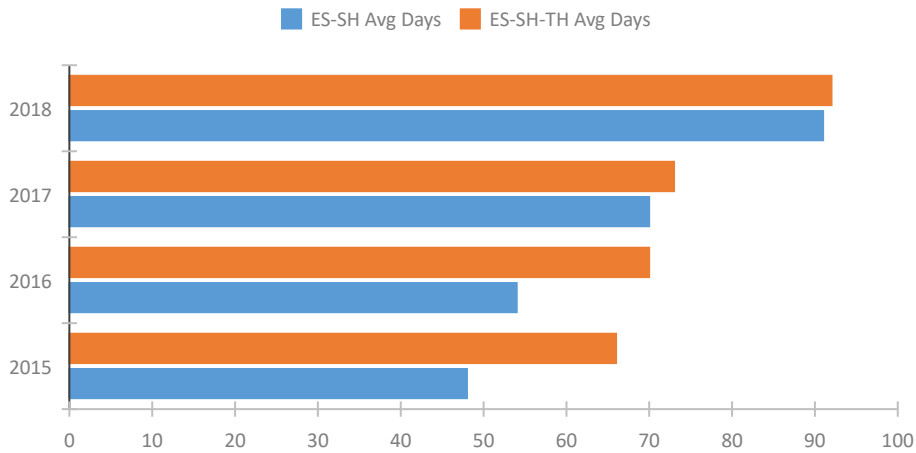


Homeless Population – Point-in-Time (PIT) Count

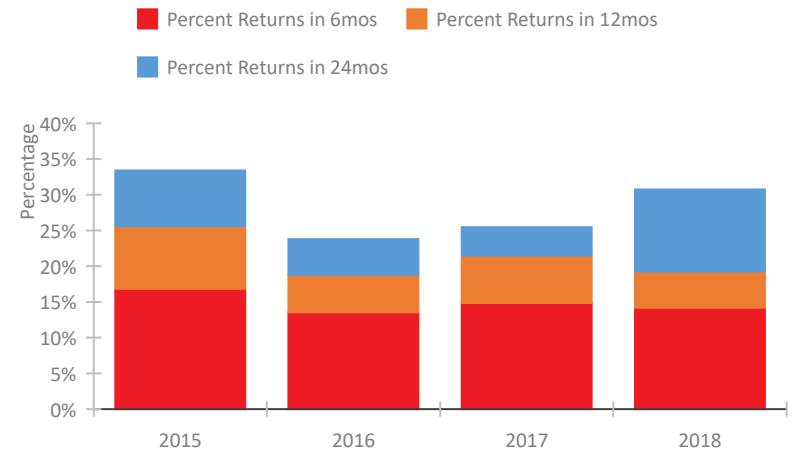


CoC Performance Profile MI-512 Grand Traverse, Antrim, Leelanau Counties CoC

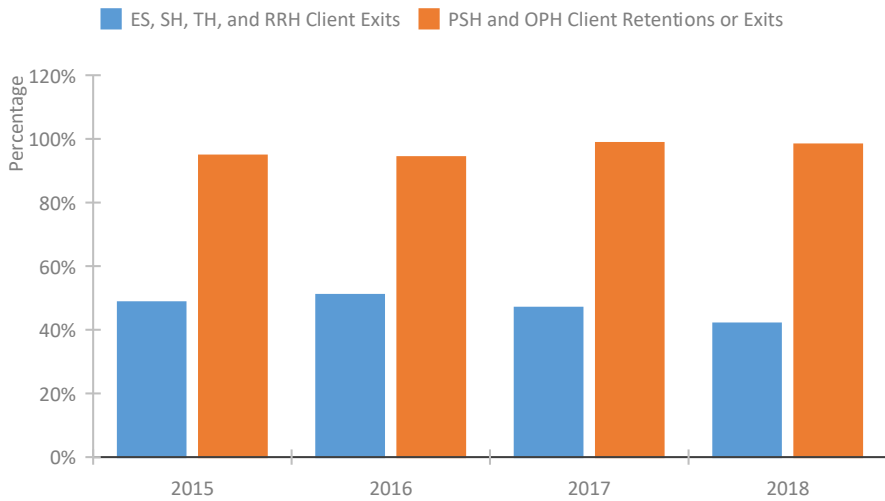
Length of Time Homeless



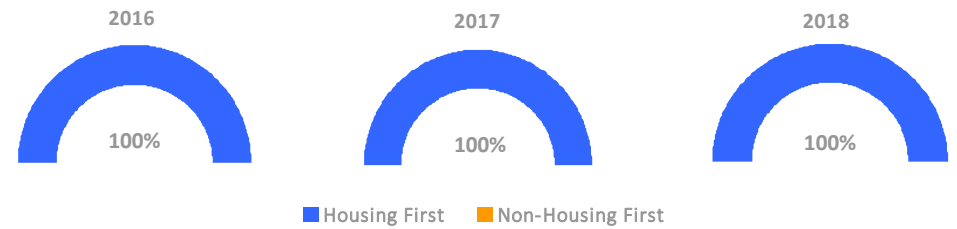
Returns to Homelessness Over Time



Exits to Permanent Housing by Program Type



Proportion of Housing First Projects by Year



Number of Projects by Year

	2016	2017	2018
Housing First Projects	10	9	12
Non-Housing First Projects	0	0	0

Data Summary: MI-512 Grand Traverse, Antrim, Leelanau Counties CoC

Point-In-Time Count Summary

	2014	2015	2016	2017	2018	2017-18 Change	% Change
Number of Sheltered Persons in Families	195	76	39	57	66	9	16%
Number of Unsheltered Persons in Families	0	0	0	4	0	-4	-100%
Number of Sheltered Individuals	146	189	194	131	146	15	11%
Number of Unsheltered Individuals	55	37	10	36	23	-13	-36%
Total Homeless Persons	396	302	243	228	235	7	3%
Number of Sheltered Families	43	30	12	18	18	0	0%
Number of Unsheltered Families	0	0	0	1	0	-1	-100%
Number of Total Families	43	30	12	19	18	-1	-5%
Sheltered Chronically Homeless Individuals	63	26	36	21	33	12	57%
Unsheltered Chronically Homeless Individuals	23	23	2	12	12	0	0%
Total Chronically Homeless Individuals	86	49	38	33	45	12	36%
Sheltered Veterans	16	9	14	15	11	-4	-27%
Unsheltered Veterans	2	1	0	3	1	-2	-67%
Total Veterans	18	10	14	18	12	-6	-33%
Sheltered Unaccompanied Youth (up to 24)	--	40	29	13	14	1	8%
Unsheltered Unaccompanied Youth (up to 24)	--	2	0	2	1	-1	-50%
Total Unaccompanied Youth (up to 24)	--	42	29	15	15	0	0%

System Performance Measures Summary

	2014	2015	2016	2017	2018	2017-18 Change	% Change
Average Length of Time Homeless (days)	N/A	66	70	73	92	19	26%
Rate People Return to Homelessness in 6 Months	N/A	16.8%	13.5%	14.9%	14.2%	-0.7%	N/A
Number of People who are Homeless for the First Time	N/A	517	457	502	395	-107	-21.3%
Rate People Exit from ES, SH, TH, and RRH to PH	N/A	48.7%	50.9%	46.9%	42.0%	-4.9%	N/A
Rate People in PSH and OPH Retain or Exit to PH	N/A	94.8%	94.3%	98.7%	98.2%	-0.5%	N/A

Housing Inventory Count Summary

	2014	2015	2016	2017	2018	2017-18 Change	% Change
Emergency Shelter (ES)	128	217	124	147	151	4	3%
Transitional Housing (TH)	161	53	44	24	21	-3	-12%
Permanent Supportive Housing (PSH)	--	67	243	309	319	10	3%
Rapid Re-Housing (RRH)	--	63	10	19	13	-6	-32%

Award Summary

	2014	2015	2016	2017	2018	2017-18 Change	% Change
Continuum of Care (CoC)	\$658,417	\$670,841	\$675,516	\$692,000	\$707,619	\$15,619	2%
ESG (MI state recipient - no direct funding)	\$4,214,303	\$4,574,243	\$4,697,475	\$4,987,798	\$4,677,190	(\$310,608)	-6%
Youth Homelessness Demonstration Program (YHDP)	N/A	N/A	\$1,306,943	--	--	--	--