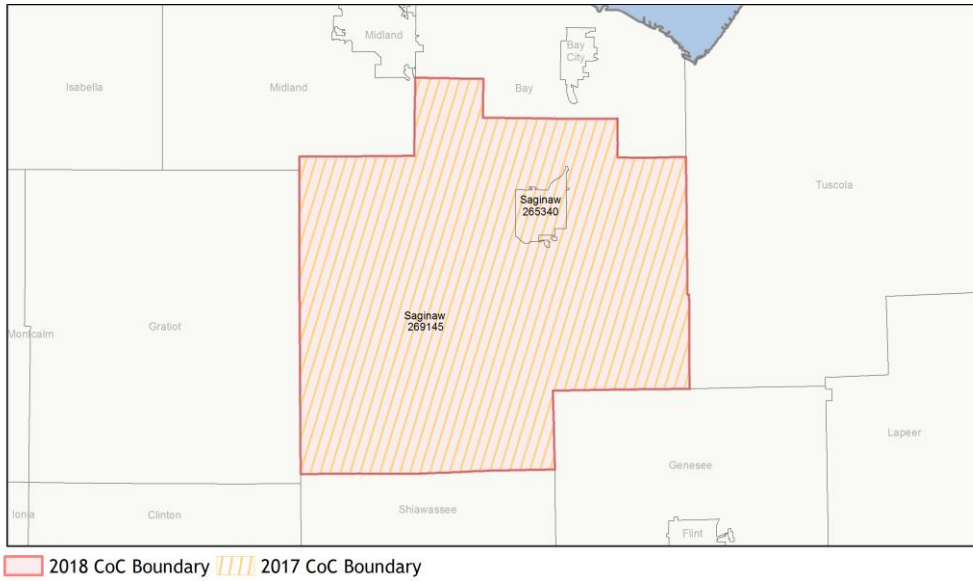
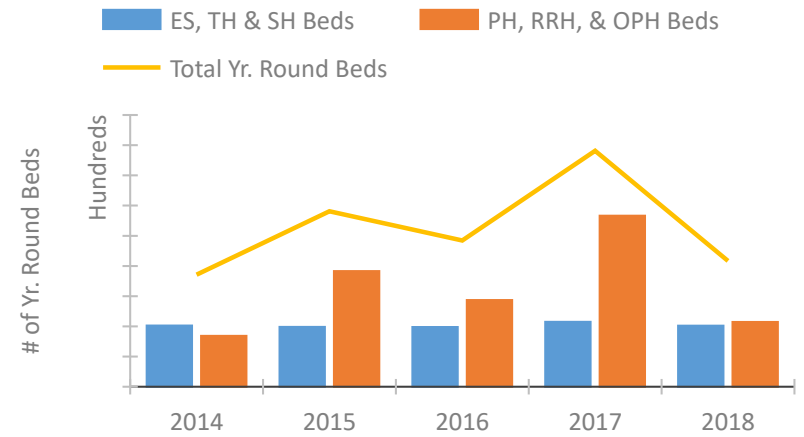


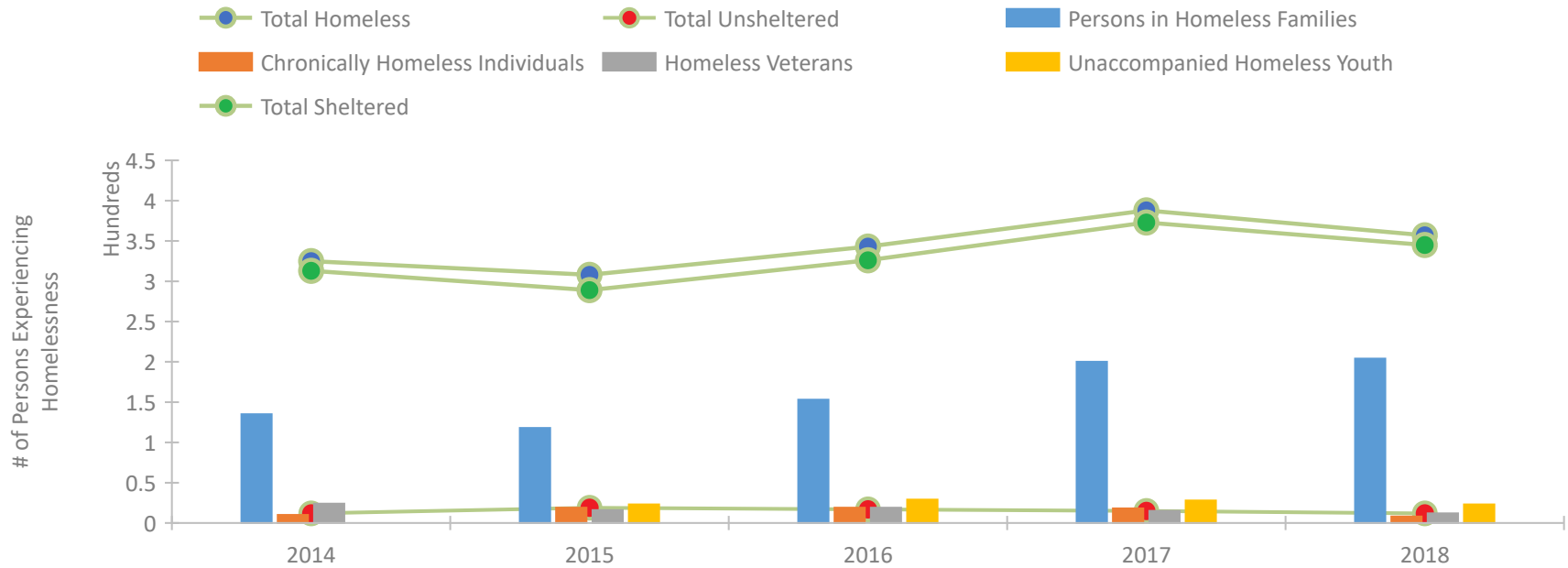
CoC Performance Profile MI-510 Saginaw City & County CoC



Housing Inventory Count by Program Type

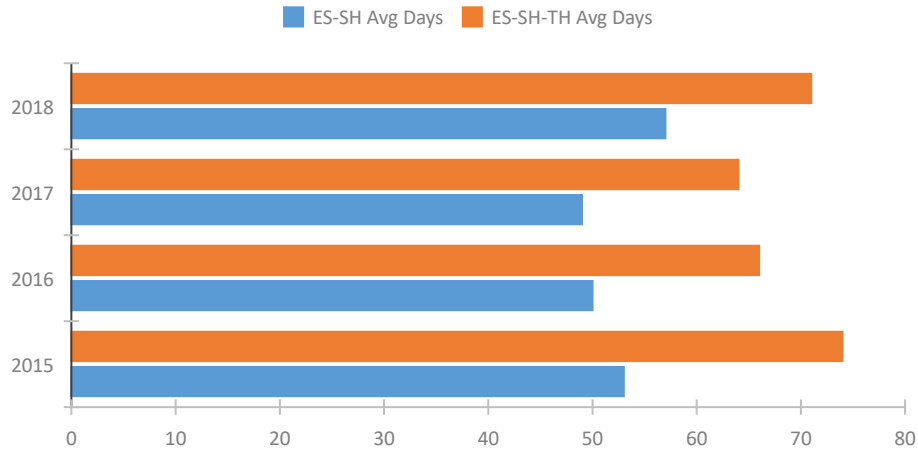


Homeless Population – Point-in-Time (PIT) Count

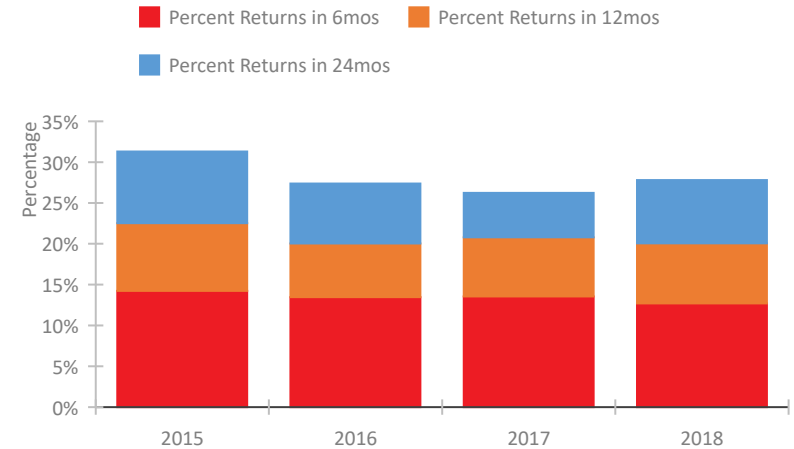


CoC Performance Profile MI-510 Saginaw City & County CoC

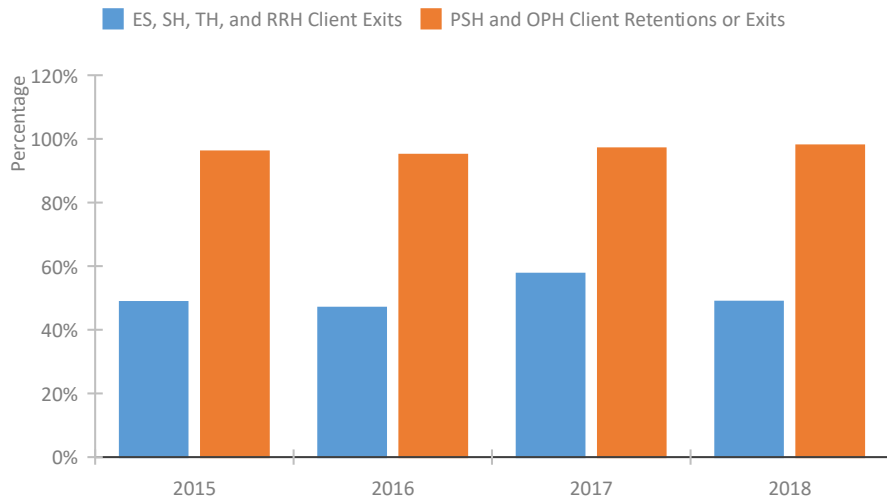
Length of Time Homeless



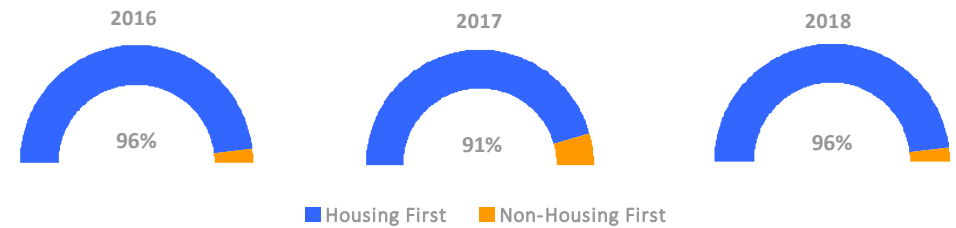
Returns to Homelessness Over Time



Exits to Permanent Housing by Program Type



Proportion of Housing First Projects by Year



Number of Projects by Year

	2016	2017	2018
Housing First Projects	24	21	22
Non-Housing First Projects	1	2	1

Data Summary: MI-510 Saginaw City & County CoC

Point-In-Time Count Summary

	2014	2015	2016	2017	2018	2017-18 Change	% Change
Number of Sheltered Persons in Families	132	113	146	193	204	11	6%
Number of Unsheltered Persons in Families	3	5	7	7	0	-7	-100%
Number of Sheltered Individuals	181	176	180	180	141	-39	-22%
Number of Unsheltered Individuals	9	14	10	8	12	4	50%
Total Homeless Persons	325	308	343	388	357	-31	-8%
Number of Sheltered Families	45	35	39	56	61	5	9%
Number of Unsheltered Families	1	1	2	2	0	-2	-100%
Number of Total Families	46	36	41	58	61	3	5%
Sheltered Chronically Homeless Individuals	10	18	16	16	8	-8	-50%
Unsheltered Chronically Homeless Individuals	0	1	3	2	0	-2	-100%
Total Chronically Homeless Individuals	10	19	19	18	8	-10	-56%
Sheltered Veterans	24	15	18	15	11	-4	-27%
Unsheltered Veterans	0	1	1	0	1	1	100%
Total Veterans	24	16	19	15	12	-3	-20%
Sheltered Unaccompanied Youth (up to 24)	--	23	27	28	23	-5	-18%
Unsheltered Unaccompanied Youth (up to 24)	--	0	2	0	0	0	--
Total Unaccompanied Youth (up to 24)	--	23	29	28	23	-5	-18%

System Performance Measures Summary

	2014	2015	2016	2017	2018	2017-18 Change	% Change
Average Length of Time Homeless (days)	N/A	74	66	64	71	7	10.9%
Rate People Return to Homelessness in 6 Months	N/A	14.2%	13.5%	13.5%	12.7%	-0.8%	N/A
Number of People who are Homeless for the First Time	N/A	1172	1190	1202	1140	-62	-5.2%
Rate People Exit from ES, SH, TH, and RRH to PH	N/A	48.7%	46.9%	57.6%	48.8%	-8.8%	N/A
Rate People in PSH and OPH Retain or Exit to PH	N/A	96.0%	95.0%	97.0%	98.0%	0.9%	N/A

Housing Inventory Count Summary

	2014	2015	2016	2017	2018	2017-18 Change	% Change
Emergency Shelter (ES)	192	216	204	210	208	-2	-1%
Safe Haven (SH)	6	6	6	6	6	0	0%
Transitional Housing (TH)	207	174	185	214	190	-24	-11%
Permanent Supportive Housing (PSH)	286	317	332	380	388	8	2%
Rapid Re-Housing (RRH)	51	74	72	34	41	7	21%

Award Summary

	2014	2015	2016	2017	2018	2017-18 Change	% Change
Continuum of Care (CoC)	\$1,843,373	\$1,806,174	\$1,806,174	\$1,884,846	\$2,039,269	\$154,423	8%
Emergency Solutions Grants (ESG)	\$173,183	\$183,511	\$183,056	\$178,918	\$174,251	(\$4,667)	-3%