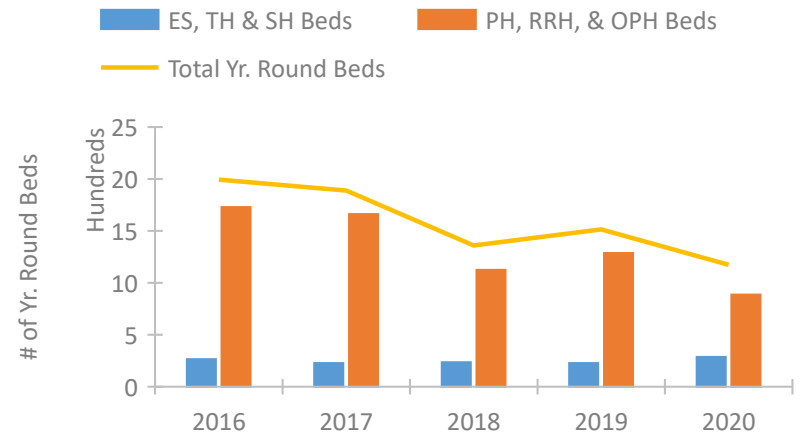


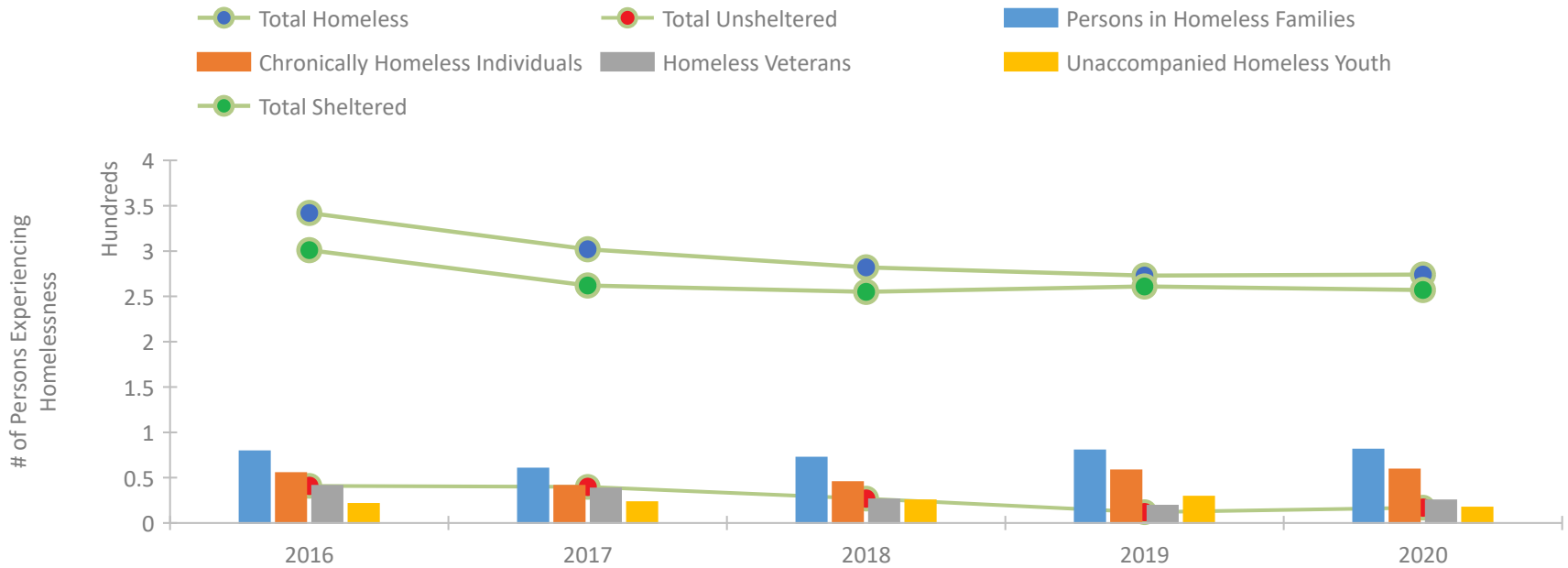
## CoC Performance Profile MI-509 Washtenaw County CoC



### Housing Inventory Count by Program Type

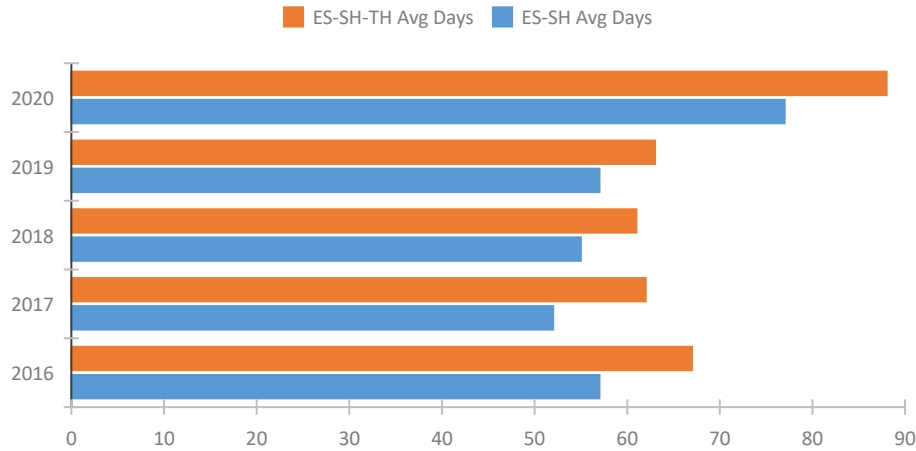


### Homeless Population – Point-in-Time (PIT) Count

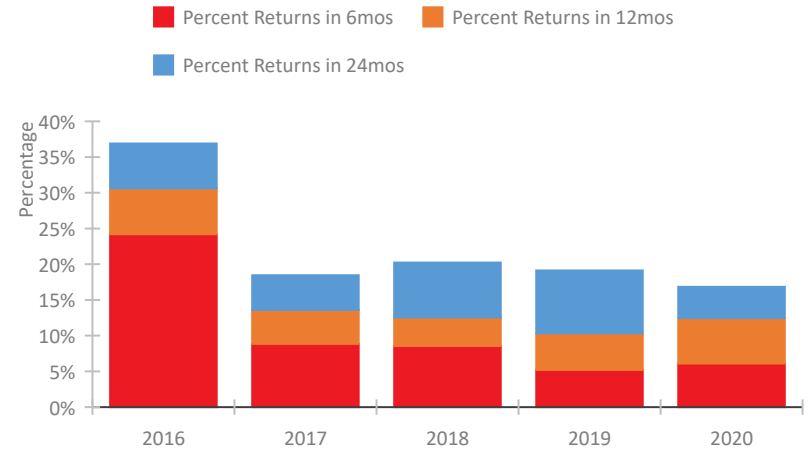


## CoC Performance Profile MI-509 Washtenaw County CoC

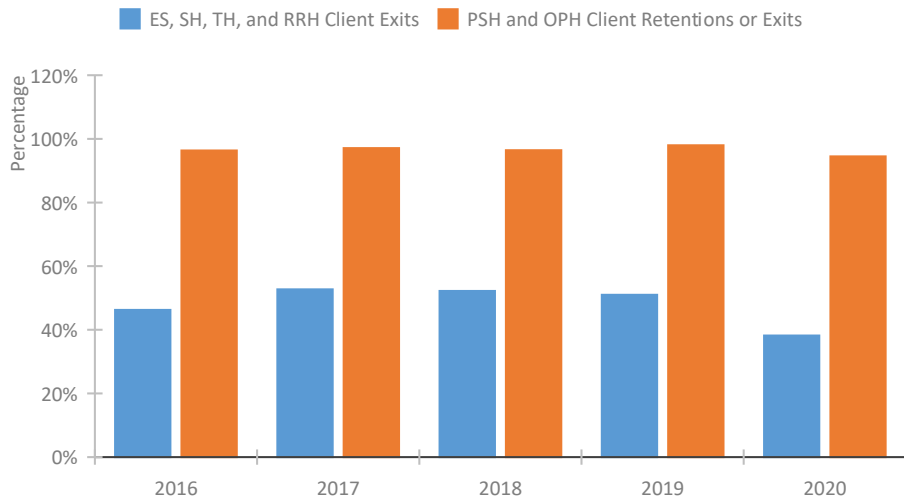
### Length of Time Homeless



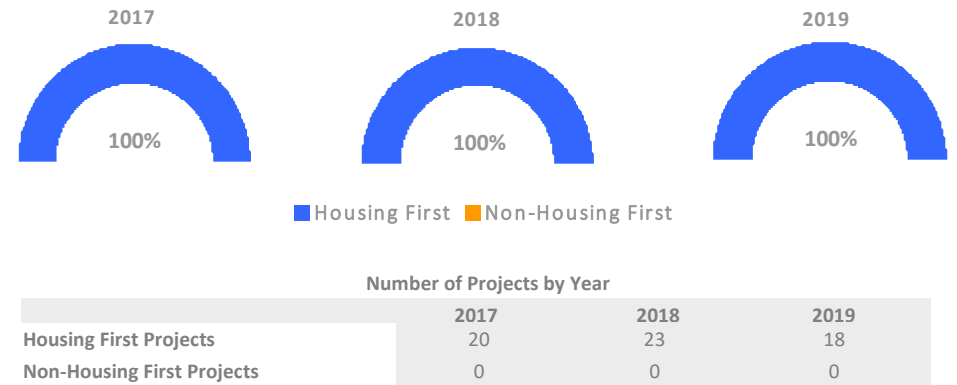
### Returns to Homelessness Over Time



### Exits to Permanent Housing by Program Type



### Proportion of Housing First Projects by Year\*



\*In 2020 HUD awarded renewal projects noncompetitively, therefore no new data was collected and Housing First data remains the same from 2019 to 2020.

## Data Summary: MI-509 Washtenaw County CoC

### Point-In-Time Count Summary

	2016	2017	2018	2019	2020	2019-20 Change	% Change
Number of Sheltered Persons in Families	79	58	72	80	81	1	1%
Number of Unsheltered Persons in Families	0	2	0	0	0	0	--
Number of Sheltered Individuals	222	204	183	181	176	-5	-3%
Number of Unsheltered Individuals	41	38	27	12	17	5	42%
<b>Total Homeless Persons</b>	<b>342</b>	<b>302</b>	<b>282</b>	<b>273</b>	<b>274</b>	<b>1</b>	<b>0%</b>
Number of Sheltered Families	23	20	23	24	24	0	-0%
Number of Unsheltered Families	0	1	0	0	0	0	--
<b>Number of Total Families</b>	<b>23</b>	<b>21</b>	<b>23</b>	<b>24</b>	<b>24</b>	<b>0</b>	<b>-0%</b>
Sheltered Chronically Homeless Individuals	39	29	36	51	49	-2	-4%
Unsheltered Chronically Homeless Individuals	16	12	9	7	10	3	43%
<b>Total Chronically Homeless Individuals</b>	<b>55</b>	<b>41</b>	<b>45</b>	<b>58</b>	<b>59</b>	<b>1</b>	<b>2%</b>
Sheltered Veterans	41	35	25	19	24	5	26%
Unsheltered Veterans	0	3	1	0	1	1	100%
<b>Total Veterans</b>	<b>41</b>	<b>38</b>	<b>26</b>	<b>19</b>	<b>25</b>	<b>6</b>	<b>32%</b>
Sheltered Unaccompanied Youth (up to 24)	19	21	25	27	16	-11	-41%
Unsheltered Unaccompanied Youth (up to 24)	2	2	0	2	1	-1	-50%
<b>Total Unaccompanied Youth (up to 24)</b>	<b>21</b>	<b>23</b>	<b>25</b>	<b>29</b>	<b>17</b>	<b>-12</b>	<b>-41%</b>

### System Performance Measures Summary

	2016	2017	2018	2018	2020	2019-20 Change	% Change
Average Length of Time Homeless (days)	67	62	61	63	88	25	39.7%
Rate People Return to Homelessness in 6 Months	24.2%	8.8%	8.6%	5.2%	6.1%	0.9%	N/A
Number of People who are Homeless for the First Time	1,323	1,025	890	978	886	-92	-9.4%
Rate People Exit from ES, SH, TH, and RRH to PH	46.3%	52.7%	52.2%	51.0%	38.2%	-12.8%	N/A
Rate People in PSH and OPH Retain or Exit to PH	96.3%	97.1%	96.4%	98.0%	94.5%	-3.5%	N/A

### Housing Inventory Count Summary

	2016	2017	2018	2019	2020	2019-20 Change	% Change
Emergency Shelter (ES)	195	167	175	178	247	69	39%
Transitional Housing (TH)	70	60	60	50	40	-10	-20%
Permanent Supportive Housing (PSH)	885	843	869	1,021	623	-398	-39%
Rapid Re-Housing (RRH)	295	270	256	266	264	-2	-1%

### Award Summary

	2016	2017	2018	2019	2020	2019-20 Change	% Change
<b>Continuum of Care (CoC)</b>	\$5,733,891	\$5,755,670	\$5,973,785	\$6,225,899	\$6,606,529	\$380,630	6%
<b>Emergency Solutions Grants (ESG)</b>	\$166,266	\$167,288	\$166,259	\$178,973	\$186,587	\$7,614	4%