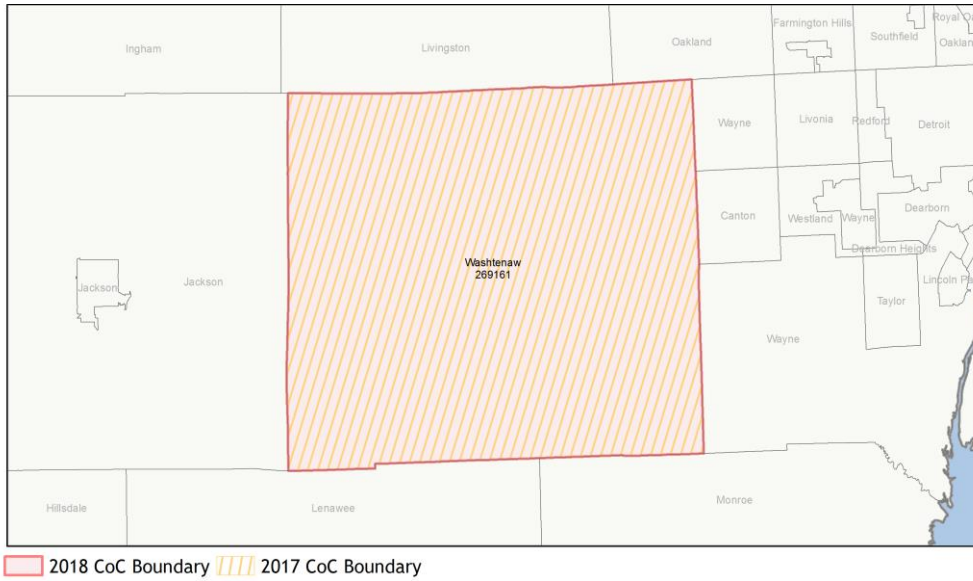
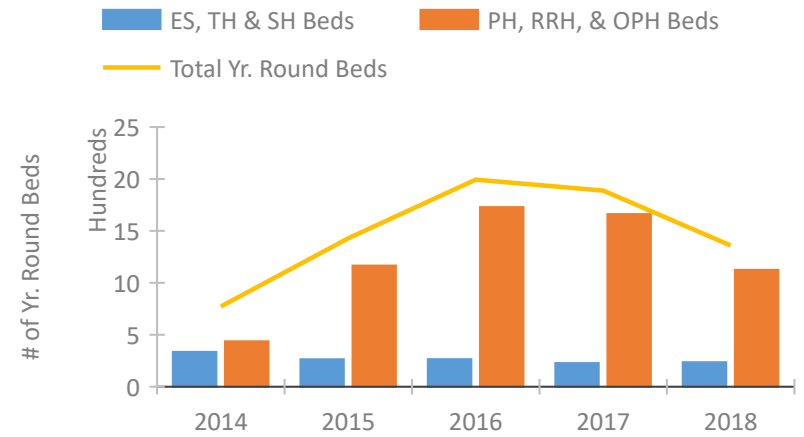


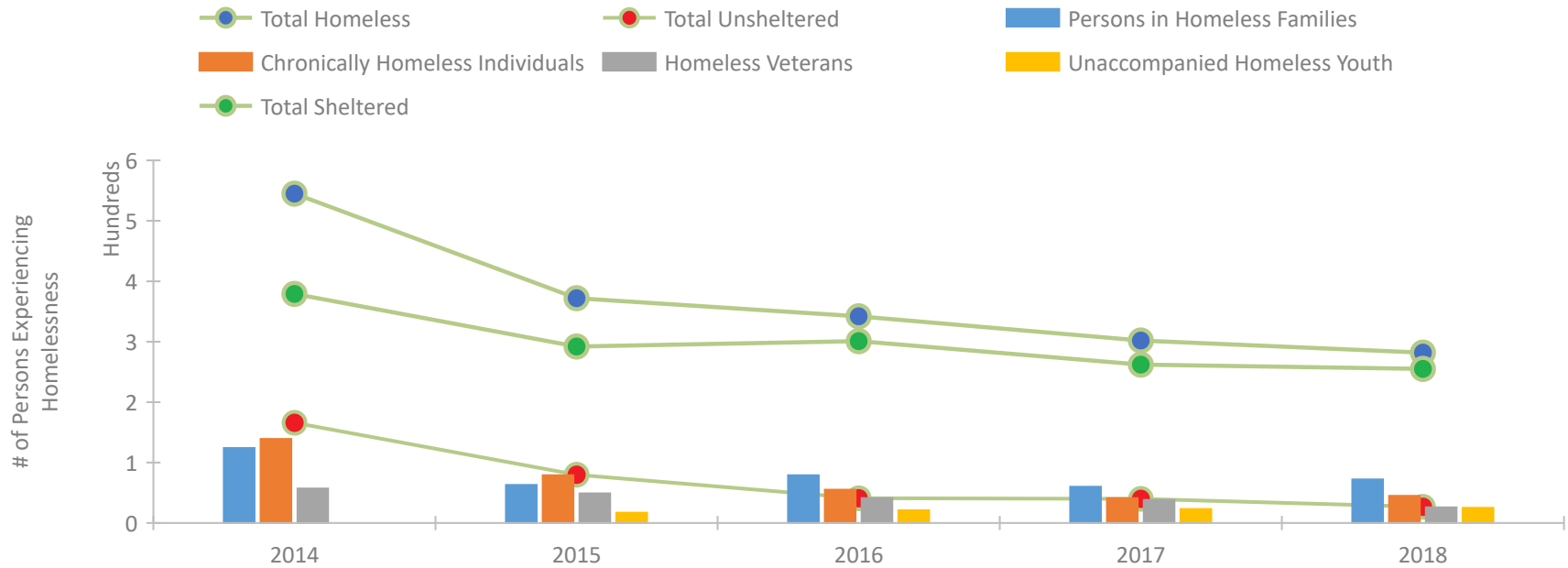
CoC Performance Profile MI-509 Washtenaw County CoC



Housing Inventory Count by Program Type

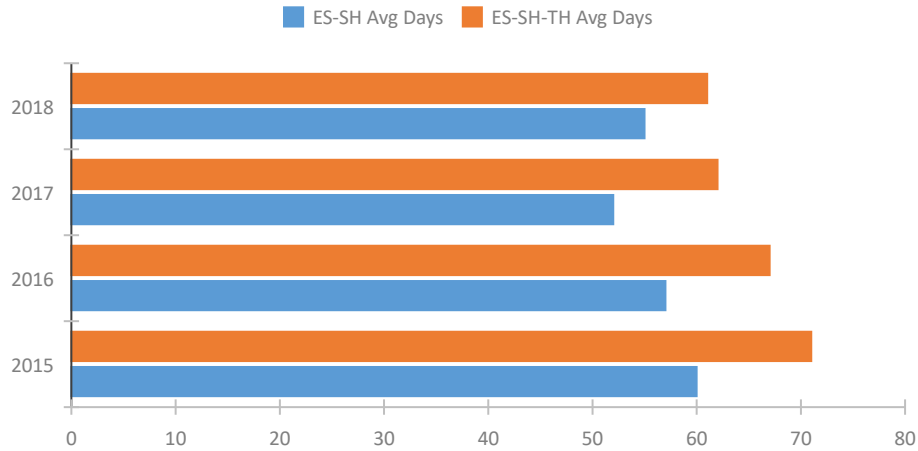


Homeless Population – Point-in-Time (PIT) Count

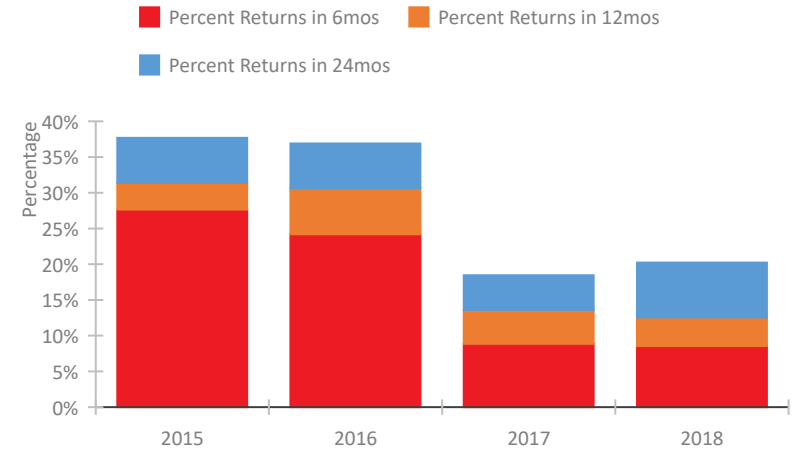


CoC Performance Profile MI-509 Washtenaw County CoC

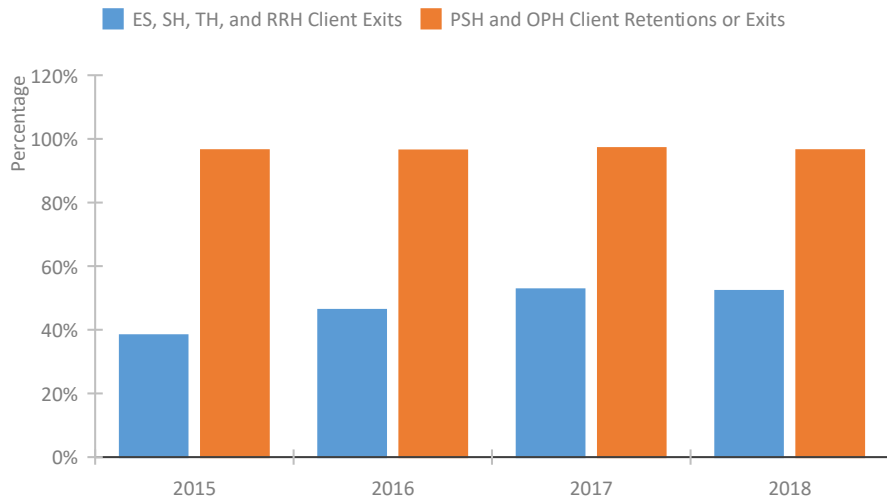
Length of Time Homeless



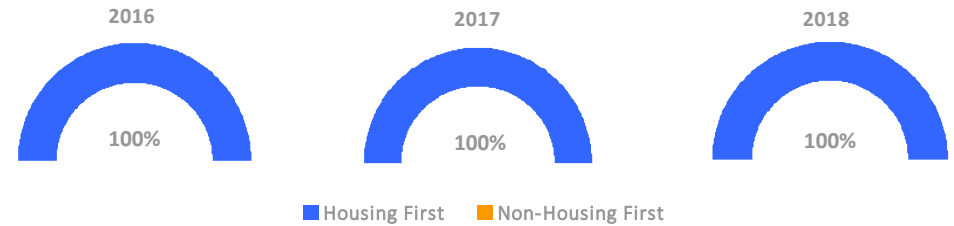
Returns to Homelessness Over Time



Exits to Permanent Housing by Program Type



Proportion of Housing First Projects by Year



Number of Projects by Year

	2016	2017	2018
Housing First Projects	19	20	23
Non-Housing First Projects	0	0	0

Data Summary: MI-509 Washtenaw County CoC

Point-In-Time Count Summary

	2014	2015	2016	2017	2018	2017-18 Change	% Change
Number of Sheltered Persons in Families	107	63	79	58	72	14	24%
Number of Unsheltered Persons in Families	17	0	0	2	0	-2	-100%
Number of Sheltered Individuals	272	229	222	204	183	-21	-10%
Number of Unsheltered Individuals	149	80	41	38	27	-11	-29%
Total Homeless Persons	545	372	342	302	282	-20	-7%
Number of Sheltered Families	32	17	23	20	23	3	15%
Number of Unsheltered Families	5	0	0	1	0	-1	-100%
Number of Total Families	37	17	23	21	23	2	10%
Sheltered Chronically Homeless Individuals	82	54	39	29	36	7	24%
Unsheltered Chronically Homeless Individuals	57	25	16	12	9	-3	-25%
Total Chronically Homeless Individuals	139	79	55	41	45	4	10%
Sheltered Veterans	47	44	41	35	25	-10	-29%
Unsheltered Veterans	10	5	0	3	1	-2	-67%
Total Veterans	57	49	41	38	26	-12	-32%
Sheltered Unaccompanied Youth (up to 24)	--	13	19	21	25	4	19%
Unsheltered Unaccompanied Youth (up to 24)	--	4	2	2	0	-2	-100%
Total Unaccompanied Youth (up to 24)	--	17	21	23	25	2	9%

System Performance Measures Summary

	2014	2015	2016	2017	2018	2017-18 Change	% Change
Average Length of Time Homeless (days)	N/A	71	67	62	61	-1	-1.6%
Rate People Return to Homelessness in 6 Months	N/A	27.7%	24.2%	8.8%	8.6%	-0.3%	N/A
Number of People who are Homeless for the First Time	N/A	1402	1323	1025	890	-135	-13.2%
Rate People Exit from ES, SH, TH, and RRH to PH	N/A	38.3%	46.3%	52.7%	52.2%	-0.5%	N/A
Rate People in PSH and OPH Retain or Exit to PH	N/A	96.4%	96.3%	97.1%	96.4%	-0.7%	N/A

Housing Inventory Count Summary

	2014	2015	2016	2017	2018	2017-18 Change	% Change
Emergency Shelter (ES)	196	195	195	167	175	8	5%
Transitional Housing (TH)	140	69	70	60	60	0	0%
Permanent Supportive Housing (PSH)	380	410	885	843	869	26	3%
Rapid Re-Housing (RRH)	18	41	295	270	256	-14	-5%

Award Summary

	2014	2015	2016	2017	2018	2017-18 Change	% Change
Continuum of Care (CoC)	\$5,105,523	\$5,708,538	\$5,733,891	\$5,755,670	\$5,973,785	\$218,115	4%
Emergency Solutions Grants (ESG)	\$156,155	\$163,362	\$166,266	\$167,288	\$166,259	(\$1,029)	-1%