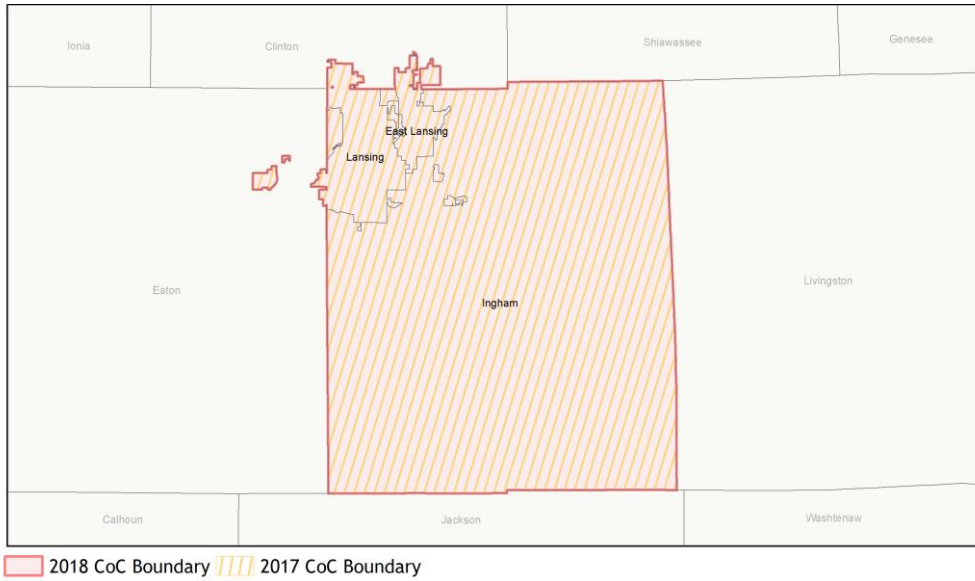
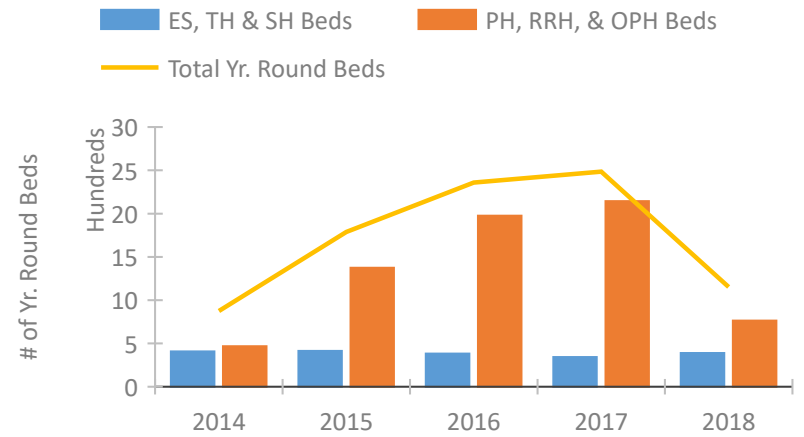


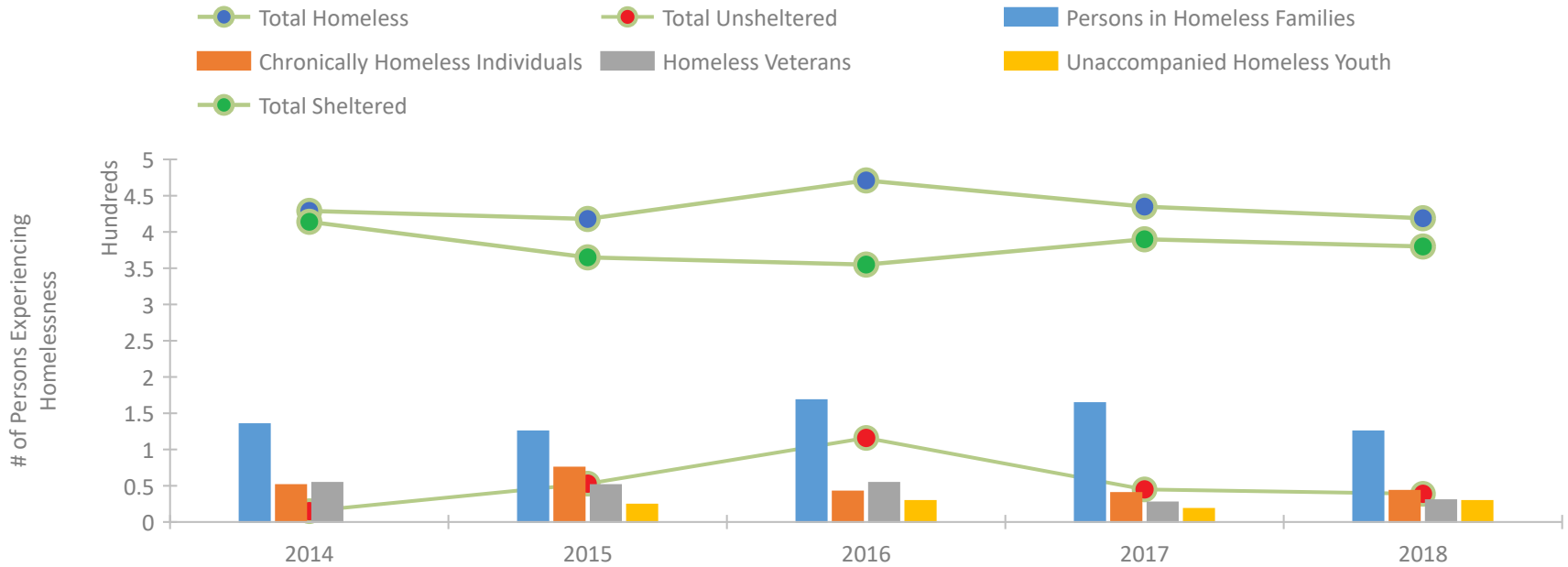
CoC Performance Profile MI-508 Lansing, East Lansing/Ingham County CoC



Housing Inventory Count by Program Type

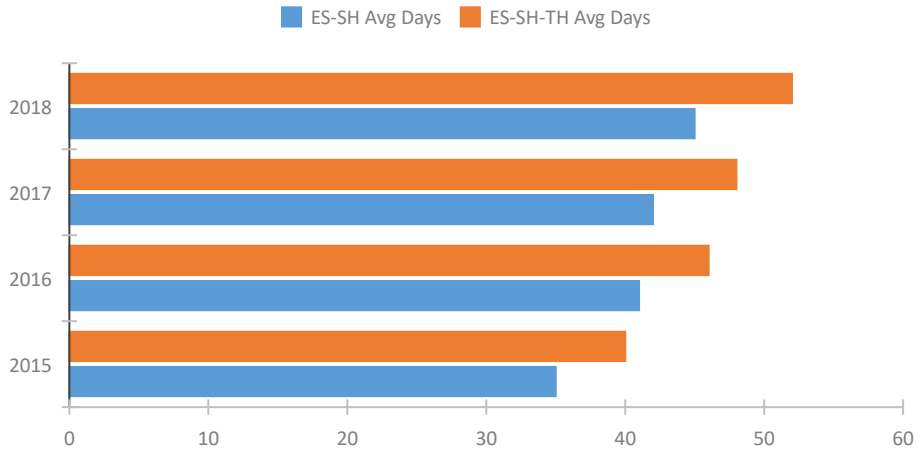


Homeless Population – Point-in-Time (PIT) Count

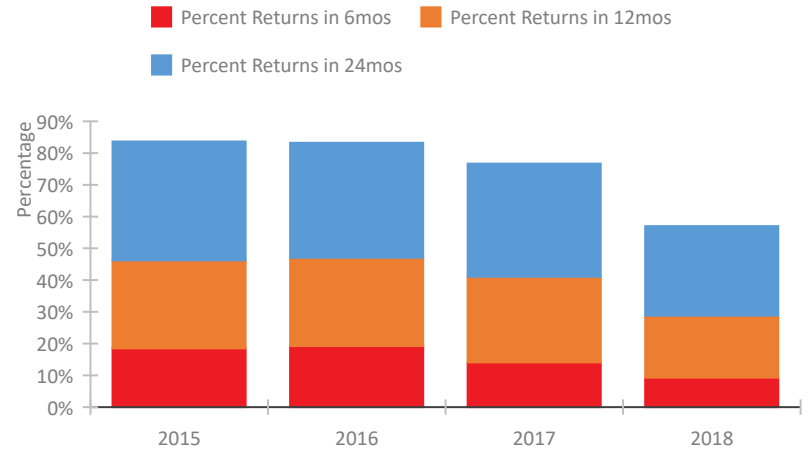


CoC Performance Profile MI-508 Lansing, East Lansing/Ingham County CoC

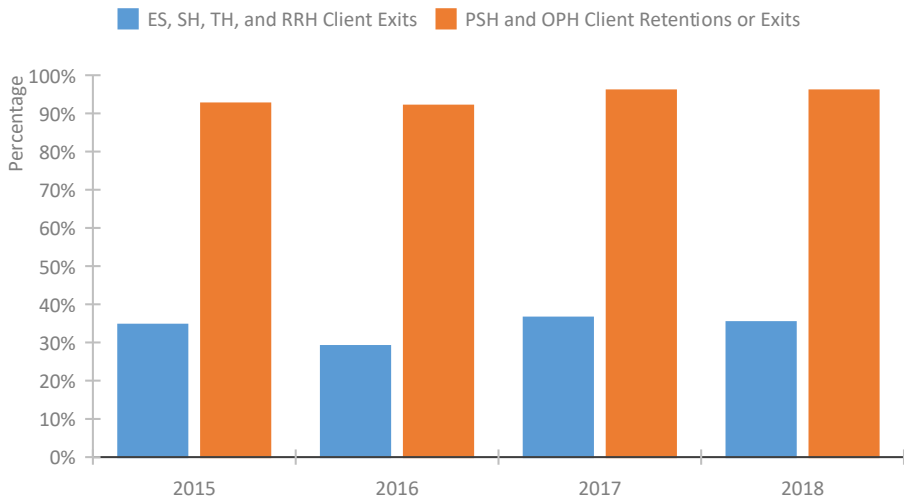
Length of Time Homeless



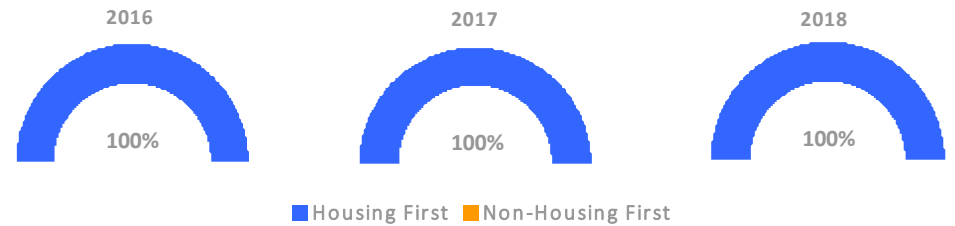
Returns to Homelessness Over Time



Exits to Permanent Housing by Program Type



Proportion of Housing First Projects by Year



Number of Projects by Year

	2016	2017	2018
Housing First Projects	14	13	15
Non-Housing First Projects	0	0	0

Data Summary: MI-508 Lansing, East Lansing/Ingham County CoC

Point-In-Time Count Summary

	2014	2015	2016	2017	2018	2017-18 Change	% Change
Number of Sheltered Persons in Families	135	125	117	159	125	-34	-21%
Number of Unsheltered Persons in Families	0	0	51	5	0	-5	-100%
Number of Sheltered Individuals	279	240	238	231	255	24	10%
Number of Unsheltered Individuals	15	53	65	40	39	-1	-2%
Total Homeless Persons	429	418	471	435	419	-16	-4%
Number of Sheltered Families	43	37	36	40	37	-3	-8%
Number of Unsheltered Families	0	0	13	2	0	-2	-100%
Number of Total Families	43	37	49	42	37	-5	-12%
Sheltered Chronically Homeless Individuals	45	51	32	26	38	12	46%
Unsheltered Chronically Homeless Individuals	6	24	10	14	5	-9	-64%
Total Chronically Homeless Individuals	51	75	42	40	43	3	8%
Sheltered Veterans	53	47	43	25	28	3	12%
Unsheltered Veterans	1	4	11	2	2	0	0%
Total Veterans	54	51	54	27	30	3	11%
Sheltered Unaccompanied Youth (up to 24)	--	18	21	18	26	8	44%
Unsheltered Unaccompanied Youth (up to 24)	--	6	8	0	3	3	100%
Total Unaccompanied Youth (up to 24)	--	24	29	18	29	11	61%

System Performance Measures Summary

	2014	2015	2016	2017	2018	2017-18 Change	% Change
Length of Time Homeless	N/A	40	46	48	52	4	8.3%
Returns to Homelessness in 6 Months	N/A	18.5%	19.2%	14.1%	9.3%	-4.8%	N/A
First Time Homeless	N/A	2103	1978	2037	1817	-220	-10.8%
Exits to Permanent Housing (ES, SH, TH, RHH)	N/A	34.7%	29.1%	36.5%	35.3%	-1.2%	N/A
Retention of or Exits to Permanent Housing (PSH, OPH)	N/A	92.6%	92.0%	96.0%	96.0%	0%	N/A

Housing Inventory Count Summary

	2014	2015	2016	2017	2018	2017-18 Change	% Change
Emergency Shelter	335	340	304	283	322	39	14%
Safe Haven	--	--	--	--	9	--	--
Transitional Housing	72	73	79	59	58	-1	-2%
Permanent Supportive Housing	391	460	429	552	595	43	8%
Rapid Re-Housing	40	214	205	130	145	15	12%
Other Permanent Housing	36	701	1,342	1,462	24	-1,438	-98%

Award Summary

	2014	2015	2016	2017	2018	2017-18 Change	% Change
CoC	\$2,056,477	\$2,566,614	\$2,551,559	\$2,501,877	\$2,551,336	\$49,459	2%
ESG	\$154,673	\$166,686	\$167,841	\$166,766	\$167,605	\$839	1%