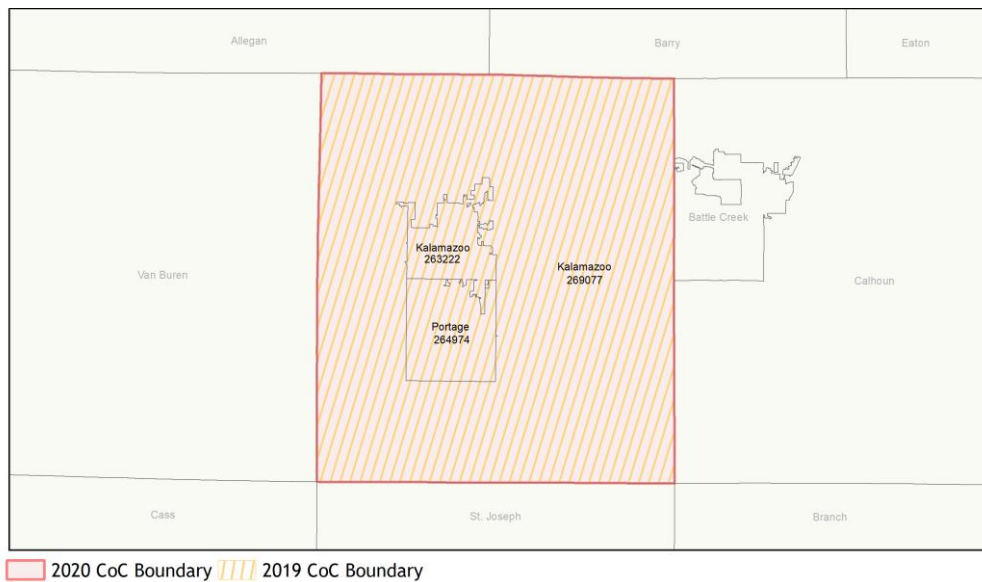
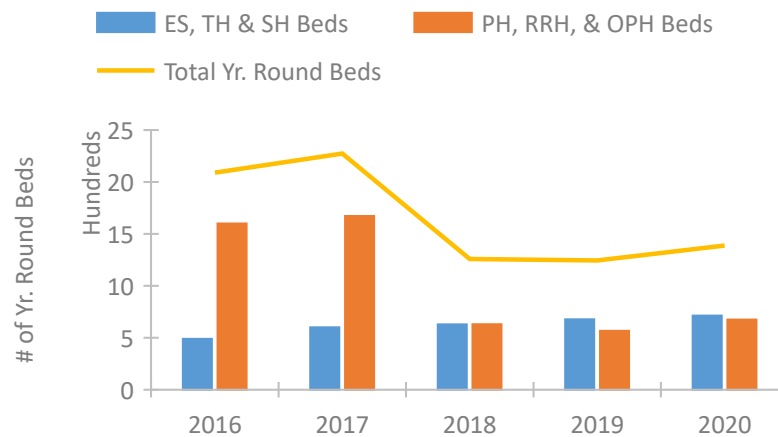


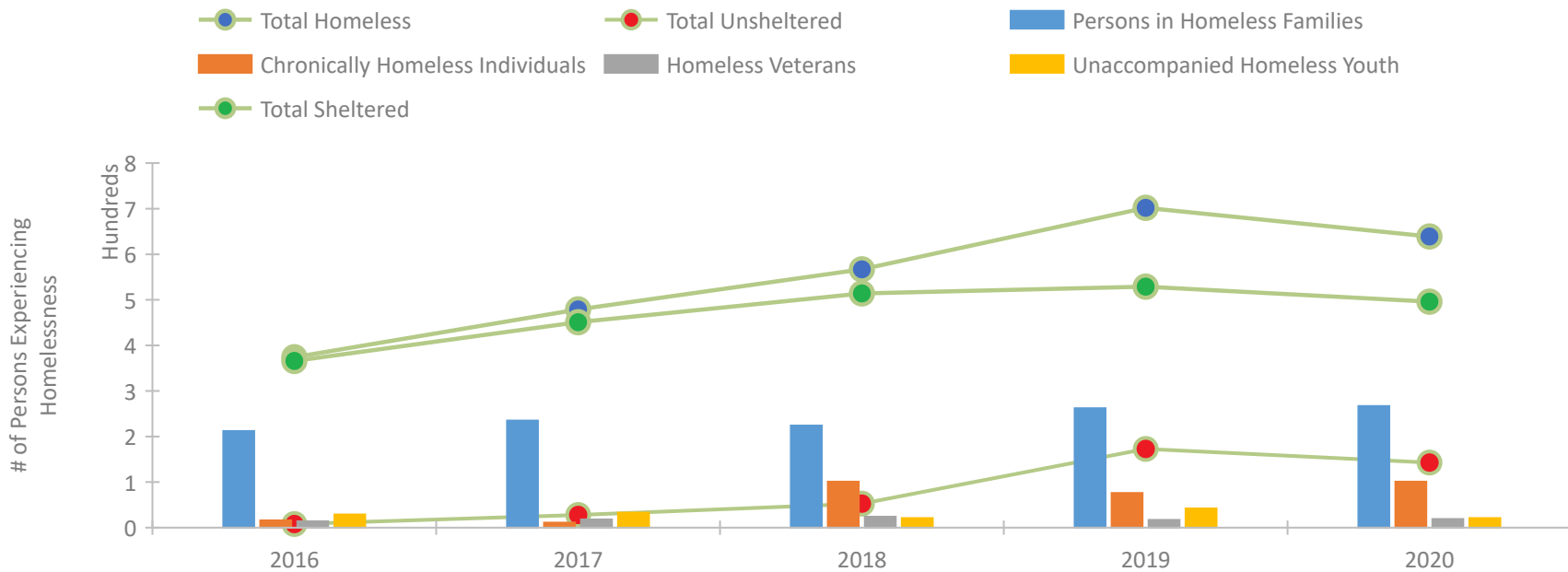
CoC Performance Profile MI-507 Portage, Kalamazoo City & County CoC



Housing Inventory Count by Program Type

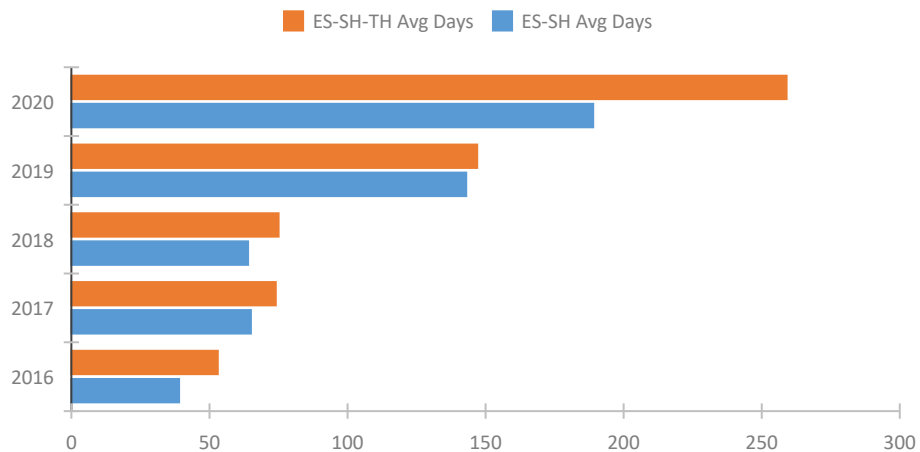


Homeless Population – Point-in-Time (PIT) Count

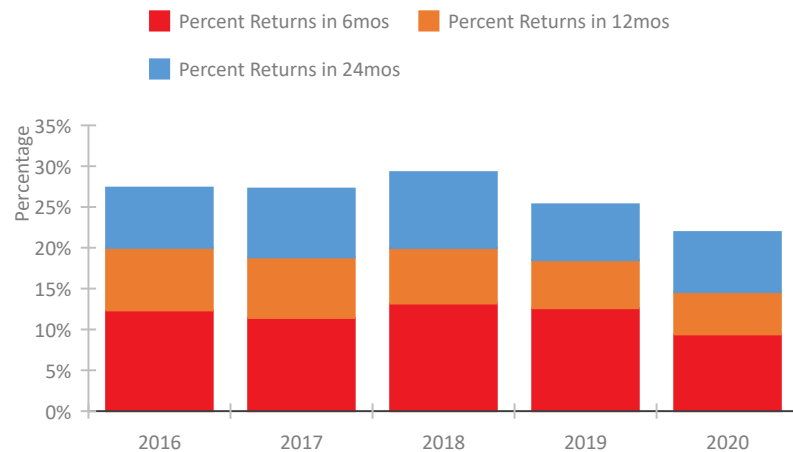


CoC Performance Profile MI-507 Portage, Kalamazoo City & County CoC

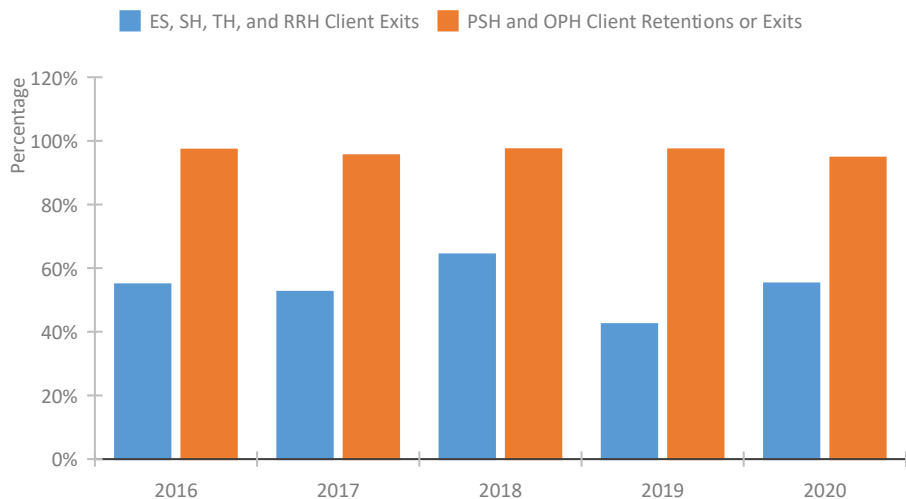
Length of Time Homeless



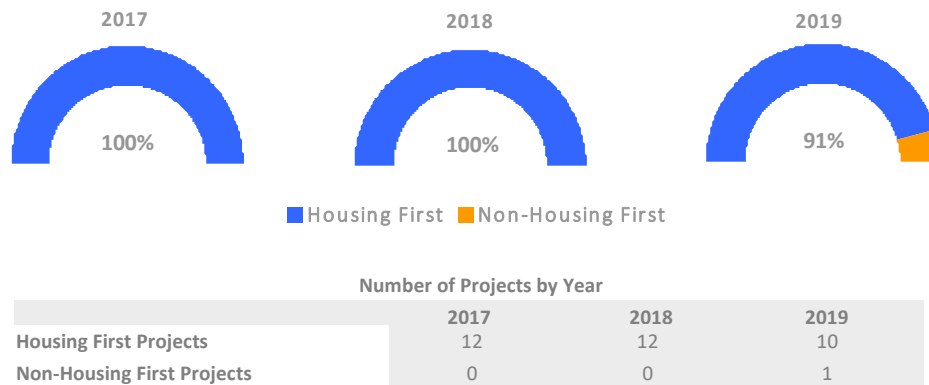
Returns to Homelessness Over Time



Exits to Permanent Housing by Program Type



Proportion of Housing First Projects by Year*



*In 2020 HUD awarded renewal projects noncompetitively, therefore no new data was collected and Housing First data remains the same from 2019 to 2020.

Data Summary: MI-507 Portage, Kalamazoo City & County CoC

Point-In-Time Count Summary

	2016	2017	2018	2019	2020	2019-20 Change	% Change
Number of Sheltered Persons in Families	212	235	222	245	229	-16	-7%
Number of Unsheltered Persons in Families	0	0	2	17	38	21	124%
Number of Sheltered Individuals	154	216	292	284	267	-17	-6%
Number of Unsheltered Individuals	8	28	51	156	105	-51	-33%
Total Homeless Persons	374	479	567	702	639	-63	-9%
Number of Sheltered Families	71	75	73	76	69	-7	-9%
Number of Unsheltered Families	0	0	1	6	11	5	83%
Number of Total Families	71	75	74	82	80	-2	-2%
Sheltered Chronically Homeless Individuals	16	11	79	35	69	34	97%
Unsheltered Chronically Homeless Individuals	0	0	22	41	32	-9	-22%
Total Chronically Homeless Individuals	16	11	101	76	101	25	33%
Sheltered Veterans	14	18	20	14	15	1	7%
Unsheltered Veterans	0	0	4	3	4	1	33%
Total Veterans	14	18	24	17	19	2	12%
Sheltered Unaccompanied Youth (up to 24)	27	30	18	41	19	-22	-54%
Unsheltered Unaccompanied Youth (up to 24)	2	3	3	1	2	1	100%
Total Unaccompanied Youth (up to 24)	29	33	21	42	21	-21	-50%

System Performance Measures Summary

	2016	2017	2018	2018	2020	2019-20 Change	% Change
Average Length of Time Homeless (days)	53	74	75	147	259	112	76.2%
Rate People Return to Homelessness in 6 Months	12.3%	11.4%	13.2%	12.6%	9.4%	-3.2%	N/A
Number of People who are Homeless for the First Time	2,124	1,943	1,047	916	987	71	7.8%
Rate People Exit from ES, SH, TH, and RRH to PH	54.9%	52.6%	64.3%	42.4%	55.2%	12.8%	N/A
Rate People in PSH and OPH Retain or Exit to PH	97.2%	95.5%	97.3%	97.3%	94.7%	-2.6%	N/A

Housing Inventory Count Summary

	2016	2017	2018	2019	2020	2019-20 Change	% Change
Emergency Shelter (ES)	387	530	555	618	661	43	7%
Transitional Housing (TH)	103	71	74	60	52	-8	-13%
Permanent Supportive Housing (PSH)	467	481	469	439	462	23	5%
Rapid Re-Housing (RRH)	11	118	89	60	86	26	43%
Other Permanent Housing (OPH)	1,081	1,074	72	68	127	59	87%

Award Summary

	2016	2017	2018	2019	2020	2019-20 Change	% Change
Continuum of Care (CoC)	\$1,730,134	\$1,695,277	\$1,672,455	\$1,566,257	\$1,714,409	\$148,152	9%
ESG (MI state recipient - no direct funding)	\$4,697,475	\$4,987,798	\$4,677,190	\$4,844,782	\$5,020,797	\$176,015	4%