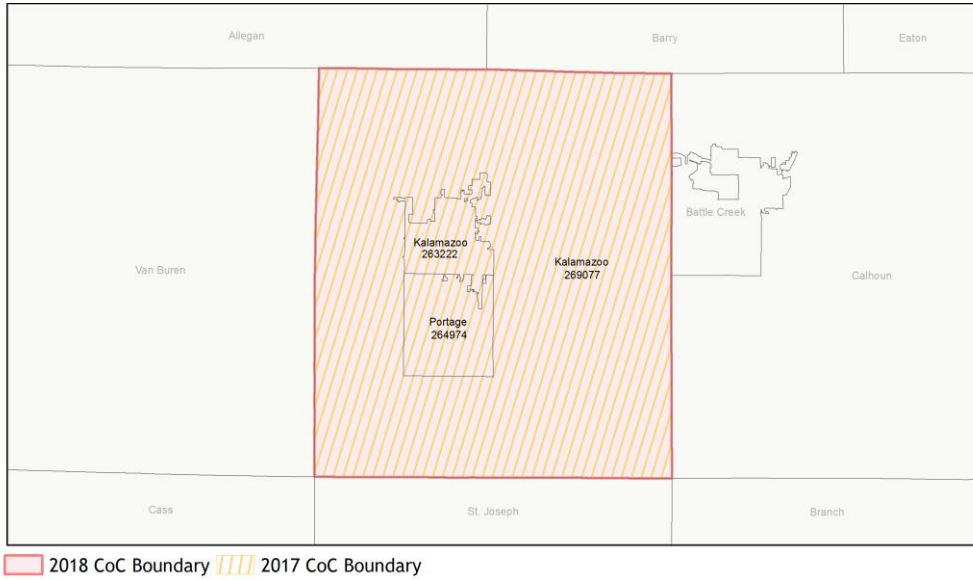
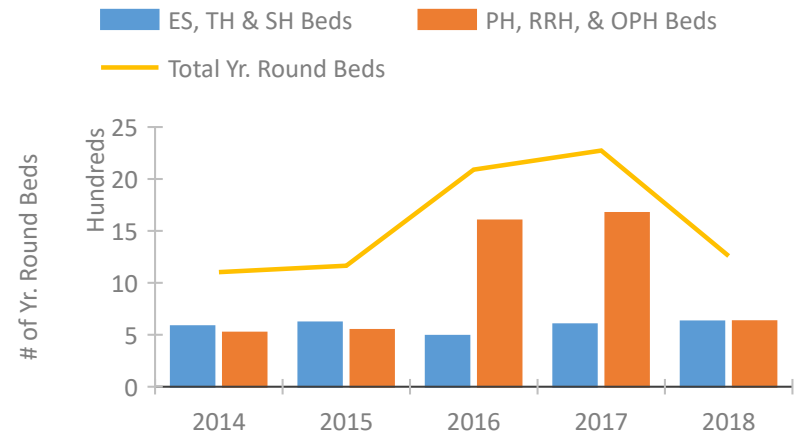


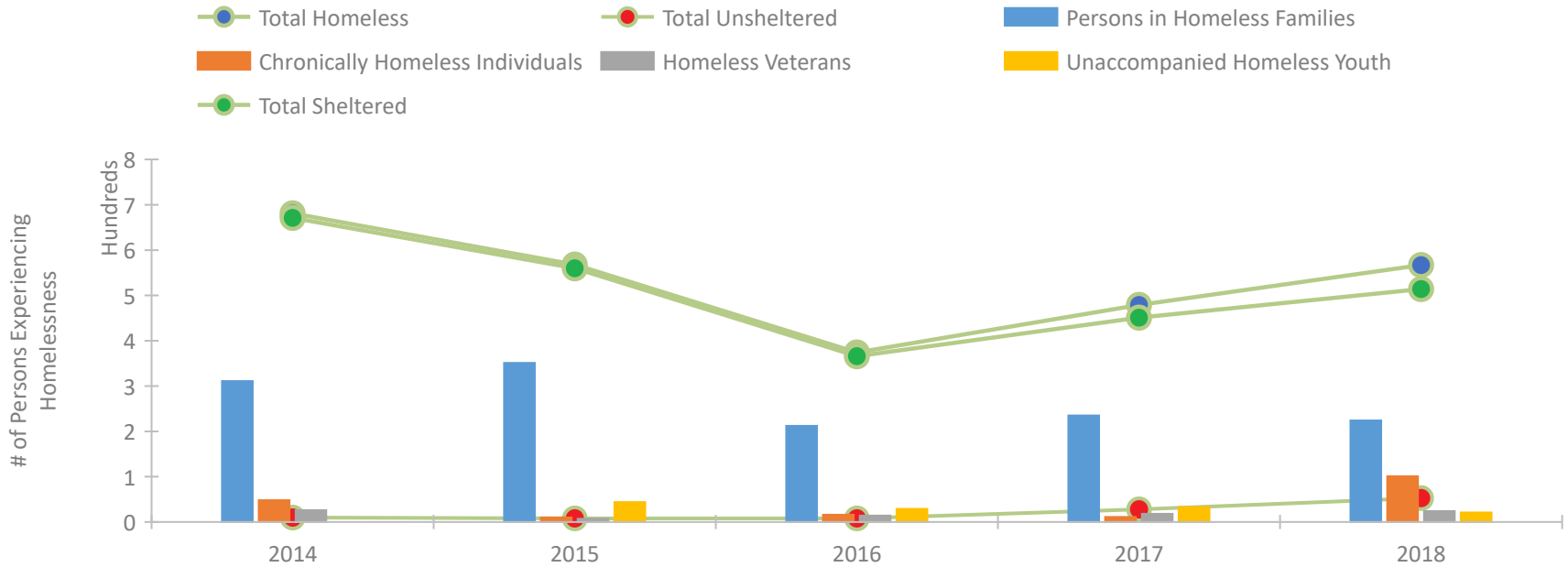
## CoC Performance Profile MI-507 Portage, Kalamazoo City & County CoC



### Housing Inventory Count by Program Type

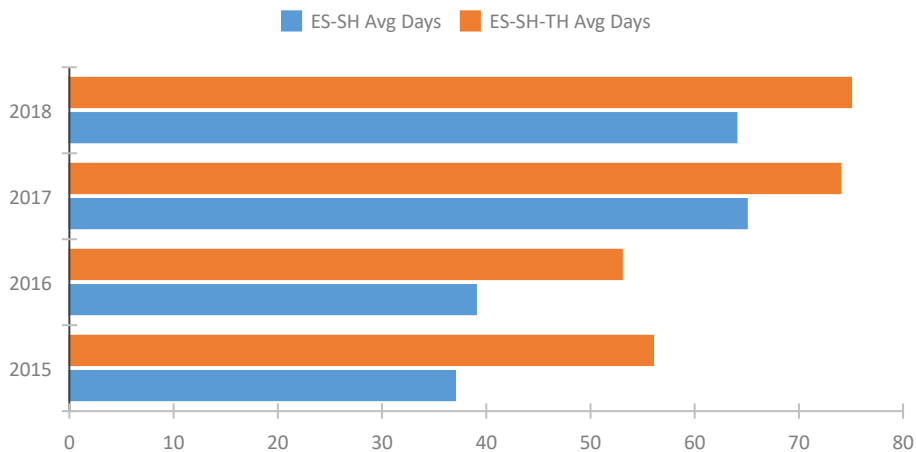


### Homeless Population – Point-in-Time (PIT) Count

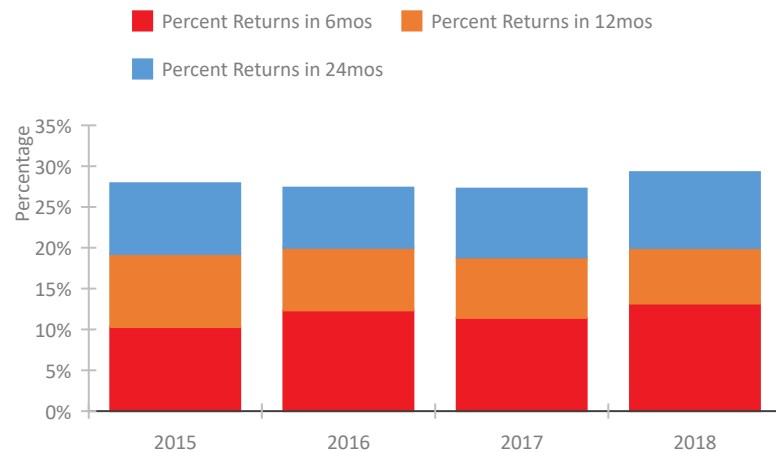


## CoC Performance Profile MI-507 Portage, Kalamazoo City & County CoC

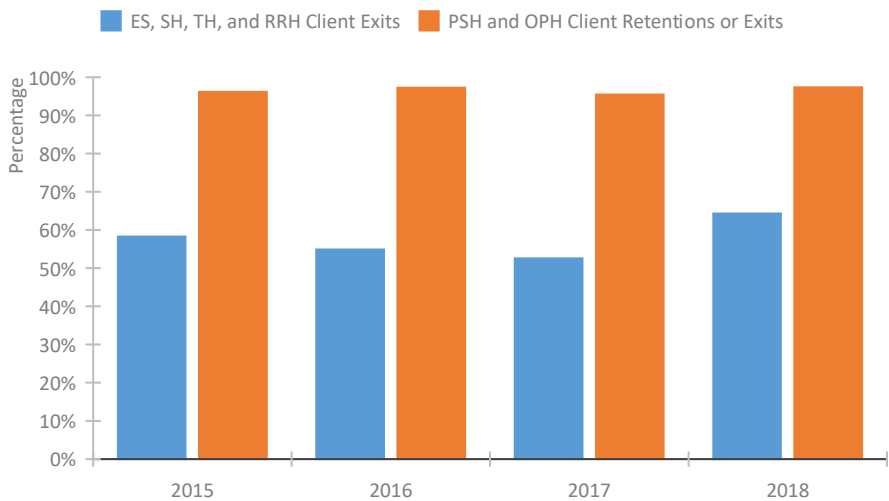
### Length of Time Homeless



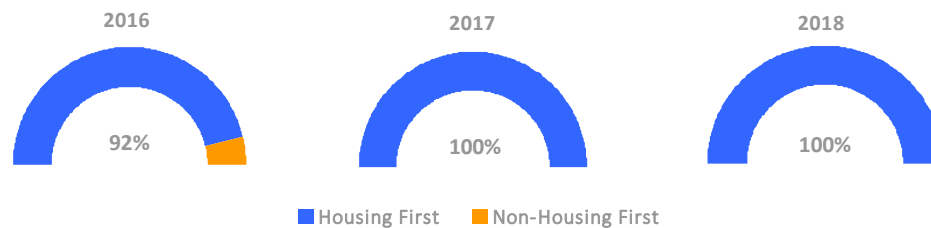
### Returns to Homelessness Over Time



### Exits to Permanent Housing by Program Type



### Proportion of Housing First Projects by Year



#### Number of Projects by Year

	2016	2017	2018
Housing First Projects	12	12	12
Non-Housing First Projects	1	0	0

## Data Summary: MI-507 Portage, Kalamazoo City & County CoC

### Point-In-Time Count Summary

	2014	2015	2016	2017	2018	2017-18 Change	% Change
Number of Sheltered Persons in Families	311	351	212	235	222	-13	-6%
Number of Unsheltered Persons in Families	0	0	0	0	2	2	100%
Number of Sheltered Individuals	360	209	154	216	292	76	35%
Number of Unsheltered Individuals	10	8	8	28	51	23	82%
<b>Total Homeless Persons</b>	<b>681</b>	<b>568</b>	<b>374</b>	<b>479</b>	<b>567</b>	<b>88</b>	<b>18%</b>
Number of Sheltered Families	96	107	71	75	73	-2	-3%
Number of Unsheltered Families	0	0	0	0	1	1	100%
<b>Number of Total Families</b>	<b>96</b>	<b>107</b>	<b>71</b>	<b>75</b>	<b>74</b>	<b>-1</b>	<b>-1%</b>
Sheltered Chronically Homeless Individuals	46	10	16	11	79	68	618%
Unsheltered Chronically Homeless Individuals	2	0	0	0	22	22	100%
<b>Total Chronically Homeless Individuals</b>	<b>48</b>	<b>10</b>	<b>16</b>	<b>11</b>	<b>101</b>	<b>90</b>	<b>818%</b>
Sheltered Veterans	26	7	14	18	20	2	11%
Unsheltered Veterans	0	0	0	0	4	4	100%
<b>Total Veterans</b>	<b>26</b>	<b>7</b>	<b>14</b>	<b>18</b>	<b>24</b>	<b>6</b>	<b>33%</b>
Sheltered Unaccompanied Youth (up to 24)	--	42	27	30	18	-12	-40%
Unsheltered Unaccompanied Youth (up to 24)	--	2	2	3	3	0	0%
<b>Total Unaccompanied Youth (up to 24)</b>	<b>--</b>	<b>44</b>	<b>29</b>	<b>33</b>	<b>21</b>	<b>-12</b>	<b>-36%</b>

### System Performance Measures Summary

	2014	2015	2016	2017	2018	2017-18 Change	% Change
Average Length of Time Homeless (days)	N/A	56	53	74	75	1	1.4%
Rate People Return to Homelessness in 6 Months	N/A	10.3%	12.3%	11.4%	13.2%	1.8%	N/A
Number of People who are Homeless for the First Time	N/A	2468	2124	1943	1047	-896	-46.1%
Rate People Exit from ES, SH, TH, and RRH to PH	N/A	58.3%	54.9%	52.6%	64.3%	11.7%	N/A
Rate People in PSH and OPH Retain or Exit to PH	N/A	96.1%	97.2%	95.5%	97.3%	1.9%	N/A

### Housing Inventory Count Summary

	2014	2015	2016	2017	2018	2017-18 Change	% Change
Emergency Shelter (ES)	377	387	387	530	555	25	5%
Transitional Housing (TH)	205	232	103	71	74	3	4%
Permanent Supportive Housing (PSH)	521	546	467	481	469	-12	-2%
Rapid Re-Housing (RRH)	--	--	11	118	89	-29	-25%
Other Permanent Housing (OPH)	--	--	1,081	1,074	72	-1,002	-93%

### Award Summary

	2014	2015	2016	2017	2018	2017-18 Change	% Change
<b>Continuum of Care (CoC)</b>	\$1,857,125	\$1,777,855	\$1,730,134	\$1,695,277	\$1,672,455	(\$22,822)	-1%
<b>ESG (MI state recipient - no direct funding)</b>	\$4,214,303	\$4,574,243	\$4,697,475	\$4,987,798	\$4,677,190	(\$310,608)	-6%