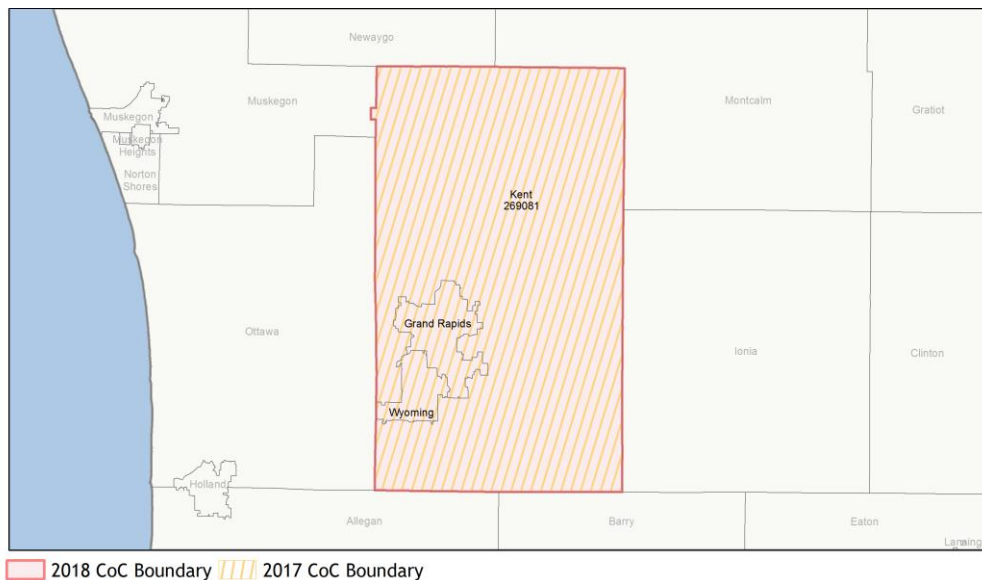
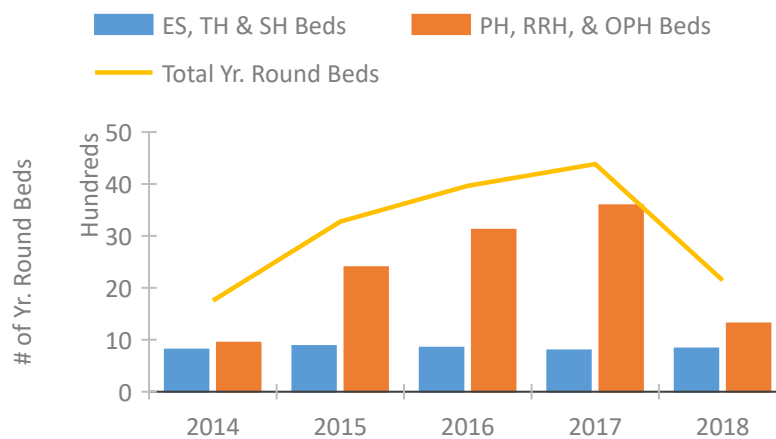


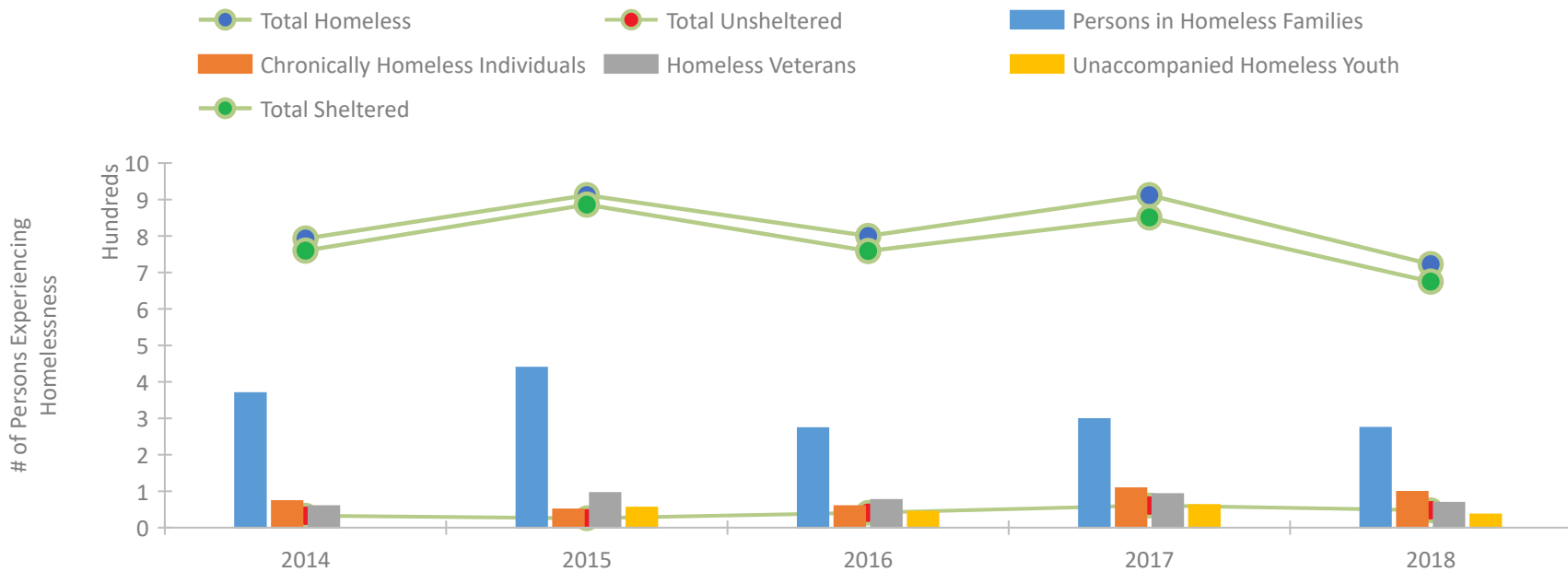
## CoC Performance Profile MI-506 Grand Rapids, Wyoming/Kent County CoC



### Housing Inventory Count by Program Type

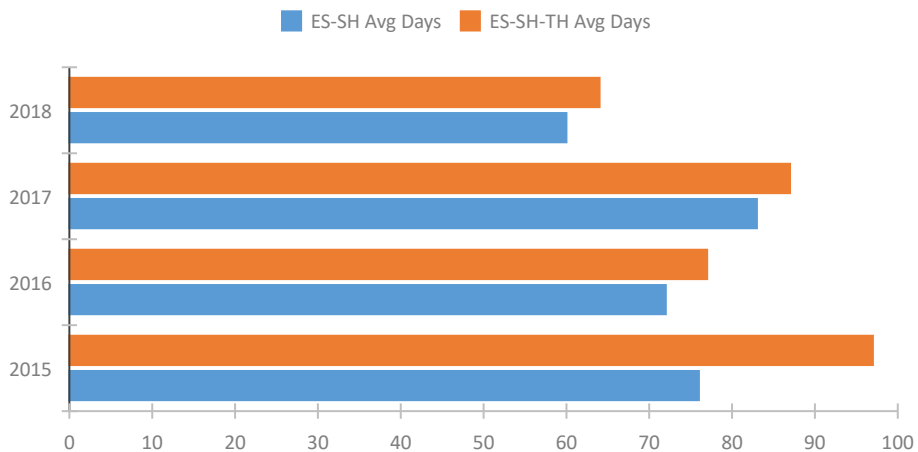


### Homeless Population – Point-in-Time (PIT) Count

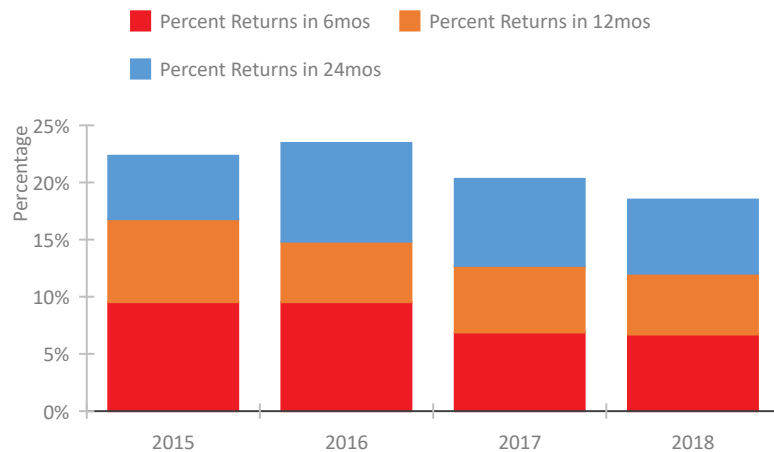


## CoC Performance Profile MI-506 Grand Rapids, Wyoming/Kent County CoC

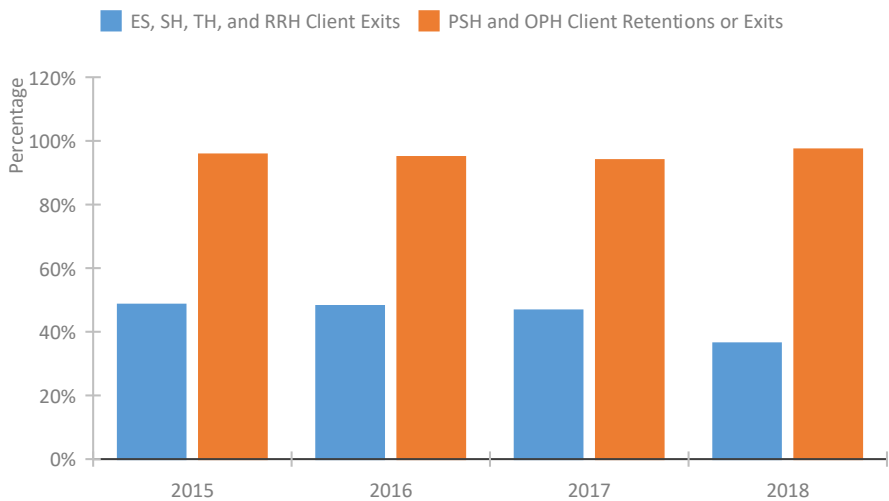
### Length of Time Homeless



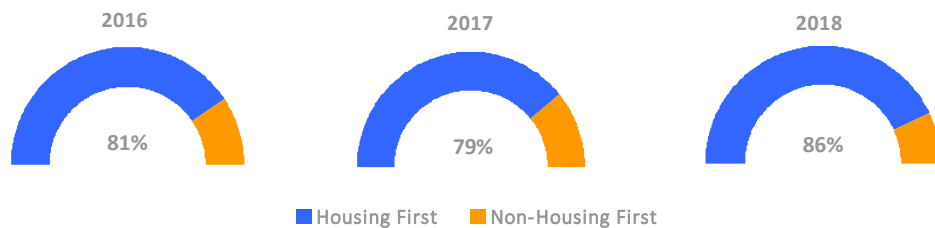
### Returns to Homelessness Over Time



### Exits to Permanent Housing by Program Type



### Proportion of Housing First Projects by Year



#### Number of Projects by Year

	2016	2017	2018
Housing First Projects	13	11	12
Non-Housing First Projects	3	3	2

**Data Summary: MI-506 Grand Rapids, Wyoming/Kent County CoC**

**Point-In-Time Count Summary**

	2014	2015	2016	2017	2018	2017-18 Change	% Change
Number of Sheltered Persons in Families	369	439	273	292	264	-28	-10%
Number of Unsheltered Persons in Families	0	0	0	6	10	4	67%
Number of Sheltered Individuals	391	447	486	559	411	-148	-26%
Number of Unsheltered Individuals	33	26	41	55	38	-17	-31%
<b>Total Homeless Persons</b>	<b>793</b>	<b>912</b>	<b>800</b>	<b>912</b>	<b>723</b>	<b>-189</b>	<b>-21%</b>
Number of Sheltered Families	113	136	83	79	70	-9	-11%
Number of Unsheltered Families	0	0	0	2	3	1	50%
<b>Number of Total Families</b>	<b>113</b>	<b>136</b>	<b>83</b>	<b>81</b>	<b>73</b>	<b>-8</b>	<b>-10%</b>
Sheltered Chronically Homeless Individuals	55	43	55	92	93	1	1%
Unsheltered Chronically Homeless Individuals	18	7	4	16	5	-11	-69%
<b>Total Chronically Homeless Individuals</b>	<b>73</b>	<b>50</b>	<b>59</b>	<b>108</b>	<b>98</b>	<b>-10</b>	<b>-9%</b>
Sheltered Veterans	55	91	71	83	65	-18	-22%
Unsheltered Veterans	4	4	5	9	3	-6	-67%
<b>Total Veterans</b>	<b>59</b>	<b>95</b>	<b>76</b>	<b>92</b>	<b>68</b>	<b>-24</b>	<b>-26%</b>
Sheltered Unaccompanied Youth (up to 24)	--	54	36	55	29	-26	-47%
Unsheltered Unaccompanied Youth (up to 24)	--	1	8	7	7	0	0%
<b>Total Unaccompanied Youth (up to 24)</b>	<b>--</b>	<b>55</b>	<b>44</b>	<b>62</b>	<b>36</b>	<b>-26</b>	<b>-42%</b>

**System Performance Measures Summary**

	2014	2015	2016	2017	2018	2017-18 Change	% Change
Average Length of Time Homeless (days)	N/A	97	77	87	64	-23	-26.4%
Rate People Return to Homelessness in 6 Months	N/A	9.5%	9.5%	6.9%	6.7%	-0.2%	N/A
Number of People who are Homeless for the First Time	N/A	2575	2970	2466	2817	351	14.2%
Rate People Exit from ES, SH, TH, and RRH to PH	N/A	48.5%	48.1%	46.7%	36.4%	-10.4%	N/A
Rate People in PSH and OPH Retain or Exit to PH	N/A	95.7%	94.9%	94.0%	97.3%	3.4%	N/A

**Housing Inventory Count Summary**

	2014	2015	2016	2017	2018	2017-18 Change	% Change
Emergency Shelter (ES)	275	357	618	588	624	36	6%
Transitional Housing (TH)	534	522	228	206	206	0	0%
Permanent Supportive Housing (PSH)	865	860	981	890	855	-35	-4%
Rapid Re-Housing (RRH)	61	206	236	274	414	140	51%
Other Permanent Housing (OPH)	18	1,330	1,903	2,426	45	-2,381	-98%

**Award Summary**

	2014	2015	2016	2017	2018	2017-18 Change	% Change
<b>Continuum of Care (CoC)</b>	\$5,121,687	\$5,503,523	\$5,511,453	\$5,678,115	\$6,297,388	\$619,273	11%
<b>Emergency Solutions Grants (ESG)</b>	\$125,812	\$455,066	\$316,210	\$310,225	\$446,223	\$135,998	44%