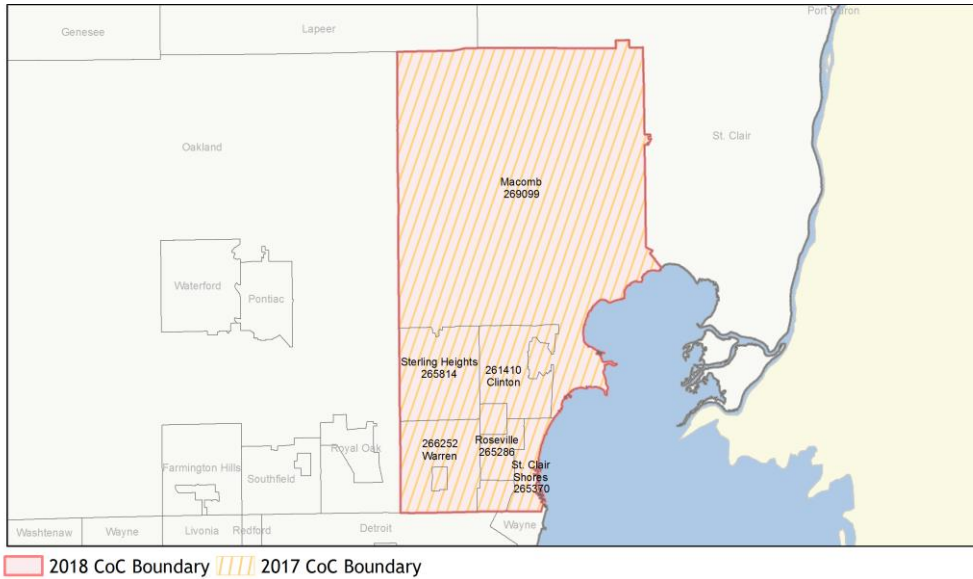
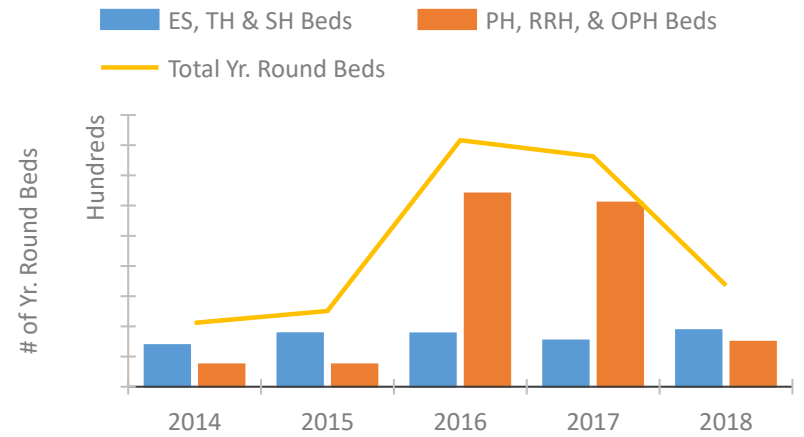


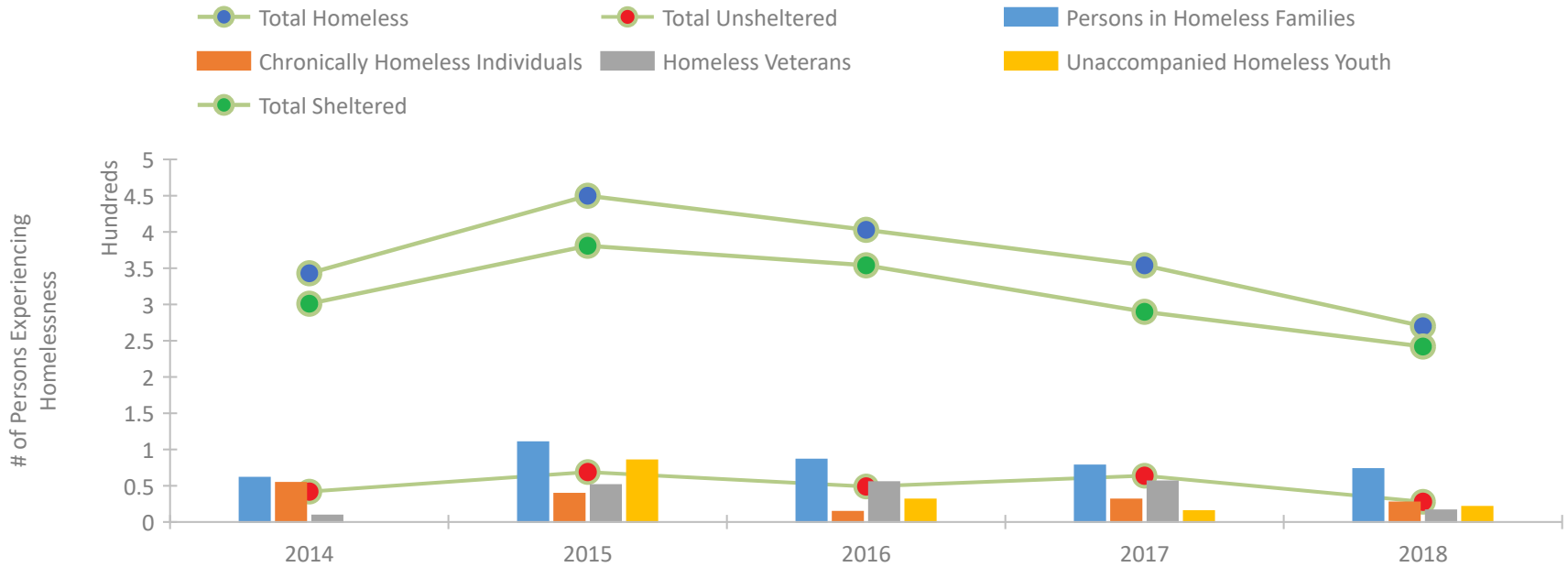
CoC Performance Profile MI-503 St. Clair Shores, Warren/Macomb County CoC



Housing Inventory Count by Program Type

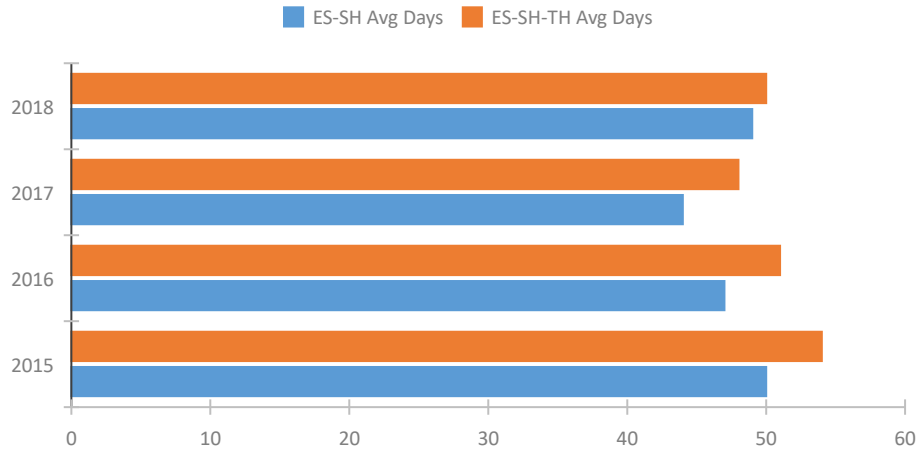


Homeless Population – Point-in-Time (PIT) Count

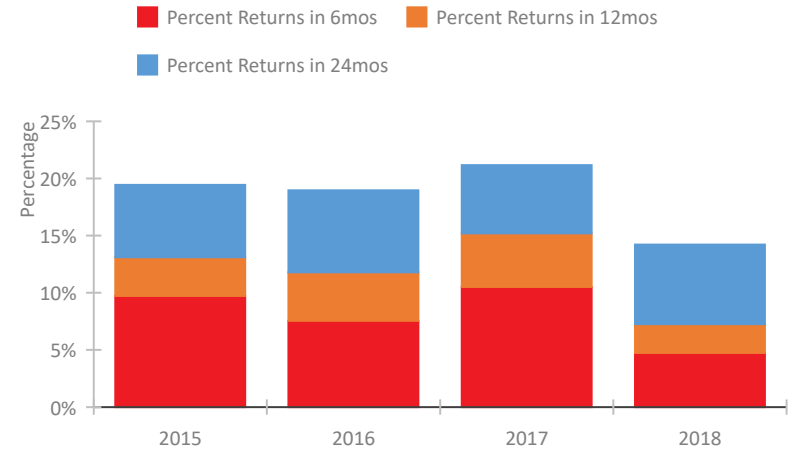


CoC Performance Profile MI-503 St. Clair Shores, Warren/Macomb County CoC

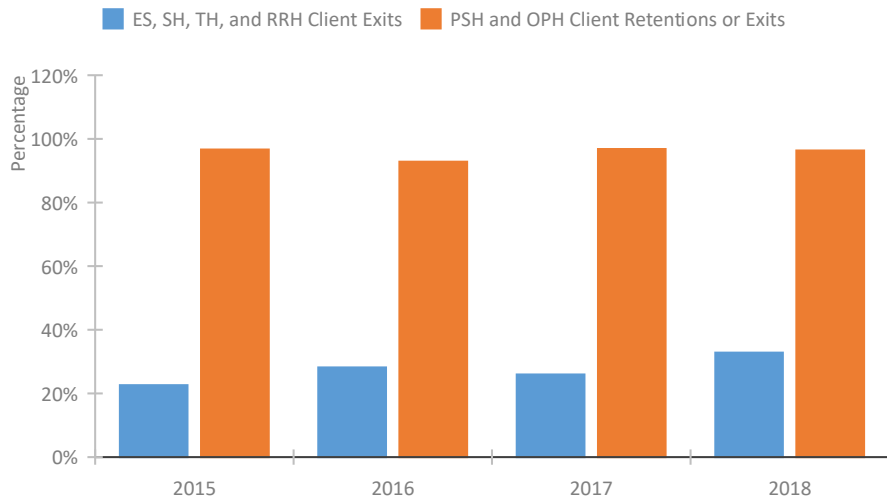
Length of Time Homeless



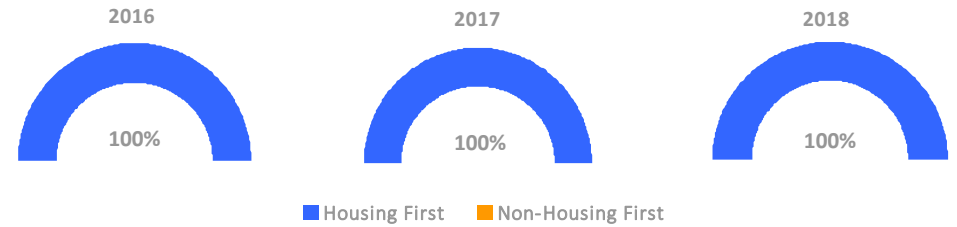
Returns to Homelessness Over Time



Exits to Permanent Housing by Program Type



Proportion of Housing First Projects by Year



Number of Projects by Year

	2016	2017	2018
Housing First Projects	12	12	13
Non-Housing First Projects	0	0	0

Data Summary: MI-503 St. Clair Shores, Warren/Macomb County CoC

Point-In-Time Count Summary

	2014	2015	2016	2017	2018	2017-18 Change	% Change
Number of Sheltered Persons in Families	61	110	86	78	73	-5	-6%
Number of Unsheltered Persons in Families	0	0	0	0	0	0	--
Number of Sheltered Individuals	240	271	268	212	169	-43	-20%
Number of Unsheltered Individuals	42	69	49	64	28	-36	-56%
Total Homeless Persons	343	450	403	354	270	-84	-24%
Number of Sheltered Families	28	33	30	28	27	-1	-4%
Number of Unsheltered Families	0	0	0	0	0	0	--
Number of Total Families	28	33	30	28	27	-1	-4%
Sheltered Chronically Homeless Individuals	49	16	10	28	27	-1	-4%
Unsheltered Chronically Homeless Individuals	5	23	4	3	0	-3	-100%
Total Chronically Homeless Individuals	54	39	14	31	27	-4	-13%
Sheltered Veterans	9	49	55	56	16	-40	-71%
Unsheltered Veterans	0	2	0	0	0	0	--
Total Veterans	9	51	55	56	16	-40	-71%
Sheltered Unaccompanied Youth (up to 24)	--	78	25	12	21	9	75%
Unsheltered Unaccompanied Youth (up to 24)	--	7	6	3	0	-3	-100%
Total Unaccompanied Youth (up to 24)	--	85	31	15	21	6	40%

System Performance Measures Summary

	2014	2015	2016	2017	2018	2017-18 Change	% Change
Average Length of Time Homeless (days)	N/A	54	51	48	50	2	4.2%
Rate People Return to Homelessness in 6 Months	N/A	9.7%	7.6%	10.5%	4.7%	-5.8%	N/A
Number of People who are Homeless for the First Time	N/A	1479	1459	1406	1202	-204	-14.5%
Rate People Exit from ES, SH, TH, and RRH to PH	N/A	22.6%	28.2%	25.9%	32.8%	6.9%	N/A
Rate People in PSH and OPH Retain or Exit to PH	N/A	96.6%	92.8%	96.8%	96.4%	-0.4%	N/A

Housing Inventory Count Summary

	2014	2015	2016	2017	2018	2017-18 Change	% Change
Emergency Shelter (ES)	164	178	176	182	246	64	35%
Safe Haven (SH)	--	25	25	16	9	-7	-44%
Transitional Housing (TH)	111	151	152	108	119	11	10%
Permanent Supportive Housing (PSH)	148	148	152	272	279	7	3%
Rapid Re-Housing (RRH)	--	--	33	31	18	-13	-42%

Award Summary

	2014	2015	2016	2017	2018	2017-18 Change	% Change
Continuum of Care (CoC)	\$1,335,357	\$1,197,681	\$1,198,139	\$1,248,683	\$1,276,212	\$27,529	2%
Emergency Solutions Grants (ESG)	\$135,660	\$150,746	\$152,906	\$155,280	\$154,440	(\$840)	-1%