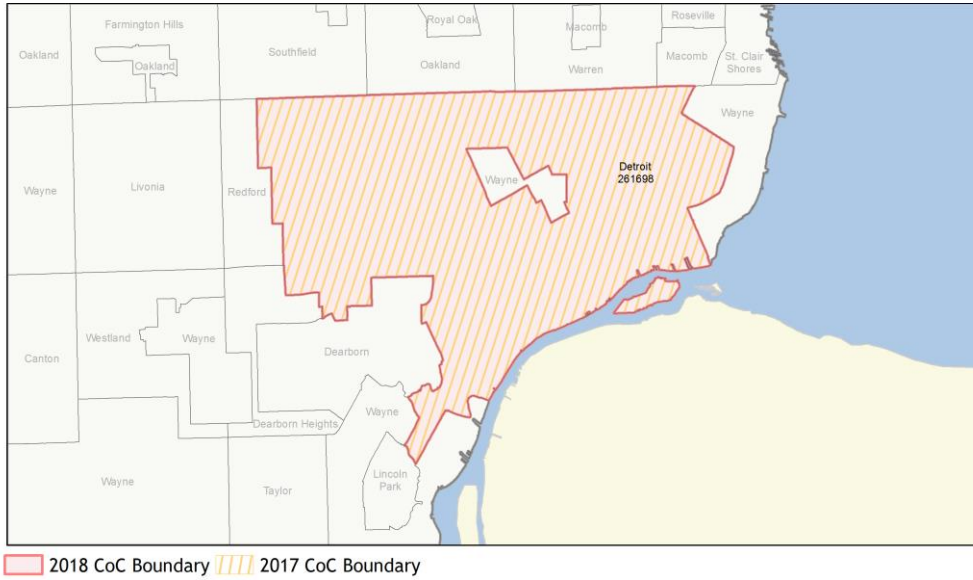
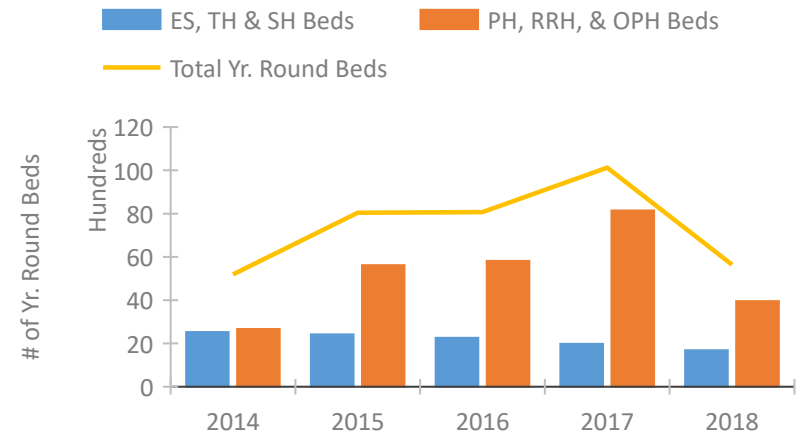


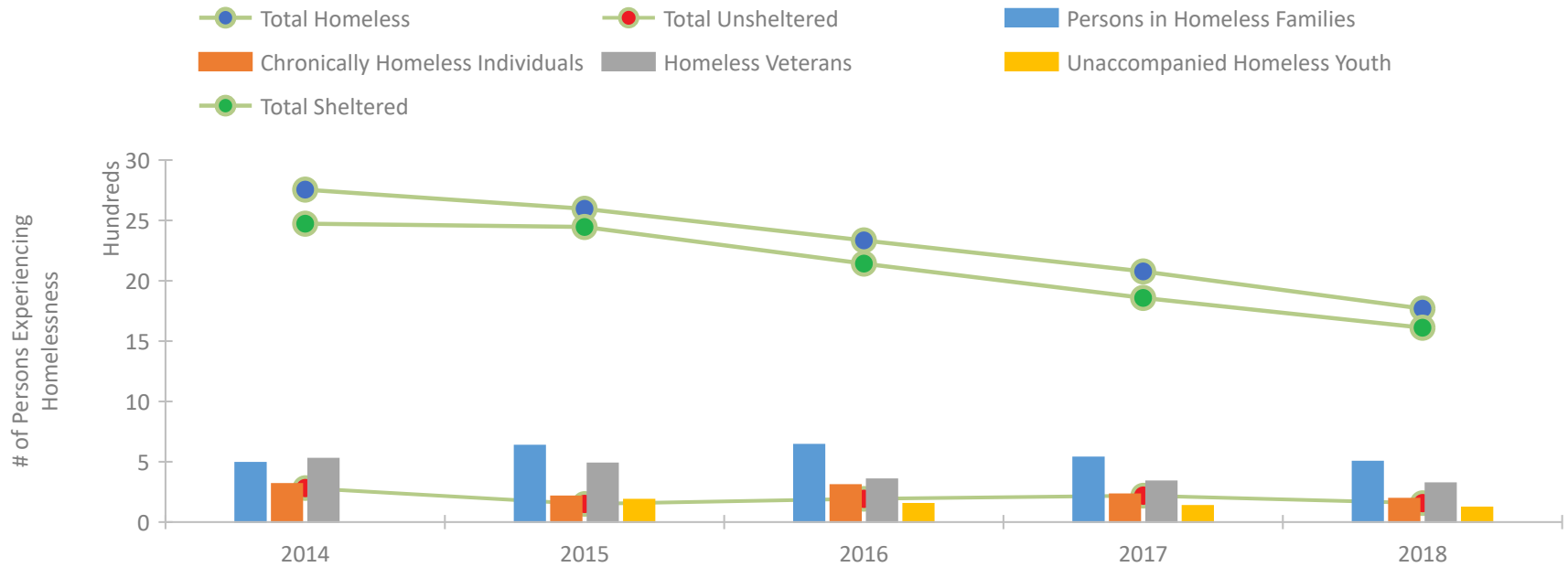
## CoC Performance Profile MI-501 Detroit CoC



### Housing Inventory Count by Program Type

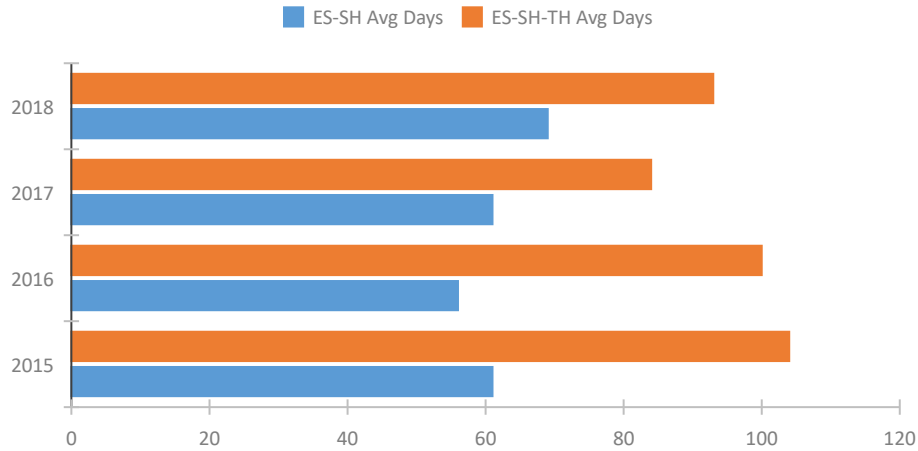


### Homeless Population – Point-in-Time (PIT) Count

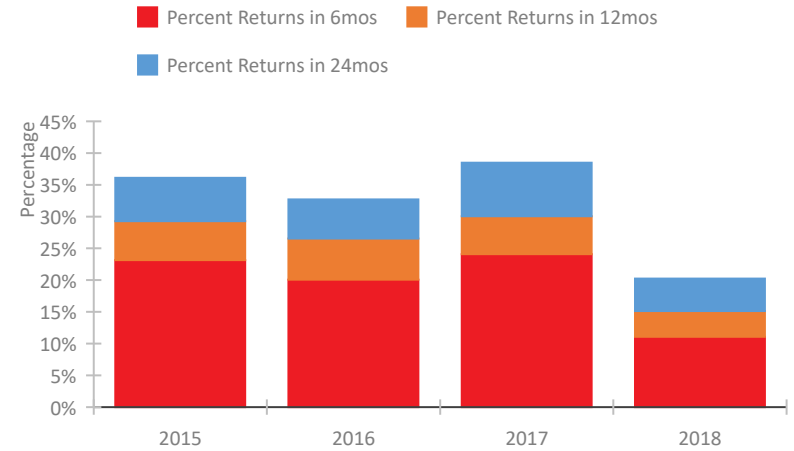


## CoC Performance Profile MI-501 Detroit CoC

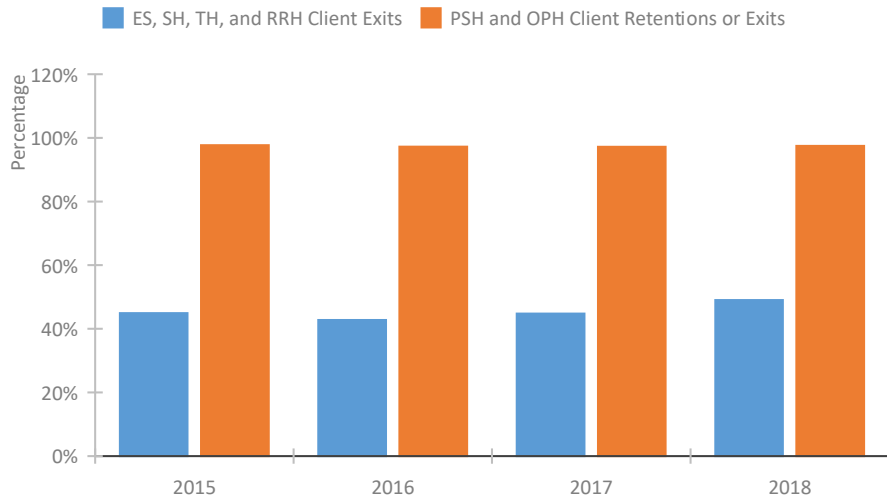
### Length of Time Homeless



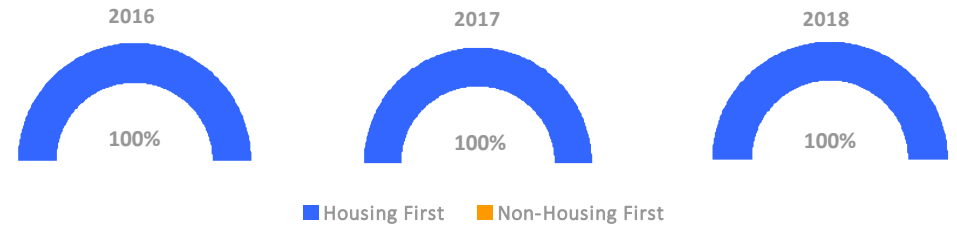
### Returns to Homelessness Over Time



### Exits to Permanent Housing by Program Type



### Proportion of Housing First Projects by Year



#### Number of Projects by Year

	2016	2017	2018
Housing First Projects	46	50	49
Non-Housing First Projects	0	0	0

## Data Summary: MI-501 Detroit CoC

### Point-In-Time Count Summary

	2014	2015	2016	2017	2018	2017-18 Change	% Change
Number of Sheltered Persons in Families	487	633	634	530	497	-33	-6%
Number of Unsheltered Persons in Families	4	0	7	5	4	-1	-20%
Number of Sheltered Individuals	1,986	1,813	1,508	1,328	1,114	-214	-16%
Number of Unsheltered Individuals	278	151	186	215	154	-61	-28%
<b>Total Homeless Persons</b>	<b>2,755</b>	<b>2,597</b>	<b>2,335</b>	<b>2,078</b>	<b>1,769</b>	<b>-309</b>	<b>-15%</b>
Number of Sheltered Families	175	209	217	178	166	-12	-7%
Number of Unsheltered Families	1	0	3	1	1	0	0%
<b>Number of Total Families</b>	<b>176</b>	<b>209</b>	<b>220</b>	<b>179</b>	<b>167</b>	<b>-12</b>	<b>-7%</b>
Sheltered Chronically Homeless Individuals	208	133	204	125	130	5	4%
Unsheltered Chronically Homeless Individuals	108	80	103	105	63	-42	-40%
<b>Total Chronically Homeless Individuals</b>	<b>316</b>	<b>213</b>	<b>307</b>	<b>230</b>	<b>193</b>	<b>-37</b>	<b>-16%</b>
Sheltered Veterans	514	480	336	320	305	-15	-5%
Unsheltered Veterans	11	6	18	17	17	0	0%
<b>Total Veterans</b>	<b>525</b>	<b>486</b>	<b>354</b>	<b>337</b>	<b>322</b>	<b>-15</b>	<b>-4%</b>
Sheltered Unaccompanied Youth (up to 24)	--	175	146	130	111	-19	-15%
Unsheltered Unaccompanied Youth (up to 24)	--	10	5	4	9	5	125%
<b>Total Unaccompanied Youth (up to 24)</b>	<b>--</b>	<b>185</b>	<b>151</b>	<b>134</b>	<b>120</b>	<b>-14</b>	<b>-10%</b>

### System Performance Measures Summary

	2014	2015	2016	2017	2018	2017-18 Change	% Change
Average Length of Time Homeless (days)	N/A	104	100	84	93	9	10.7%
Rate People Return to Homelessness in 6 Months	N/A	23.1%	20.1%	24.1%	11.1%	-13%	N/A
Number of People who are Homeless for the First Time	N/A	6919	5869	6106	4836	-1,270	-20.8%
Rate People Exit from ES, SH, TH, and RRH to PH	N/A	44.9%	42.8%	44.8%	49.0%	4.2%	N/A
Rate People in PSH and OPH Retain or Exit to PH	N/A	97.7%	97.2%	97.2%	97.5%	0.3%	N/A

### Housing Inventory Count Summary

	2014	2015	2016	2017	2018	2017-18 Change	% Change
Emergency Shelter (ES)	1,215	1,183	1,087	1,163	1,001	-162	-14%
Safe Haven (SH)	21	21	21	21	40	19	90%
Transitional Housing (TH)	1,285	1,217	1,152	797	646	-151	-19%
Permanent Supportive Housing (PSH)	2,507	2,294	2,476	2,843	3,006	163	6%
Rapid Re-Housing (RRH)	159	631	530	633	950	317	50%

### Award Summary

	2014	2015	2016	2017	2018	2017-18 Change	% Change
<b>Continuum of Care (CoC)</b>	\$26,457,858	\$26,130,090	\$23,271,331	\$25,461,727	\$26,921,844	\$1,460,117	6%
<b>Emergency Solutions Grants (ESG)</b>	\$2,670,892	\$2,862,103	\$2,838,335	\$2,824,376	\$2,816,974	(\$7,402)	0%