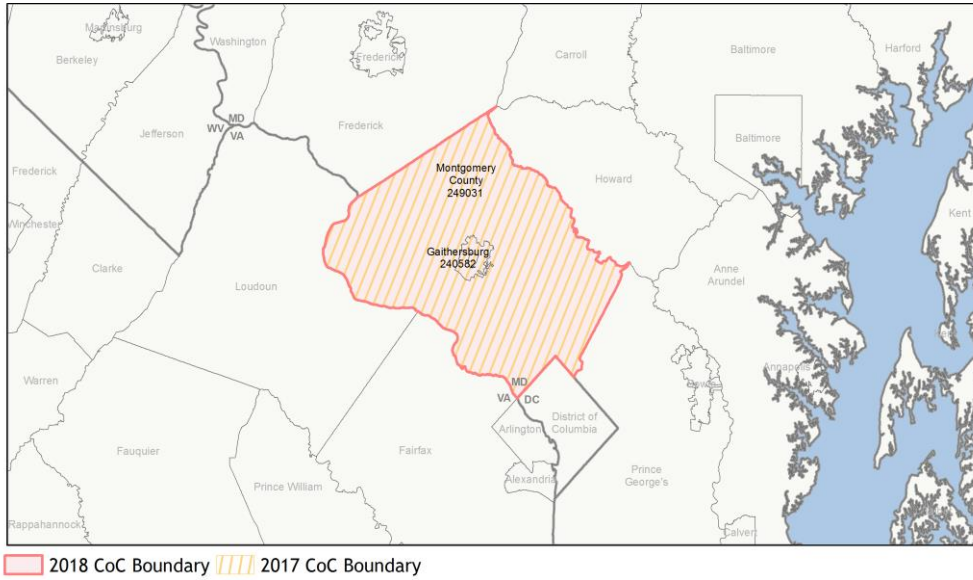
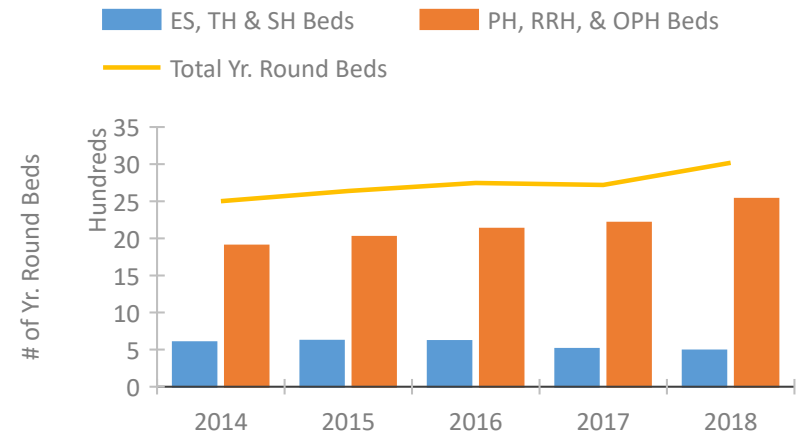


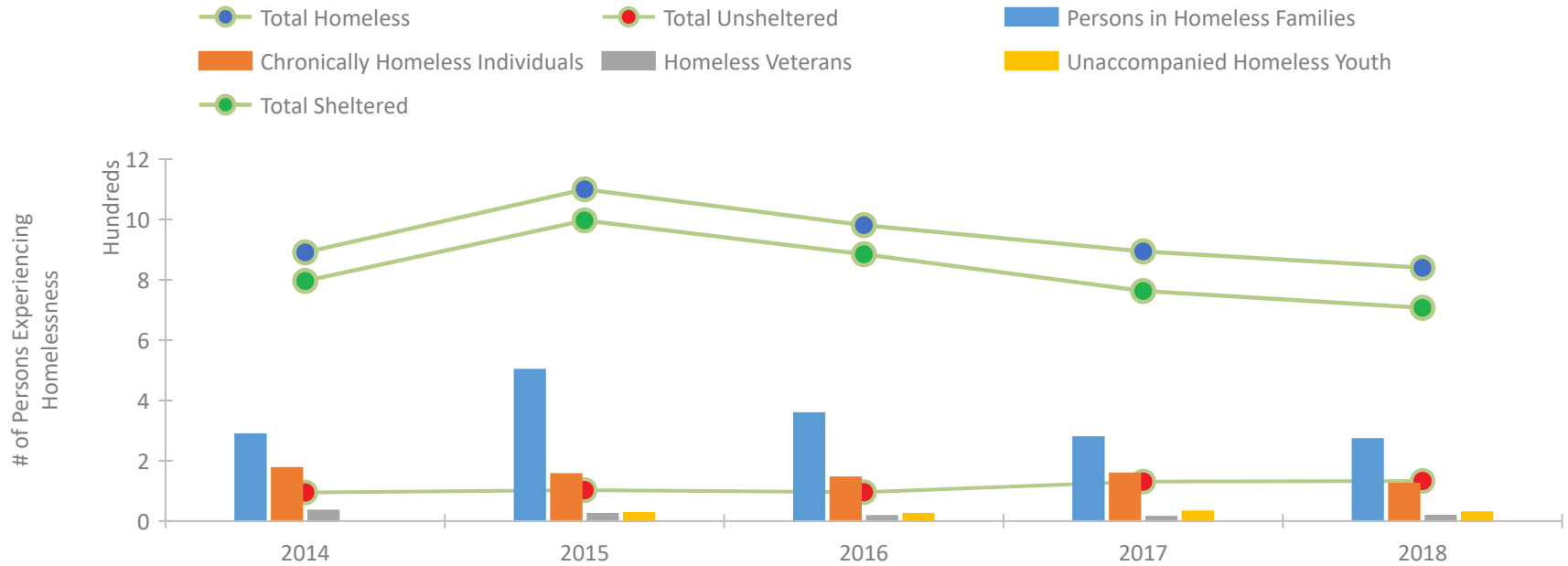
CoC Performance Profile MD-601 Montgomery County CoC



Housing Inventory Count by Program Type

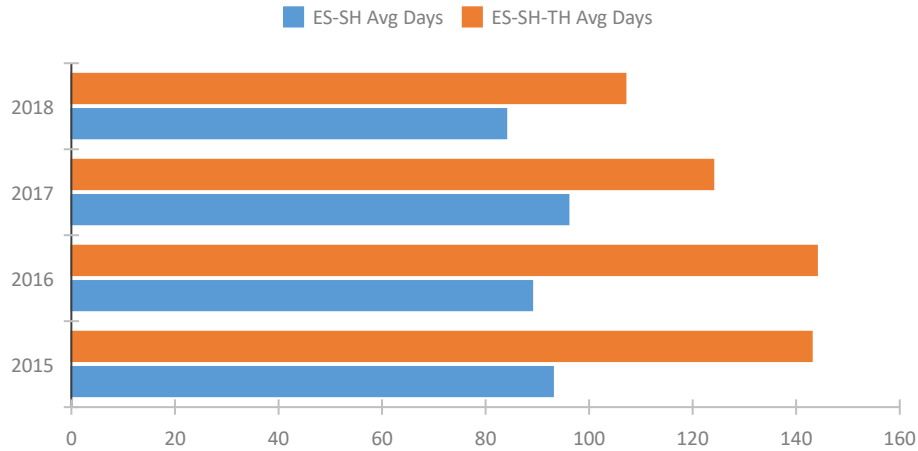


Homeless Population – Point-in-Time (PIT) Count

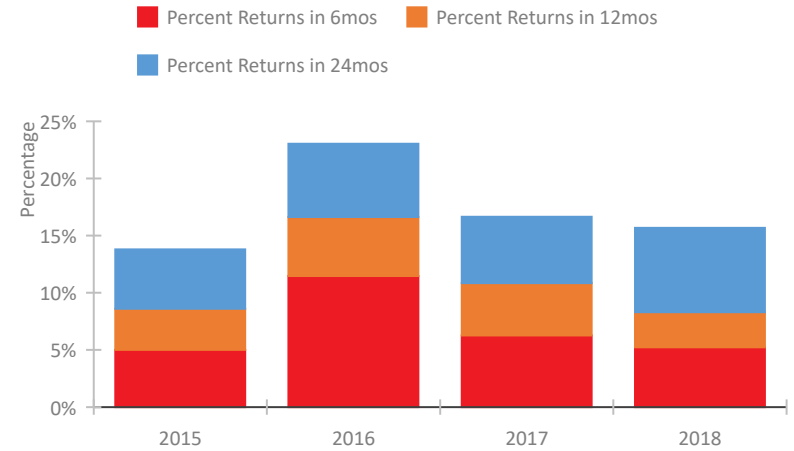


CoC Performance Profile MD-601 Montgomery County CoC

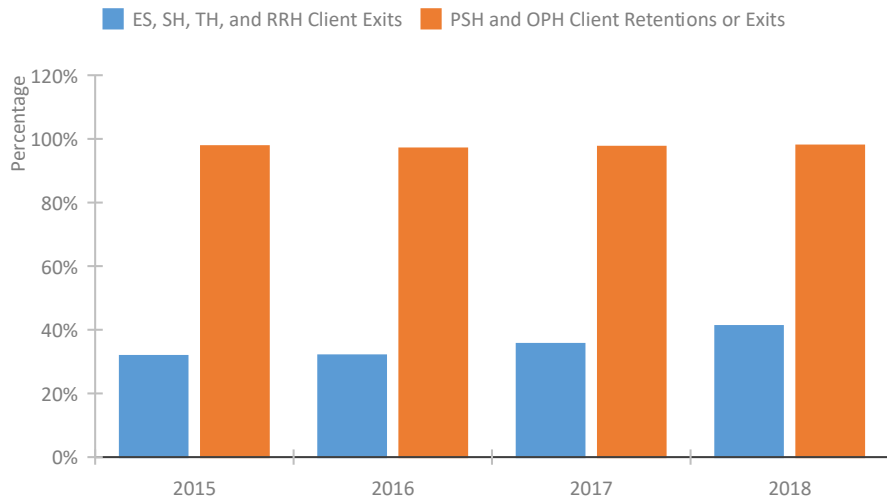
Length of Time Homeless



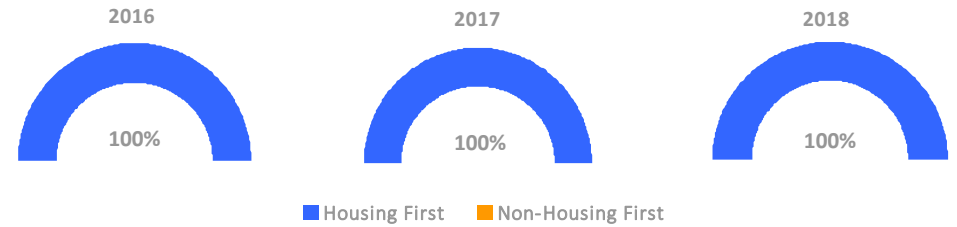
Returns to Homelessness Over Time



Exits to Permanent Housing by Program Type



Proportion of Housing First Projects by Year



Number of Projects by Year

	2016	2017	2018
Housing First Projects	15	100	15
Non-Housing First Projects	0	0	0

Data Summary: MD-601 Montgomery County CoC

Point-In-Time Count Summary

	2014	2015	2016	2017	2018	2017-18 Change	% Change
Number of Sheltered Persons in Families	288	502	358	273	272	-1	0%
Number of Unsheltered Persons in Families	0	0	0	5	0	-5	-100%
Number of Sheltered Individuals	508	495	527	490	435	-55	-11%
Number of Unsheltered Individuals	95	103	96	126	133	7	6%
Total Homeless Persons	891	1,100	981	894	840	-54	-6%
Number of Sheltered Families	91	159	109	84	85	1	1%
Number of Unsheltered Families	0	0	0	2	0	-2	-100%
Number of Total Families	91	159	109	86	85	-1	-1%
Sheltered Chronically Homeless Individuals	124	107	101	109	94	-15	-14%
Unsheltered Chronically Homeless Individuals	52	49	44	49	30	-19	-39%
Total Chronically Homeless Individuals	176	156	145	158	124	-34	-22%
Sheltered Veterans	28	20	12	11	18	7	64%
Unsheltered Veterans	7	4	5	3	0	-3	-100%
Total Veterans	35	24	17	14	18	4	29%
Sheltered Unaccompanied Youth (up to 24)	--	25	24	24	23	-1	-4%
Unsheltered Unaccompanied Youth (up to 24)	--	2	0	8	6	-2	-25%
Total Unaccompanied Youth (up to 24)	--	27	24	32	29	-3	-9%

System Performance Measures Summary

	2014	2015	2016	2017	2018	2017-18 Change	% Change
Average Length of Time Homeless (days)	N/A	143	144	124	107	-17	-13.7%
Rate People Return to Homelessness in 6 Months	N/A	5.0%	11.5%	6.3%	5.2%	-1%	N/A
Number of People who are Homeless for the First Time	N/A	1649	1669	1574	1511	-63	-4%
Rate People Exit from ES, SH, TH, and RRH to PH	N/A	31.8%	31.9%	35.6%	41.2%	5.6%	N/A
Rate People in PSH and OPH Retain or Exit to PH	N/A	97.7%	97.0%	97.5%	97.9%	0.4%	N/A

Housing Inventory Count Summary

	2014	2015	2016	2017	2018	2017-18 Change	% Change
Emergency Shelter (ES)	284	278	269	272	283	11	4%
Safe Haven (SH)	40	44	40	40	34	-6	-15%
Transitional Housing (TH)	276	297	307	198	170	-28	-14%
Permanent Supportive Housing (PSH)	1,870	1,900	1,857	1,829	2,042	213	12%
Rapid Re-Housing (RRH)	--	75	160	180	289	109	61%
Other Permanent Housing (OPH)	12	24	91	201	201	0	0%

Award Summary

	2014	2015	2016	2017	2018	2017-18 Change	% Change
Continuum of Care (CoC)	\$7,537,481	\$8,202,360	\$8,288,534	\$8,879,588	\$9,232,284	\$352,696	4%
Emergency Solutions Grants (ESG)	\$339,770	\$367,201	\$367,901	\$367,993	\$374,421	\$6,428	2%