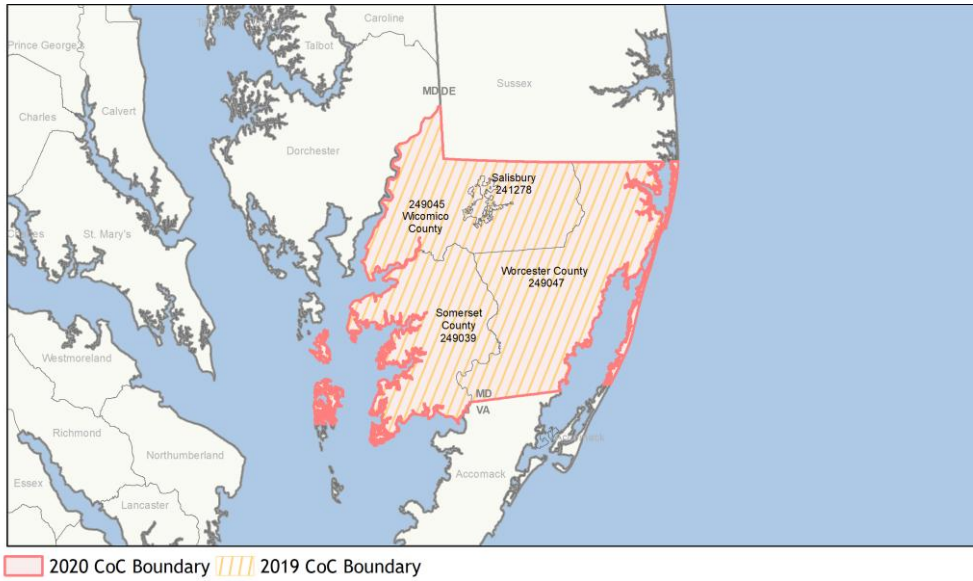
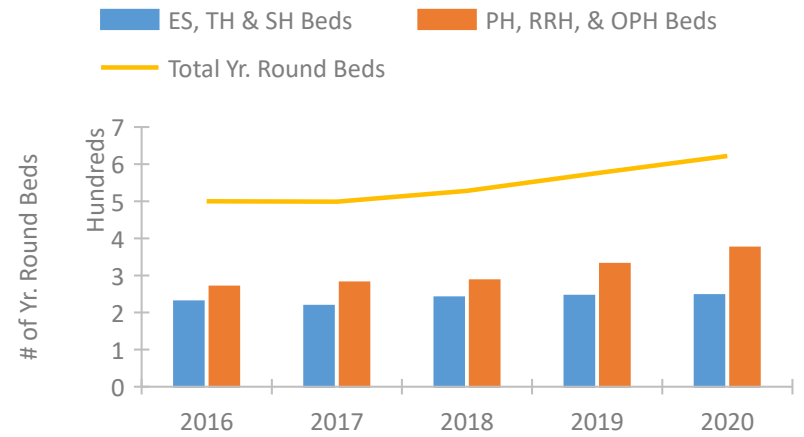


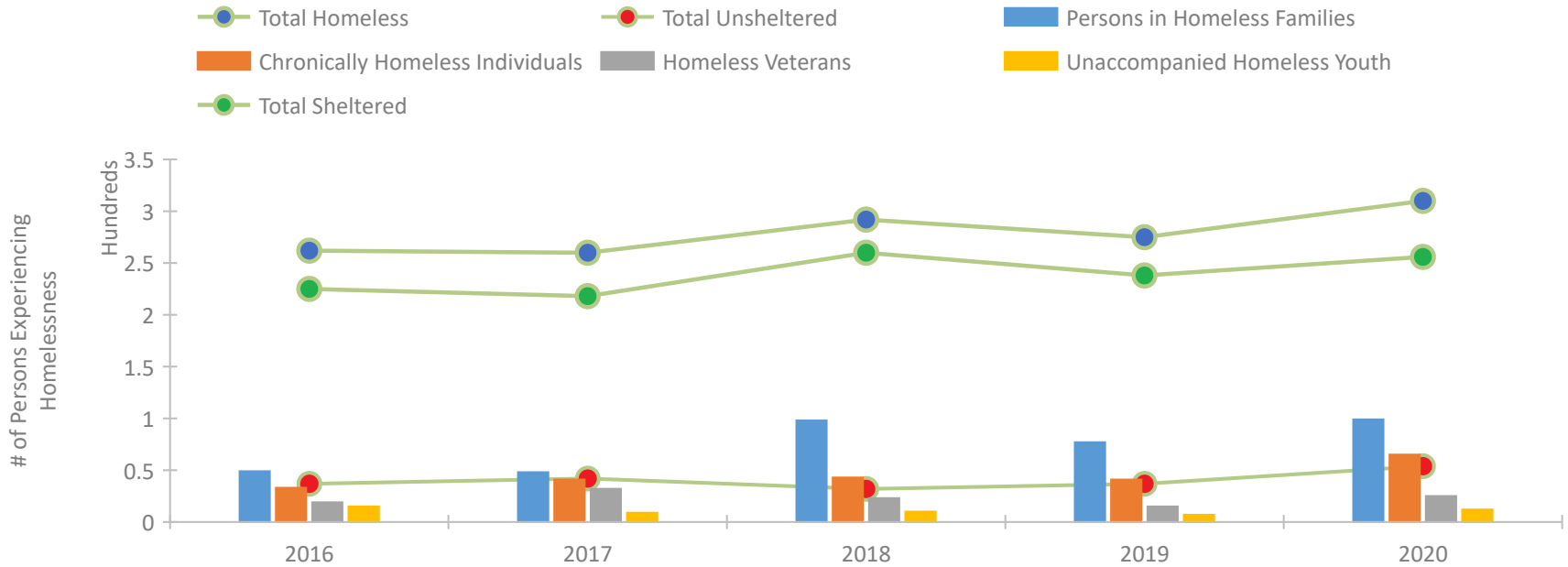
CoC Performance Profile MD-513 Wicomico, Somerset, Worcester Counties CoC



Housing Inventory Count by Program Type

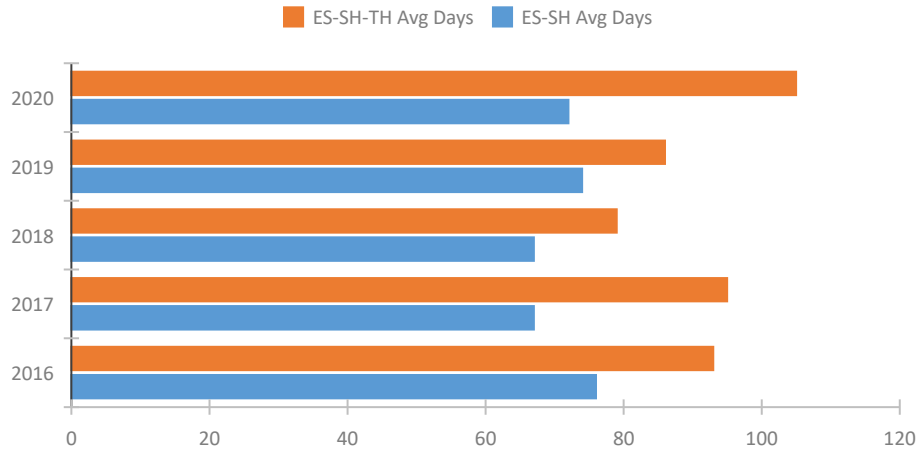


Homeless Population – Point-in-Time (PIT) Count

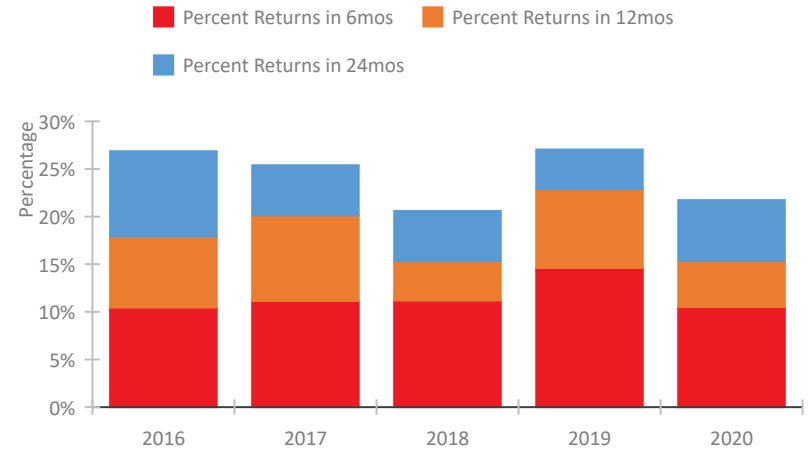


CoC Performance Profile MD-513 Wicomico, Somerset, Worcester Counties CoC

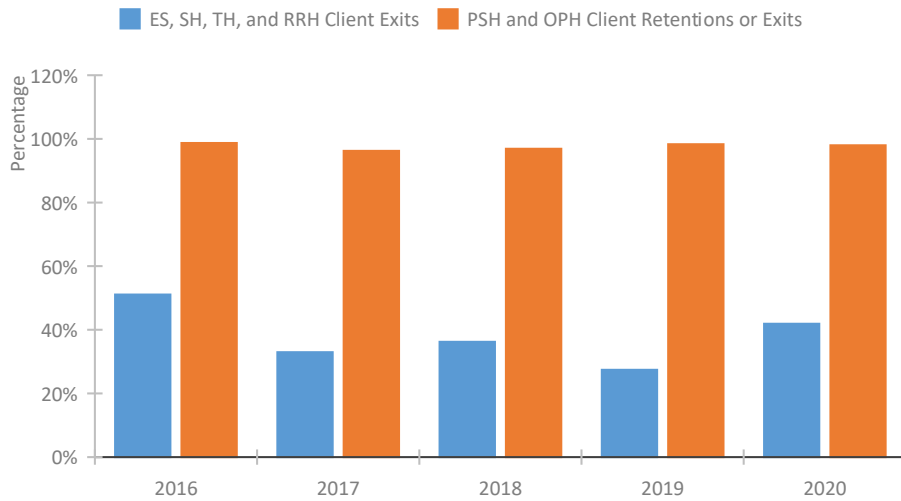
Length of Time Homeless



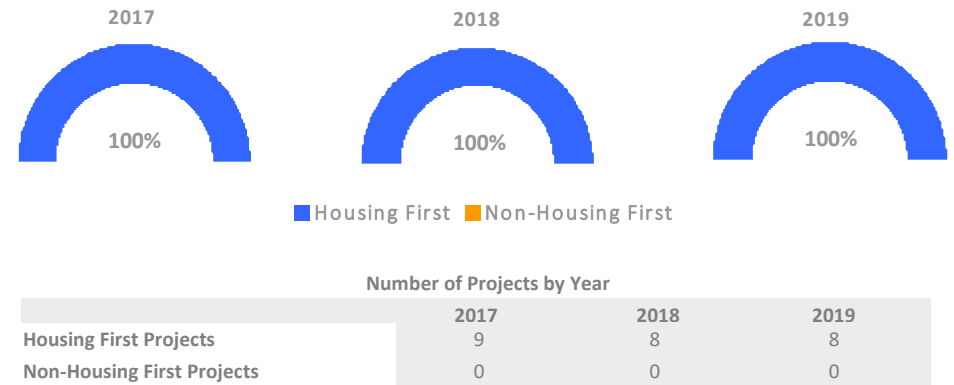
Returns to Homelessness Over Time



Exits to Permanent Housing by Program Type



Proportion of Housing First Projects by Year*



*In 2020 HUD awarded renewal projects noncompetitively, therefore no new data was collected and Housing First data remains the same from 2019 to 2020.

Data Summary: MD-513 Wicomico, Somerset, Worcester Counties CoC

Point-In-Time Count Summary

	2016	2017	2018	2019	2020	2019-20 Change	% Change
Number of Sheltered Persons in Families	47	48	93	77	99	22	29%
Number of Unsheltered Persons in Families	2	0	5	0	0	0	--
Number of Sheltered Individuals	178	170	167	161	157	-4	-2%
Number of Unsheltered Individuals	35	42	27	37	54	17	46%
Total Homeless Persons	262	260	292	275	310	35	13%
Number of Sheltered Families	18	14	31	24	30	6	25%
Number of Unsheltered Families	1	0	1	0	0	0	--
Number of Total Families	19	14	32	24	30	6	25%
Sheltered Chronically Homeless Individuals	17	31	33	34	37	3	9%
Unsheltered Chronically Homeless Individuals	16	10	10	7	28	21	300%
Total Chronically Homeless Individuals	33	41	43	41	65	24	59%
Sheltered Veterans	17	24	21	11	18	7	64%
Unsheltered Veterans	2	8	2	4	7	3	75%
Total Veterans	19	32	23	15	25	10	67%
Sheltered Unaccompanied Youth (up to 24)	13	8	10	4	10	6	150%
Unsheltered Unaccompanied Youth (up to 24)	2	1	0	3	2	-1	-33%
Total Unaccompanied Youth (up to 24)	15	9	10	7	12	5	71%

System Performance Measures Summary

	2016	2017	2018	2018	2020	2019-20 Change	% Change
Average Length of Time Homeless (days)	93	95	79	86	105	19	22.1%
Rate People Return to Homelessness in 6 Months	10.4%	11.1%	11.2%	14.6%	10.5%	-4.1%	N/A
Number of People who are Homeless for the First Time	817	891	988	755	653	-102	-13.5%
Rate People Exit from ES, SH, TH, and RRH to PH	51.1%	33.0%	36.2%	27.4%	41.9%	14.5%	N/A
Rate People in PSH and OPH Retain or Exit to PH	98.7%	96.2%	96.9%	98.3%	98.0%	-0.3%	N/A

Housing Inventory Count Summary

	2016	2017	2018	2019	2020	2019-20 Change	% Change
Emergency Shelter (ES)	184	177	198	207	208	1	0%
Transitional Housing (TH)	46	41	43	38	39	1	3%
Permanent Supportive Housing (PSH)	253	264	265	275	277	2	1%
Rapid Re-Housing (RRH)	17	17	22	56	98	42	75%

Award Summary

	2016	2017	2018	2019	2020	2019-20 Change	% Change
Continuum of Care (CoC)	\$1,231,811	\$1,249,597	\$1,319,789	\$1,413,559	\$1,323,314	(\$90,245)	-6%
ESG (MD state recipient - no direct funding)	\$1,056,568	\$1,070,371	\$1,071,832	\$1,121,541	\$1,169,121	\$47,580	4%