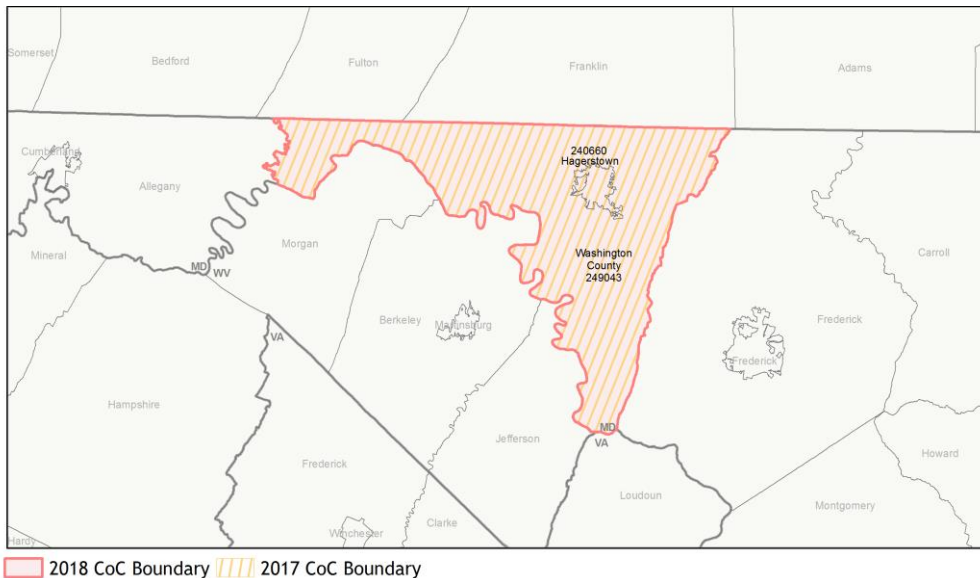
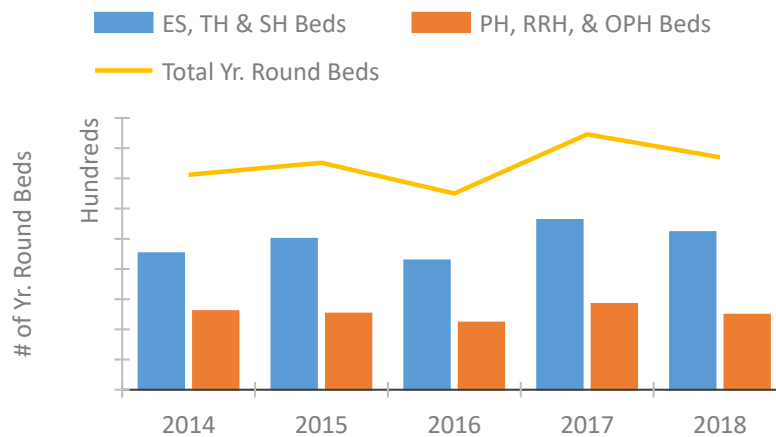


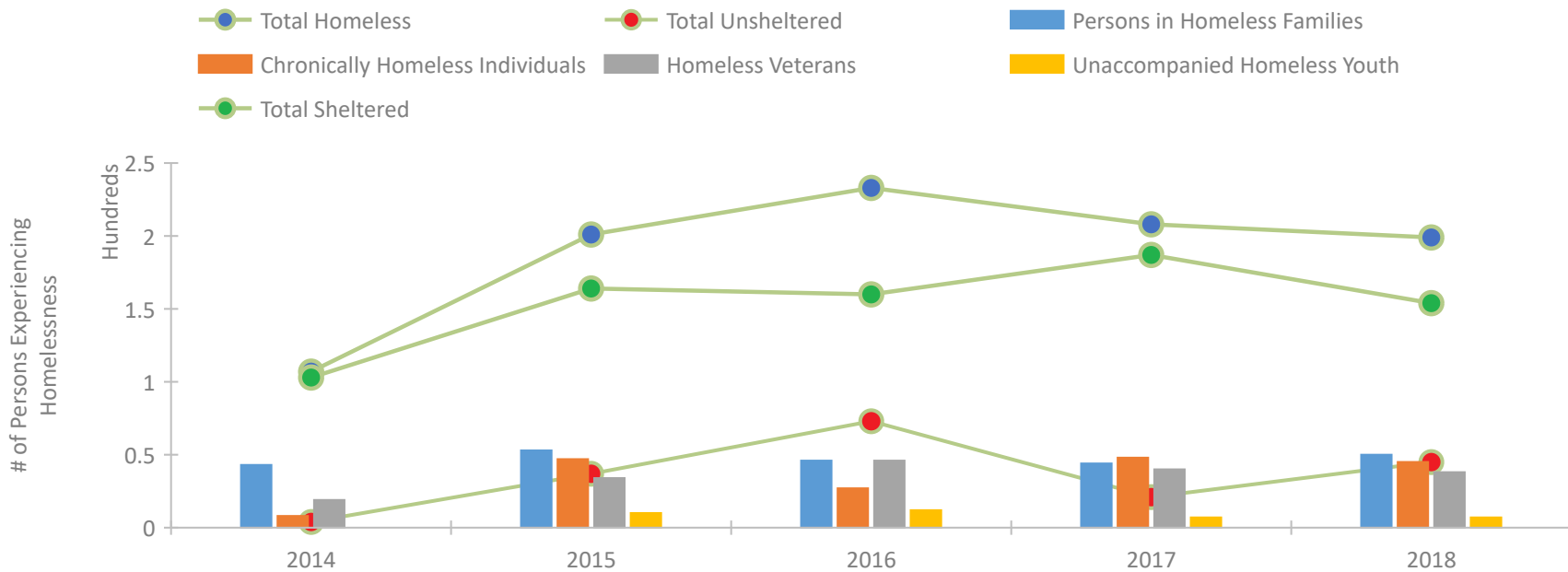
CoC Performance Profile MD-512 Hagerstown/Washington County CoC



Housing Inventory Count by Program Type

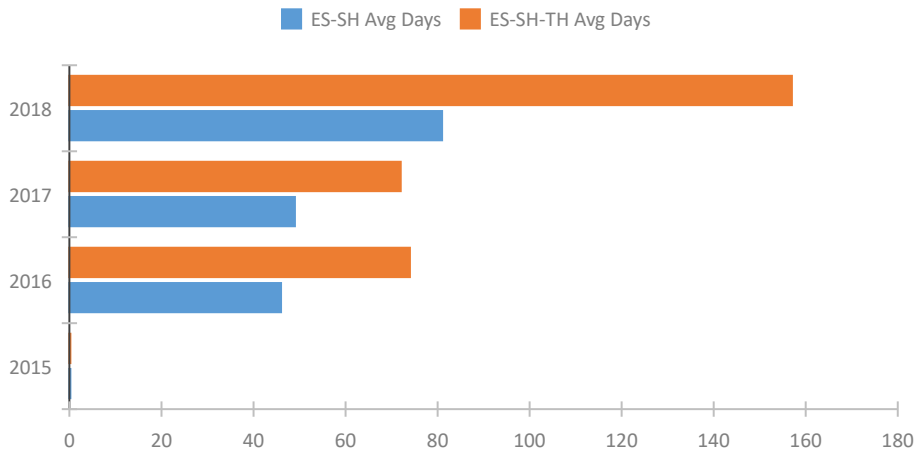


Homeless Population – Point-in-Time (PIT) Count

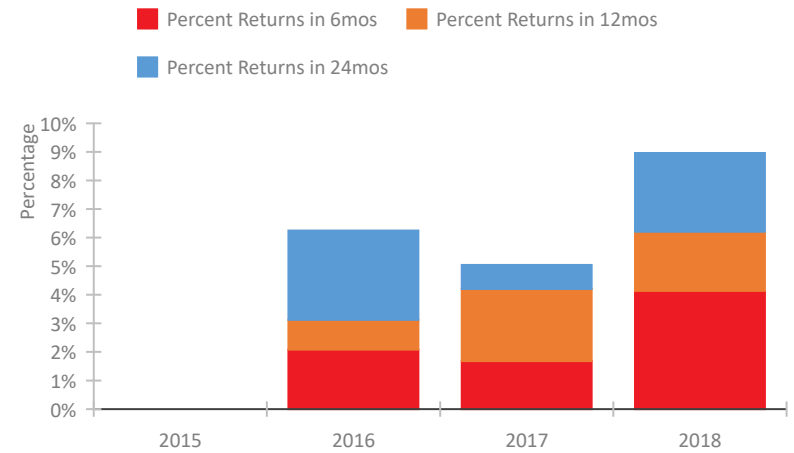


CoC Performance Profile MD-512 Hagerstown/Washington County CoC

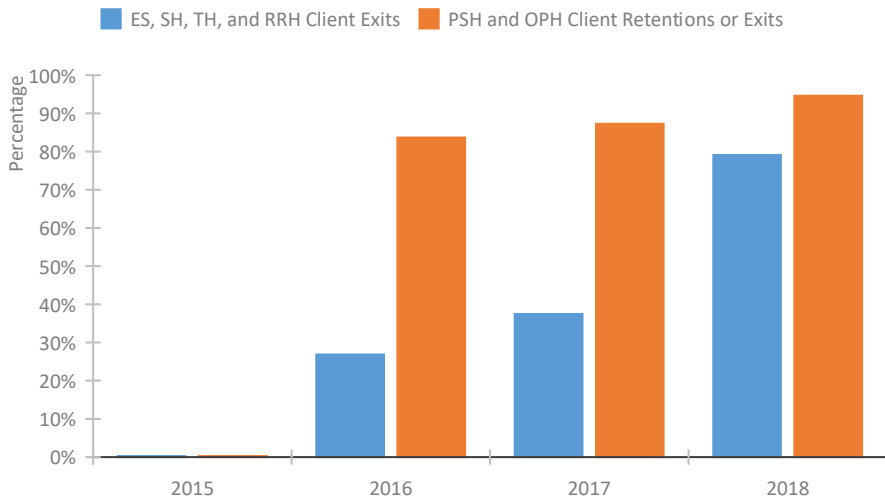
Length of Time Homeless



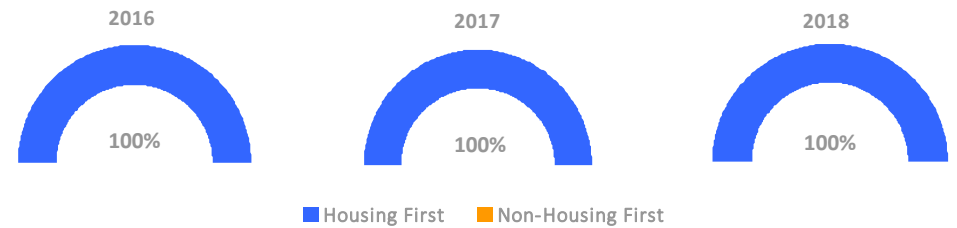
Returns to Homelessness Over Time



Exits to Permanent Housing by Program Type



Proportion of Housing First Projects by Year



Number of Projects by Year				
	2016	2017	2018	
Housing First Projects	3	3	3	
Non-Housing First Projects	0	0	0	

Data Summary: MD-512 Hagerstown/Washington County CoC

Point-In-Time Count Summary

	2014	2015	2016	2017	2018	2017-18 Change	% Change
Number of Sheltered Persons in Families	43	50	33	42	41	-1	-2%
Number of Unsheltered Persons in Families	0	3	13	2	9	7	350%
Number of Sheltered Individuals	60	114	127	145	113	-32	-22%
Number of Unsheltered Individuals	4	34	60	19	36	17	89%
Total Homeless Persons	107	201	233	208	199	-9	-4%
Number of Sheltered Families	14	16	12	14	14	0	0%
Number of Unsheltered Families	0	1	5	1	3	2	200%
Number of Total Families	14	17	17	15	17	2	13%
Sheltered Chronically Homeless Individuals	5	31	15	38	22	-16	-42%
Unsheltered Chronically Homeless Individuals	3	16	12	10	23	13	130%
Total Chronically Homeless Individuals	8	47	27	48	45	-3	-6%
Sheltered Veterans	19	32	37	35	36	1	3%
Unsheltered Veterans	0	2	9	5	2	-3	-60%
Total Veterans	19	34	46	40	38	-2	-5%
Sheltered Unaccompanied Youth (up to 24)	--	8	8	6	3	-3	-50%
Unsheltered Unaccompanied Youth (up to 24)	--	2	4	1	4	3	300%
Total Unaccompanied Youth (up to 24)	--	10	12	7	7	0	0%

System Performance Measures Summary

	2014	2015	2016	2017	2018	2017-18 Change	% Change
Average Length of Time Homeless (days)	N/A	0	74	72	157	85	118.1%
Rate People Return to Homelessness in 6 Months	N/A	--	2.1%	1.7%	4.1%	2.5%	N/A
Number of People who are Homeless for the First Time	N/A	0	461	400	293	-107	-26.8%
Rate People Exit from ES, SH, TH, and RRH to PH	N/A	--	26.9%	37.5%	79.1%	41.6%	N/A
Rate People in PSH and OPH Retain or Exit to PH	N/A	--	83.7%	87.3%	94.6%	7.3%	N/A

Housing Inventory Count Summary

	2014	2015	2016	2017	2018	2017-18 Change	% Change
Emergency Shelter (ES)	152	163	159	213	213	0	0%
Transitional Housing (TH)	74	87	55	68	48	-20	-29%
Permanent Supportive Housing (PSH)	130	126	111	103	100	-3	-3%
Rapid Re-Housing (RRH)	--	--	--	39	24	-15	-38%

Award Summary

	2014	2015	2016	2017	2018	2017-18 Change	% Change
Continuum of Care (CoC)	\$548,266	\$503,819	\$501,992	\$494,672	\$517,913	\$23,241	5%
ESG (MD state recipient - no direct funding)	\$953,756	\$1,053,270	\$1,056,568	\$1,070,371	\$1,071,832	\$1,461	0%