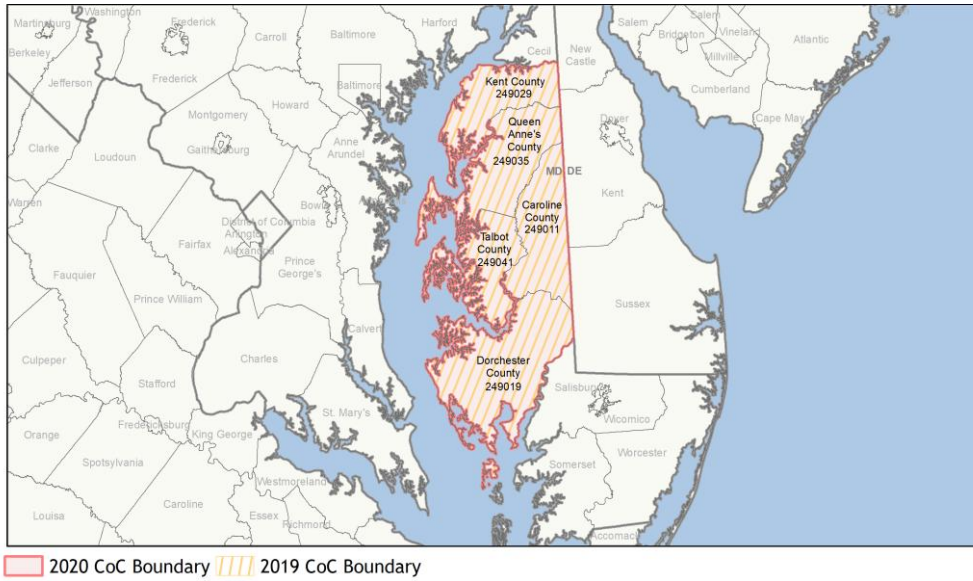
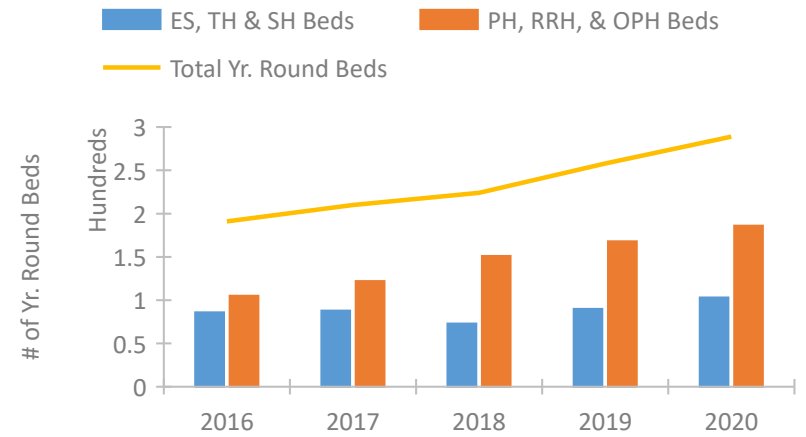


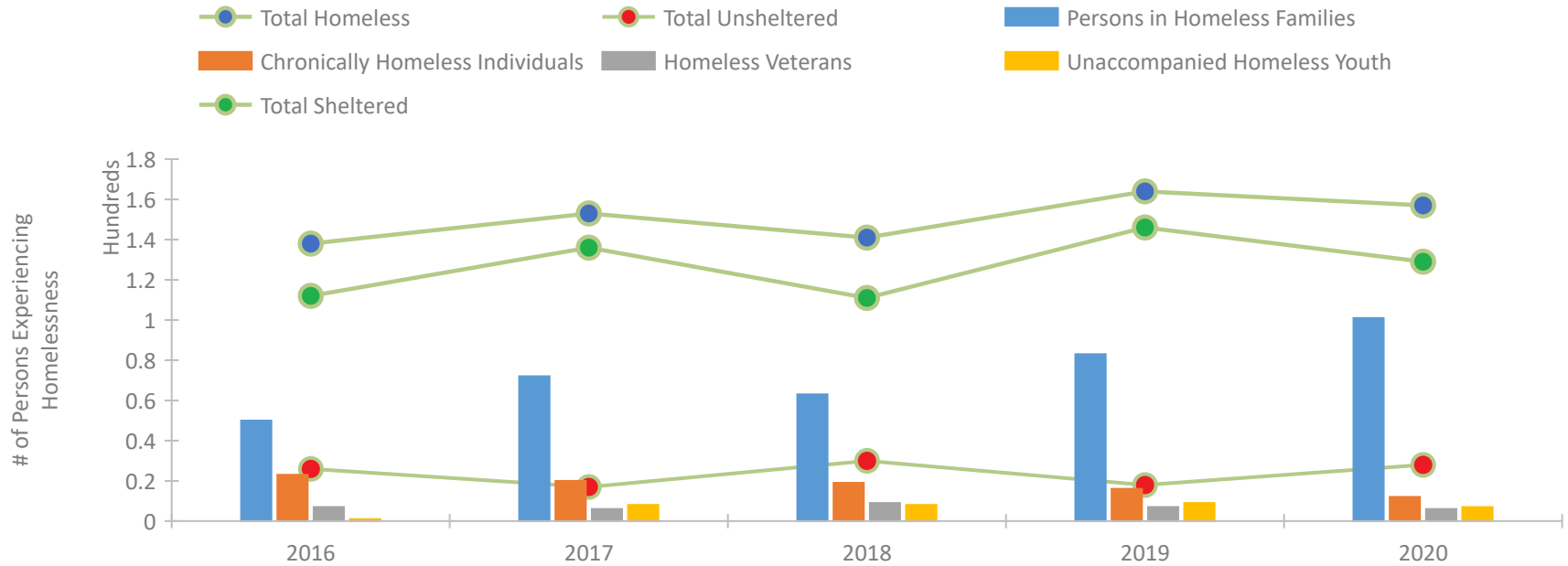
## CoC Performance Profile MD-511 Mid-Shore Regional CoC



### Housing Inventory Count by Program Type

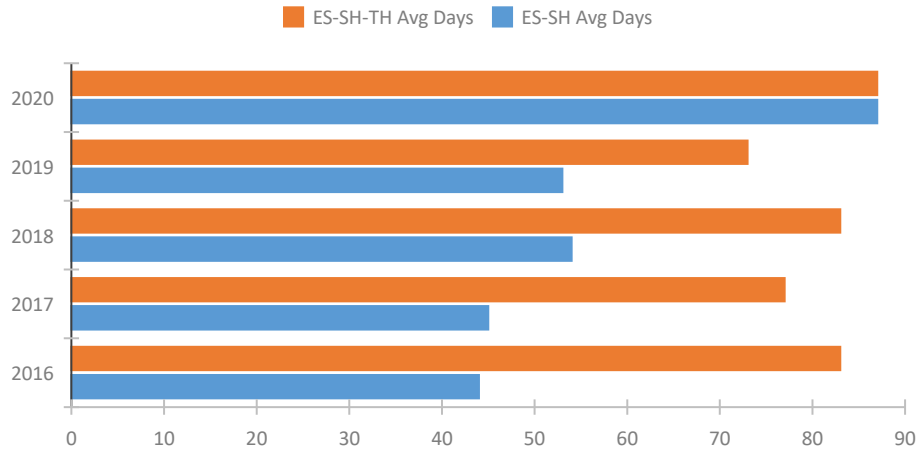


### Homeless Population – Point-in-Time (PIT) Count

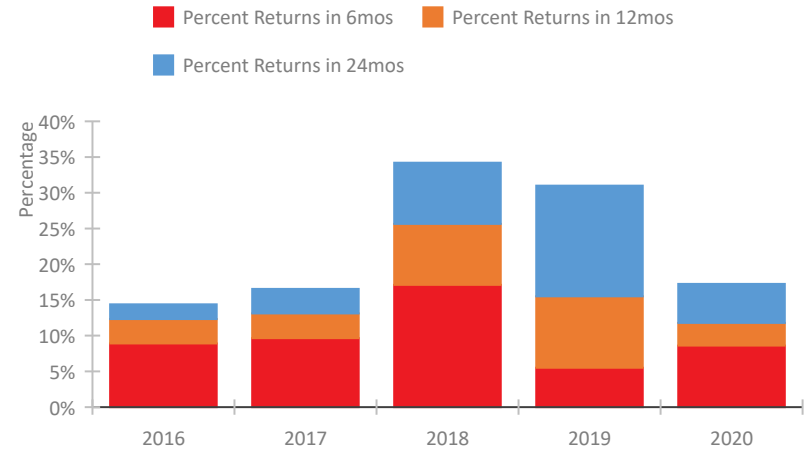


## CoC Performance Profile MD-511 Mid-Shore Regional CoC

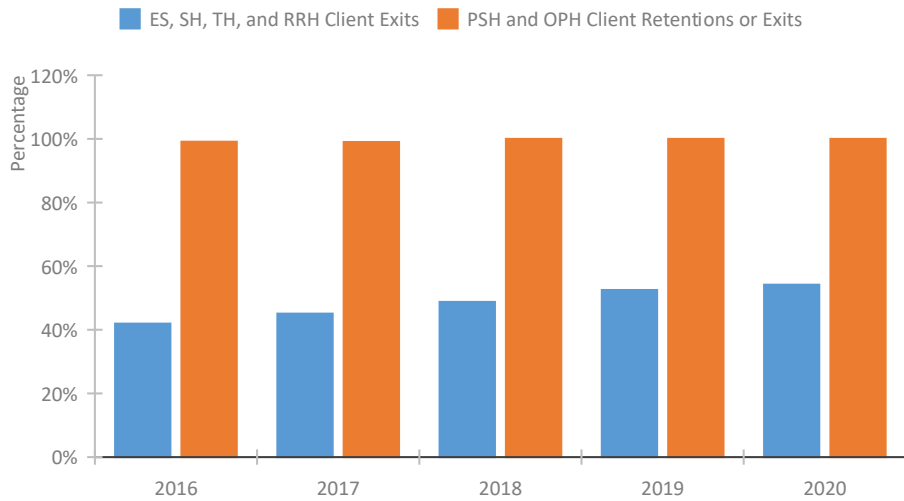
### Length of Time Homeless



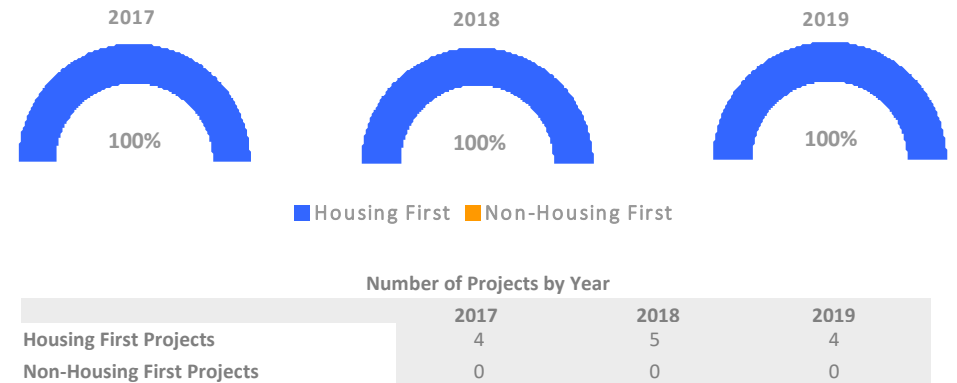
### Returns to Homelessness Over Time



### Exits to Permanent Housing by Program Type



### Proportion of Housing First Projects by Year\*



\*In 2020 HUD awarded renewal projects noncompetitively, therefore no new data was collected and Housing First data remains the same from 2019 to 2020.

## Data Summary: MD-511 Mid-Shore Regional CoC

### Point-In-Time Count Summary

	2016	2017	2018	2019	2020	2019-20 Change	% Change
Number of Sheltered Persons in Families	44	66	50	83	84	1	1%
Number of Unsheltered Persons in Families	6	6	13	0	17	17	100%
Number of Sheltered Individuals	68	70	61	63	45	-18	-29%
Number of Unsheltered Individuals	20	11	17	18	11	-7	-39%
<b>Total Homeless Persons</b>	<b>138</b>	<b>153</b>	<b>141</b>	<b>164</b>	<b>157</b>	<b>-7</b>	<b>-4%</b>
Number of Sheltered Families	11	18	16	26	25	-1	-4%
Number of Unsheltered Families	2	2	4	0	5	5	100%
<b>Number of Total Families</b>	<b>13</b>	<b>20</b>	<b>20</b>	<b>26</b>	<b>30</b>	<b>4</b>	<b>15%</b>
Sheltered Chronically Homeless Individuals	18	13	10	13	9	-4	-31%
Unsheltered Chronically Homeless Individuals	5	7	9	3	3	0	-0%
<b>Total Chronically Homeless Individuals</b>	<b>23</b>	<b>20</b>	<b>19</b>	<b>16</b>	<b>12</b>	<b>-4</b>	<b>-25%</b>
Sheltered Veterans	4	5	8	5	3	-2	-40%
Unsheltered Veterans	3	1	1	2	3	1	50%
<b>Total Veterans</b>	<b>7</b>	<b>6</b>	<b>9</b>	<b>7</b>	<b>6</b>	<b>-1</b>	<b>-14%</b>
Sheltered Unaccompanied Youth (up to 24)	1	7	7	9	3	-6	-67%
Unsheltered Unaccompanied Youth (up to 24)	0	1	1	0	4	4	100%
<b>Total Unaccompanied Youth (up to 24)</b>	<b>1</b>	<b>8</b>	<b>8</b>	<b>9</b>	<b>7</b>	<b>-2</b>	<b>-22%</b>

### System Performance Measures Summary

	2016	2017	2018	2018	2020	2019-20 Change	% Change
Average Length of Time Homeless (days)	83	77	83	73	87	14	19.2%
Rate People Return to Homelessness in 6 Months	8.9%	9.7%	17.1%	5.5%	8.6%	3.1%	N/A
Number of People who are Homeless for the First Time	331	368	407	515	369	-146	-28.3%
Rate People Exit from ES, SH, TH, and RRH to PH	41.9%	45.1%	48.8%	52.5%	54.2%	1.7%	N/A
Rate People in PSH and OPH Retain or Exit to PH	99.1%	99.0%	100.0%	100.0%	100.0%	-0%	N/A

### Housing Inventory Count Summary

	2016	2017	2018	2019	2020	2019-20 Change	% Change
Emergency Shelter (ES)	43	43	40	65	80	15	23%
Transitional Housing (TH)	43	45	33	25	23	-2	-8%
Permanent Supportive Housing (PSH)	105	121	102	102	100	-2	-2%
Rapid Re-Housing (RRH)	--	1	49	66	86	20	30%

### Award Summary

	2016	2017	2018	2019	2020	2019-20 Change	% Change
<b>Continuum of Care (CoC)</b>	\$687,157	\$762,931	\$746,719	\$757,156	\$745,774	(\$11,382)	-2%
<b>ESG (MD state recipient - no direct funding)</b>	\$1,056,568	\$1,070,371	\$1,071,832	\$1,121,541	\$1,169,121	\$47,580	4%