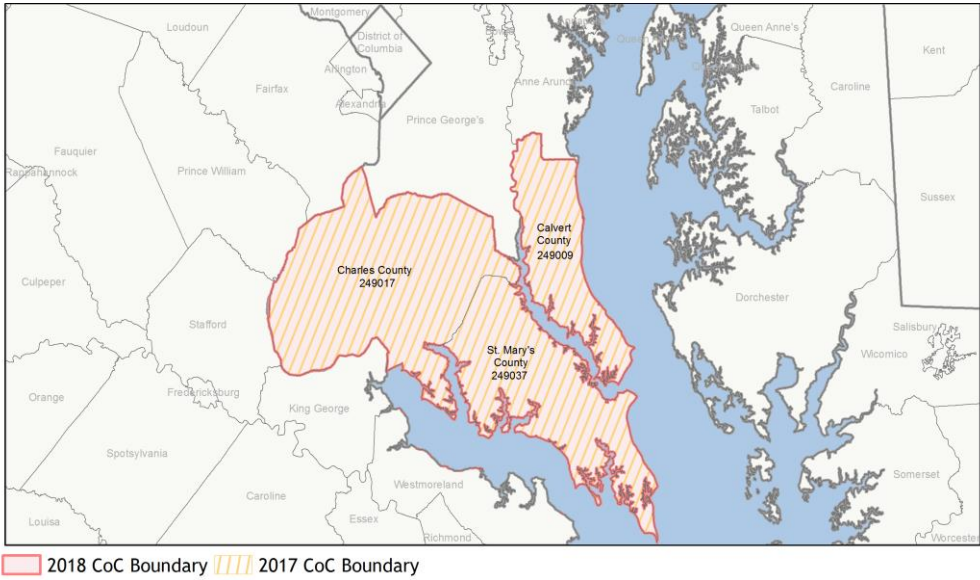
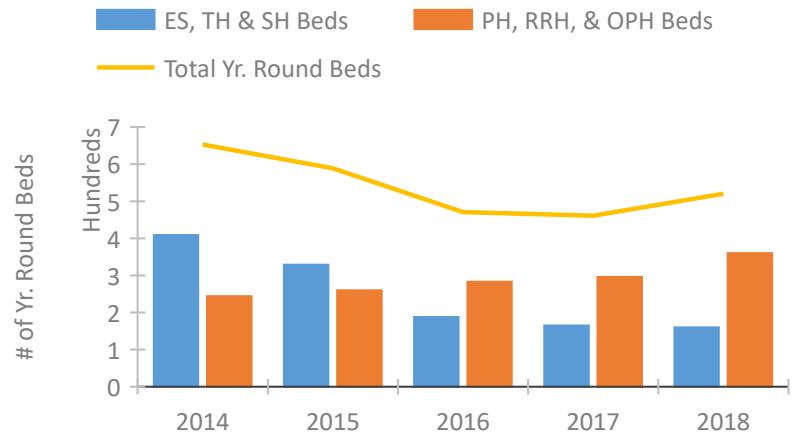


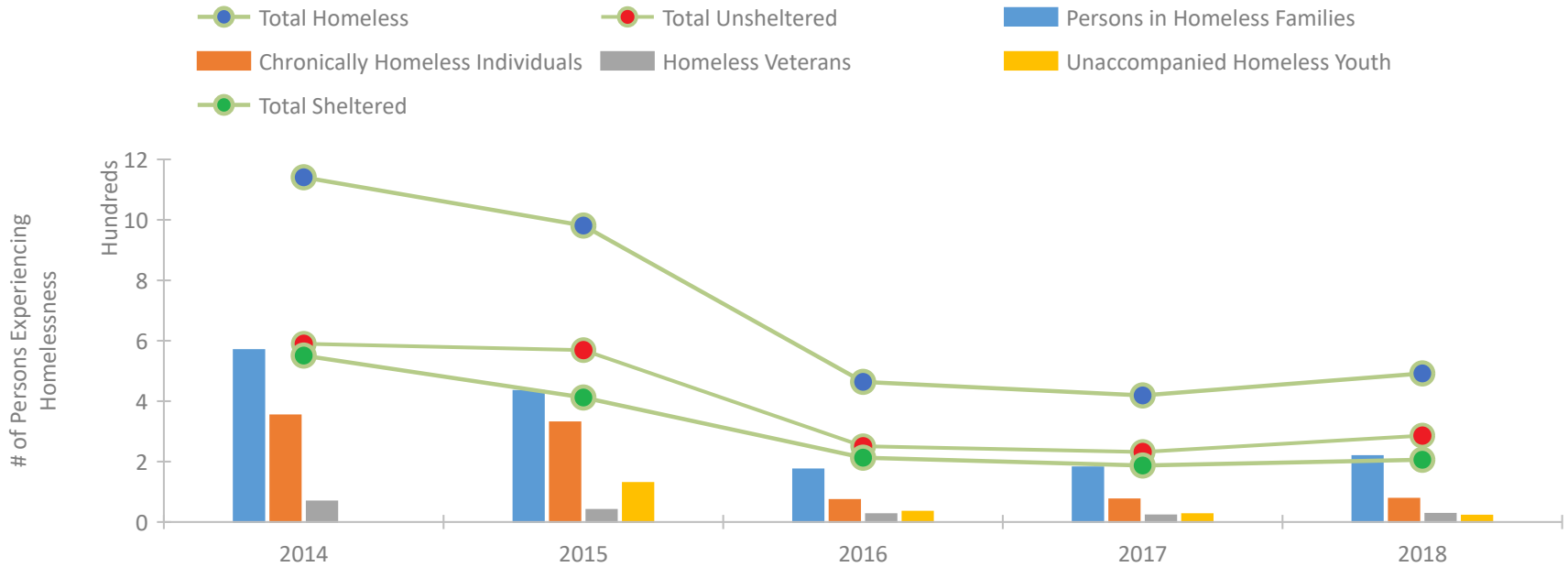
CoC Performance Profile MD-508 Charles, Calvert, St. Mary's Counties CoC



Housing Inventory Count by Program Type

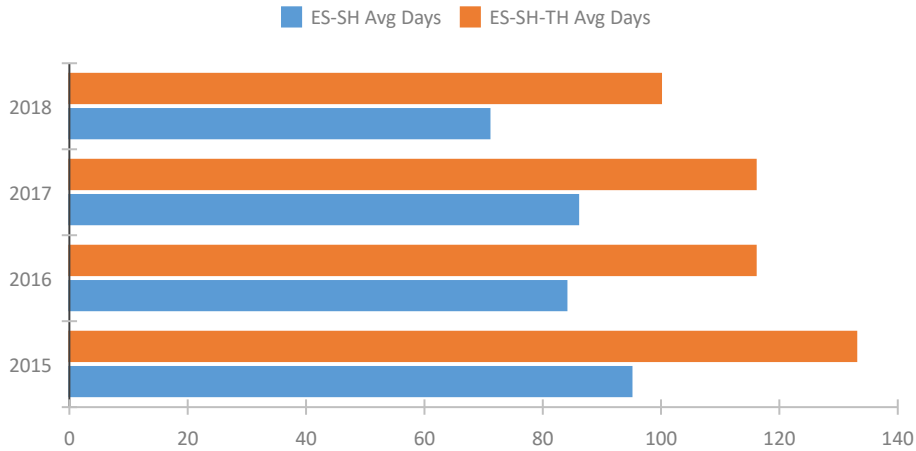


Homeless Population – Point-in-Time (PIT) Count

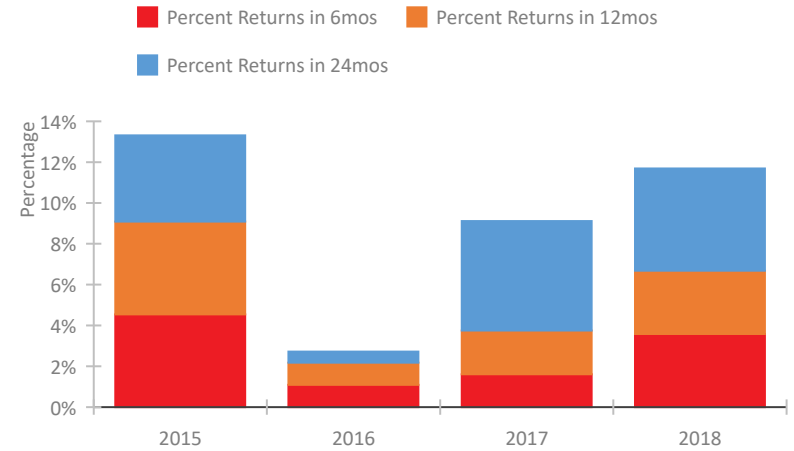


CoC Performance Profile MD-508 Charles, Calvert, St. Mary's Counties CoC

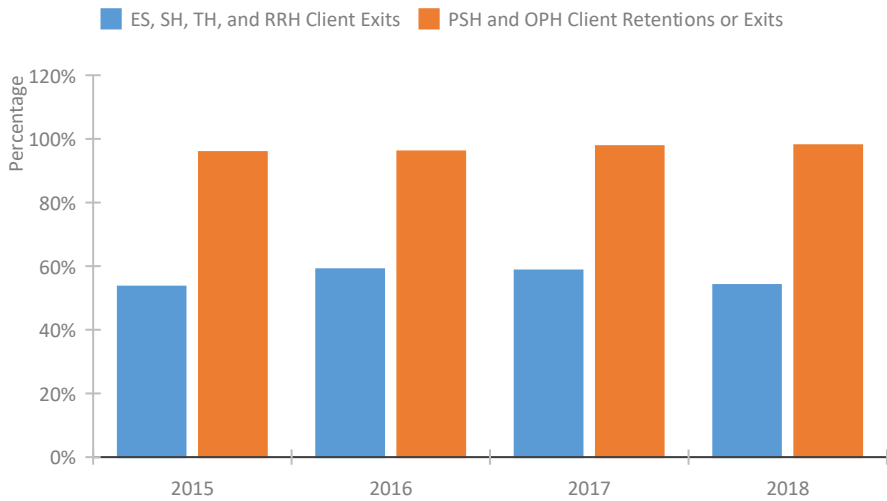
Length of Time Homeless



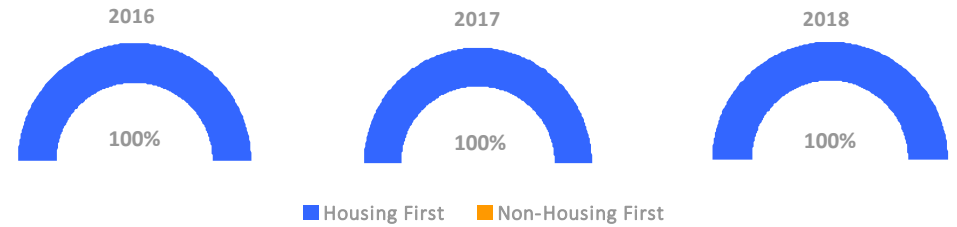
Returns to Homelessness Over Time



Exits to Permanent Housing by Program Type



Proportion of Housing First Projects by Year



Number of Projects by Year

	2016	2017	2018
Housing First Projects	17	19	19
Non-Housing First Projects	0	0	0

Data Summary: MD-508 Charles, Calvert, St. Mary's Counties CoC

Point-In-Time Count Summary

	2014	2015	2016	2017	2018	2017-18 Change	% Change
Number of Sheltered Persons in Families	245	169	65	57	82	25	44%
Number of Unsheltered Persons in Families	324	265	109	124	136	12	10%
Number of Sheltered Individuals	306	243	148	130	124	-6	-5%
Number of Unsheltered Individuals	266	304	142	108	150	42	39%
Total Homeless Persons	1,141	981	464	419	492	73	17%
Number of Sheltered Families	75	49	23	17	29	12	71%
Number of Unsheltered Families	96	92	29	32	32	0	0%
Number of Total Families	171	141	52	49	61	12	24%
Sheltered Chronically Homeless Individuals	167	130	39	35	18	-17	-49%
Unsheltered Chronically Homeless Individuals	186	200	34	40	59	19	48%
Total Chronically Homeless Individuals	353	330	73	75	77	2	3%
Sheltered Veterans	33	19	9	5	8	3	60%
Unsheltered Veterans	35	21	17	17	19	2	12%
Total Veterans	68	40	26	22	27	5	23%
Sheltered Unaccompanied Youth (up to 24)	--	46	12	9	11	2	22%
Unsheltered Unaccompanied Youth (up to 24)	--	83	22	17	10	-7	-41%
Total Unaccompanied Youth (up to 24)	--	129	34	26	21	-5	-19%

System Performance Measures Summary

	2014	2015	2016	2017	2018	2017-18 Change	% Change
Average Length of Time Homeless (days)	N/A	133	116	116	100	-16	-13.8%
Rate People Return to Homelessness in 6 Months	N/A	4.5%	1.1%	1.6%	3.6%	2%	N/A
Number of People who are Homeless for the First Time	N/A	600	604	797	776	-21	-2.6%
Rate People Exit from ES, SH, TH, and RRH to PH	N/A	53.5%	59.0%	58.6%	54.1%	-4.6%	N/A
Rate People in PSH and OPH Retain or Exit to PH	N/A	95.9%	96.0%	97.7%	98.0%	0.3%	N/A

Housing Inventory Count Summary

	2014	2015	2016	2017	2018	2017-18 Change	% Change
Emergency Shelter (ES)	248	236	143	119	114	-5	-4%
Transitional Housing (TH)	161	93	45	46	46	0	0%
Permanent Supportive Housing (PSH)	240	252	274	273	286	13	5%
Rapid Re-Housing (RRH)	4	6	6	22	74	52	236%

Award Summary

	2014	2015	2016	2017	2018	2017-18 Change	% Change
Continuum of Care (CoC)	\$2,334,584	\$2,521,547	\$2,648,561	\$2,827,653	\$2,923,962	\$96,309	3%
ESG (MD state recipient - no direct funding)	\$953,756	\$1,053,270	\$1,056,568	\$1,070,371	\$1,071,832	\$1,461	0%