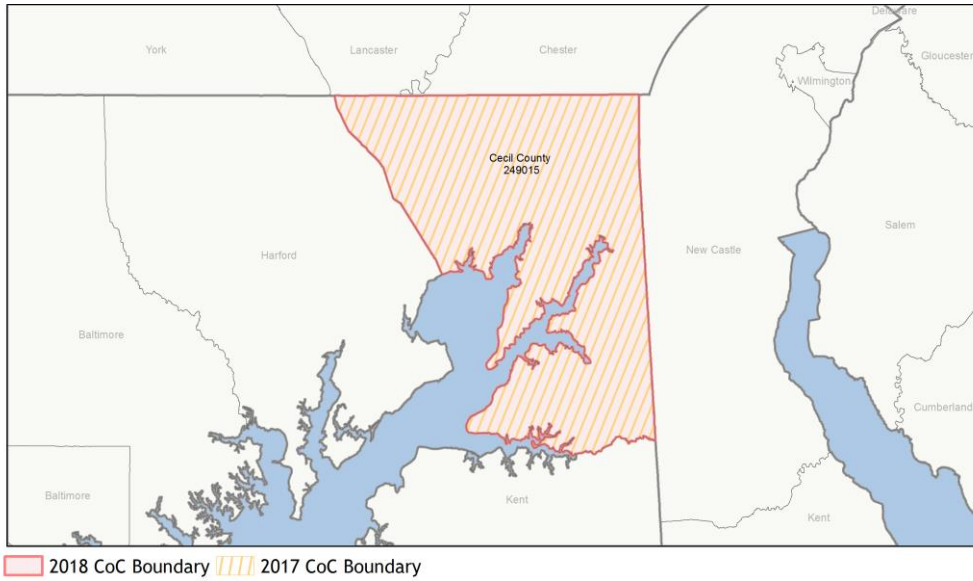
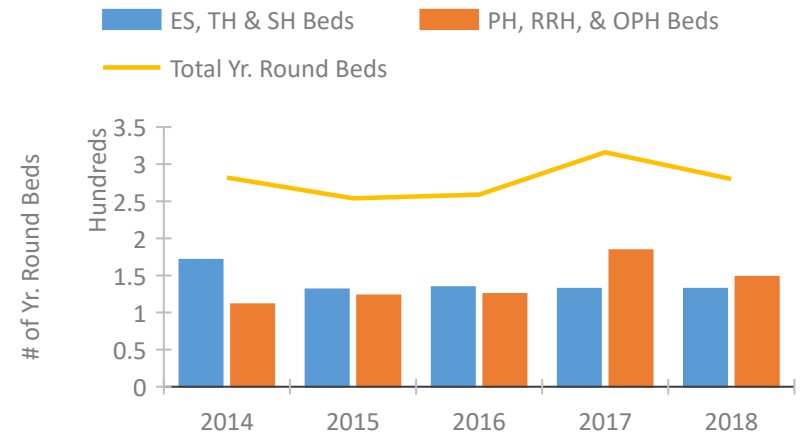


CoC Performance Profile MD-507

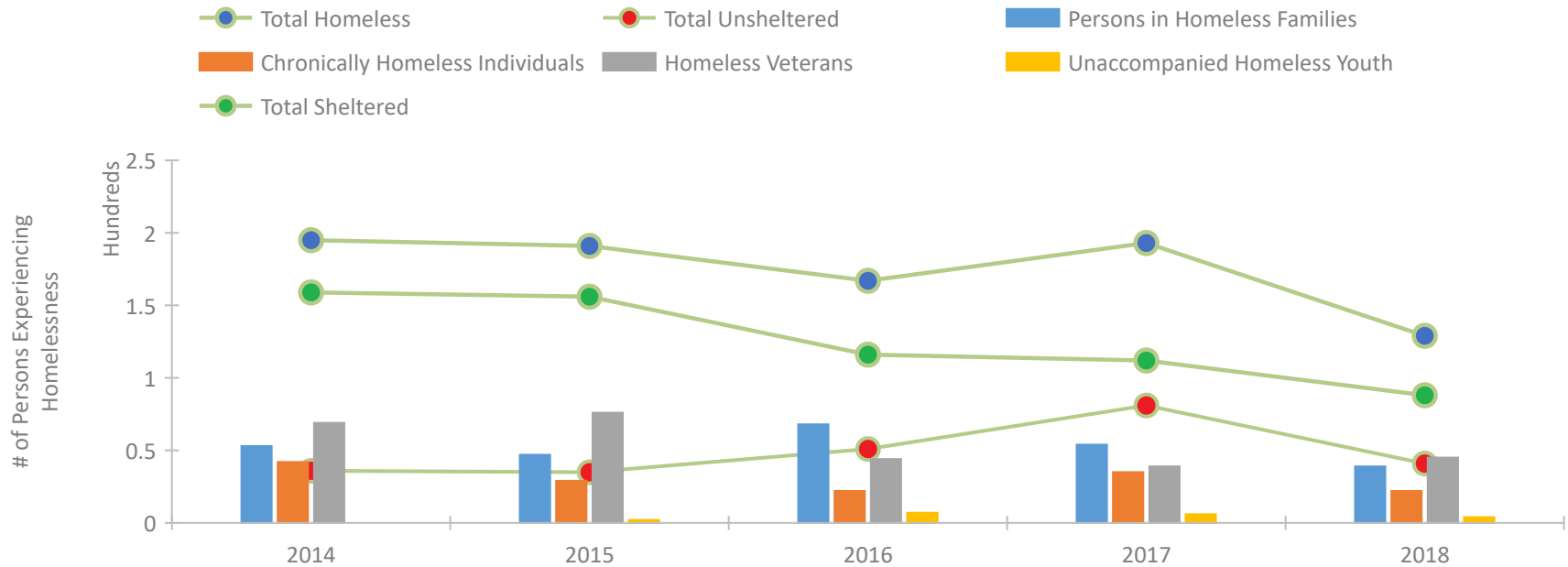
Cecil County CoC



Housing Inventory Count by Program Type

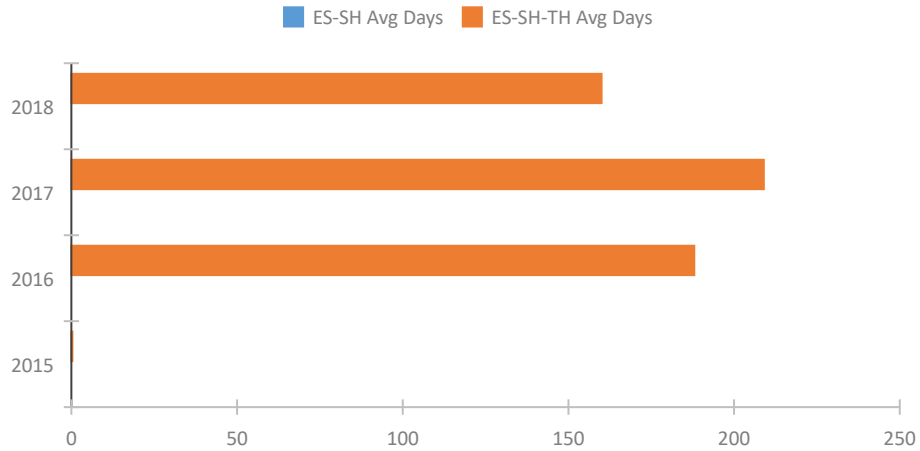


Homeless Population – Point-in-Time (PIT) Count

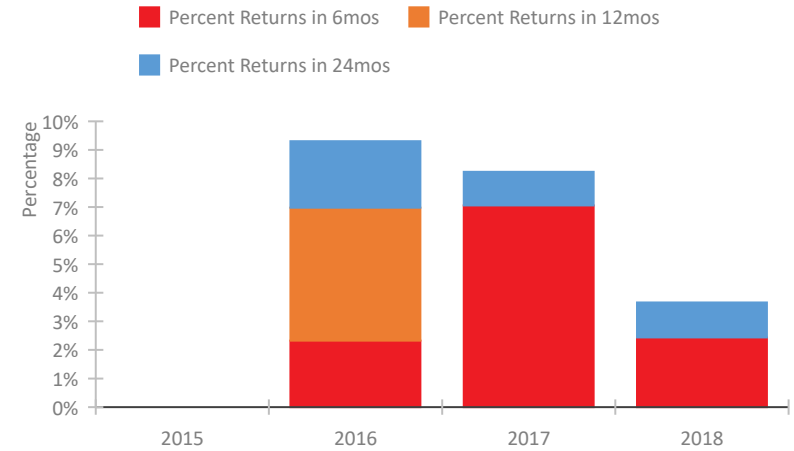


CoC Performance Profile MD-507 Cecil County CoC

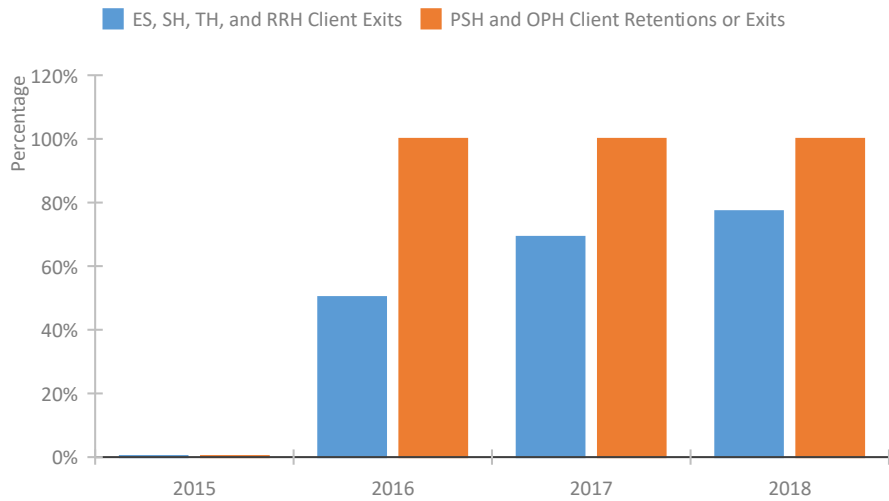
Length of Time Homeless



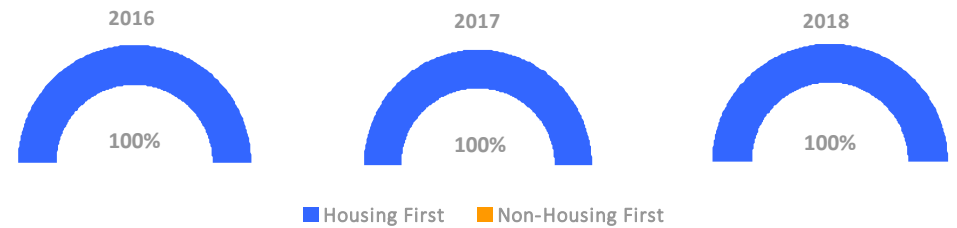
Returns to Homelessness Over Time



Exits to Permanent Housing by Program Type



Proportion of Housing First Projects by Year



Number of Projects by Year

	2016	2017	2018
Housing First Projects	3	3	3
Non-Housing First Projects	0	0	0

Data Summary: MD-507 Cecil County CoC

Point-In-Time Count Summary

	2014	2015	2016	2017	2018	2017-18 Change	% Change
Number of Sheltered Persons in Families	53	42	62	52	39	-13	-25%
Number of Unsheltered Persons in Families	0	5	6	2	0	-2	-100%
Number of Sheltered Individuals	106	114	54	60	49	-11	-18%
Number of Unsheltered Individuals	36	30	45	79	41	-38	-48%
Total Homeless Persons	195	191	167	193	129	-64	-33%
Number of Sheltered Families	17	15	22	17	11	-6	-35%
Number of Unsheltered Families	0	2	2	1	0	-1	-100%
Number of Total Families	17	17	24	18	11	-7	-39%
Sheltered Chronically Homeless Individuals	20	14	2	8	0	-8	-100%
Unsheltered Chronically Homeless Individuals	22	15	20	27	22	-5	-19%
Total Chronically Homeless Individuals	42	29	22	35	22	-13	-37%
Sheltered Veterans	65	74	37	36	37	1	3%
Unsheltered Veterans	4	2	7	3	8	5	167%
Total Veterans	69	76	44	39	45	6	15%
Sheltered Unaccompanied Youth (up to 24)	--	1	0	3	0	-3	-100%
Unsheltered Unaccompanied Youth (up to 24)	--	1	7	3	4	1	33%
Total Unaccompanied Youth (up to 24)	--	2	7	6	4	-2	-33%

System Performance Measures Summary

	2014	2015	2016	2017	2018	2017-18 Change	% Change
Average Length of Time Homeless (days)	N/A	0	188	209	160	-49	-23.4%
Rate People Return to Homelessness in 6 Months	N/A	--	2.3%	7.1%	2.4%	-4.6%	N/A
Number of People who are Homeless for the First Time	N/A	0	176	139	208	69	49.6%
Rate People Exit from ES, SH, TH, and RRH to PH	N/A	--	50.3%	69.2%	77.3%	8.1%	N/A
Rate People in PSH and OPH Retain or Exit to PH	N/A	--	100.0%	100.0%	100.0%	0%	N/A

Housing Inventory Count Summary

	2014	2015	2016	2017	2018	2017-18 Change	% Change
Emergency Shelter (ES)	52	42	22	22	22	0	0%
Transitional Housing (TH)	119	89	112	110	110	0	0%
Permanent Supportive Housing (PSH)	111	113	119	122	122	0	0%
Rapid Re-Housing (RRH)	--	10	6	62	26	-36	-58%

Award Summary

	2014	2015	2016	2017	2018	2017-18 Change	% Change
Continuum of Care (CoC)	\$261,510	\$244,476	\$244,476	\$252,206	\$255,444	\$3,238	1%
ESG (MD state recipient - no direct funding)	\$953,756	\$1,053,270	\$1,056,568	\$1,070,371	\$1,071,832	\$1,461	0%