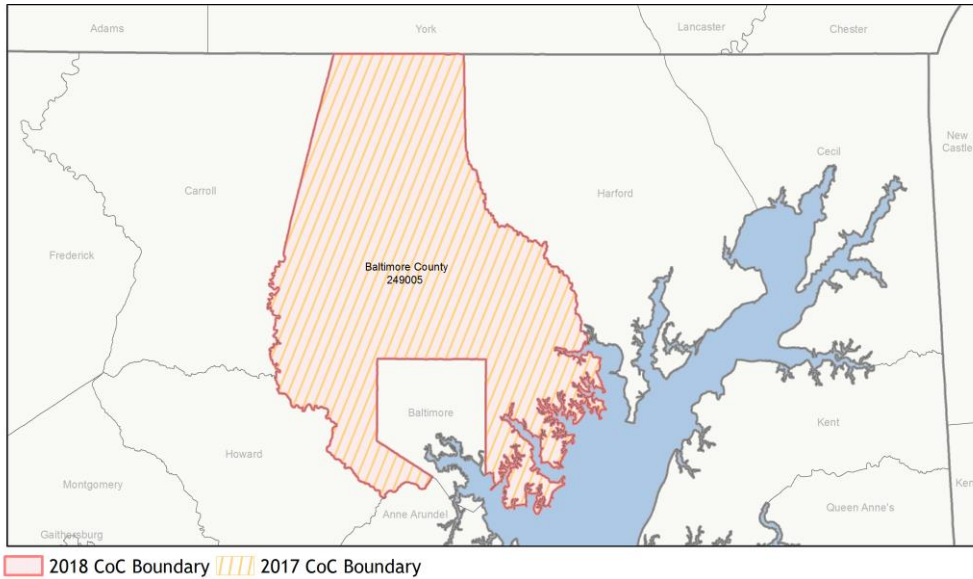
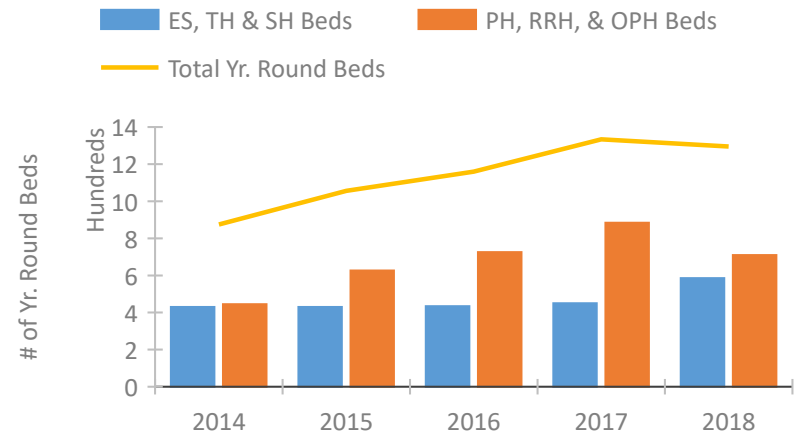


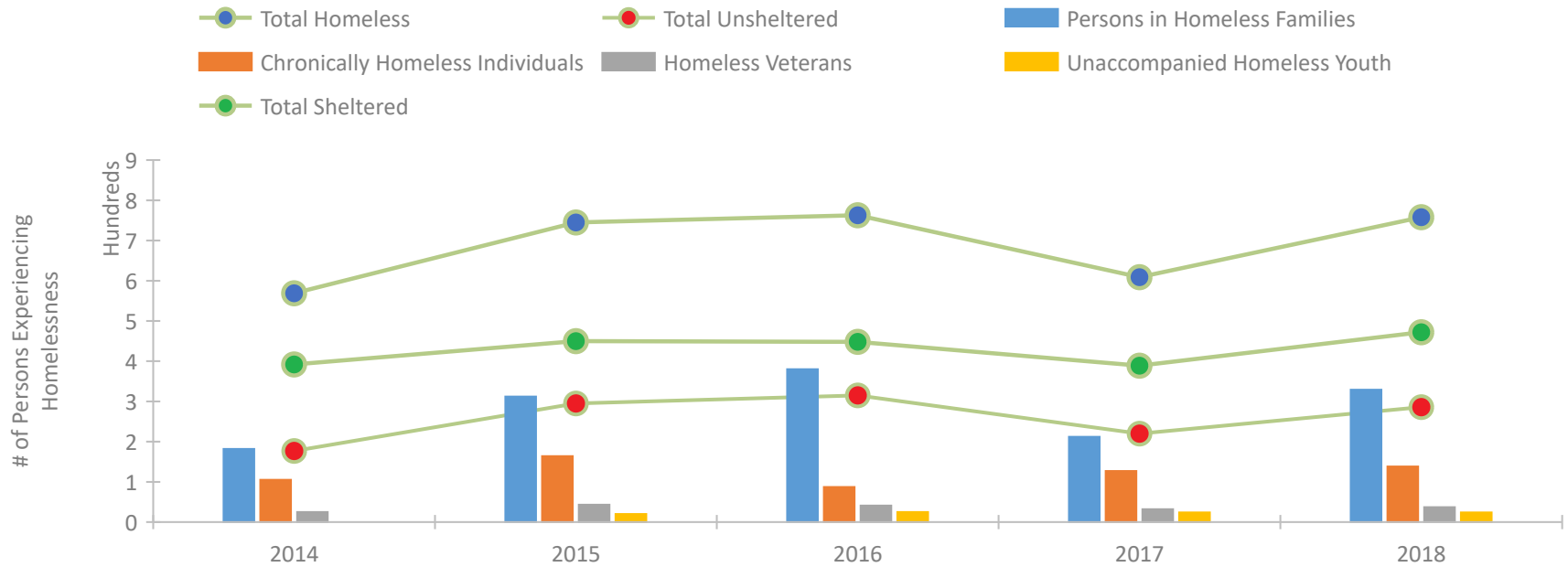
CoC Performance Profile MD-505 Baltimore County CoC



Housing Inventory Count by Program Type

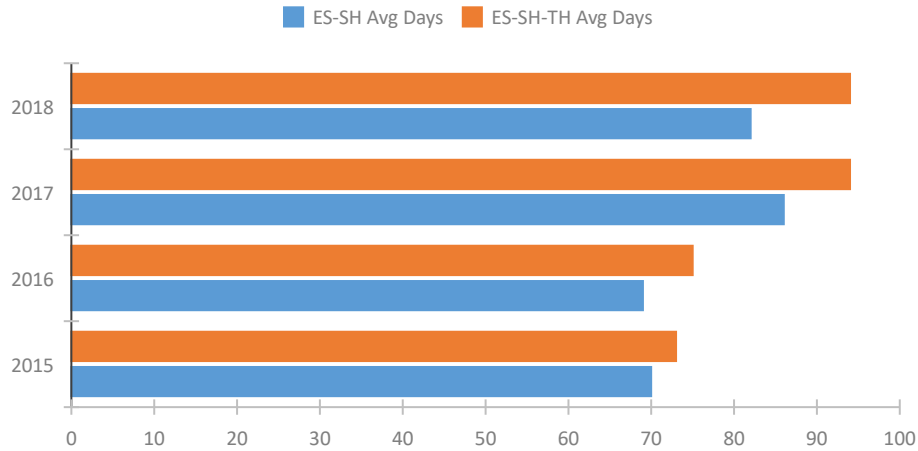


Homeless Population – Point-in-Time (PIT) Count

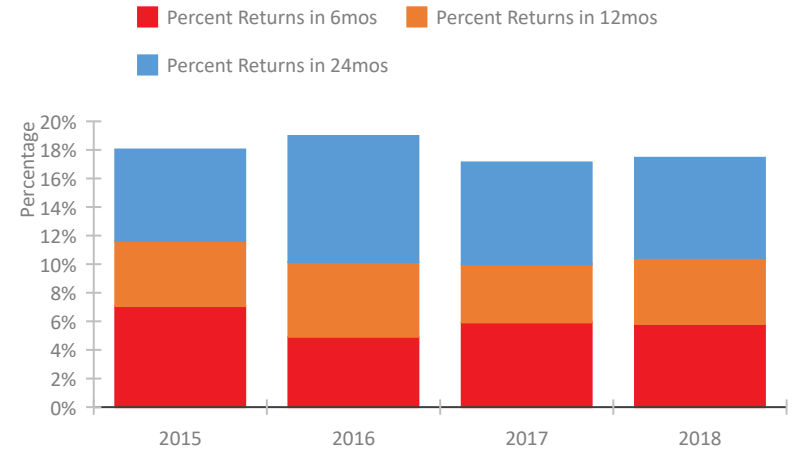


CoC Performance Profile MD-505 Baltimore County CoC

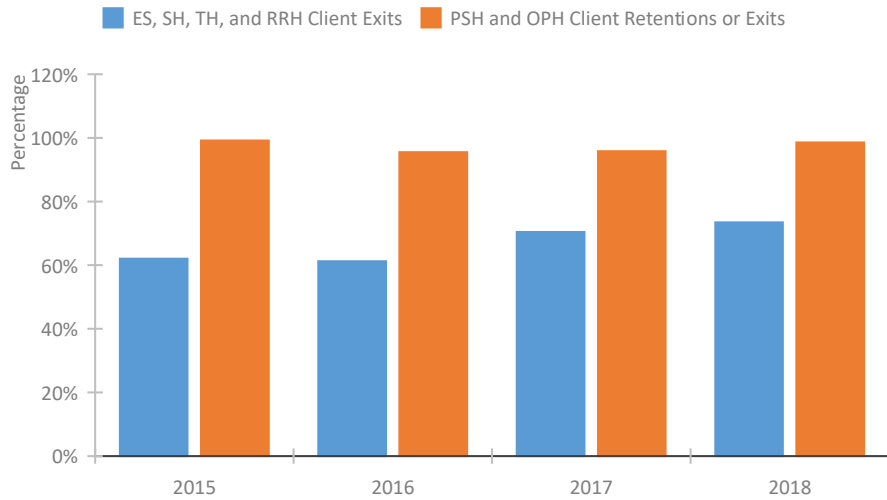
Length of Time Homeless



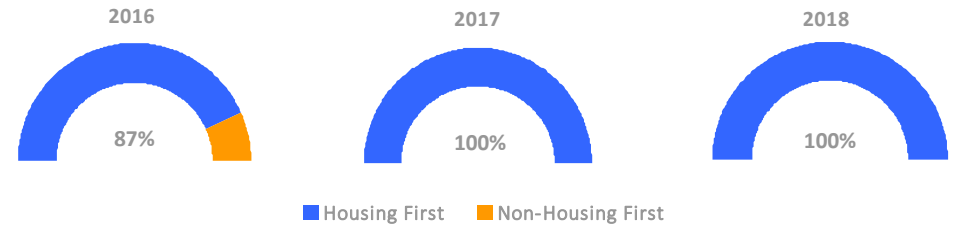
Returns to Homelessness Over Time



Exits to Permanent Housing by Program Type



Proportion of Housing First Projects by Year



Number of Projects by Year

	2016	2017	2018
Housing First Projects	13	14	12
Non-Housing First Projects	2	0	0

Data Summary: MD-505 Baltimore County CoC

Point-In-Time Count Summary

	2014	2015	2016	2017	2018	2017-18 Change	% Change
Number of Sheltered Persons in Families	182	236	234	207	269	62	30%
Number of Unsheltered Persons in Families	0	76	146	5	60	55	1100%
Number of Sheltered Individuals	210	214	214	182	203	21	12%
Number of Unsheltered Individuals	177	219	169	215	226	11	5%
Total Homeless Persons	569	745	763	609	758	149	24%
Number of Sheltered Families	75	83	76	66	84	18	27%
Number of Unsheltered Families	0	15	45	2	16	14	700%
Number of Total Families	75	98	121	68	100	32	47%
Sheltered Chronically Homeless Individuals	49	60	18	12	28	16	133%
Unsheltered Chronically Homeless Individuals	56	104	69	115	110	-5	-4%
Total Chronically Homeless Individuals	105	164	87	127	138	11	9%
Sheltered Veterans	13	14	17	20	16	-4	-20%
Unsheltered Veterans	12	29	24	12	21	9	75%
Total Veterans	25	43	41	32	37	5	16%
Sheltered Unaccompanied Youth (up to 24)	--	13	14	14	8	-6	-43%
Unsheltered Unaccompanied Youth (up to 24)	--	7	11	10	16	6	60%
Total Unaccompanied Youth (up to 24)	--	20	25	24	24	0	0%

System Performance Measures Summary

	2014	2015	2016	2017	2018	2017-18 Change	% Change
Average Length of Time Homeless (days)	N/A	73	75	94	94	0	0%
Rate People Return to Homelessness in 6 Months	N/A	7.1%	4.9%	5.9%	5.8%	-0.1%	N/A
Number of People who are Homeless for the First Time	N/A	1817	1612	1342	1649	307	22.9%
Rate People Exit from ES, SH, TH, and RRH to PH	N/A	62.0%	61.2%	70.4%	73.5%	3%	N/A
Rate People in PSH and OPH Retain or Exit to PH	N/A	99.2%	95.5%	95.8%	98.6%	2.8%	N/A

Housing Inventory Count Summary

	2014	2015	2016	2017	2018	2017-18 Change	% Change
Emergency Shelter (ES)	377	377	387	394	510	116	29%
Transitional Housing (TH)	53	53	47	56	75	19	34%
Permanent Supportive Housing (PSH)	445	445	459	522	544	22	4%
Rapid Re-Housing (RRH)	--	181	267	362	166	-196	-54%

Award Summary

	2014	2015	2016	2017	2018	2017-18 Change	% Change
Continuum of Care (CoC)	\$2,633,522	\$2,766,391	\$2,766,391	\$2,875,569	\$3,004,848	\$129,279	4%
Emergency Solutions Grants (ESG)	\$306,073	\$328,157	\$326,513	\$324,469	\$322,916	(\$1,553)	0%