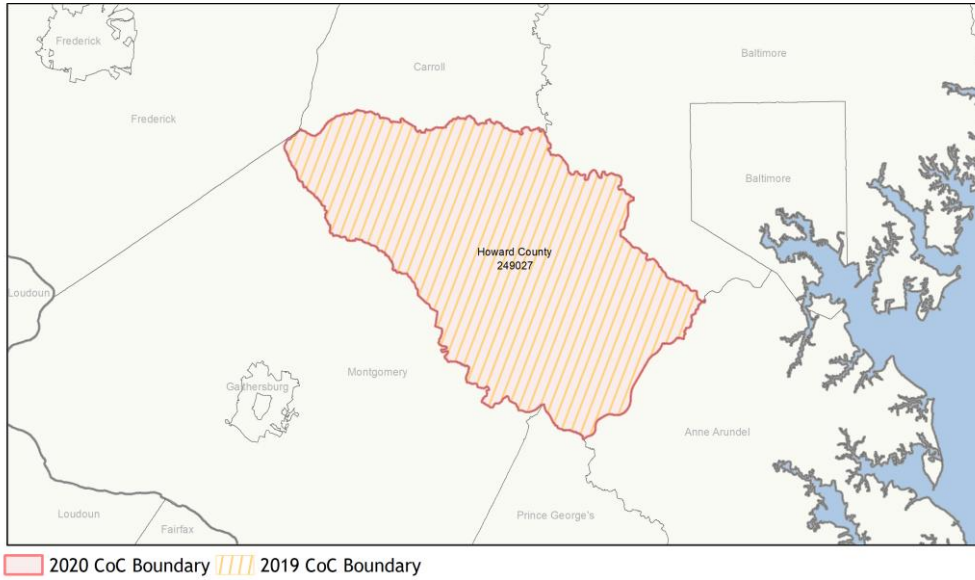
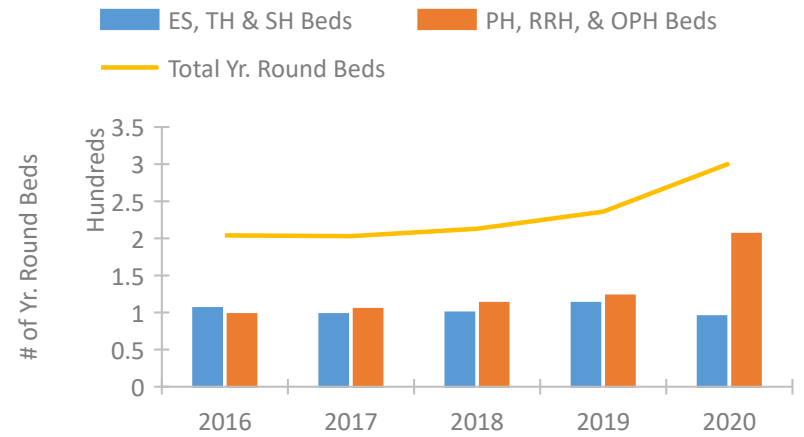


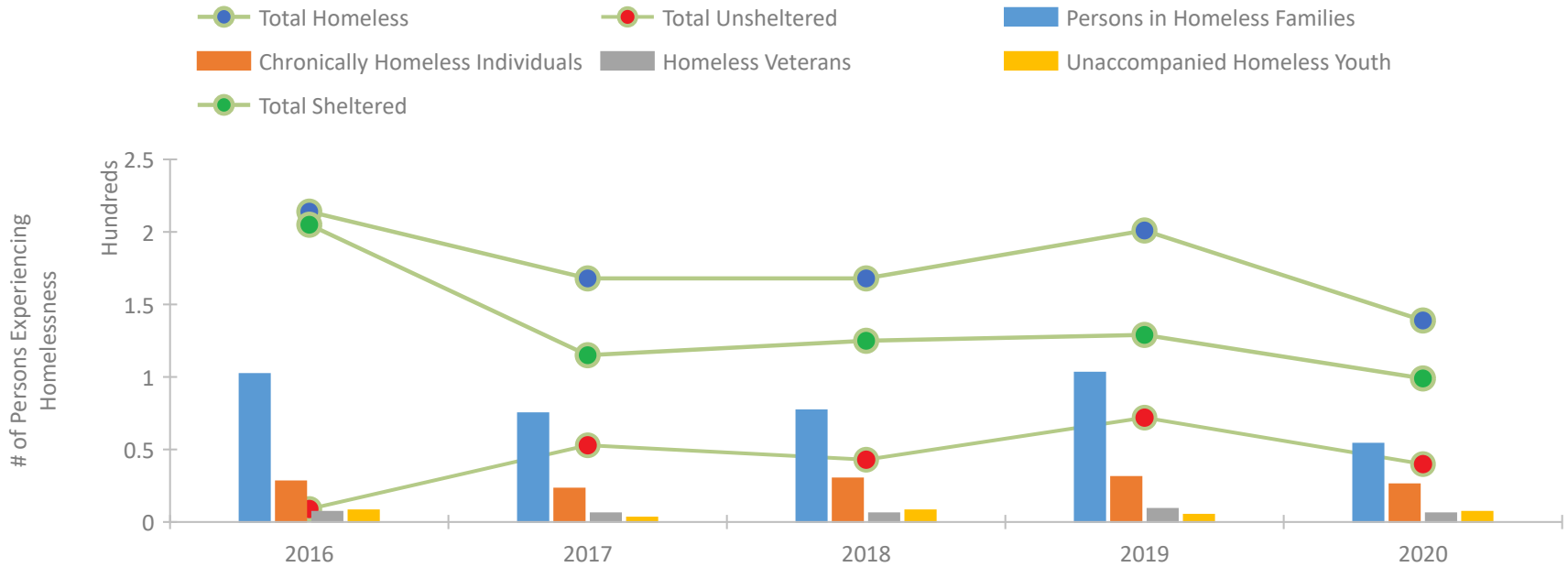
CoC Performance Profile MD-504 Howard County CoC



Housing Inventory Count by Program Type

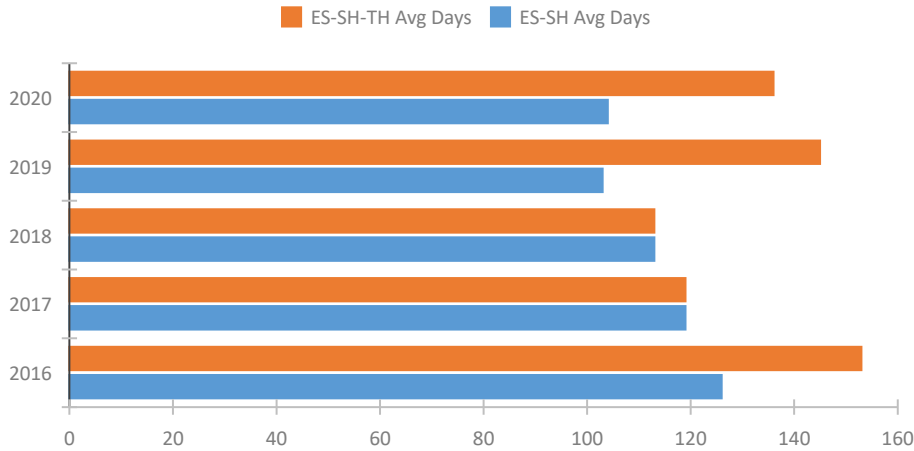


Homeless Population – Point-in-Time (PIT) Count

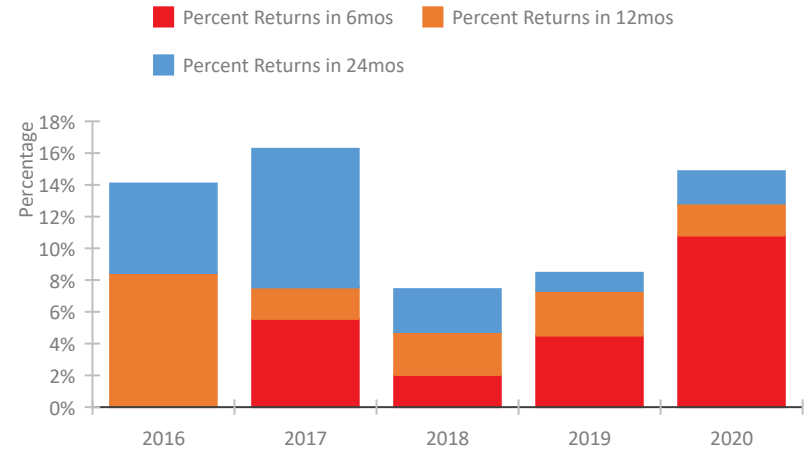


CoC Performance Profile MD-504 Howard County CoC

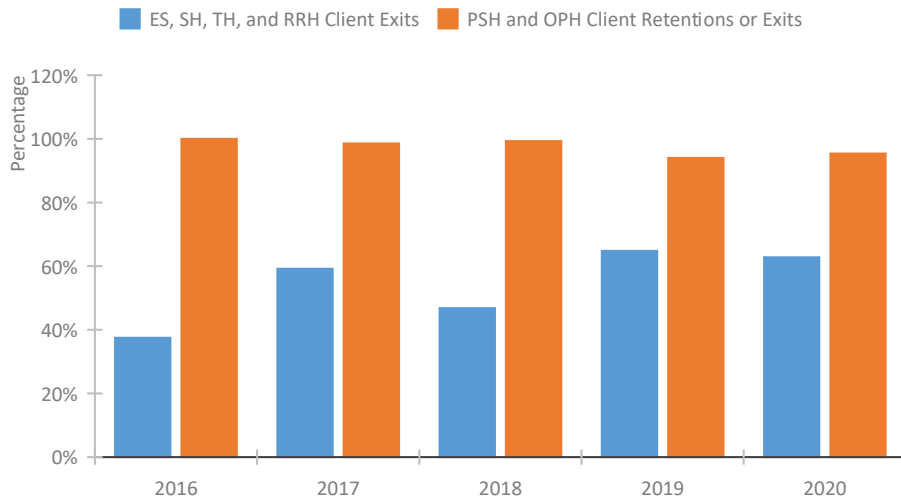
Length of Time Homeless



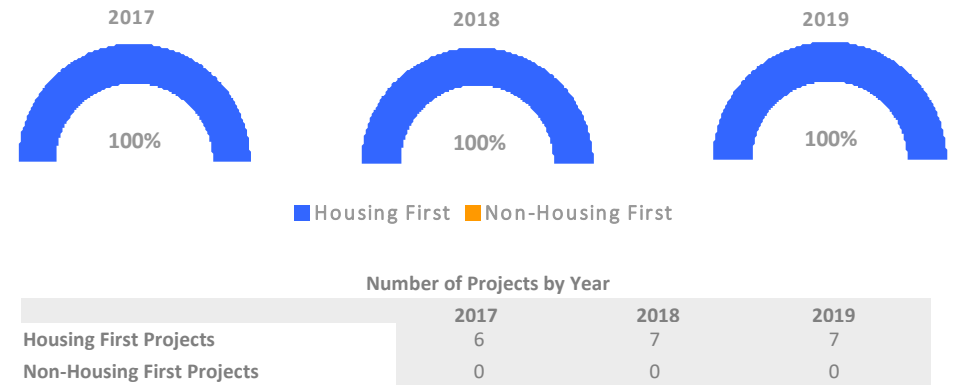
Returns to Homelessness Over Time



Exits to Permanent Housing by Program Type



Proportion of Housing First Projects by Year*



*In 2020 HUD awarded renewal projects noncompetitively, therefore no new data was collected and Housing First data remains the same from 2019 to 2020.

Data Summary: MD-504 Howard County CoC

Point-In-Time Count Summary

	2016	2017	2018	2019	2020	2019-20 Change	% Change
Number of Sheltered Persons in Families	100	66	74	74	47	-27	-36%
Number of Unsheltered Persons in Families	2	9	3	29	7	-22	-76%
Number of Sheltered Individuals	105	49	51	55	52	-3	-5%
Number of Unsheltered Individuals	7	44	40	43	33	-10	-23%
Total Homeless Persons	214	168	168	201	139	-62	-31%
Number of Sheltered Families	29	22	22	24	15	-9	-38%
Number of Unsheltered Families	1	3	1	6	2	-4	-67%
Number of Total Families	30	25	23	30	17	-13	-43%
Sheltered Chronically Homeless Individuals	24	9	11	15	13	-2	-13%
Unsheltered Chronically Homeless Individuals	4	14	19	16	13	-3	-19%
Total Chronically Homeless Individuals	28	23	30	31	26	-5	-16%
Sheltered Veterans	6	2	1	4	2	-2	-50%
Unsheltered Veterans	1	4	5	5	4	-1	-20%
Total Veterans	7	6	6	9	6	-3	-33%
Sheltered Unaccompanied Youth (up to 24)	8	3	3	4	2	-2	-50%
Unsheltered Unaccompanied Youth (up to 24)	0	0	5	1	5	4	400%
Total Unaccompanied Youth (up to 24)	8	3	8	5	7	2	40%

System Performance Measures Summary

	2016	2017	2018	2018	2020	2019-20 Change	% Change
Average Length of Time Homeless (days)	153	119	113	145	136	-9	-6.2%
Rate People Return to Homelessness in 6 Months	0.0%	5.6%	2.0%	4.5%	10.8%	6.3%	N/A
Number of People who are Homeless for the First Time	167	519	381	275	196	-79	-28.7%
Rate People Exit from ES, SH, TH, and RRH to PH	37.5%	59.2%	46.8%	64.8%	62.8%	-2%	N/A
Rate People in PSH and OPH Retain or Exit to PH	100.0%	98.6%	99.3%	94.0%	95.4%	1.4%	N/A

Housing Inventory Count Summary

	2016	2017	2018	2019	2020	2019-20 Change	% Change
Emergency Shelter (ES)	76	98	100	113	95	-18	-16%
Permanent Supportive Housing (PSH)	98	103	77	95	103	8	8%
Rapid Re-Housing (RRH)	--	--	--	--	69	--	--
Other Permanent Housing (OPH)	--	2	36	28	34	6	21%

Award Summary

	2016	2017	2018	2019	2020	2019-20 Change	% Change
Continuum of Care (CoC)	\$785,410	\$768,634	\$809,573	\$984,426	\$1,036,470	\$52,044	5%
ESG (MD state recipient - no direct funding)	\$1,056,568	\$1,070,371	\$1,071,832	\$1,121,541	\$1,169,121	\$47,580	4%