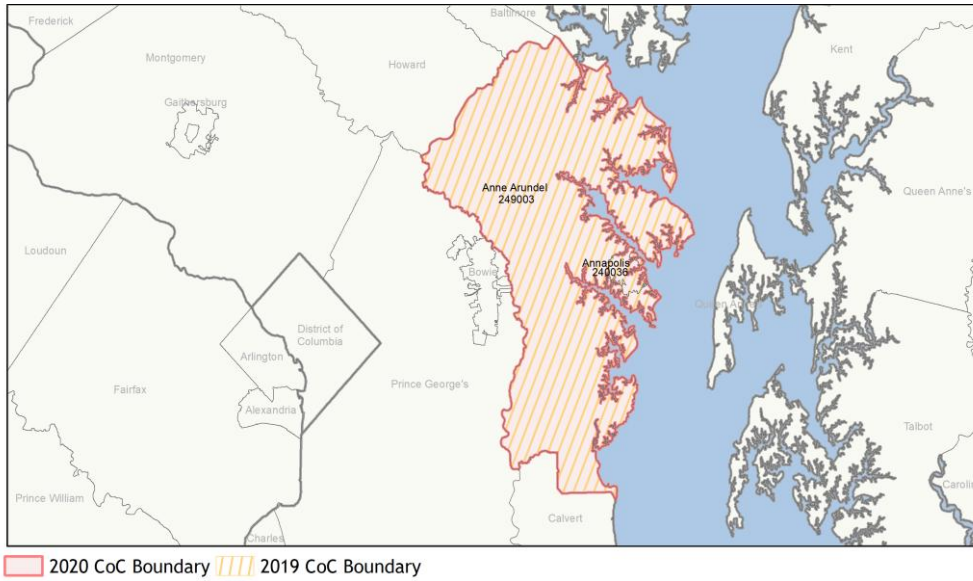
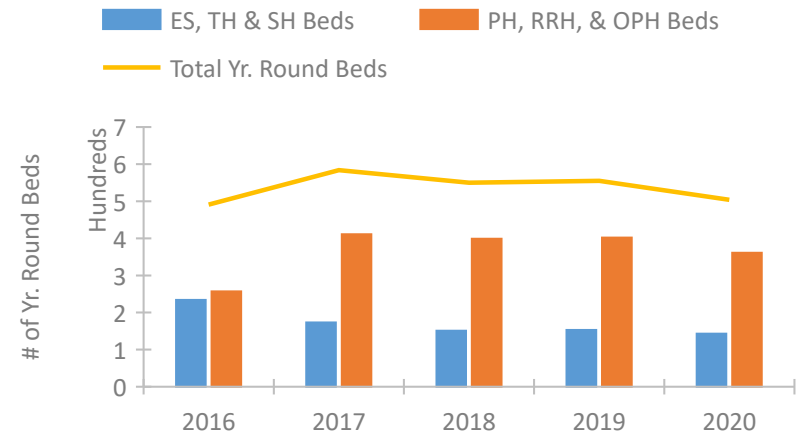


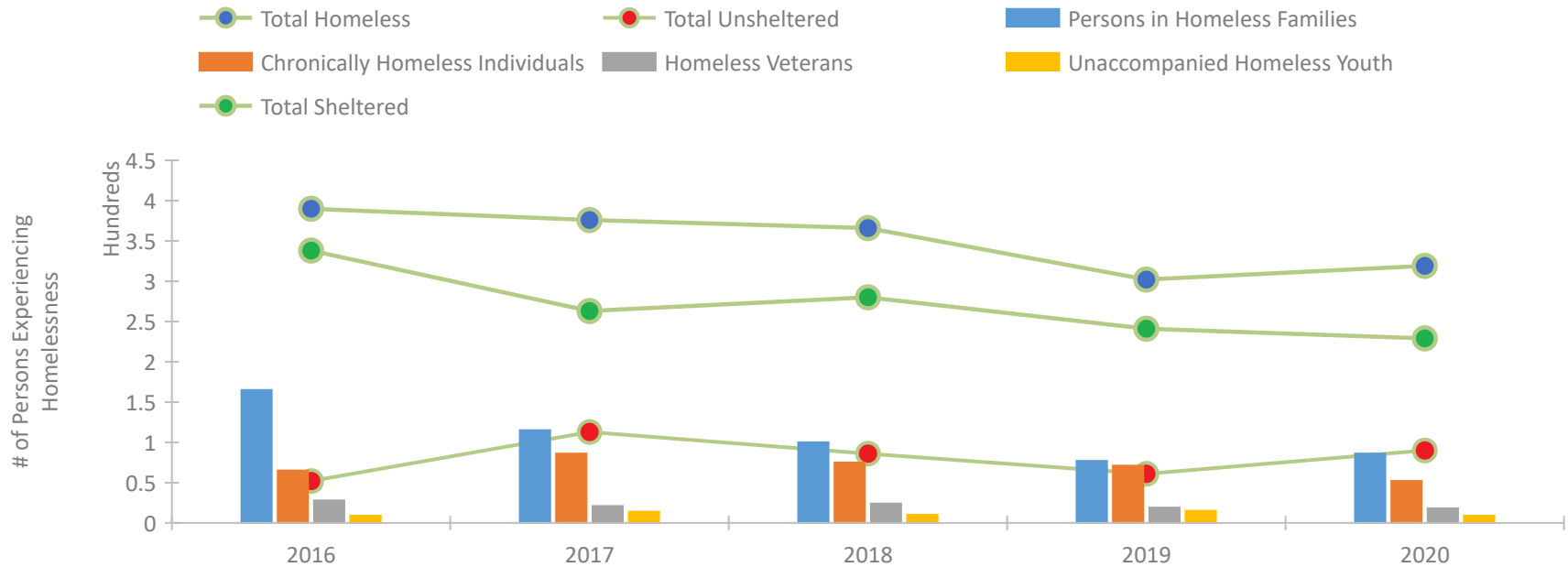
CoC Performance Profile MD-503 Annapolis/Ane Arundel County CoC



Housing Inventory Count by Program Type

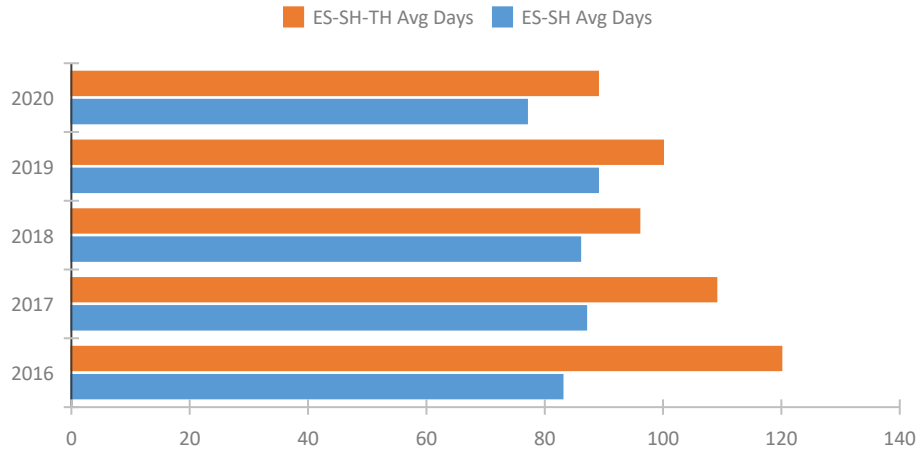


Homeless Population – Point-in-Time (PIT) Count

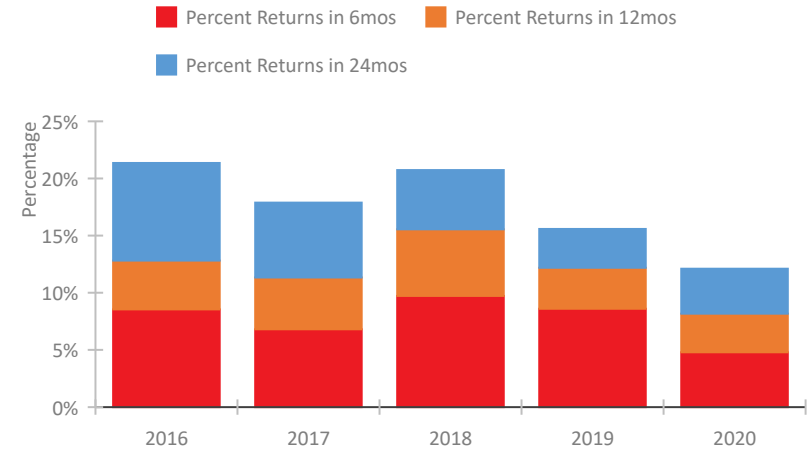


CoC Performance Profile MD-503 Annapolis/Anne Arundel County CoC

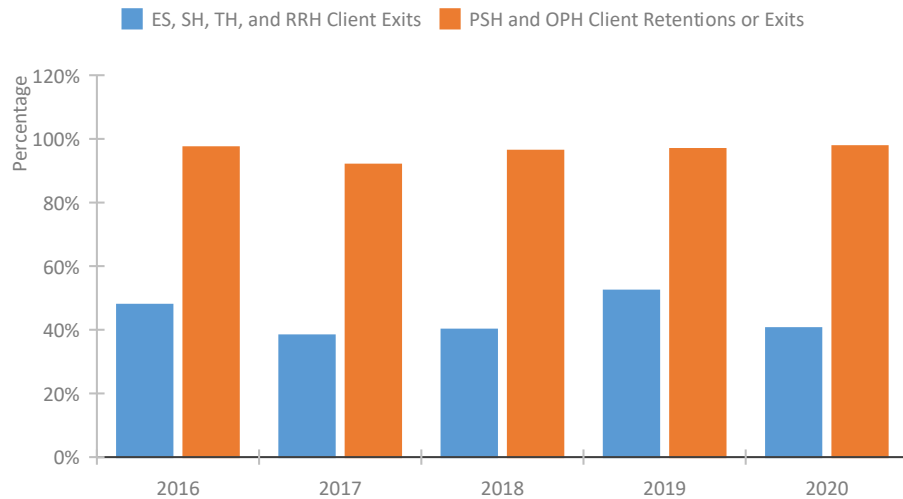
Length of Time Homeless



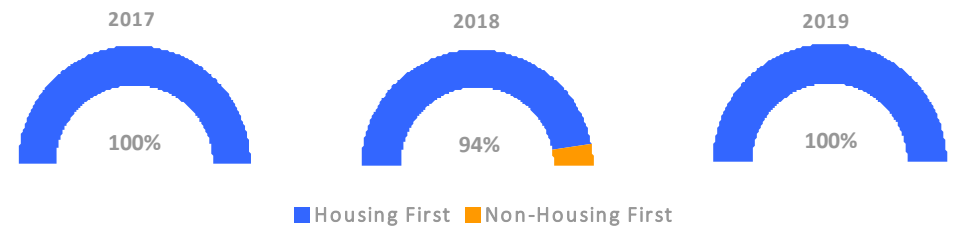
Returns to Homelessness Over Time



Exits to Permanent Housing by Program Type



Proportion of Housing First Projects by Year*



Number of Projects by Year			
	2017	2018	2019
Housing First Projects	14	15	9
Non-Housing First Projects	0	1	0

*In 2020 HUD awarded renewal projects noncompetitively, therefore no new data was collected and Housing First data remains the same from 2019 to 2020.

Data Summary: MD-503 Annapolis/Anne Arundel County CoC

Point-In-Time Count Summary

	2016	2017	2018	2019	2020	2019-20 Change	% Change
Number of Sheltered Persons in Families	160	115	97	75	83	8	11%
Number of Unsheltered Persons in Families	5	0	3	2	3	1	50%
Number of Sheltered Individuals	178	148	183	166	146	-20	-12%
Number of Unsheltered Individuals	47	113	83	59	87	28	47%
Total Homeless Persons	390	376	366	302	319	17	6%
Number of Sheltered Families	50	36	32	25	29	4	16%
Number of Unsheltered Families	1	0	1	1	1	0	-0%
Number of Total Families	51	36	33	26	30	4	15%
Sheltered Chronically Homeless Individuals	43	33	38	38	26	-12	-32%
Unsheltered Chronically Homeless Individuals	22	53	37	33	26	-7	-21%
Total Chronically Homeless Individuals	65	86	75	71	52	-19	-27%
Sheltered Veterans	23	15	16	15	14	-1	-7%
Unsheltered Veterans	5	6	8	4	4	0	-0%
Total Veterans	28	21	24	19	18	-1	-5%
Sheltered Unaccompanied Youth (up to 24)	7	8	8	10	8	-2	-20%
Unsheltered Unaccompanied Youth (up to 24)	2	6	2	5	1	-4	-80%
Total Unaccompanied Youth (up to 24)	9	14	10	15	9	-6	-40%

System Performance Measures Summary

	2016	2017	2018	2018	2020	2019-20 Change	% Change
Average Length of Time Homeless (days)	120	109	96	100	89	-11	-11%
Rate People Return to Homelessness in 6 Months	8.5%	6.8%	9.7%	8.6%	4.8%	-3.8%	N/A
Number of People who are Homeless for the First Time	620	641	633	695	766	71	10.2%
Rate People Exit from ES, SH, TH, and RRH to PH	47.8%	38.3%	40.1%	52.3%	40.5%	-11.8%	N/A
Rate People in PSH and OPH Retain or Exit to PH	97.3%	91.9%	96.3%	96.8%	97.7%	0.9%	N/A

Housing Inventory Count Summary

	2016	2017	2018	2019	2020	2019-20 Change	% Change
Emergency Shelter (ES)	142	148	132	138	129	-9	-7%
Transitional Housing (TH)	92	25	19	15	14	-1	-7%
Permanent Supportive Housing (PSH)	202	324	267	227	265	38	17%
Rapid Re-Housing (RRH)	55	87	64	105	42	-63	-60%
Other Permanent Housing (OPH)	--	--	68	70	54	-16	-23%

Award Summary

	2016	2017	2018	2019	2020	2019-20 Change	% Change
Continuum of Care (CoC)	\$2,303,378	\$2,420,435	\$2,472,691	\$2,385,199	\$2,459,396	\$74,197	3%
Emergency Solutions Grants (ESG)	\$161,647	\$163,603	\$158,508	\$166,664	\$177,268	\$10,604	6%