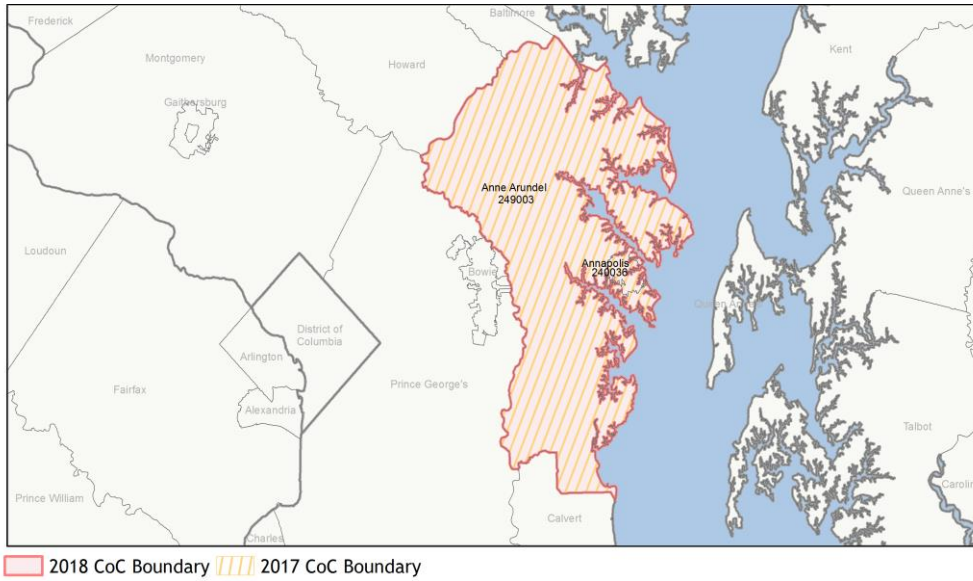
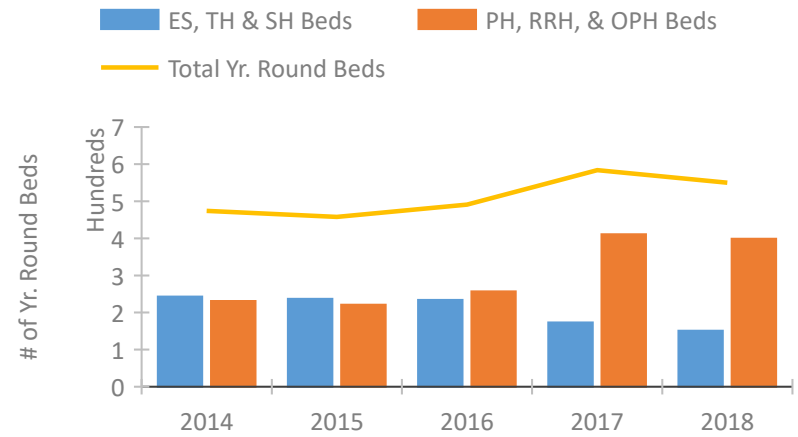


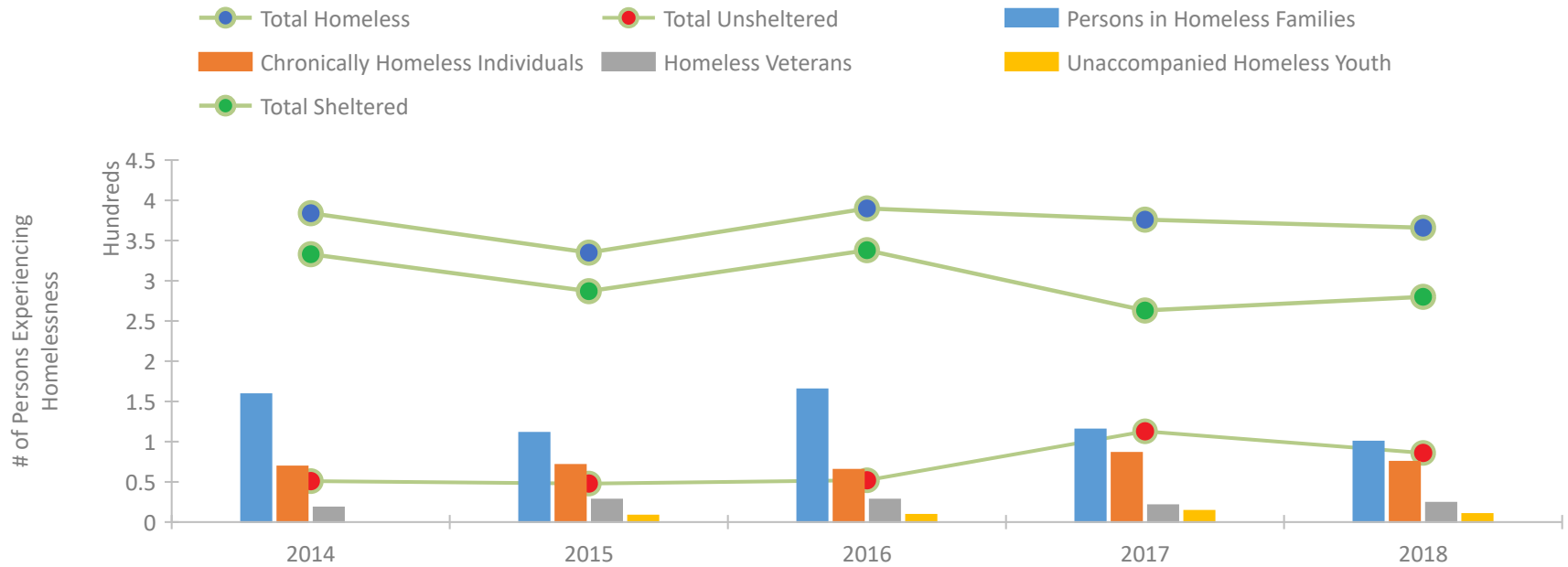
CoC Performance Profile MD-503 Annapolis/Anne Arundel County CoC



Housing Inventory Count by Program Type

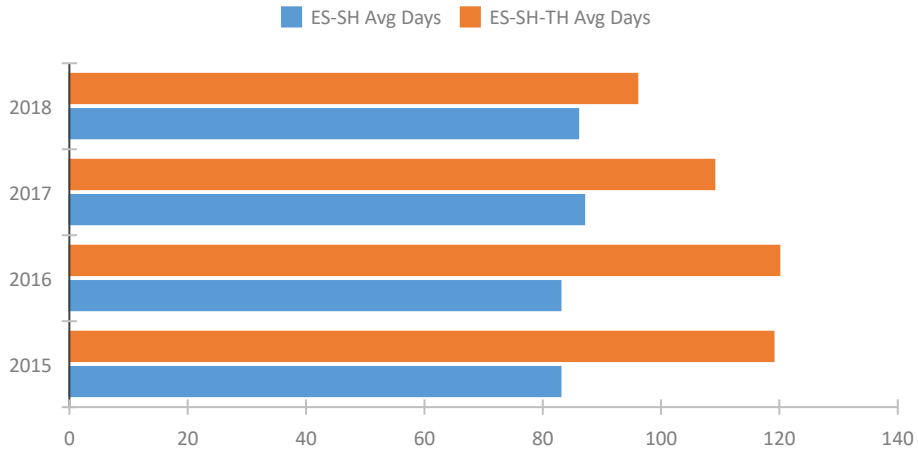


Homeless Population – Point-in-Time (PIT) Count

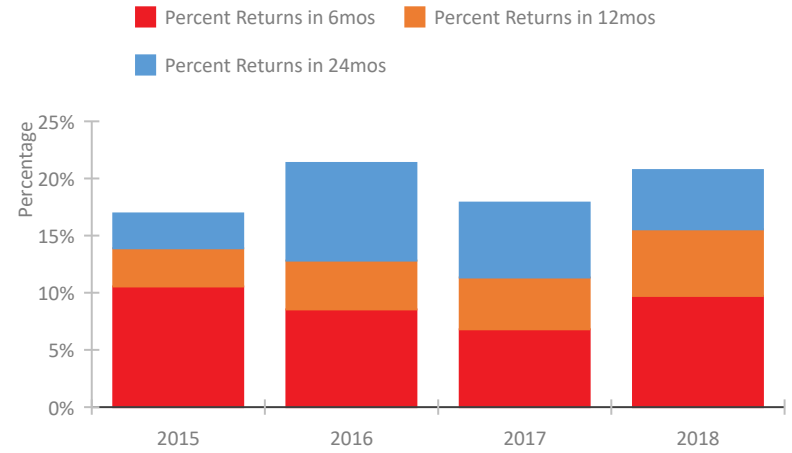


CoC Performance Profile MD-503 Annapolis/Ane Arundel County CoC

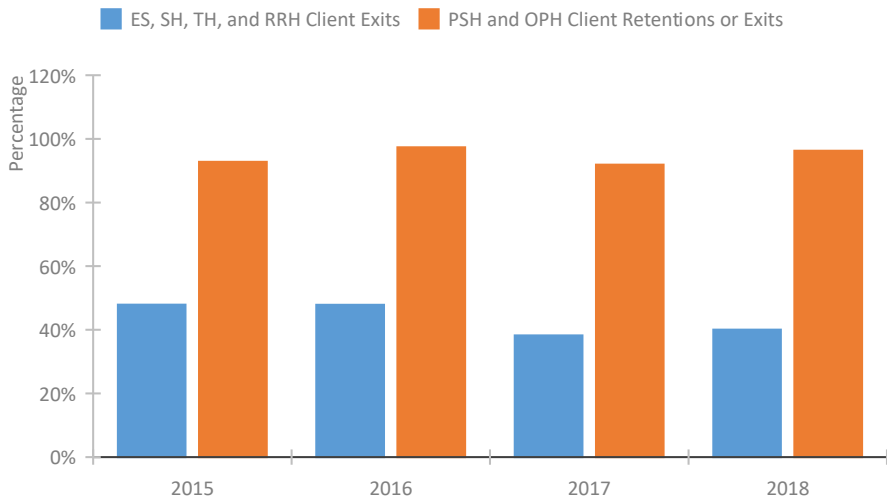
Length of Time Homeless



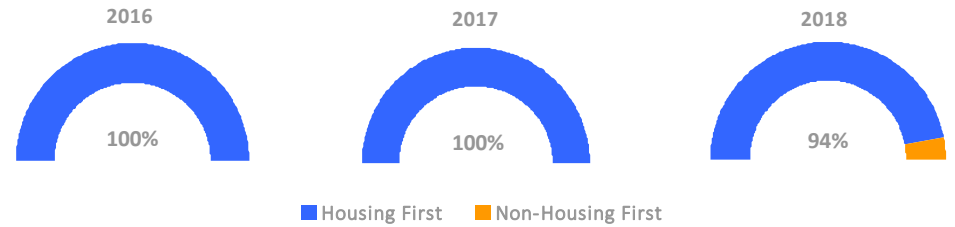
Returns to Homelessness Over Time



Exits to Permanent Housing by Program Type



Proportion of Housing First Projects by Year



Number of Projects by Year

	2016	2017	2018
Housing First Projects	13	14	15
Non-Housing First Projects	0	0	1

Data Summary: MD-503 Annapolis/Anne Arundel County CoC

Point-In-Time Count Summary

	2014	2015	2016	2017	2018	2017-18 Change	% Change
Number of Sheltered Persons in Families	159	111	160	115	97	-18	-16%
Number of Unsheltered Persons in Families	0	0	5	0	3	3	100%
Number of Sheltered Individuals	174	176	178	148	183	35	24%
Number of Unsheltered Individuals	51	48	47	113	83	-30	-27%
Total Homeless Persons	384	335	390	376	366	-10	-3%
Number of Sheltered Families	50	34	50	36	32	-4	-11%
Number of Unsheltered Families	0	0	1	0	1	1	100%
Number of Total Families	50	34	51	36	33	-3	-8%
Sheltered Chronically Homeless Individuals	38	46	43	33	38	5	15%
Unsheltered Chronically Homeless Individuals	31	25	22	53	37	-16	-30%
Total Chronically Homeless Individuals	69	71	65	86	75	-11	-13%
Sheltered Veterans	18	24	23	15	16	1	7%
Unsheltered Veterans	0	4	5	6	8	2	33%
Total Veterans	18	28	28	21	24	3	14%
Sheltered Unaccompanied Youth (up to 24)	--	5	7	8	8	0	0%
Unsheltered Unaccompanied Youth (up to 24)	--	3	2	6	2	-4	-67%
Total Unaccompanied Youth (up to 24)	--	8	9	14	10	-4	-29%

System Performance Measures Summary

	2014	2015	2016	2017	2018	2017-18 Change	% Change
Average Length of Time Homeless (days)	N/A	119	120	109	96	-13	-11.9%
Rate People Return to Homelessness in 6 Months	N/A	10.6%	8.5%	6.8%	9.7%	2.9%	N/A
Number of People who are Homeless for the First Time	N/A	678	620	641	633	-8	-1.2%
Rate People Exit from ES, SH, TH, and RRH to PH	N/A	47.9%	47.8%	38.3%	40.1%	1.8%	N/A
Rate People in PSH and OPH Retain or Exit to PH	N/A	92.8%	97.3%	91.9%	96.3%	4.4%	N/A

Housing Inventory Count Summary

	2014	2015	2016	2017	2018	2017-18 Change	% Change
Emergency Shelter (ES)	147	147	142	148	132	-16	-11%
Transitional Housing (TH)	96	90	92	25	19	-6	-24%
Permanent Supportive Housing (PSH)	202	208	202	324	267	-57	-18%
Rapid Re-Housing (RRH)	29	13	55	87	64	-23	-26%
Other Permanent Housing (OPH)	--	--	--	--	68	--	--

Award Summary

	2014	2015	2016	2017	2018	2017-18 Change	% Change
Continuum of Care (CoC)	\$2,451,633	\$2,175,878	\$2,303,378	\$2,420,435	\$2,472,691	\$52,256	2%
Emergency Solutions Grants (ESG)	\$148,328	\$158,455	\$161,647	\$163,603	\$158,508	(\$5,095)	-3%