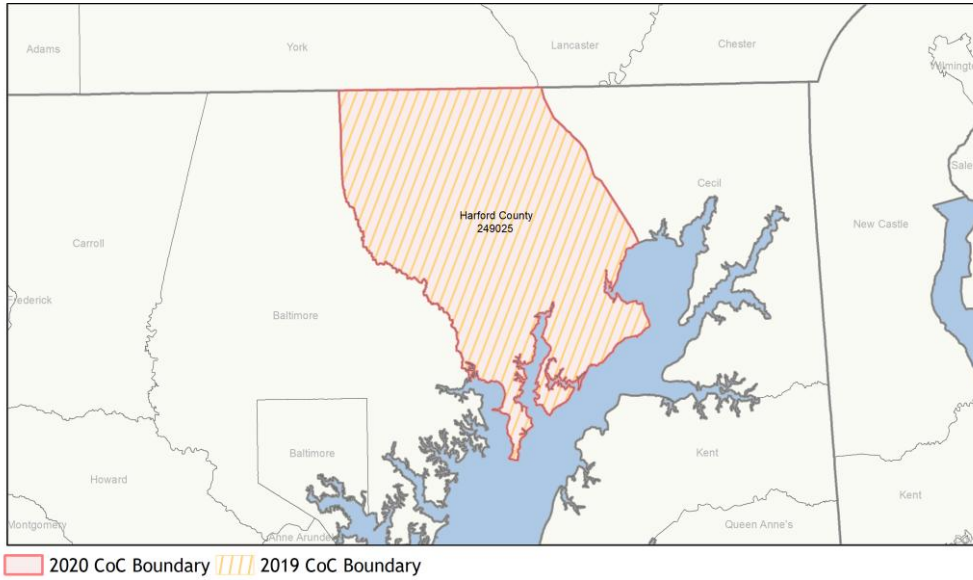
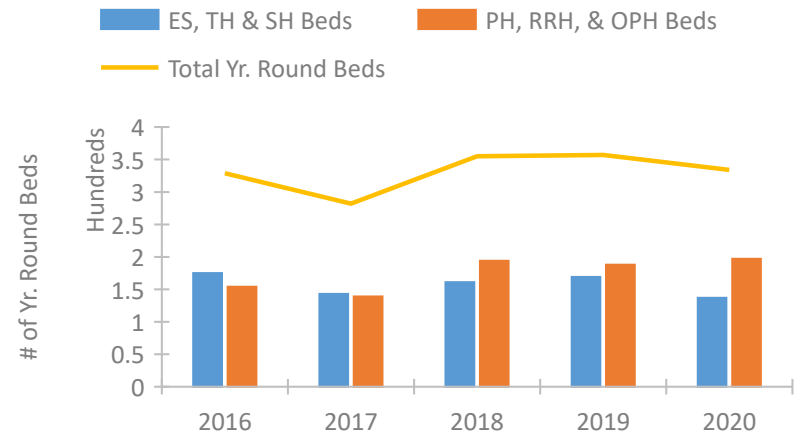


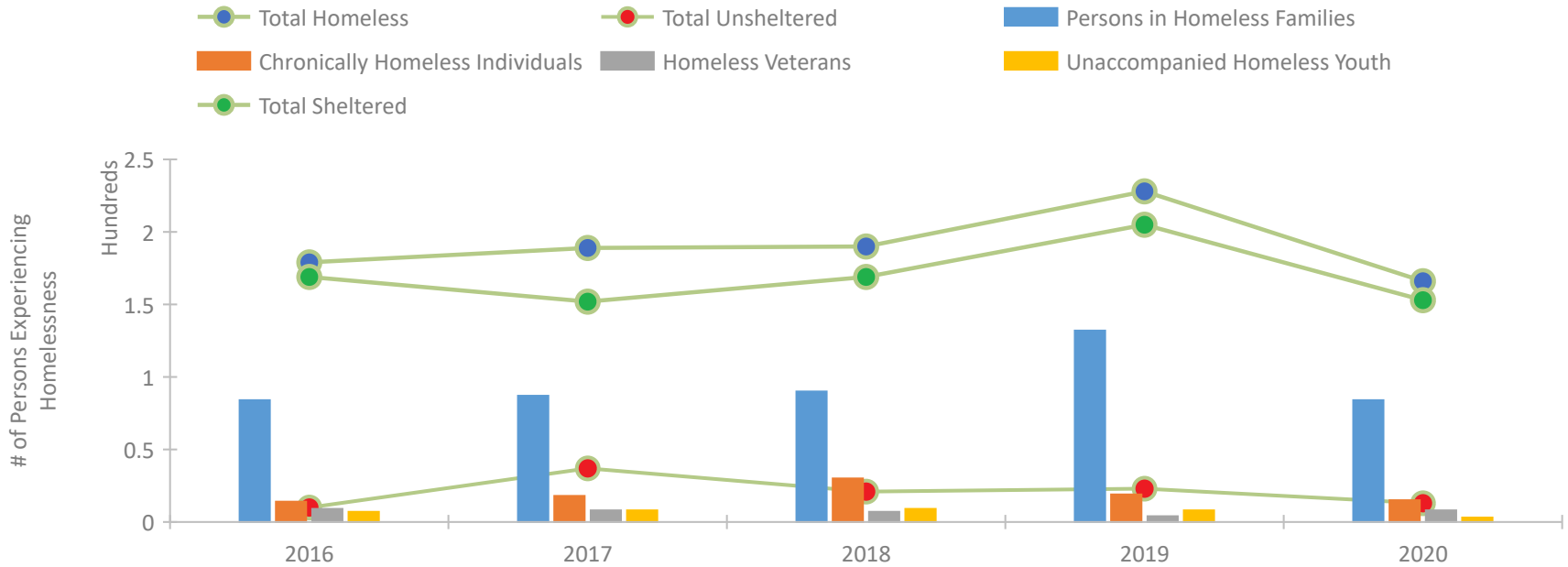
CoC Performance Profile MD-502 Harford County CoC



Housing Inventory Count by Program Type

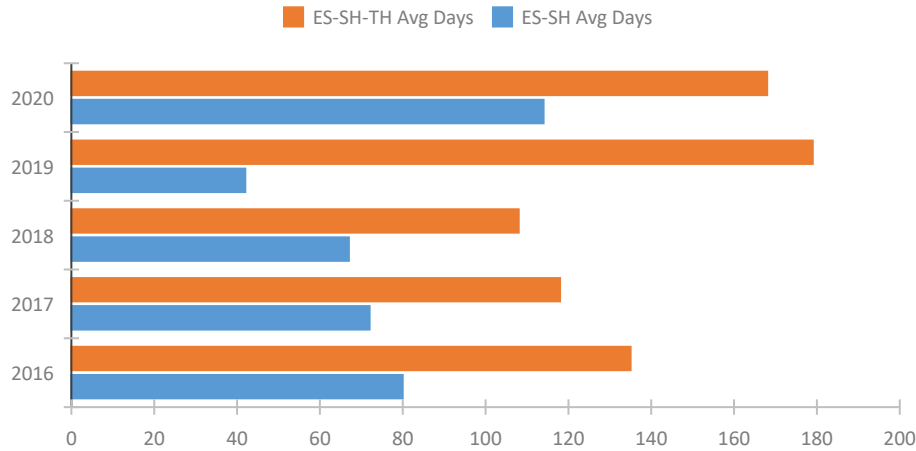


Homeless Population – Point-in-Time (PIT) Count

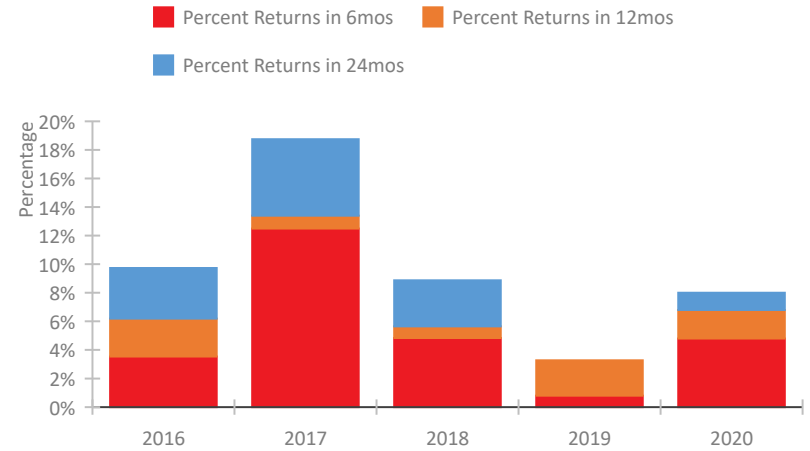


CoC Performance Profile MD-502 Harford County CoC

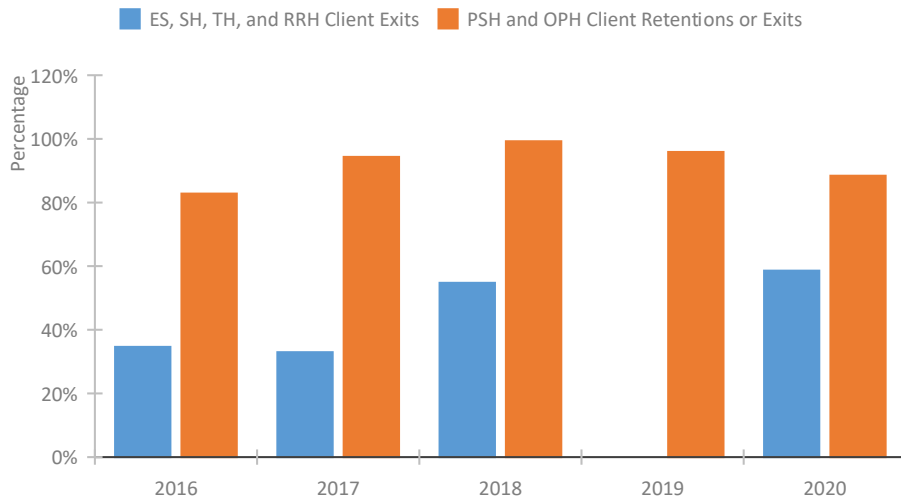
Length of Time Homeless



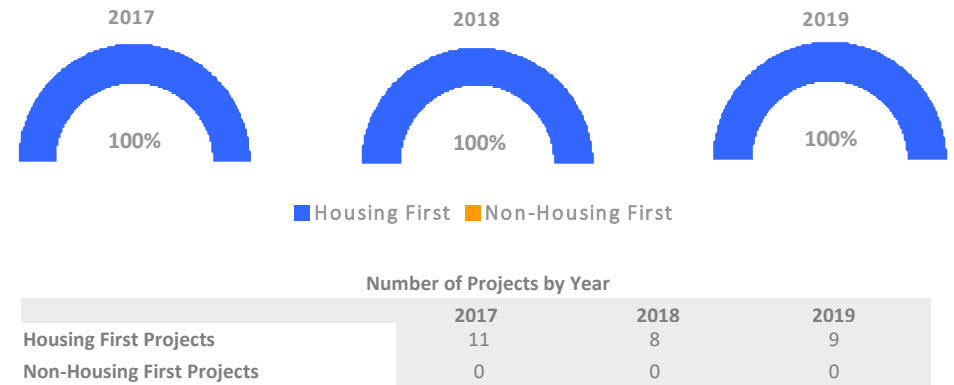
Returns to Homelessness Over Time



Exits to Permanent Housing by Program Type



Proportion of Housing First Projects by Year*



*In 2020 HUD awarded renewal projects noncompetitively, therefore no new data was collected and Housing First data remains the same from 2019 to 2020.

Data Summary: MD-502 Harford County CoC

Point-In-Time Count Summary

	2016	2017	2018	2019	2020	2019-20 Change	% Change
Number of Sheltered Persons in Families	84	87	90	132	84	-48	-36%
Number of Unsheltered Persons in Families	0	0	0	0	0	0	--
Number of Sheltered Individuals	85	65	79	73	69	-4	-5%
Number of Unsheltered Individuals	10	37	21	23	13	-10	-43%
Total Homeless Persons	179	189	190	228	166	-62	-27%
Number of Sheltered Families	28	28	26	35	25	-10	-29%
Number of Unsheltered Families	0	0	0	0	0	0	--
Number of Total Families	28	28	26	35	25	-10	-29%
Sheltered Chronically Homeless Individuals	11	8	17	11	13	2	18%
Unsheltered Chronically Homeless Individuals	3	10	13	8	2	-6	-75%
Total Chronically Homeless Individuals	14	18	30	19	15	-4	-21%
Sheltered Veterans	9	7	6	4	8	4	100%
Unsheltered Veterans	0	1	1	0	0	0	--
Total Veterans	9	8	7	4	8	4	100%
Sheltered Unaccompanied Youth (up to 24)	7	4	7	8	3	-5	-62%
Unsheltered Unaccompanied Youth (up to 24)	0	4	2	0	0	0	--
Total Unaccompanied Youth (up to 24)	7	8	9	8	3	-5	-62%

System Performance Measures Summary

	2016	2017	2018	2018	2020	2019-20 Change	% Change
Average Length of Time Homeless (days)	135	118	108	179	168	-11	-6.1%
Rate People Return to Homelessness in 6 Months	3.5%	12.5%	4.8%	0.8%	4.8%	4%	N/A
Number of People who are Homeless for the First Time	316	361	367	257	109	-148	-57.6%
Rate People Exit from ES, SH, TH, and RRH to PH	34.6%	33.0%	54.8%	--	58.6%	--	N/A
Rate People in PSH and OPH Retain or Exit to PH	82.8%	94.3%	99.2%	95.9%	88.4%	-7.5%	N/A

Housing Inventory Count Summary

	2016	2017	2018	2019	2020	2019-20 Change	% Change
Emergency Shelter (ES)	94	83	81	69	108	39	57%
Transitional Housing (TH)	81	60	80	100	29	-71	-71%
Permanent Supportive Housing (PSH)	154	139	159	153	165	12	8%
Rapid Re-Housing (RRH)	--	0	35	35	32	-3	-9%

Award Summary

	2016	2017	2018	2019	2020	2019-20 Change	% Change
Continuum of Care (CoC)	\$920,787	\$944,769	\$928,419	\$914,622	\$937,617	\$22,995	3%
ESG (MD state recipient - no direct funding)	\$1,056,568	\$1,070,371	\$1,071,832	\$1,121,541	\$1,169,121	\$47,580	4%