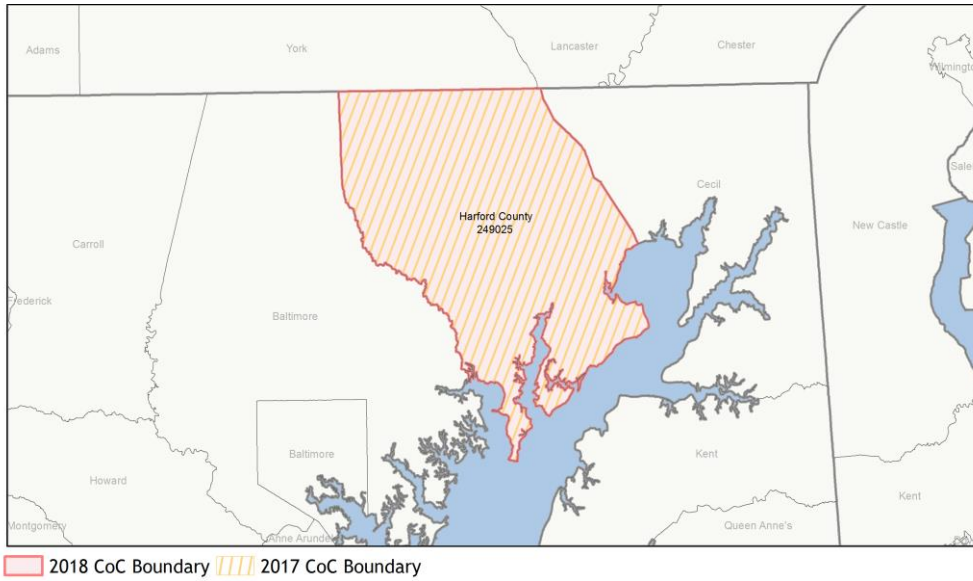
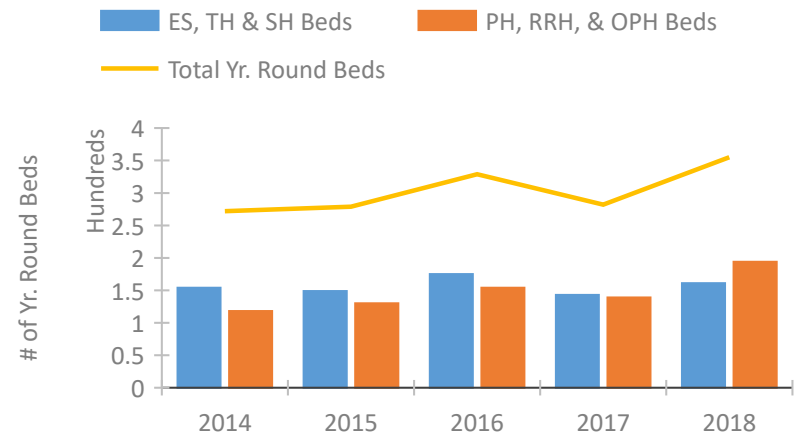


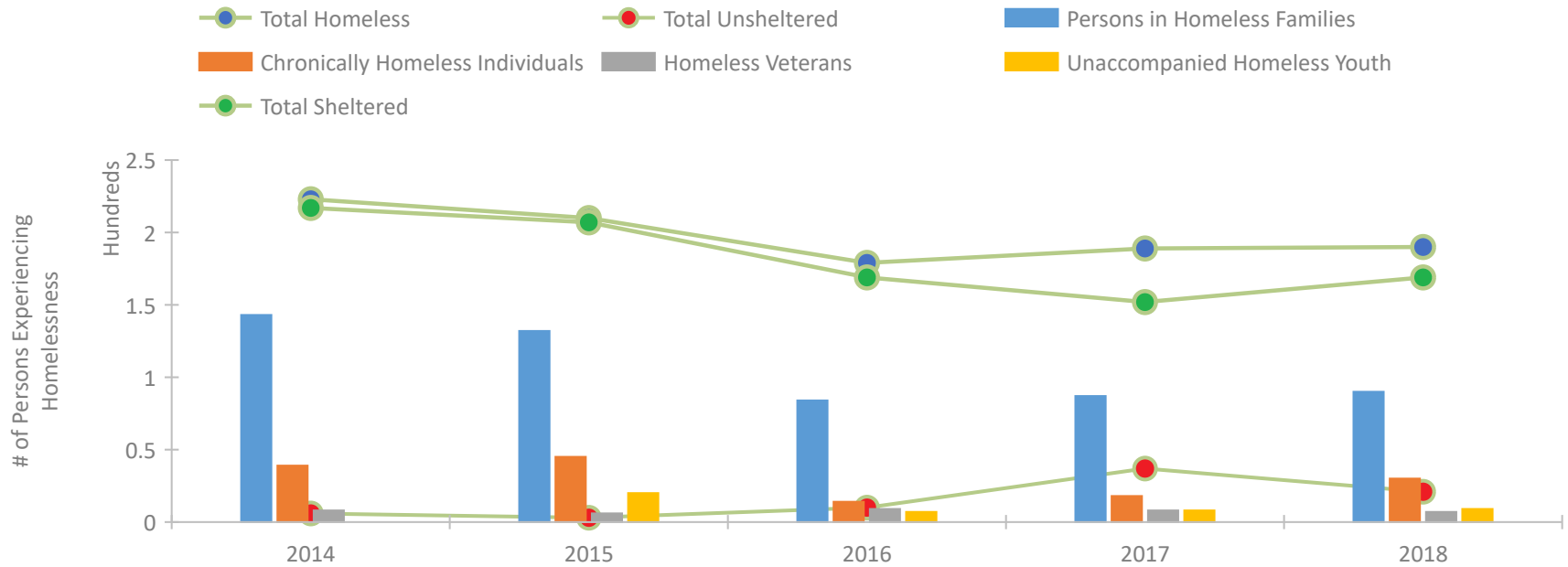
CoC Performance Profile MD-502 Harford County CoC



Housing Inventory Count by Program Type

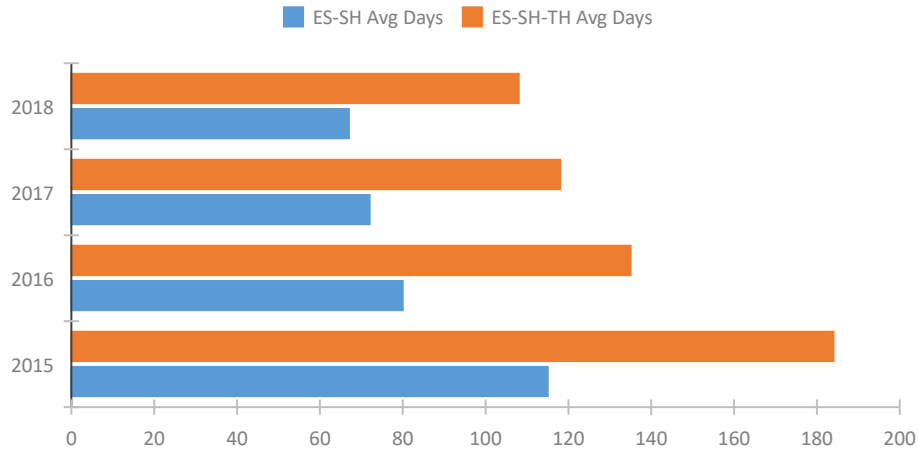


Homeless Population – Point-in-Time (PIT) Count

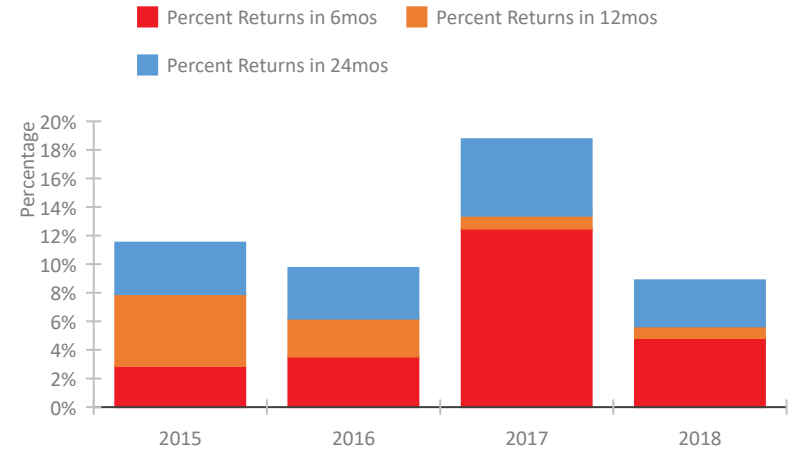


CoC Performance Profile MD-502 Harford County CoC

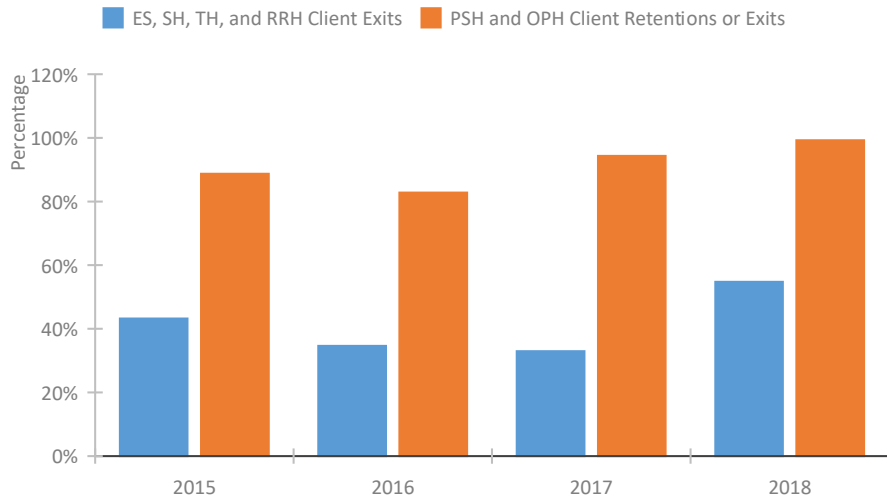
Length of Time Homeless



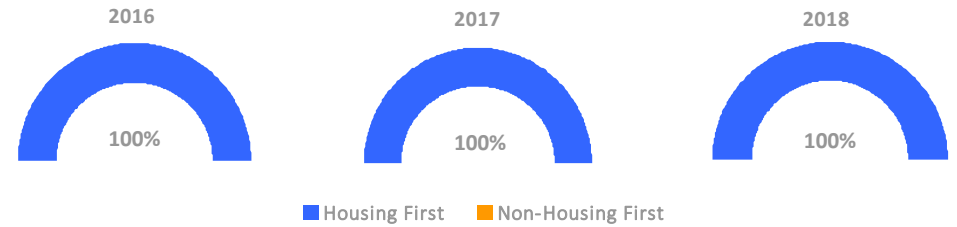
Returns to Homelessness Over Time



Exits to Permanent Housing by Program Type



Proportion of Housing First Projects by Year



Number of Projects by Year

	2016	2017	2018
Housing First Projects	16	11	8
Non-Housing First Projects	0	0	0

Data Summary: MD-502 Harford County CoC

Point-In-Time Count Summary

	2014	2015	2016	2017	2018	2017-18 Change	% Change
Number of Sheltered Persons in Families	143	132	84	87	90	3	3%
Number of Unsheltered Persons in Families	0	0	0	0	0	0	--
Number of Sheltered Individuals	74	75	85	65	79	14	22%
Number of Unsheltered Individuals	6	3	10	37	21	-16	-43%
Total Homeless Persons	223	210	179	189	190	1	1%
Number of Sheltered Families	46	41	28	28	26	-2	-7%
Number of Unsheltered Families	0	0	0	0	0	0	--
Number of Total Families	46	41	28	28	26	-2	-7%
Sheltered Chronically Homeless Individuals	36	42	11	8	17	9	112%
Unsheltered Chronically Homeless Individuals	3	3	3	10	13	3	30%
Total Chronically Homeless Individuals	39	45	14	18	30	12	67%
Sheltered Veterans	7	6	9	7	6	-1	-14%
Unsheltered Veterans	1	0	0	1	1	0	0%
Total Veterans	8	6	9	8	7	-1	-12%
Sheltered Unaccompanied Youth (up to 24)	--	20	7	4	7	3	75%
Unsheltered Unaccompanied Youth (up to 24)	--	0	0	4	2	-2	-50%
Total Unaccompanied Youth (up to 24)	--	20	7	8	9	1	12%

System Performance Measures Summary

	2014	2015	2016	2017	2018	2017-18 Change	% Change
Average Length of Time Homeless (days)	N/A	184	135	118	108	-10	-8.5%
Rate People Return to Homelessness in 6 Months	N/A	2.9%	3.5%	12.5%	4.8%	-7.7%	N/A
Number of People who are Homeless for the First Time	N/A	206	316	361	367	6	1.7%
Rate People Exit from ES, SH, TH, and RRH to PH	N/A	43.2%	34.6%	33.0%	54.8%	21.8%	N/A
Rate People in PSH and OPH Retain or Exit to PH	N/A	88.7%	82.8%	94.3%	99.2%	4.9%	N/A

Housing Inventory Count Summary

	2014	2015	2016	2017	2018	2017-18 Change	% Change
Emergency Shelter (ES)	65	80	94	83	81	-2	-2%
Transitional Housing (TH)	89	69	81	60	80	20	33%
Permanent Supportive Housing (PSH)	118	130	154	139	159	20	14%
Rapid Re-Housing (RRH)	--	--	--	0	35	35	100%

Award Summary

	2014	2015	2016	2017	2018	2017-18 Change	% Change
Continuum of Care (CoC)	\$808,335	\$927,130	\$920,787	\$944,769	\$928,419	(\$16,350)	-2%
ESG (MD state recipient - no direct funding)	\$953,756	\$1,053,270	\$1,056,568	\$1,070,371	\$1,071,832	\$1,461	0%