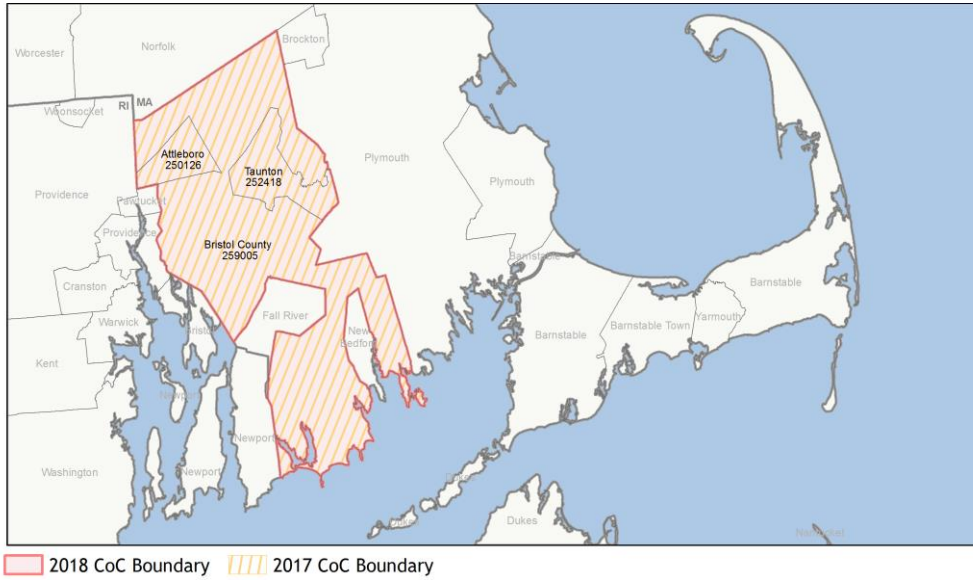
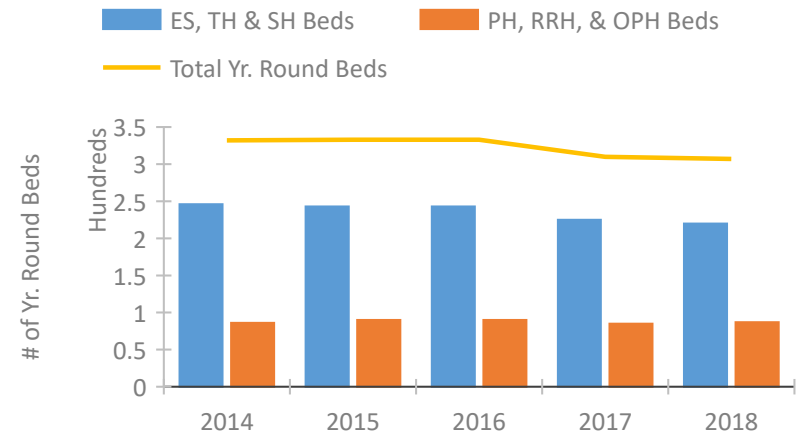


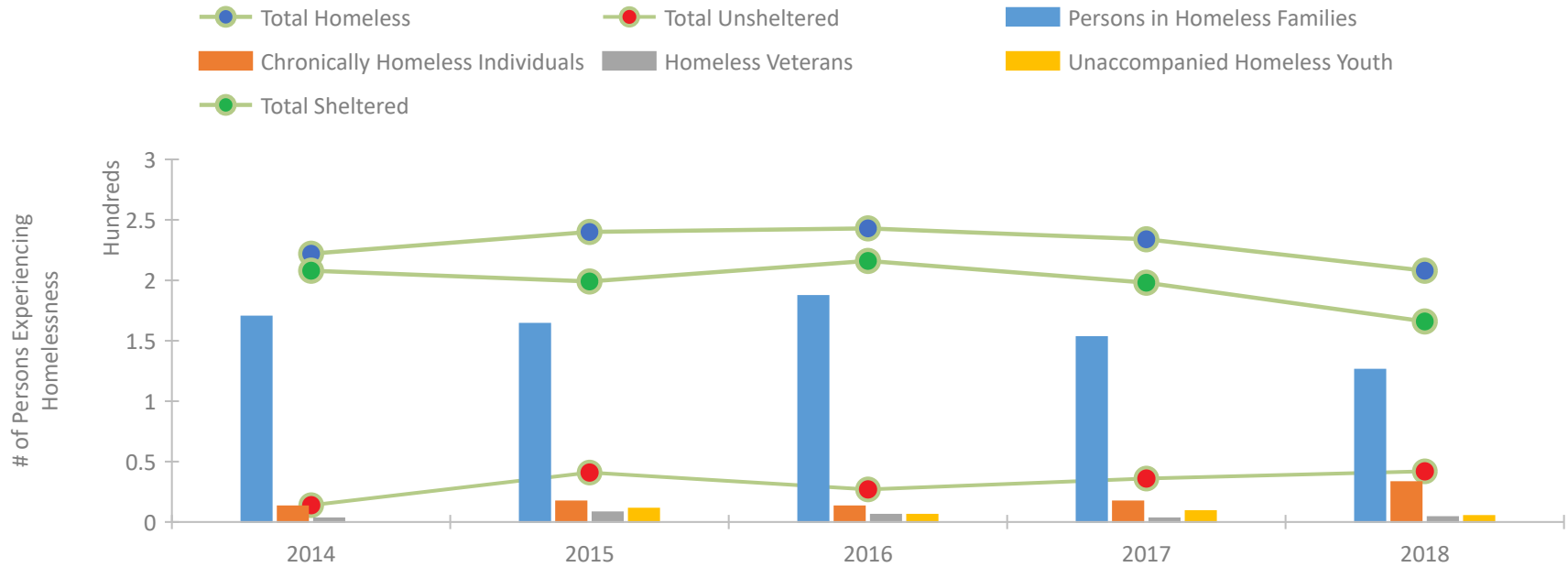
CoC Performance Profile MA-519 Attleboro, Taunton/Bristol County CoC



Housing Inventory Count by Program Type

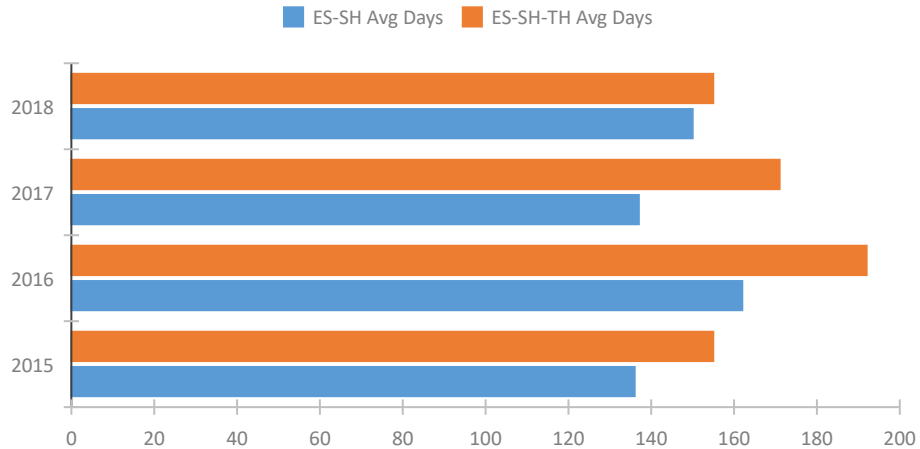


Homeless Population – Point-in-Time (PIT) Count

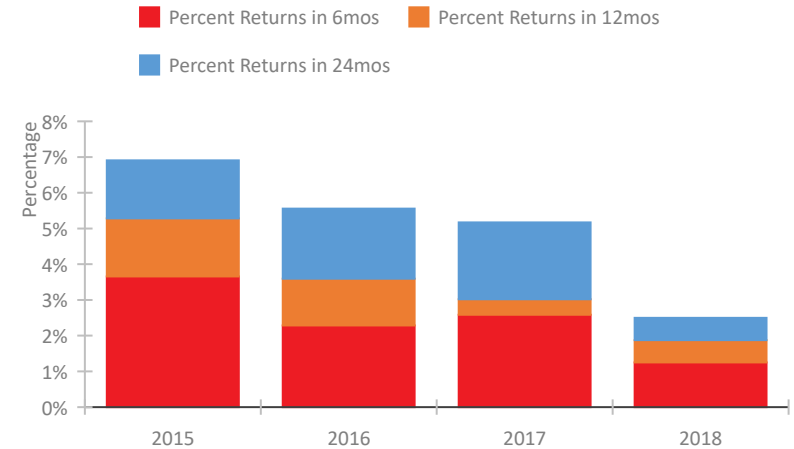


CoC Performance Profile MA-519 Attleboro, Taunton/Bristol County CoC

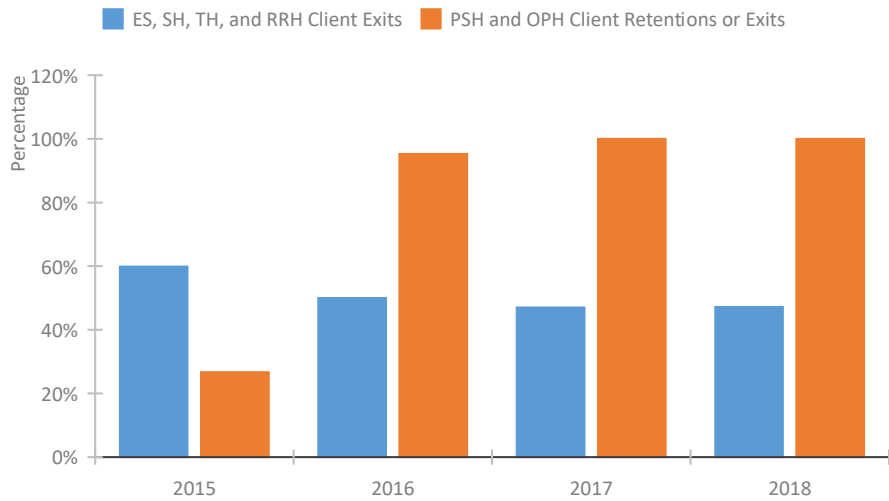
Length of Time Homeless



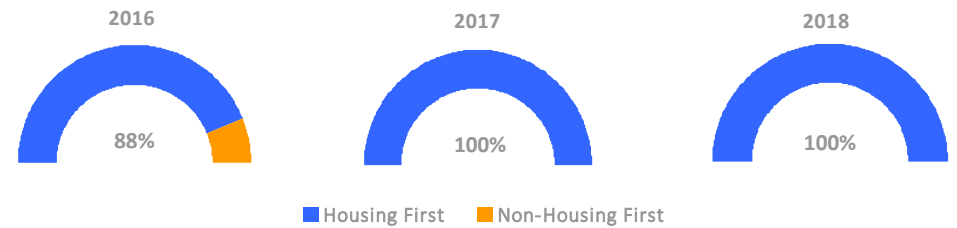
Returns to Homelessness Over Time



Exits to Permanent Housing by Program Type



Proportion of Housing First Projects by Year



Number of Projects by Year

	2016	2017	2018
Housing First Projects	7	7	7
Non-Housing First Projects	1	0	0

Data Summary: MA-519 Attleboro, Taunton/Bristol County CoC

Point-In-Time Count Summary

	2014	2015	2016	2017	2018	2017-18 Change	% Change
Number of Sheltered Persons in Families	170	164	187	153	126	-27	-18%
Number of Unsheltered Persons in Families	0	0	0	0	0	0	--
Number of Sheltered Individuals	38	35	29	45	40	-5	-11%
Number of Unsheltered Individuals	14	41	27	36	42	6	17%
Total Homeless Persons	222	240	243	234	208	-26	-11%
Number of Sheltered Families	52	45	55	40	34	-6	-15%
Number of Unsheltered Families	0	0	0	0	0	0	--
Number of Total Families	52	45	55	40	34	-6	-15%
Sheltered Chronically Homeless Individuals	7	7	1	2	8	6	300%
Unsheltered Chronically Homeless Individuals	6	10	12	15	25	10	67%
Total Chronically Homeless Individuals	13	17	13	17	33	16	94%
Sheltered Veterans	3	5	1	3	1	-2	-67%
Unsheltered Veterans	0	3	5	0	3	3	100%
Total Veterans	3	8	6	3	4	1	33%
Sheltered Unaccompanied Youth (up to 24)	--	10	1	3	2	-1	-33%
Unsheltered Unaccompanied Youth (up to 24)	--	1	5	6	3	-3	-50%
Total Unaccompanied Youth (up to 24)	--	11	6	9	5	-4	-44%

System Performance Measures Summary

	2014	2015	2016	2017	2018	2017-18 Change	% Change
Average Length of Time Homeless (days)	N/A	155	192	171	155	-16	-9.4%
Rate People Return to Homelessness in 6 Months	N/A	3.7%	2.3%	2.6%	1.3%	-1.3%	N/A
Number of People who are Homeless for the First Time	N/A	60	282	400	216	-184	-46%
Rate People Exit from ES, SH, TH, and RRH to PH	N/A	59.8%	50.0%	47.0%	47.2%	0.1%	N/A
Rate People in PSH and OPH Retain or Exit to PH	N/A	26.7%	95.2%	100.0%	100.0%	0%	N/A

Housing Inventory Count Summary

	2014	2015	2016	2017	2018	2017-18 Change	% Change
Emergency Shelter (ES)	170	170	170	170	170	0	0%
Transitional Housing (TH)	76	73	73	55	50	-5	-9%
Permanent Supportive Housing (PSH)	86	90	90	79	79	0	0%
Other Permanent Housing (OPH)	--	--	--	6	8	2	33%

Award Summary

	2014	2015	2016	2017	2018	2017-18 Change	% Change
Continuum of Care (CoC)	\$925,047	\$819,144	\$798,948	\$809,318	\$820,990	\$11,672	1%
ESG (MA state recipient - no direct funding)	\$4,116,938	\$4,485,180	\$4,498,628	\$5,225,151	\$4,414,916	(\$810,235)	-16%