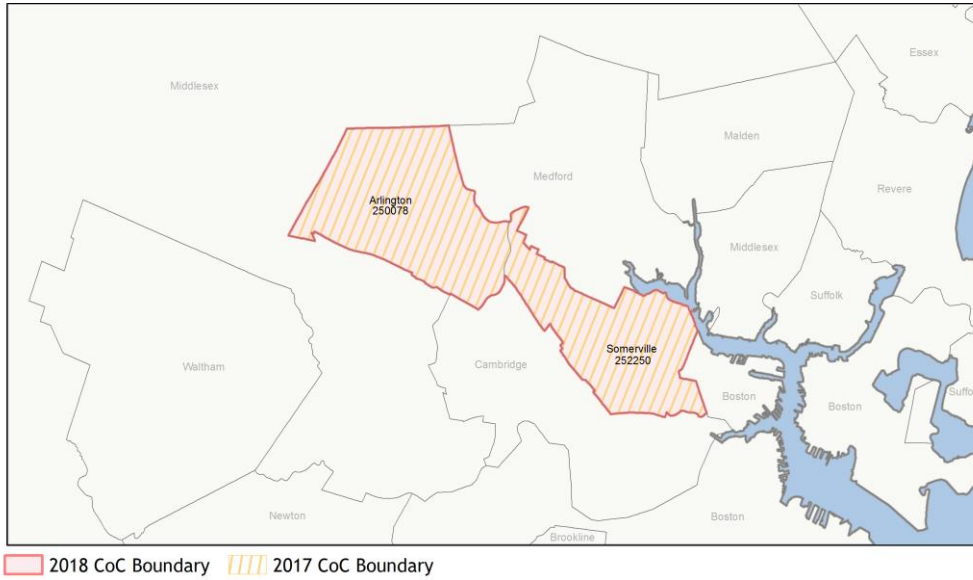
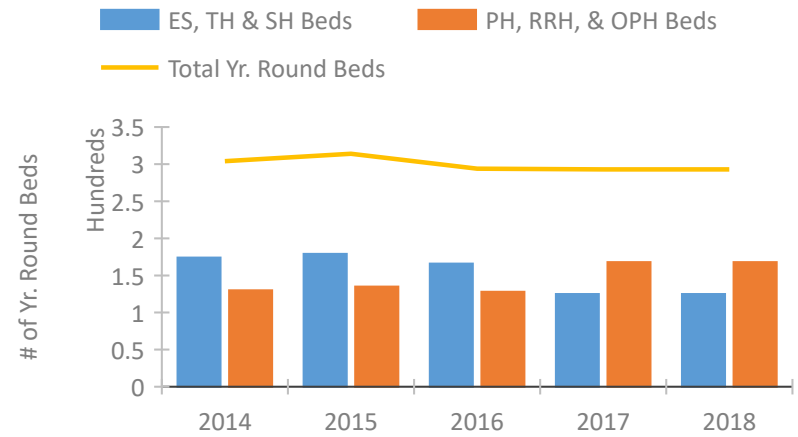


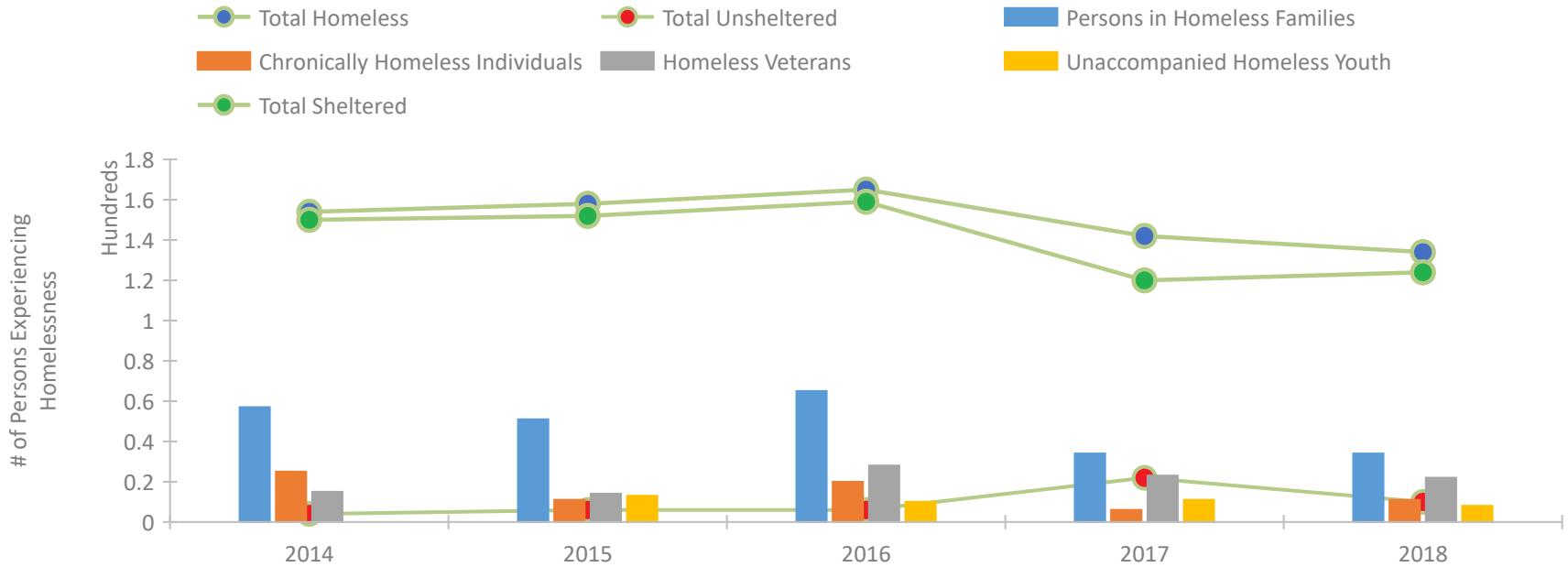
CoC Performance Profile MA-517 Somerville CoC



Housing Inventory Count by Program Type

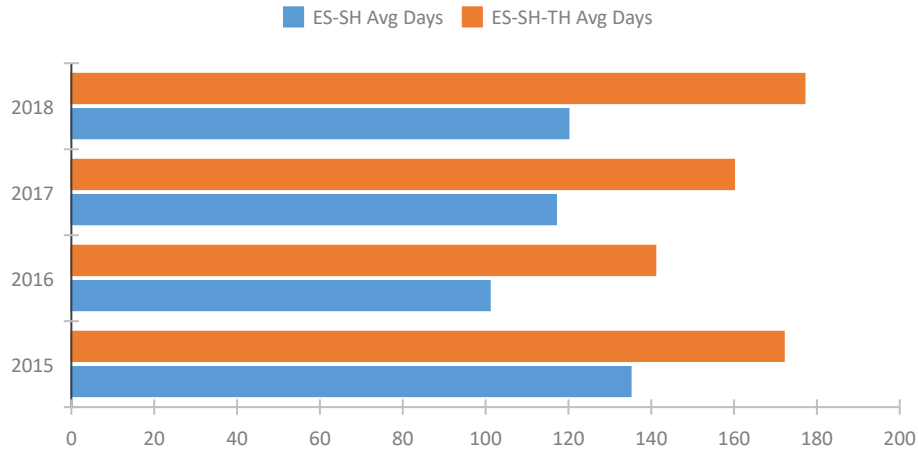


Homeless Population – Point-in-Time (PIT) Count

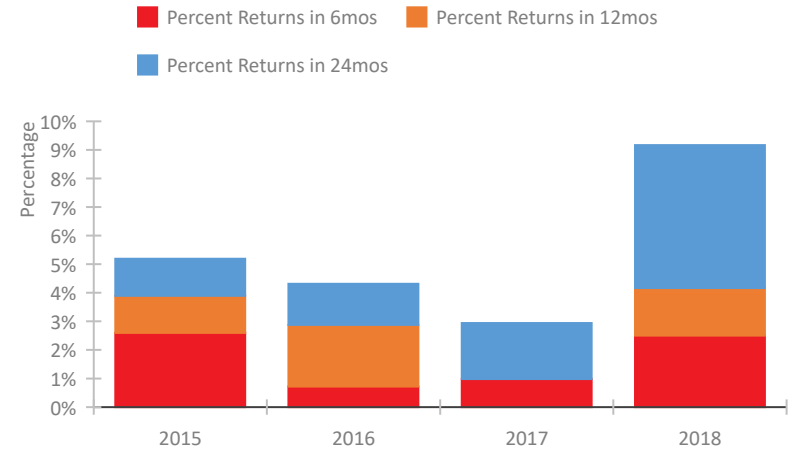


CoC Performance Profile MA-517 Somerville CoC

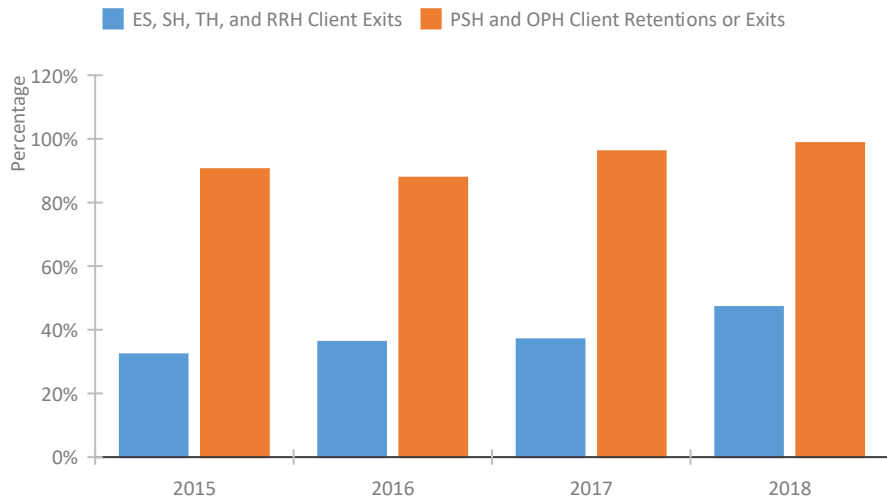
Length of Time Homeless



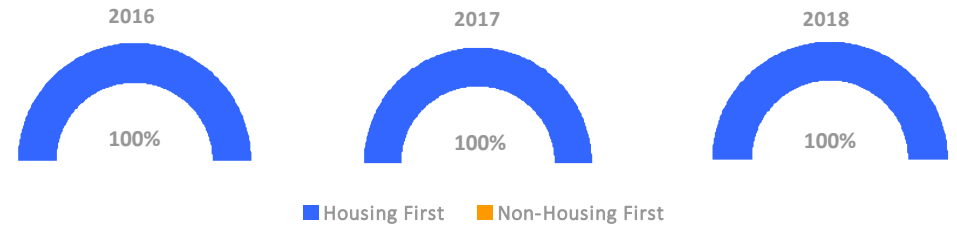
Returns to Homelessness Over Time



Exits to Permanent Housing by Program Type



Proportion of Housing First Projects by Year



Number of Projects by Year

	2016	2017	2018
Housing First Projects	11	9	10
Non-Housing First Projects	0	0	0

Data Summary: MA-517 Somerville CoC

Point-In-Time Count Summary

	2014	2015	2016	2017	2018	2017-18 Change	% Change
Number of Sheltered Persons in Families	57	51	65	34	34	0	0%
Number of Unsheltered Persons in Families	0	0	0	0	0	0	--
Number of Sheltered Individuals	93	101	94	86	90	4	5%
Number of Unsheltered Individuals	4	6	6	22	10	-12	-55%
Total Homeless Persons	154	158	165	142	134	-8	-6%
Number of Sheltered Families	22	21	19	13	14	1	8%
Number of Unsheltered Families	0	0	0	0	0	0	--
Number of Total Families	22	21	19	13	14	1	8%
Sheltered Chronically Homeless Individuals	21	5	14	6	11	5	83%
Unsheltered Chronically Homeless Individuals	4	6	6	0	0	0	--
Total Chronically Homeless Individuals	25	11	20	6	11	5	83%
Sheltered Veterans	15	14	28	23	22	-1	-4%
Unsheltered Veterans	0	0	0	0	0	0	--
Total Veterans	15	14	28	23	22	-1	-4%
Sheltered Unaccompanied Youth (up to 24)	--	13	10	11	8	-3	-27%
Unsheltered Unaccompanied Youth (up to 24)	--	0	0	0	0	0	--
Total Unaccompanied Youth (up to 24)	--	13	10	11	8	-3	-27%

System Performance Measures Summary

	2014	2015	2016	2017	2018	2017-18 Change	% Change
Average Length of Time Homeless (days)	N/A	172	141	160	177	17	10.6%
Rate People Return to Homelessness in 6 Months	N/A	2.6%	0.7%	1.0%	2.5%	1.5%	N/A
Number of People who are Homeless for the First Time	N/A	258	286	262	209	-53	-20.2%
Rate People Exit from ES, SH, TH, and RRH to PH	N/A	32.3%	36.2%	37.0%	47.1%	10.1%	N/A
Rate People in PSH and OPH Retain or Exit to PH	N/A	90.5%	87.8%	96.1%	98.7%	2.6%	N/A

Housing Inventory Count Summary

	2014	2015	2016	2017	2018	2017-18 Change	% Change
Emergency Shelter (ES)	111	107	106	78	78	0	0%
Transitional Housing (TH)	63	72	60	47	47	0	0%
Permanent Supportive Housing (PSH)	130	95	110	126	128	2	2%
Rapid Re-Housing (RRH)	--	--	--	9	6	-3	-33%
Other Permanent Housing (OPH)	--	40	18	33	34	1	3%

Award Summary

	2014	2015	2016	2017	2018	2017-18 Change	% Change
Continuum of Care (CoC)	\$2,125,646	\$1,925,107	\$1,922,372	\$1,921,025	\$1,960,519	\$39,494	2%
Emergency Solutions Grants (ESG)	\$202,284	\$211,564	\$203,461	\$423,647	\$202,461	(\$221,186)	-52%