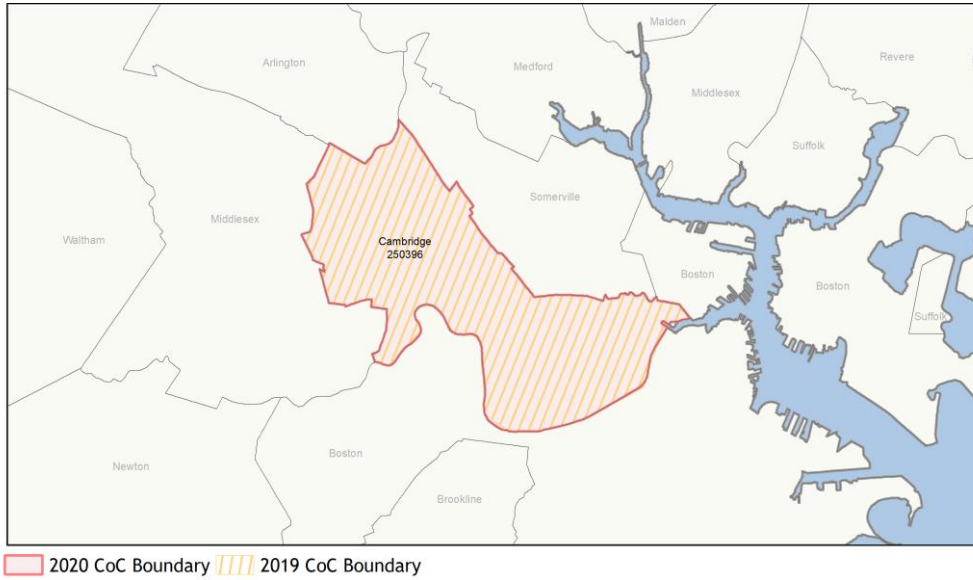
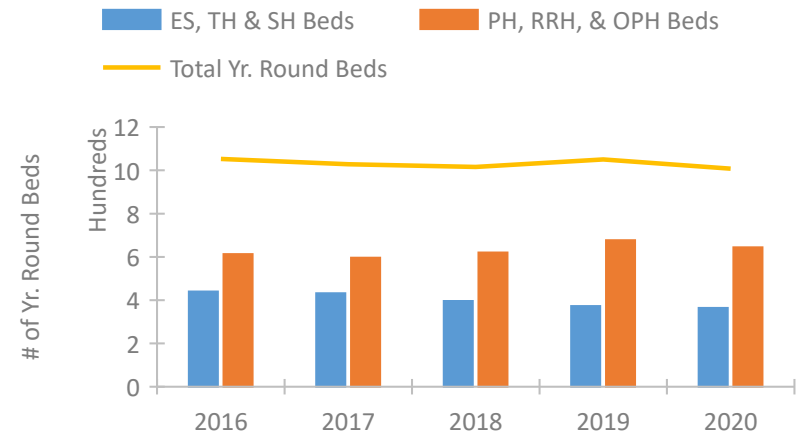


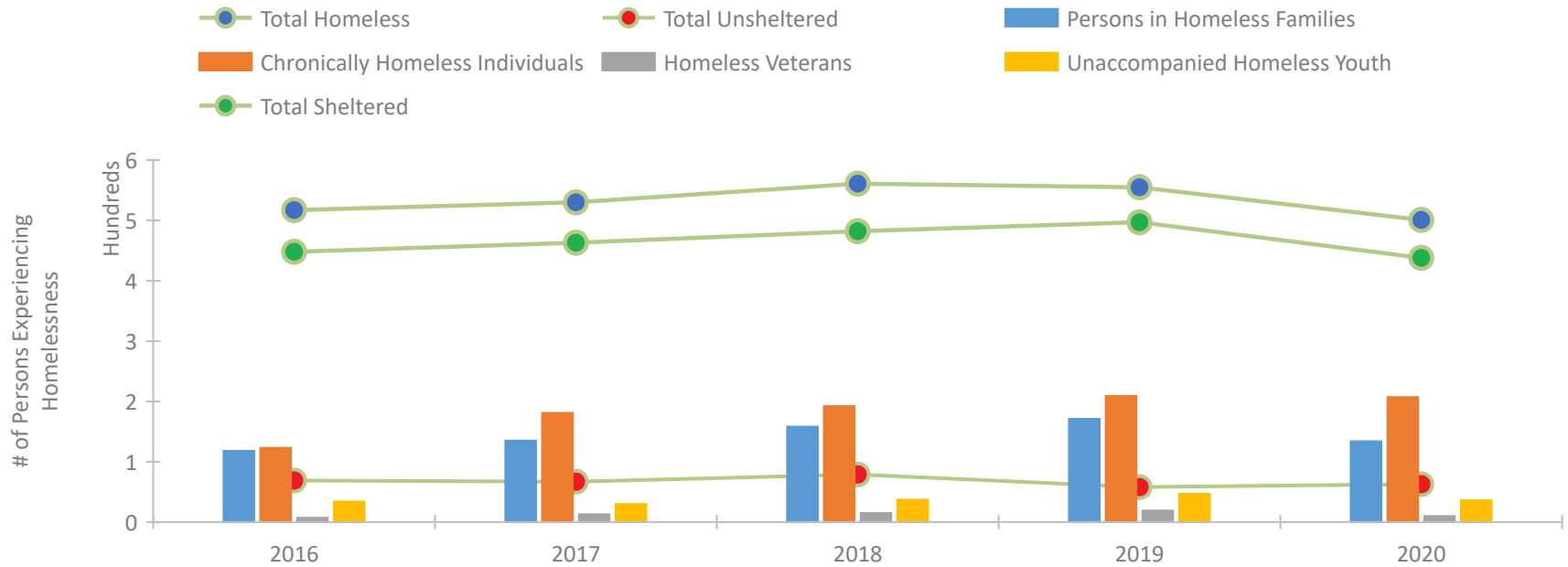
## CoC Performance Profile MA-509 Cambridge CoC



### Housing Inventory Count by Program Type

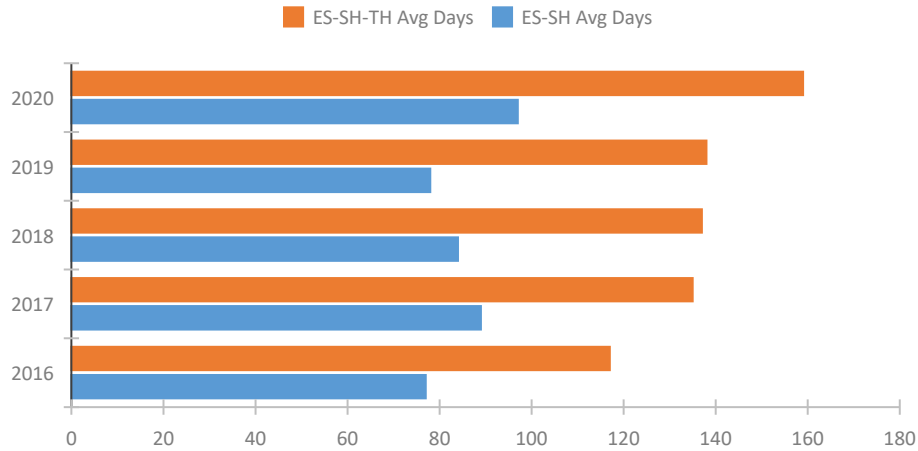


### Homeless Population – Point-in-Time (PIT) Count

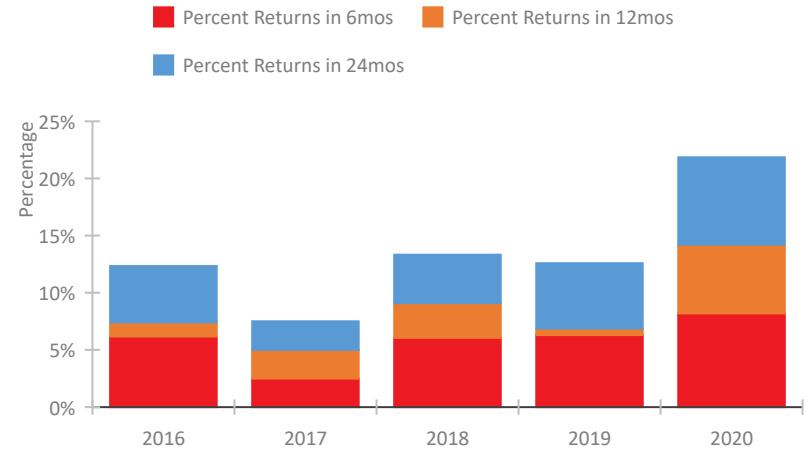


## CoC Performance Profile MA-509 Cambridge CoC

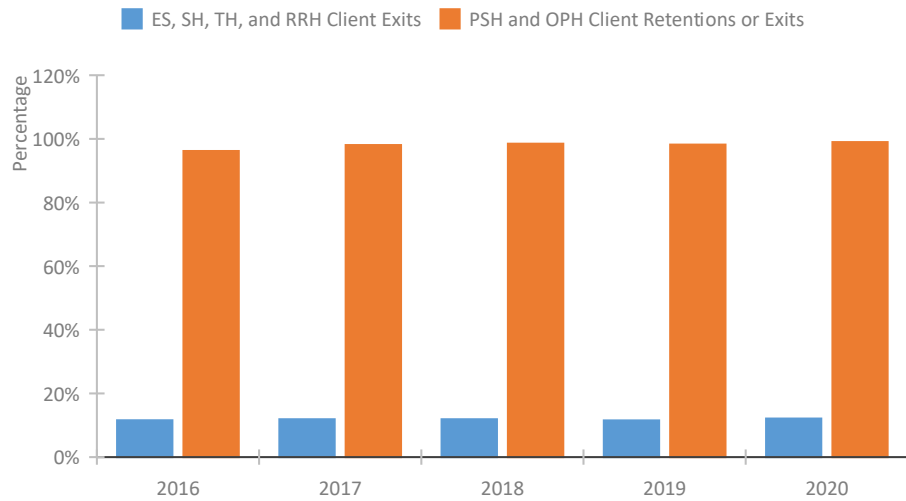
### Length of Time Homeless



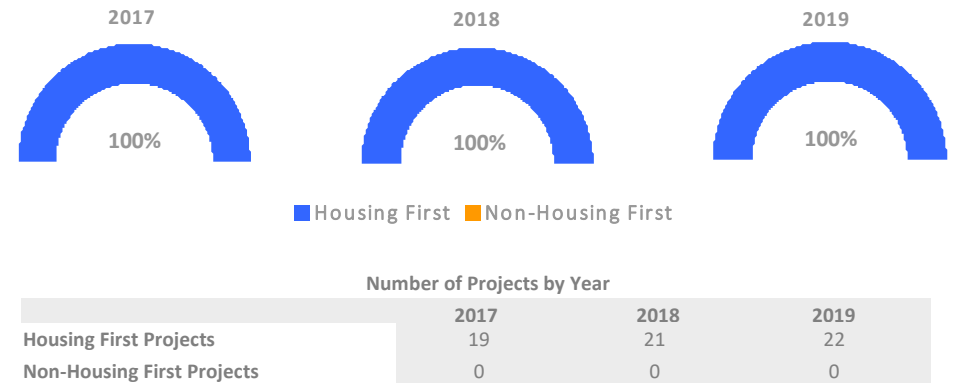
### Returns to Homelessness Over Time



### Exits to Permanent Housing by Program Type



### Proportion of Housing First Projects by Year\*



\*In 2020 HUD awarded renewal projects noncompetitively, therefore no new data was collected and Housing First data remains the same from 2019 to 2020.

## Data Summary: MA-509 Cambridge CoC

### Point-In-Time Count Summary

	2016	2017	2018	2019	2020	2019-20 Change	% Change
Number of Sheltered Persons in Families	118	135	158	171	134	-37	-22%
Number of Unsheltered Persons in Families	0	0	0	0	0	0	--
Number of Sheltered Individuals	330	328	324	326	304	-22	-7%
Number of Unsheltered Individuals	69	67	79	58	63	5	9%
<b>Total Homeless Persons</b>	<b>517</b>	<b>530</b>	<b>561</b>	<b>555</b>	<b>501</b>	<b>-54</b>	<b>-10%</b>
Number of Sheltered Families	46	52	60	65	49	-16	-25%
Number of Unsheltered Families	0	0	0	0	0	0	--
<b>Number of Total Families</b>	<b>46</b>	<b>52</b>	<b>60</b>	<b>65</b>	<b>49</b>	<b>-16</b>	<b>-25%</b>
Sheltered Chronically Homeless Individuals	54	155	157	172	165	-7	-4%
Unsheltered Chronically Homeless Individuals	69	26	35	37	42	5	14%
<b>Total Chronically Homeless Individuals</b>	<b>123</b>	<b>181</b>	<b>192</b>	<b>209</b>	<b>207</b>	<b>-2</b>	<b>-1%</b>
Sheltered Veterans	7	9	10	17	7	-10	-59%
Unsheltered Veterans	0	4	5	2	3	1	50%
<b>Total Veterans</b>	<b>7</b>	<b>13</b>	<b>15</b>	<b>19</b>	<b>10</b>	<b>-9</b>	<b>-47%</b>
Sheltered Unaccompanied Youth (up to 24)	31	28	29	34	31	-3	-9%
Unsheltered Unaccompanied Youth (up to 24)	3	2	8	13	5	-8	-62%
<b>Total Unaccompanied Youth (up to 24)</b>	<b>34</b>	<b>30</b>	<b>37</b>	<b>47</b>	<b>36</b>	<b>-11</b>	<b>-23%</b>

### System Performance Measures Summary

	2016	2017	2018	2018	2020	2019-20 Change	% Change
Average Length of Time Homeless (days)	117	135	137	138	159	21	15.2%
Rate People Return to Homelessness in 6 Months	6.2%	2.5%	6.1%	6.3%	8.2%	1.9%	N/A
Number of People who are Homeless for the First Time	757	749	881	978	650	-328	-33.5%
Rate People Exit from ES, SH, TH, and RRH to PH	11.5%	11.9%	11.9%	11.5%	12.1%	0.6%	N/A
Rate People in PSH and OPH Retain or Exit to PH	96.2%	98.0%	98.5%	98.2%	99.0%	0.8%	N/A

### Housing Inventory Count Summary

	2016	2017	2018	2019	2020	2019-20 Change	% Change
Emergency Shelter (ES)	270	259	237	237	247	10	4%
Transitional Housing (TH)	170	173	159	136	117	-19	-14%
Permanent Supportive Housing (PSH)	422	422	472	488	480	-8	-2%
Rapid Re-Housing (RRH)	26	22	25	49	46	-3	-6%
Other Permanent Housing (OPH)	165	152	123	140	118	-22	-16%

### Award Summary

	2016	2017	2018	2019	2020	2019-20 Change	% Change
<b>Continuum of Care (CoC)</b>	\$4,141,665	\$4,443,240	\$4,701,678	\$4,994,743	\$5,859,232	\$864,489	17%
<b>Emergency Solutions Grants (ESG)</b>	\$226,064	\$222,893	\$220,976	\$226,672	\$228,505	\$1,833	1%