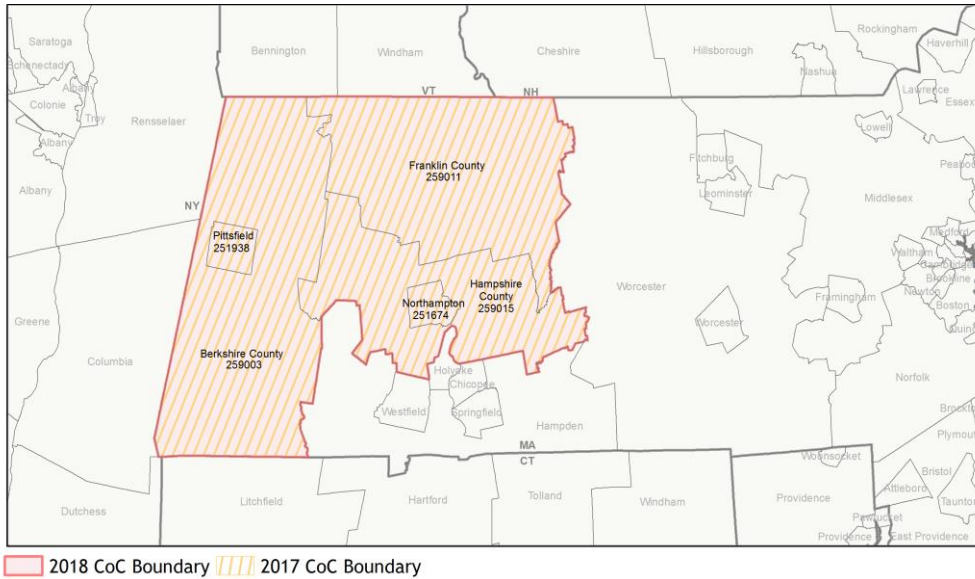
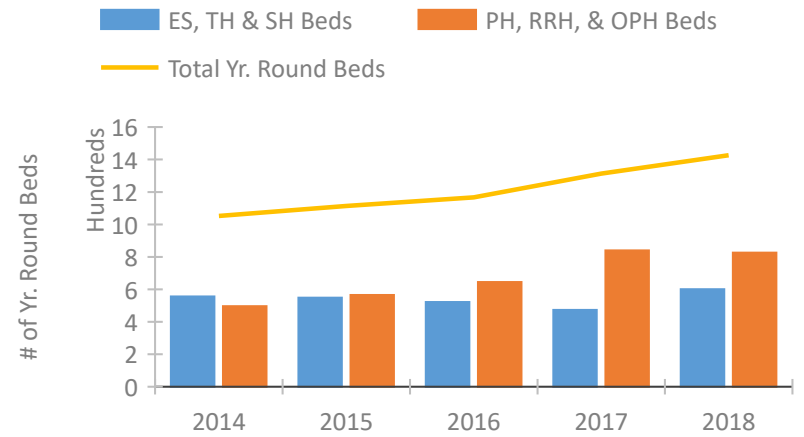


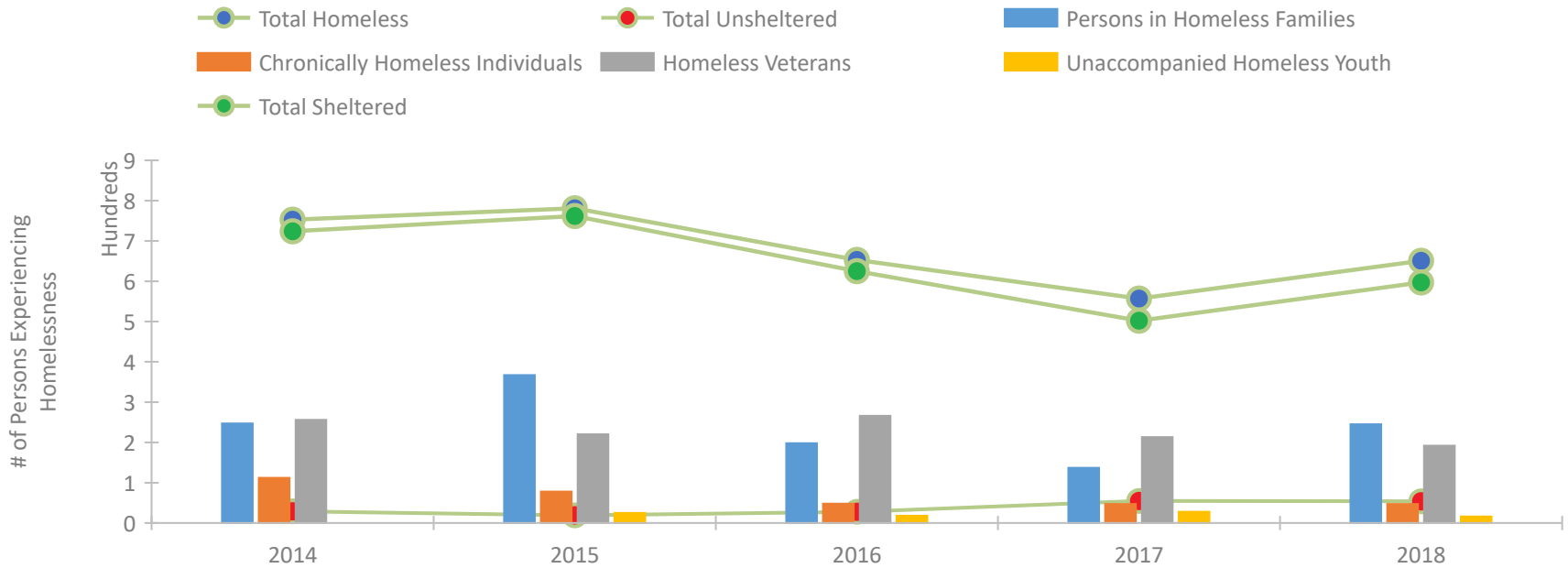
## CoC Performance Profile MA-507 Pittsfield/Berkshire, Franklin, Hampshire Counties CoC



### Housing Inventory Count by Program Type

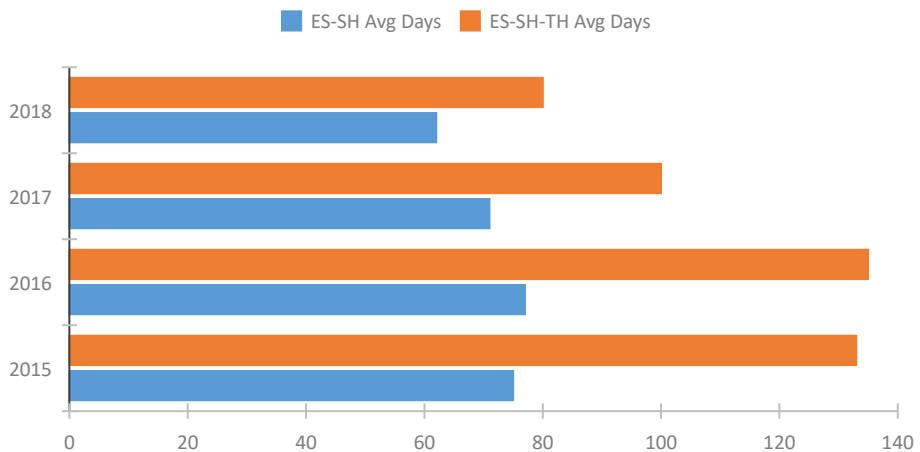


### Homeless Population – Point-in-Time (PIT) Count

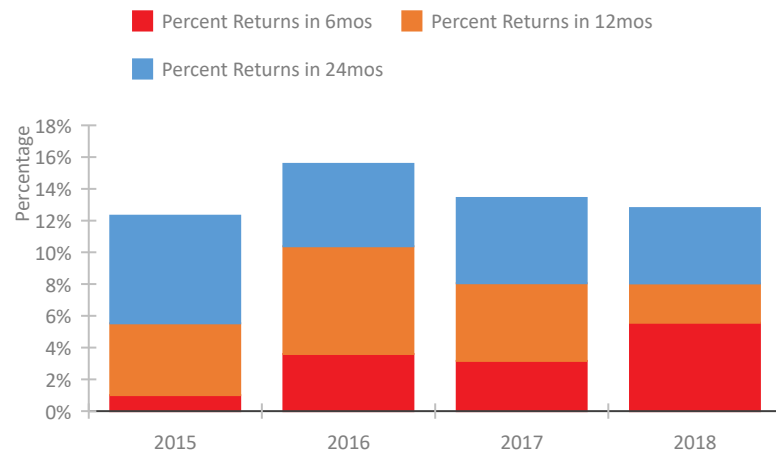


## CoC Performance Profile MA-507 Pittsfield/Berkshire, Franklin, Hampshire Counties CoC

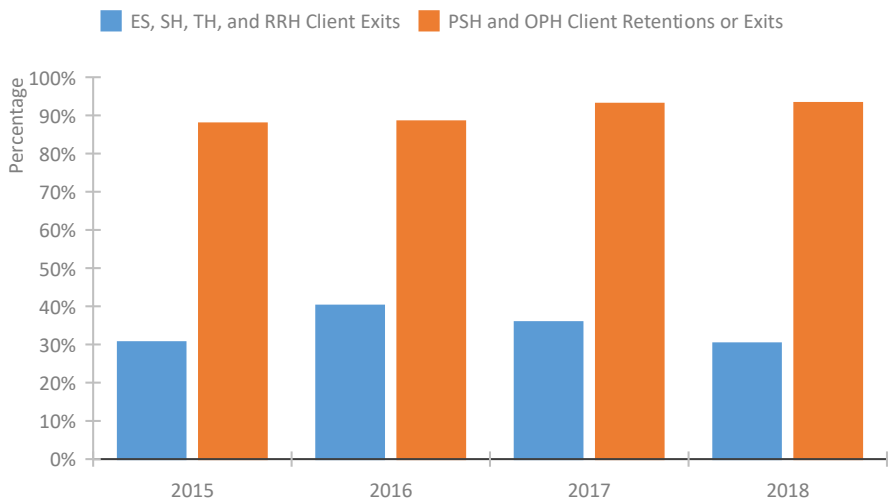
### Length of Time Homeless



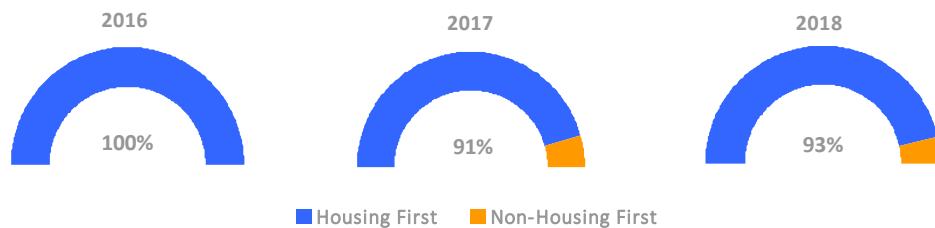
### Returns to Homelessness Over Time



### Exits to Permanent Housing by Program Type



### Proportion of Housing First Projects by Year



#### Number of Projects by Year

	2016	2017	2018
Housing First Projects	12	10	13
Non-Housing First Projects	0	1	1

## Data Summary: MA-507 Pittsfield/Berkshire, Franklin, Hampshire Counties CoC

### Point-In-Time Count Summary

	2014	2015	2016	2017	2018	2017-18 Change	% Change
Number of Sheltered Persons in Families	247	367	198	137	245	108	79%
Number of Unsheltered Persons in Families	0	0	0	0	0	0	--
Number of Sheltered Individuals	477	395	427	365	352	-13	-4%
Number of Unsheltered Individuals	29	19	28	55	54	-1	-2%
<b>Total Homeless Persons</b>	<b>753</b>	<b>781</b>	<b>653</b>	<b>557</b>	<b>651</b>	<b>94</b>	<b>17%</b>
Number of Sheltered Families	84	122	57	41	66	25	61%
Number of Unsheltered Families	0	0	0	0	0	0	--
<b>Number of Total Families</b>	<b>84</b>	<b>122</b>	<b>57</b>	<b>41</b>	<b>66</b>	<b>25</b>	<b>61%</b>
Sheltered Chronically Homeless Individuals	95	66	36	18	42	24	133%
Unsheltered Chronically Homeless Individuals	17	12	12	29	5	-24	-83%
<b>Total Chronically Homeless Individuals</b>	<b>112</b>	<b>78</b>	<b>48</b>	<b>47</b>	<b>47</b>	<b>0</b>	<b>0%</b>
Sheltered Veterans	256	220	265	209	188	-21	-10%
Unsheltered Veterans	0	0	1	4	4	0	0%
<b>Total Veterans</b>	<b>256</b>	<b>220</b>	<b>266</b>	<b>213</b>	<b>192</b>	<b>-21</b>	<b>-10%</b>
Sheltered Unaccompanied Youth (up to 24)	--	24	17	22	11	-11	-50%
Unsheltered Unaccompanied Youth (up to 24)	--	1	1	6	5	-1	-17%
<b>Total Unaccompanied Youth (up to 24)</b>	<b>--</b>	<b>25</b>	<b>18</b>	<b>28</b>	<b>16</b>	<b>-12</b>	<b>-43%</b>

### System Performance Measures Summary

	2014	2015	2016	2017	2018	2017-18 Change	% Change
Average Length of Time Homeless (days)	N/A	133	135	100	80	-20	-20%
Rate People Return to Homelessness in 6 Months	N/A	1.0%	3.6%	3.2%	5.6%	2.4%	N/A
Number of People who are Homeless for the First Time	N/A	1344	1199	1165	1248	83	7.1%
Rate People Exit from ES, SH, TH, and RRH to PH	N/A	30.6%	40.2%	35.9%	30.3%	-5.6%	N/A
Rate People in PSH and OPH Retain or Exit to PH	N/A	87.9%	88.4%	93.0%	93.3%	0.2%	N/A

### Housing Inventory Count Summary

	2014	2015	2016	2017	2018	2017-18 Change	% Change
Emergency Shelter (ES)	176	201	218	219	328	109	50%
Transitional Housing (TH)	380	348	304	254	273	19	7%
Permanent Supportive Housing (PSH)	420	492	545	635	534	-101	-16%
Rapid Re-Housing (RRH)	--	14	5	110	181	71	65%
Other Permanent Housing (OPH)	76	59	95	95	111	16	17%

### Award Summary

	2014	2015	2016	2017	2018	2017-18 Change	% Change
<b>Continuum of Care (CoC)</b>	\$1,623,001	\$1,797,223	\$1,571,830	\$1,709,231	\$1,805,851	\$96,620	6%
<b>ESG (MA state recipient - no direct funding)</b>	\$4,116,938	\$4,485,180	\$4,498,628	\$5,225,151	\$4,414,916	(\$810,235)	-16%
<b>Youth Homelessness Demonstration Program (YHDP)</b>	N/A	N/A	--	--	\$1,958,837	--	--