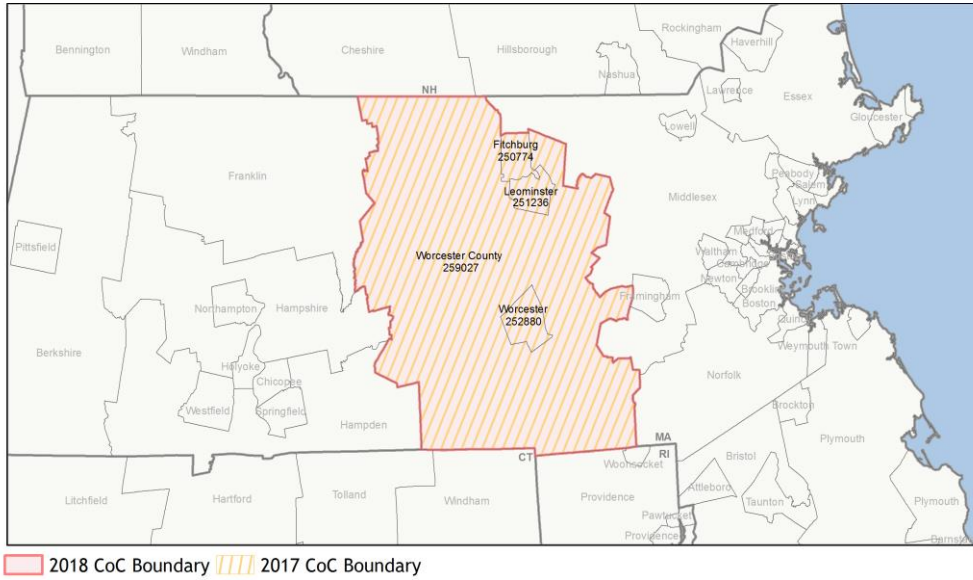
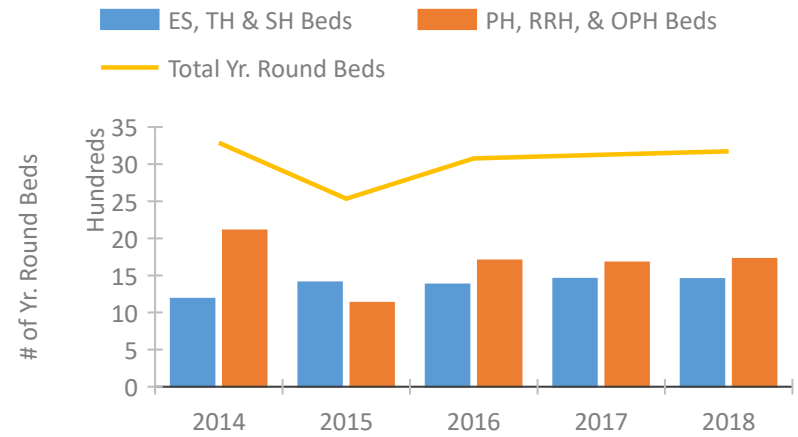


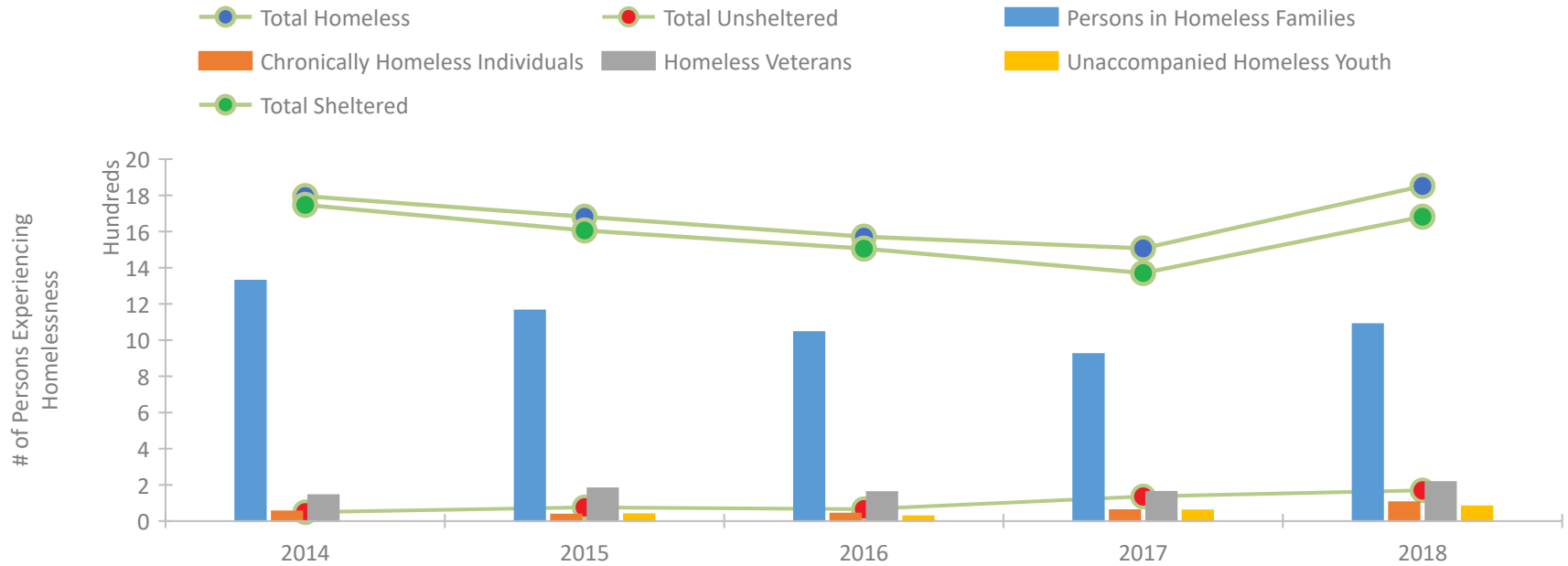
## CoC Performance Profile MA-506 Worcester City & County CoC



### Housing Inventory Count by Program Type

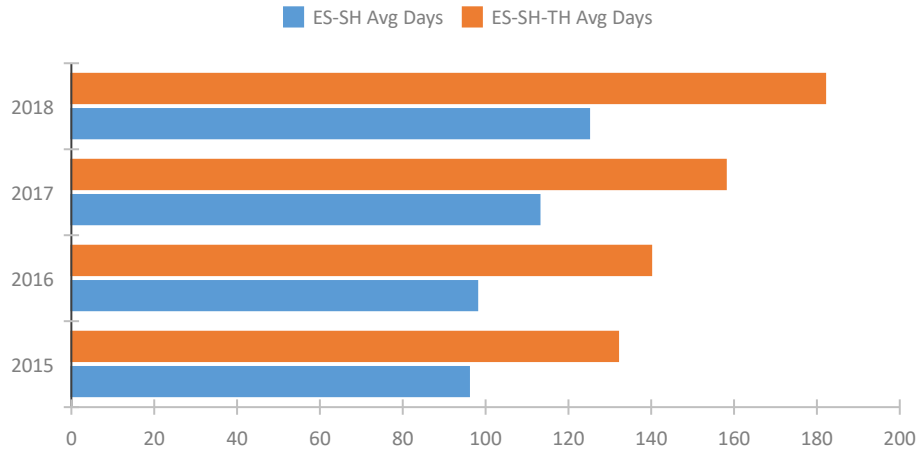


### Homeless Population – Point-in-Time (PIT) Count

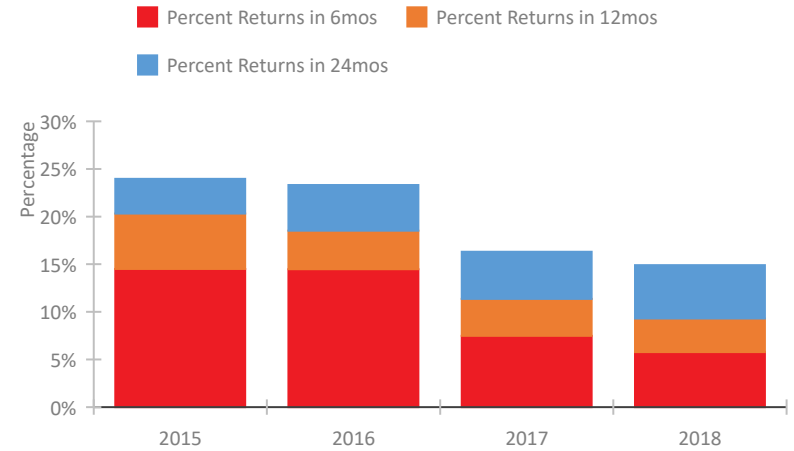


## CoC Performance Profile MA-506 Worcester City & County CoC

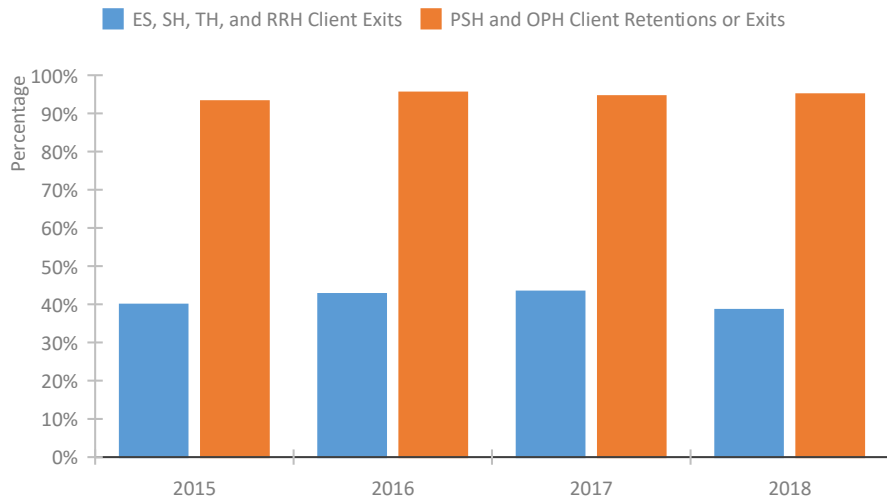
### Length of Time Homeless



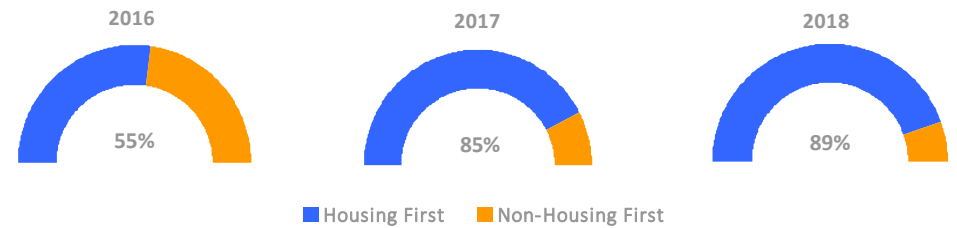
### Returns to Homelessness Over Time



### Exits to Permanent Housing by Program Type



### Proportion of Housing First Projects by Year



#### Number of Projects by Year

	2016	2017	2018
Housing First Projects	12	17	17
Non-Housing First Projects	10	3	2

## Data Summary: MA-506 Worcester City & County CoC

### Point-In-Time Count Summary

	2014	2015	2016	2017	2018	2017-18 Change	% Change
Number of Sheltered Persons in Families	1,325	1,160	1,044	917	1,088	171	19%
Number of Unsheltered Persons in Families	3	4	0	6	0	-6	-100%
Number of Sheltered Individuals	422	446	462	454	594	140	31%
Number of Unsheltered Individuals	46	72	66	130	170	40	31%
<b>Total Homeless Persons</b>	<b>1,796</b>	<b>1,682</b>	<b>1,572</b>	<b>1,507</b>	<b>1,852</b>	<b>345</b>	<b>23%</b>
Number of Sheltered Families	394	363	311	279	321	42	15%
Number of Unsheltered Families	1	2	0	3	0	-3	-100%
<b>Number of Total Families</b>	<b>395</b>	<b>365</b>	<b>311</b>	<b>282</b>	<b>321</b>	<b>39</b>	<b>14%</b>
Sheltered Chronically Homeless Individuals	34	15	27	25	41	16	64%
Unsheltered Chronically Homeless Individuals	19	21	14	35	63	28	80%
<b>Total Chronically Homeless Individuals</b>	<b>53</b>	<b>36</b>	<b>41</b>	<b>60</b>	<b>104</b>	<b>44</b>	<b>73%</b>
Sheltered Veterans	142	178	159	154	206	52	34%
Unsheltered Veterans	1	3	1	7	9	2	29%
<b>Total Veterans</b>	<b>143</b>	<b>181</b>	<b>160</b>	<b>161</b>	<b>215</b>	<b>54</b>	<b>34%</b>
Sheltered Unaccompanied Youth (up to 24)	--	36	23	49	60	11	22%
Unsheltered Unaccompanied Youth (up to 24)	--	2	3	10	21	11	110%
<b>Total Unaccompanied Youth (up to 24)</b>	<b>--</b>	<b>38</b>	<b>26</b>	<b>59</b>	<b>81</b>	<b>22</b>	<b>37%</b>

### System Performance Measures Summary

	2014	2015	2016	2017	2018	2017-18 Change	% Change
Average Length of Time Homeless (days)	N/A	132	140	158	182	24	15.2%
Rate People Return to Homelessness in 6 Months	N/A	14.5%	14.5%	7.5%	5.8%	-1.7%	N/A
Number of People who are Homeless for the First Time	N/A	2625	2767	2778	2605	-173	-6.2%
Rate People Exit from ES, SH, TH, and RRH to PH	N/A	39.9%	42.7%	43.3%	38.5%	-4.8%	N/A
Rate People in PSH and OPH Retain or Exit to PH	N/A	93.2%	95.5%	94.5%	95.0%	0.5%	N/A

### Housing Inventory Count Summary

	2014	2015	2016	2017	2018	2017-18 Change	% Change
Emergency Shelter (ES)	757	896	874	923	946	23	2%
Safe Haven (SH)	13	13	13	13	13	0	0%
Transitional Housing (TH)	414	496	490	518	492	-26	-5%
Permanent Supportive Housing (PSH)	1,003	912	894	940	925	-15	-2%
Rapid Re-Housing (RRH)	1,102	218	767	686	755	69	10%
Other Permanent Housing (OPH)	--	--	40	47	42	-5	-11%

### Award Summary

	2014	2015	2016	2017	2018	2017-18 Change	% Change
<b>Continuum of Care (CoC)</b>	\$6,487,801	\$6,595,065	\$6,357,364	\$6,380,237	\$6,737,485	\$357,248	6%
<b>Emergency Solutions Grants (ESG)</b>	\$341,311	\$366,487	\$363,513	\$627,242	\$355,942	(\$271,300)	-43%