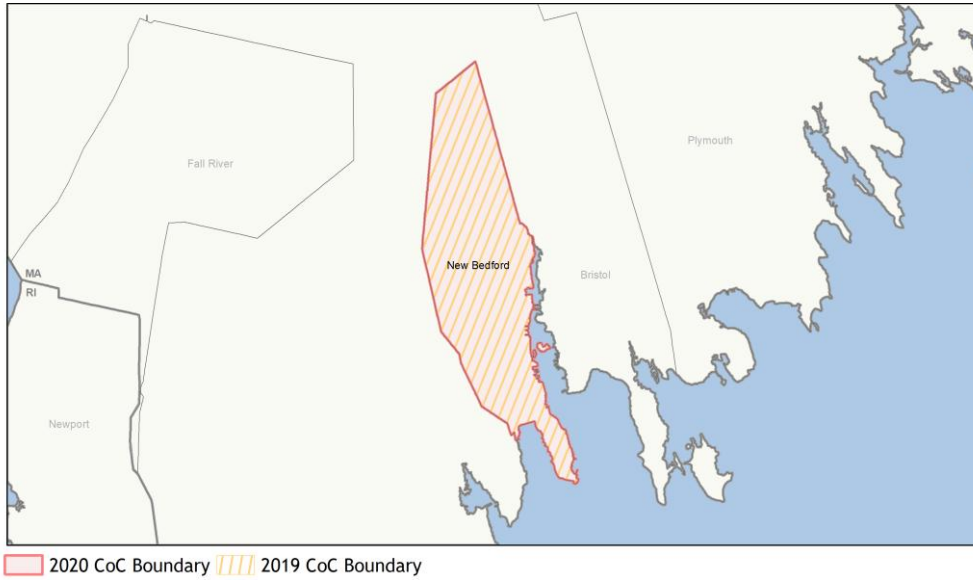
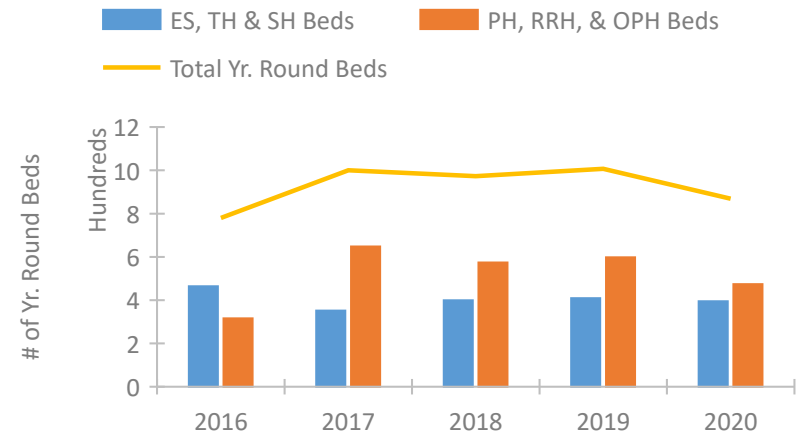


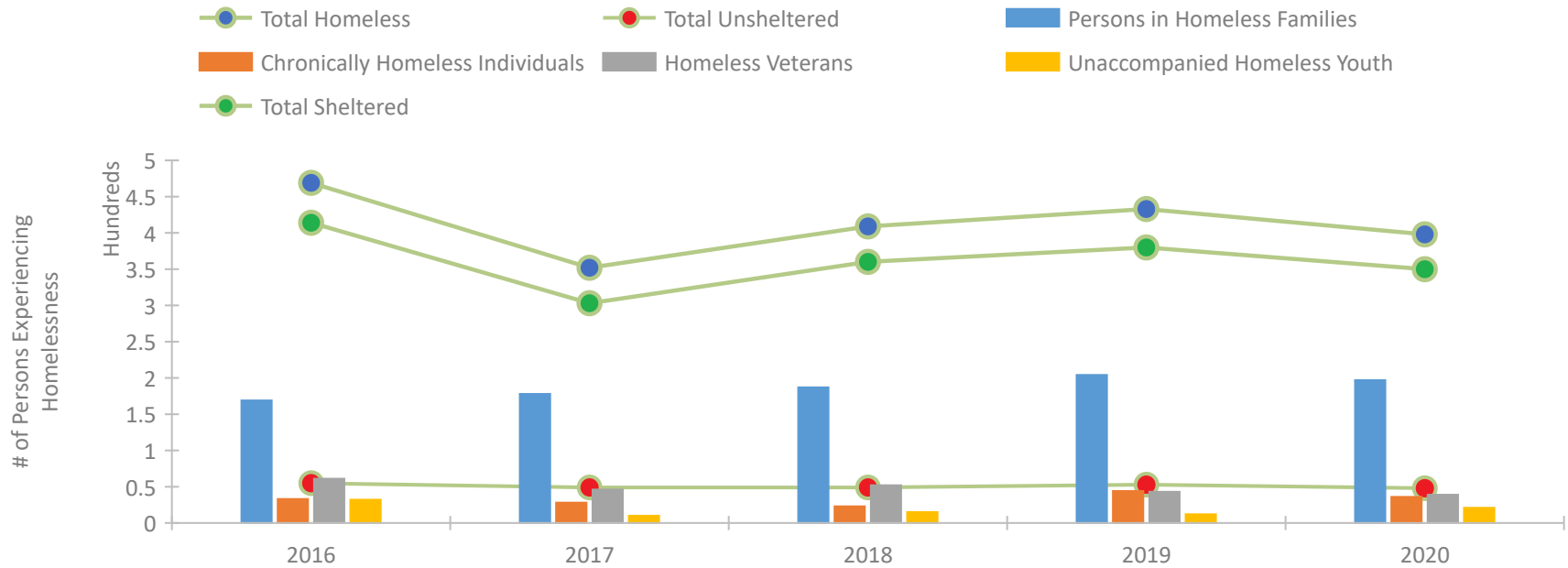
CoC Performance Profile MA-505 New Bedford CoC



Housing Inventory Count by Program Type

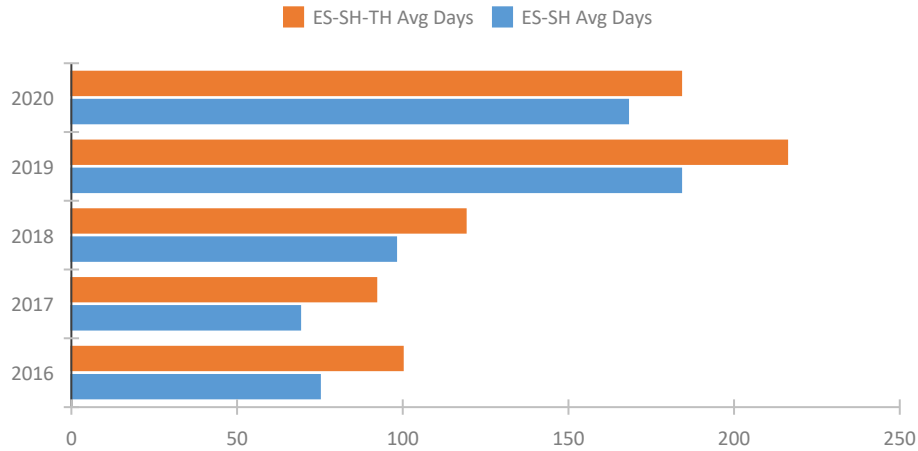


Homeless Population – Point-in-Time (PIT) Count

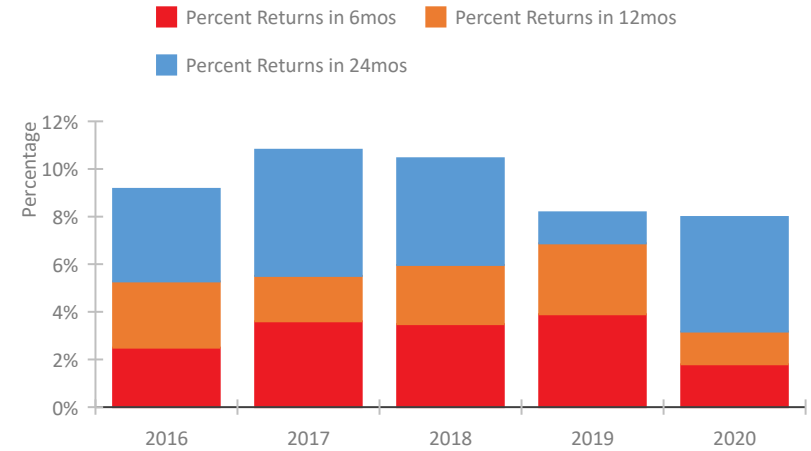


CoC Performance Profile MA-505 New Bedford CoC

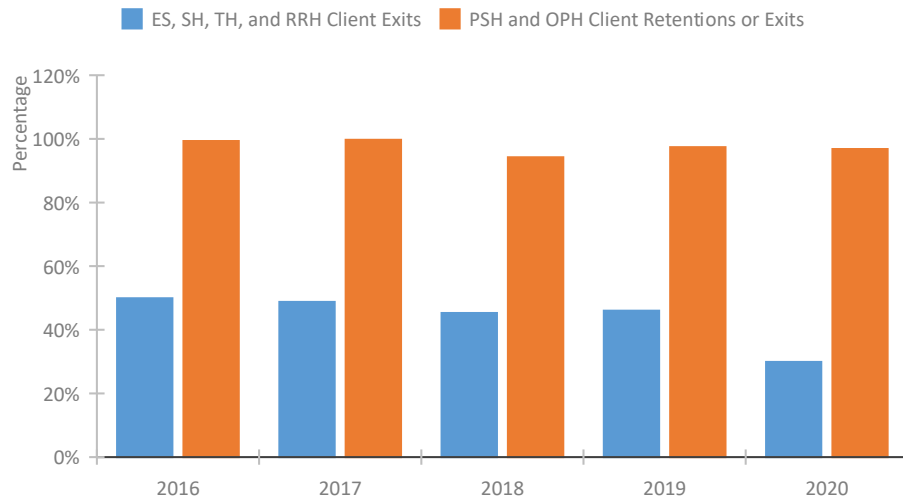
Length of Time Homeless



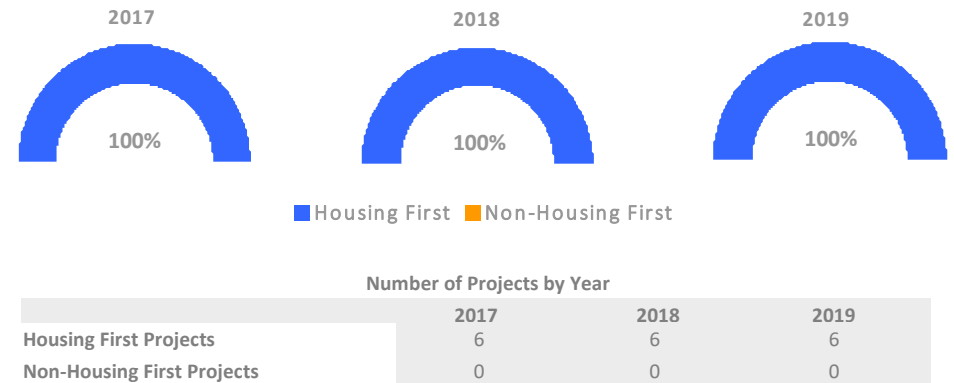
Returns to Homelessness Over Time



Exits to Permanent Housing by Program Type



Proportion of Housing First Projects by Year*



*In 2020 HUD awarded renewal projects noncompetitively, therefore no new data was collected and Housing First data remains the same from 2019 to 2020.

Data Summary: MA-505 New Bedford CoC

Point-In-Time Count Summary

	2016	2017	2018	2019	2020	2019-20 Change	% Change
Number of Sheltered Persons in Families	169	178	187	202	197	-5	-2%
Number of Unsheltered Persons in Families	0	0	0	2	0	-2	-100%
Number of Sheltered Individuals	245	125	173	178	153	-25	-14%
Number of Unsheltered Individuals	55	49	49	51	48	-3	-6%
Total Homeless Persons	469	352	409	433	398	-35	-8%
Number of Sheltered Families	51	52	57	62	66	4	6%
Number of Unsheltered Families	0	0	0	1	0	-1	-100%
Number of Total Families	51	52	57	63	66	3	5%
Sheltered Chronically Homeless Individuals	13	8	6	19	23	4	21%
Unsheltered Chronically Homeless Individuals	20	20	17	25	13	-12	-48%
Total Chronically Homeless Individuals	33	28	23	44	36	-8	-18%
Sheltered Veterans	56	43	50	41	38	-3	-7%
Unsheltered Veterans	5	3	2	2	1	-1	-50%
Total Veterans	61	46	52	43	39	-4	-9%
Sheltered Unaccompanied Youth (up to 24)	26	8	14	10	14	4	40%
Unsheltered Unaccompanied Youth (up to 24)	6	2	1	2	7	5	250%
Total Unaccompanied Youth (up to 24)	32	10	15	12	21	9	75%

System Performance Measures Summary

	2016	2017	2018	2018	2020	2019-20 Change	% Change
Average Length of Time Homeless (days)	100	92	119	216	184	-32	-14.8%
Rate People Return to Homelessness in 6 Months	2.5%	3.6%	3.5%	3.9%	1.8%	-2.1%	N/A
Number of People who are Homeless for the First Time	989	1,000	510	316	409	93	29.4%
Rate People Exit from ES, SH, TH, and RRH to PH	49.9%	48.8%	45.3%	46.0%	29.9%	-16.1%	N/A
Rate People in PSH and OPH Retain or Exit to PH	99.3%	99.7%	94.2%	97.4%	96.8%	-0.6%	N/A

Housing Inventory Count Summary

	2016	2017	2018	2019	2020	2019-20 Change	% Change
Emergency Shelter (ES)	211	227	276	296	298	2	1%
Safe Haven (SH)	--	--	--	--	12	--	--
Transitional Housing (TH)	253	125	123	113	85	-28	-25%
Permanent Supportive Housing (PSH)	294	262	294	313	302	-11	-4%
Rapid Re-Housing (RRH)	22	386	280	285	172	-113	-40%

Award Summary

	2016	2017	2018	2019	2020	2019-20 Change	% Change
Continuum of Care (CoC)	\$1,739,069	\$1,721,502	\$1,817,917	\$1,793,295	\$1,889,575	\$96,280	5%
Emergency Solutions Grants (ESG)	\$224,092	\$395,072	\$218,352	\$223,212	\$233,573	\$10,361	5%