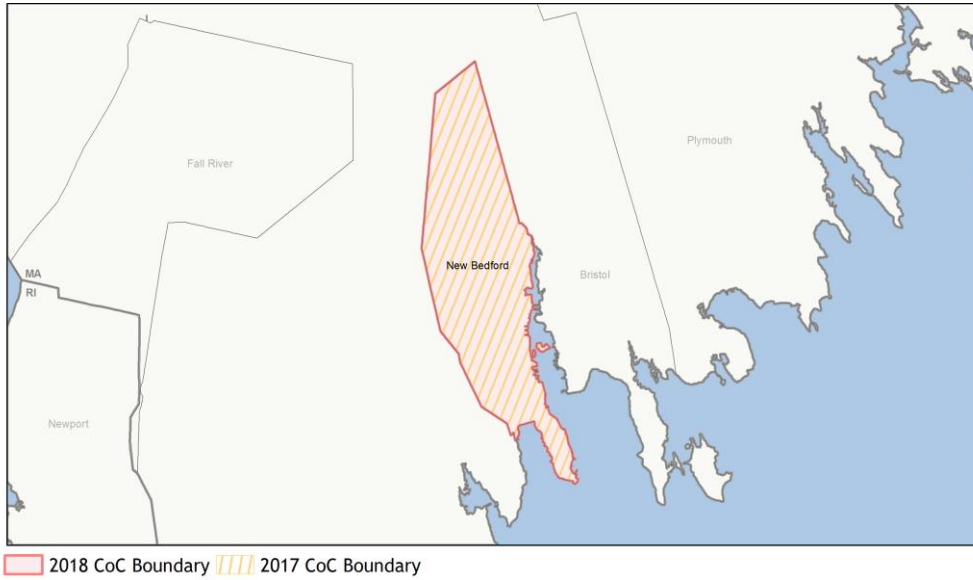
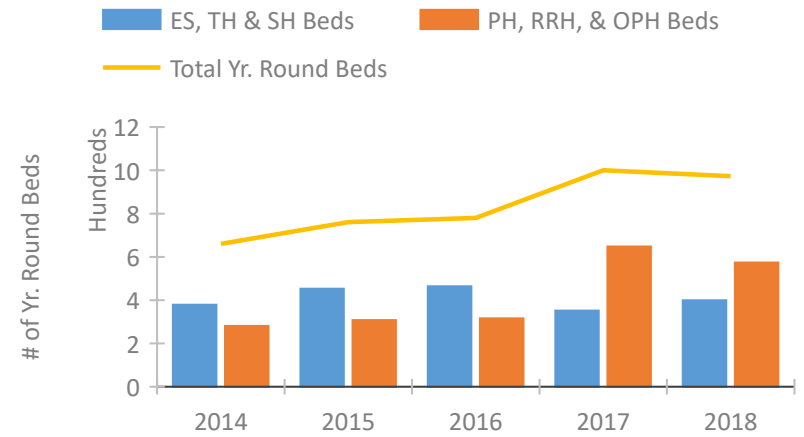


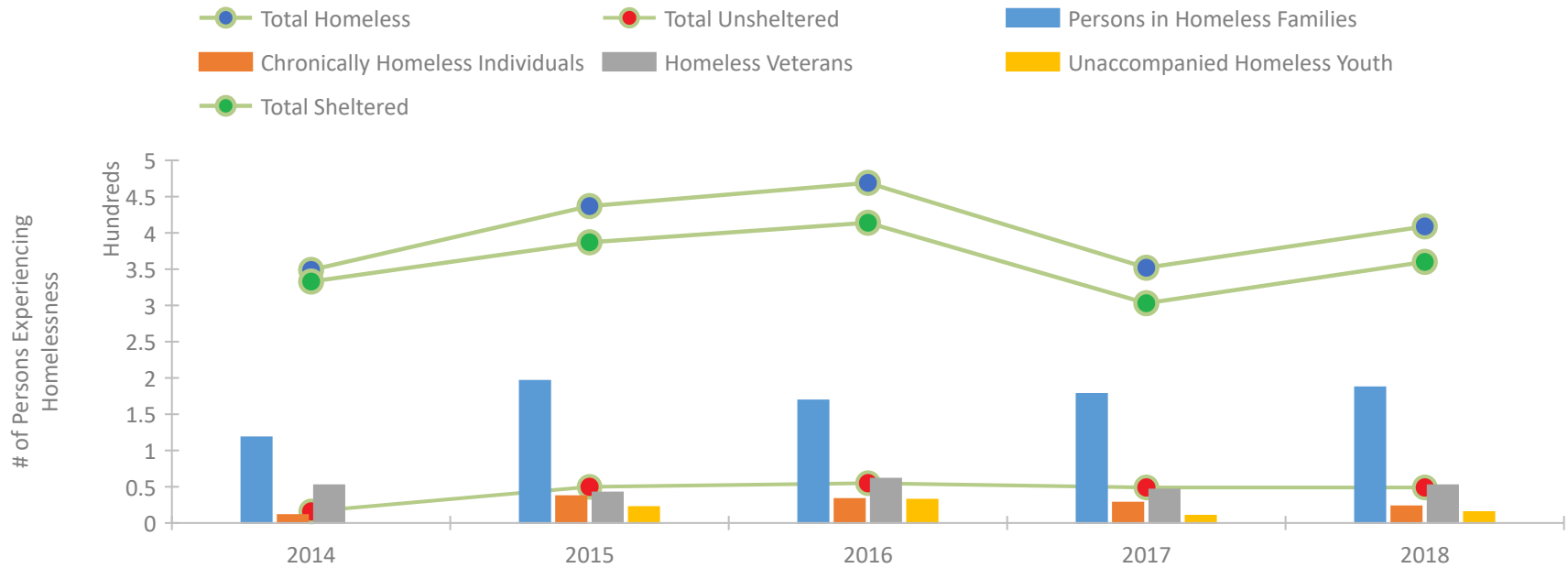
CoC Performance Profile MA-505 New Bedford CoC



Housing Inventory Count by Program Type

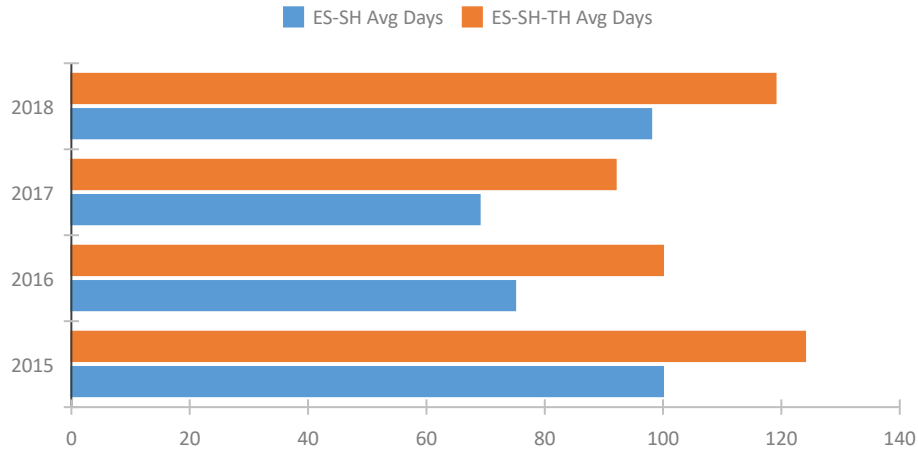


Homeless Population – Point-in-Time (PIT) Count

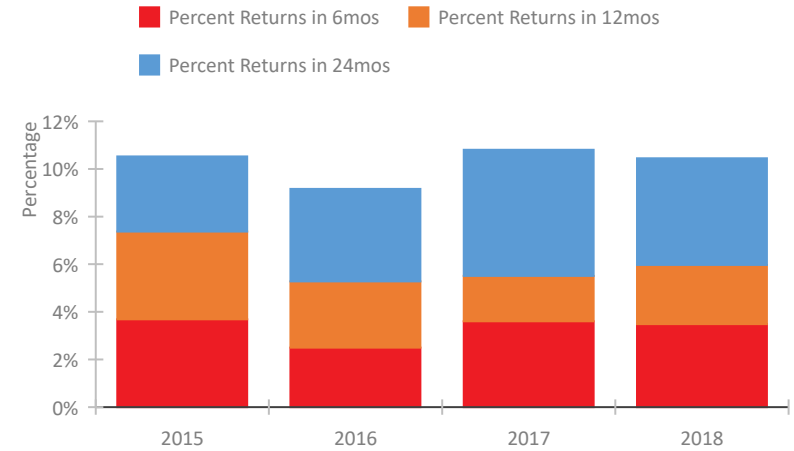


CoC Performance Profile MA-505 New Bedford CoC

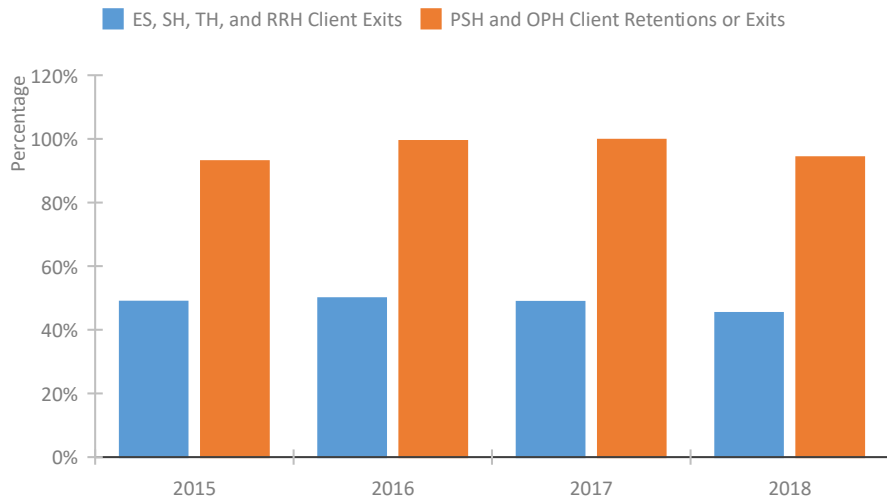
Length of Time Homeless



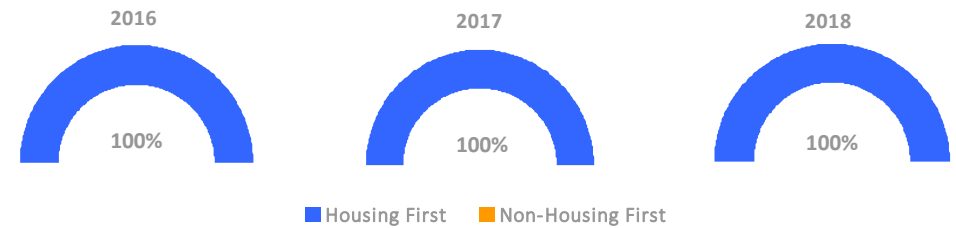
Returns to Homelessness Over Time



Exits to Permanent Housing by Program Type



Proportion of Housing First Projects by Year



Number of Projects by Year

	2016	2017	2018
Housing First Projects	7	6	6
Non-Housing First Projects	0	0	0

Data Summary: MA-505 New Bedford CoC

Point-In-Time Count Summary

	2014	2015	2016	2017	2018	2017-18 Change	% Change
Number of Sheltered Persons in Families	118	196	169	178	187	9	5%
Number of Unsheltered Persons in Families	0	0	0	0	0	0	--
Number of Sheltered Individuals	215	191	245	125	173	48	38%
Number of Unsheltered Individuals	16	50	55	49	49	0	0%
Total Homeless Persons	349	437	469	352	409	57	16%
Number of Sheltered Families	40	73	51	52	57	5	10%
Number of Unsheltered Families	0	0	0	0	0	0	--
Number of Total Families	40	73	51	52	57	5	10%
Sheltered Chronically Homeless Individuals	2	4	13	8	6	-2	-25%
Unsheltered Chronically Homeless Individuals	9	33	20	20	17	-3	-15%
Total Chronically Homeless Individuals	11	37	33	28	23	-5	-18%
Sheltered Veterans	51	38	56	43	50	7	16%
Unsheltered Veterans	1	4	5	3	2	-1	-33%
Total Veterans	52	42	61	46	52	6	13%
Sheltered Unaccompanied Youth (up to 24)	--	17	26	8	14	6	75%
Unsheltered Unaccompanied Youth (up to 24)	--	5	6	2	1	-1	-50%
Total Unaccompanied Youth (up to 24)	--	22	32	10	15	5	50%

System Performance Measures Summary

	2014	2015	2016	2017	2018	2017-18 Change	% Change
Average Length of Time Homeless (days)	N/A	124	100	92	119	27	29.3%
Rate People Return to Homelessness in 6 Months	N/A	3.7%	2.5%	3.6%	3.5%	-0.1%	N/A
Number of People who are Homeless for the First Time	N/A	790	989	1000	510	-490	-49%
Rate People Exit from ES, SH, TH, and RRH to PH	N/A	48.8%	49.9%	48.8%	45.3%	-3.5%	N/A
Rate People in PSH and OPH Retain or Exit to PH	N/A	93.0%	99.3%	99.7%	94.2%	-5.5%	N/A

Housing Inventory Count Summary

	2014	2015	2016	2017	2018	2017-18 Change	% Change
Emergency Shelter (ES)	130	179	211	227	276	49	22%
Transitional Housing (TH)	249	274	253	125	123	-2	-2%
Permanent Supportive Housing (PSH)	281	308	294	262	294	32	12%
Rapid Re-Housing (RRH)	--	--	22	386	280	-106	-27%

Award Summary

	2014	2015	2016	2017	2018	2017-18 Change	% Change
Continuum of Care (CoC)	\$1,968,954	\$1,688,210	\$1,739,069	\$1,721,502	\$1,817,917	\$96,415	6%
Emergency Solutions Grants (ESG)	\$216,474	\$227,275	\$224,092	\$395,072	\$218,352	(\$176,720)	-45%