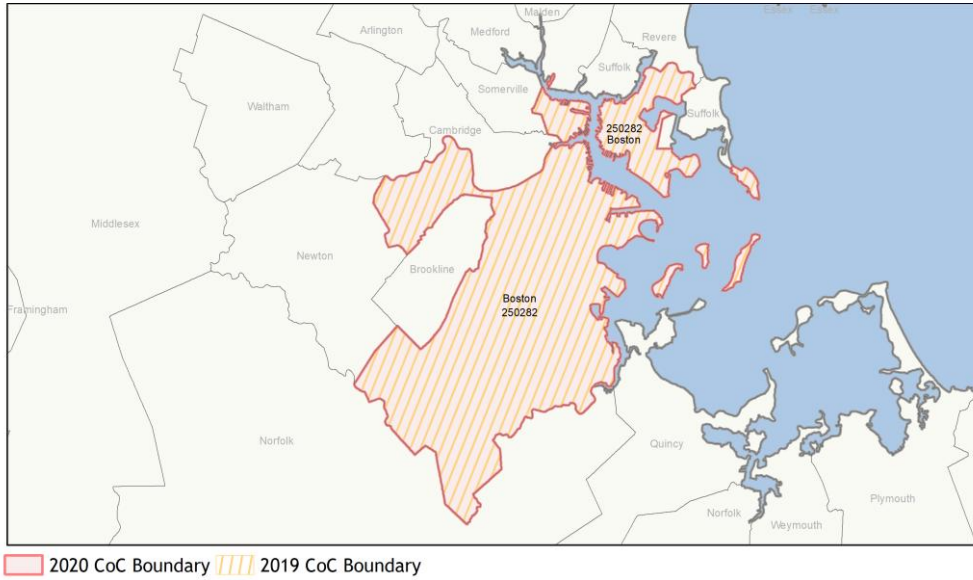
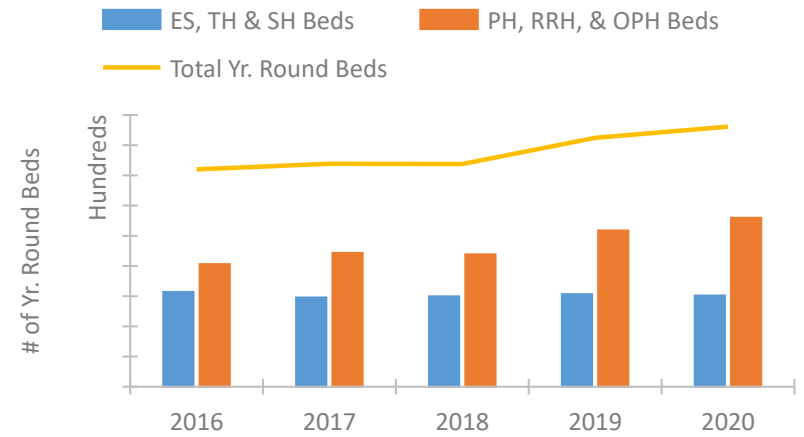


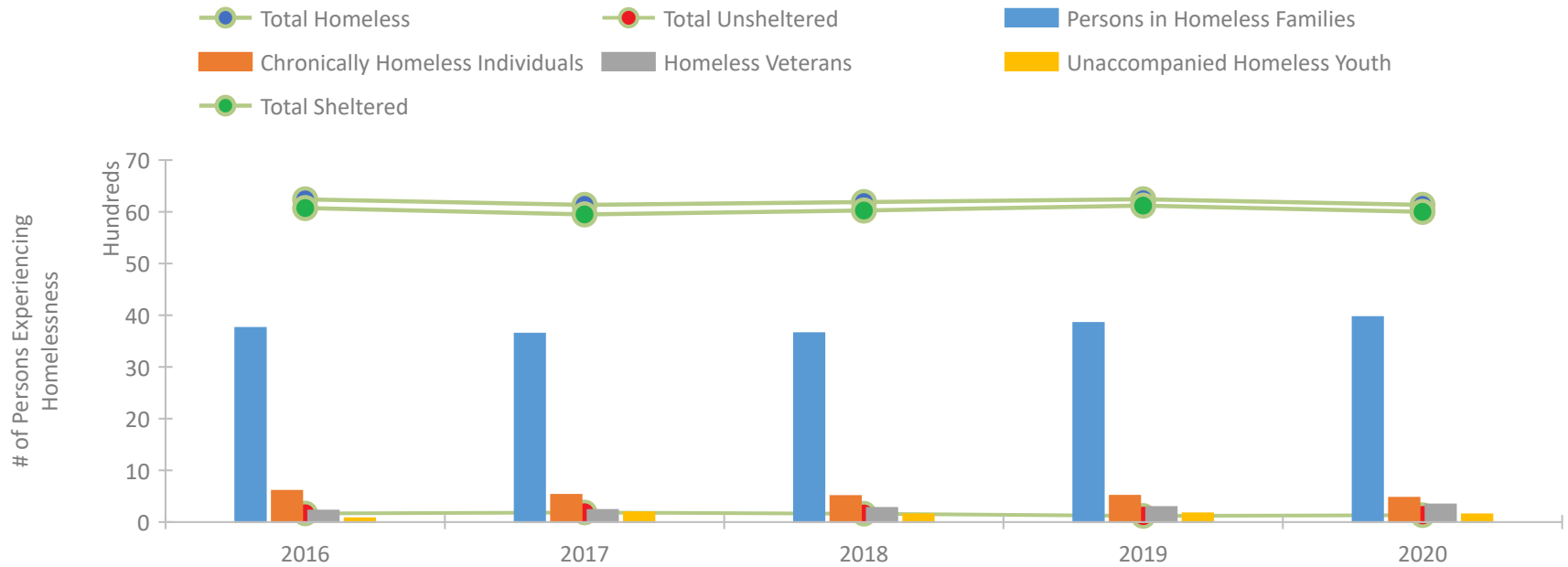
## CoC Performance Profile MA-500 Boston CoC



### Housing Inventory Count by Program Type

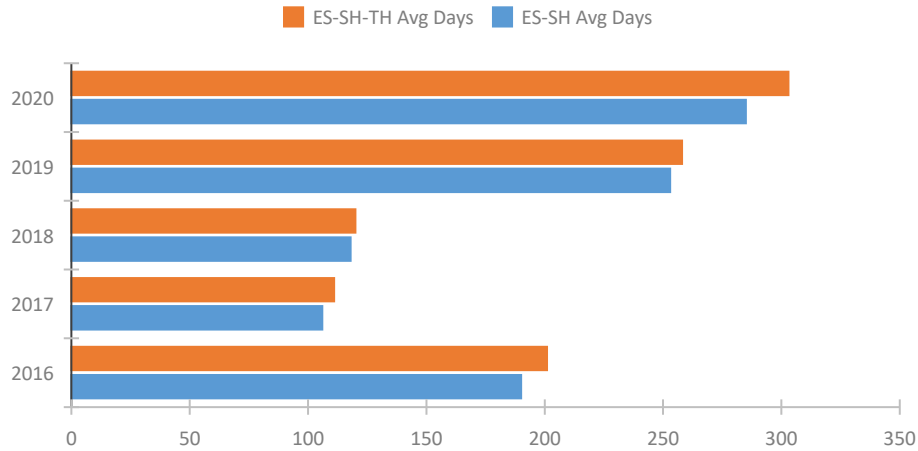


### Homeless Population – Point-in-Time (PIT) Count

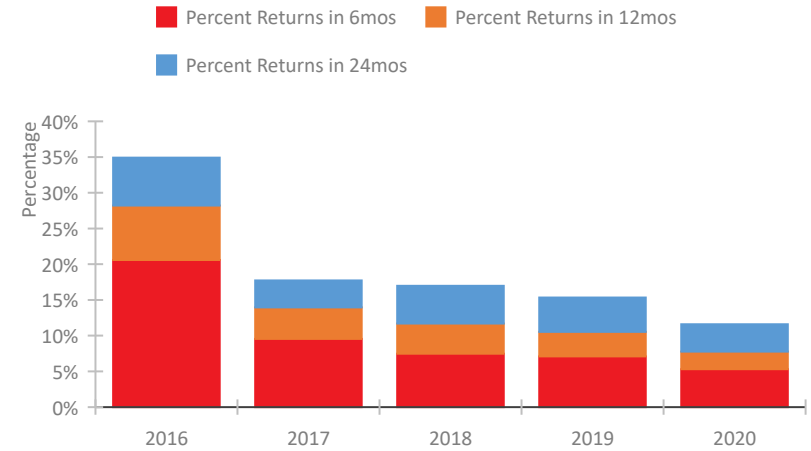


## CoC Performance Profile MA-500 Boston CoC

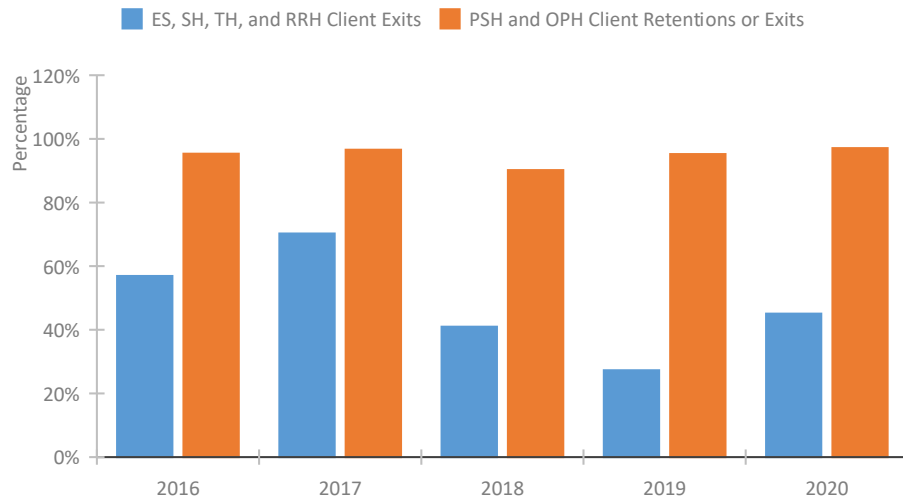
### Length of Time Homeless



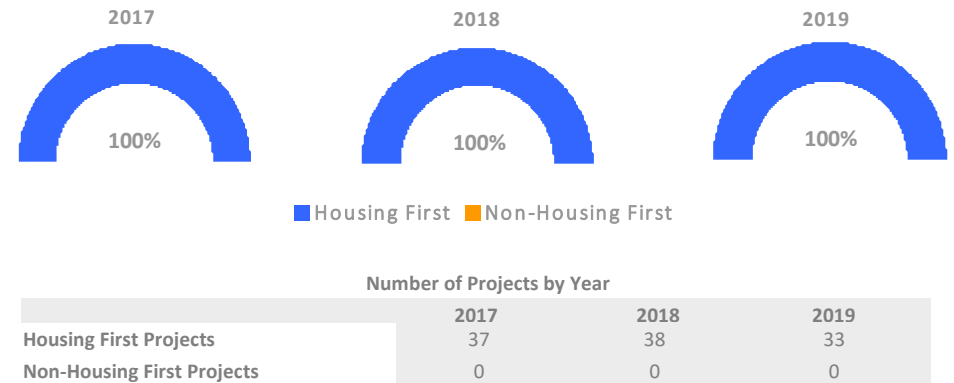
### Returns to Homelessness Over Time



### Exits to Permanent Housing by Program Type



### Proportion of Housing First Projects by Year\*



\*In 2020 HUD awarded renewal projects noncompetitively, therefore no new data was collected and Housing First data remains the same from 2019 to 2020.

## Data Summary: MA-500 Boston CoC

### Point-In-Time Count Summary

	2016	2017	2018	2019	2020	2019-20 Change	% Change
Number of Sheltered Persons in Families	3,755	3,643	3,653	3,850	3,965	115	3%
Number of Unsheltered Persons in Families	0	0	0	0	0	0	--
Number of Sheltered Individuals	2,318	2,306	2,372	2,271	2,034	-237	-10%
Number of Unsheltered Individuals	167	186	163	121	135	14	12%
<b>Total Homeless Persons</b>	<b>6,240</b>	<b>6,135</b>	<b>6,188</b>	<b>6,242</b>	<b>6,134</b>	<b>-108</b>	<b>-2%</b>
Number of Sheltered Families	1,358	1,079	1,121	1,221	1,294	73	6%
Number of Unsheltered Families	0	0	0	0	0	0	--
<b>Number of Total Families</b>	<b>1,358</b>	<b>1,079</b>	<b>1,121</b>	<b>1,221</b>	<b>1,294</b>	<b>73</b>	<b>6%</b>
Sheltered Chronically Homeless Individuals	586	488	475	491	450	-41	-8%
Unsheltered Chronically Homeless Individuals	19	38	29	17	21	4	24%
<b>Total Chronically Homeless Individuals</b>	<b>605</b>	<b>526</b>	<b>504</b>	<b>508</b>	<b>471</b>	<b>-37</b>	<b>-7%</b>
Sheltered Veterans	217	225	268	286	338	52	18%
Unsheltered Veterans	5	8	7	4	3	-1	-25%
<b>Total Veterans</b>	<b>222</b>	<b>233</b>	<b>275</b>	<b>290</b>	<b>341</b>	<b>51</b>	<b>18%</b>
Sheltered Unaccompanied Youth (up to 24)	62	183	143	162	143	-19	-12%
Unsheltered Unaccompanied Youth (up to 24)	11	7	8	6	6	0	-0%
<b>Total Unaccompanied Youth (up to 24)</b>	<b>73</b>	<b>190</b>	<b>151</b>	<b>168</b>	<b>149</b>	<b>-19</b>	<b>-11%</b>

### System Performance Measures Summary

	2016	2017	2018	2018	2020	2019-20 Change	% Change
Average Length of Time Homeless (days)	201	111	120	258	303	45	17.4%
Rate People Return to Homelessness in 6 Months	20.6%	9.5%	7.5%	7.1%	5.3%	-1.8%	N/A
Number of People who are Homeless for the First Time	9,395	8,356	7,576	6,077	5,506	-571	-9.4%
Rate People Exit from ES, SH, TH, and RRH to PH	56.9%	70.3%	41.0%	27.3%	45.1%	17.8%	N/A
Rate People in PSH and OPH Retain or Exit to PH	95.3%	96.6%	90.2%	95.2%	97.1%	1.9%	N/A

### Housing Inventory Count Summary

	2016	2017	2018	2019	2020	2019-20 Change	% Change
Emergency Shelter (ES)	5,219	5,198	5,365	5,578	5,458	-120	-2%
Safe Haven (SH)	27	59	60	41	41	0	-0%
Transitional Housing (TH)	1,035	648	563	515	545	30	6%
Permanent Supportive Housing (PSH)	5,150	4,750	4,860	5,487	5,496	9	0%
Rapid Re-Housing (RRH)	138	934	1,182	872	1,598	726	83%
Other Permanent Housing (OPH)	2,744	3,184	2,722	3,994	4,093	99	2%

### Award Summary

	2016	2017	2018	2019	2020	2019-20 Change	% Change
<b>Continuum of Care (CoC)</b>	\$24,243,260	\$26,368,398	\$29,021,101	\$31,723,357	\$38,685,686	\$6,962,329	22%
<b>Emergency Solutions Grants (ESG)</b>	\$1,449,423	\$2,014,377	\$1,418,872	\$1,461,960	\$1,506,611	\$44,651	3%
<b>Youth Homelessness Demonstration Program (YHDP)</b>	--	\$4,924,520	--	--	--	--	--