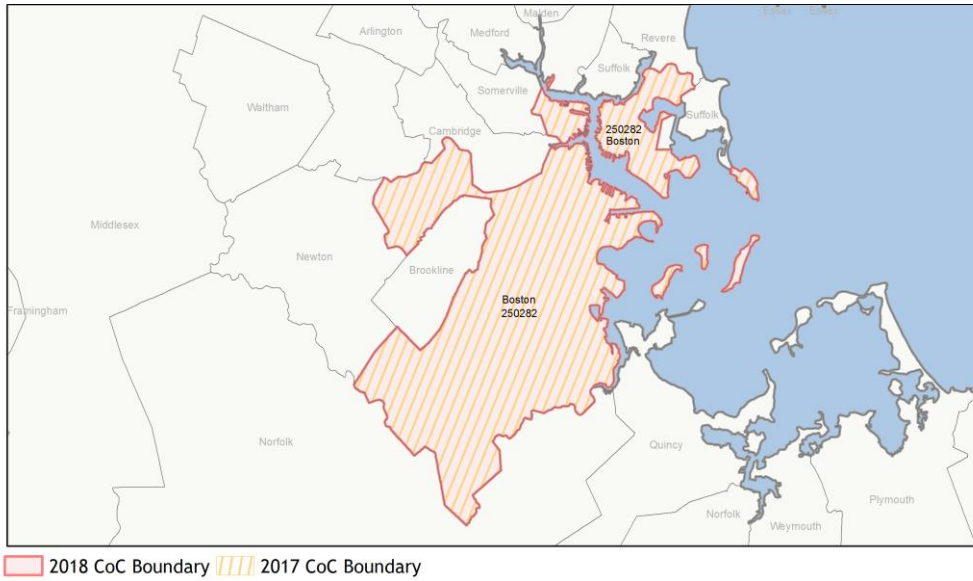
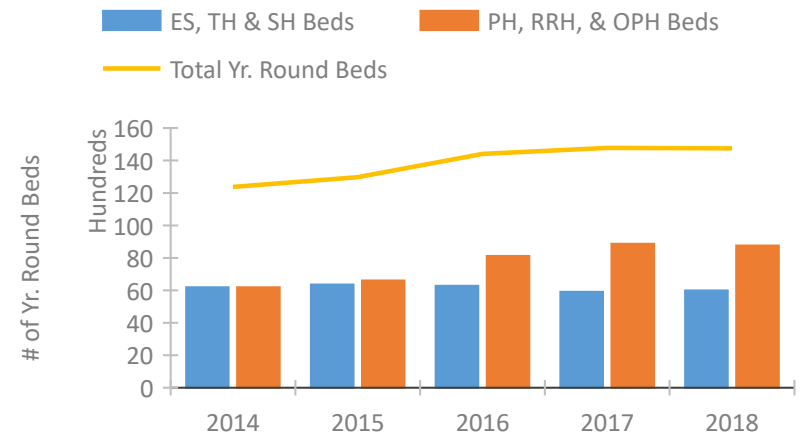


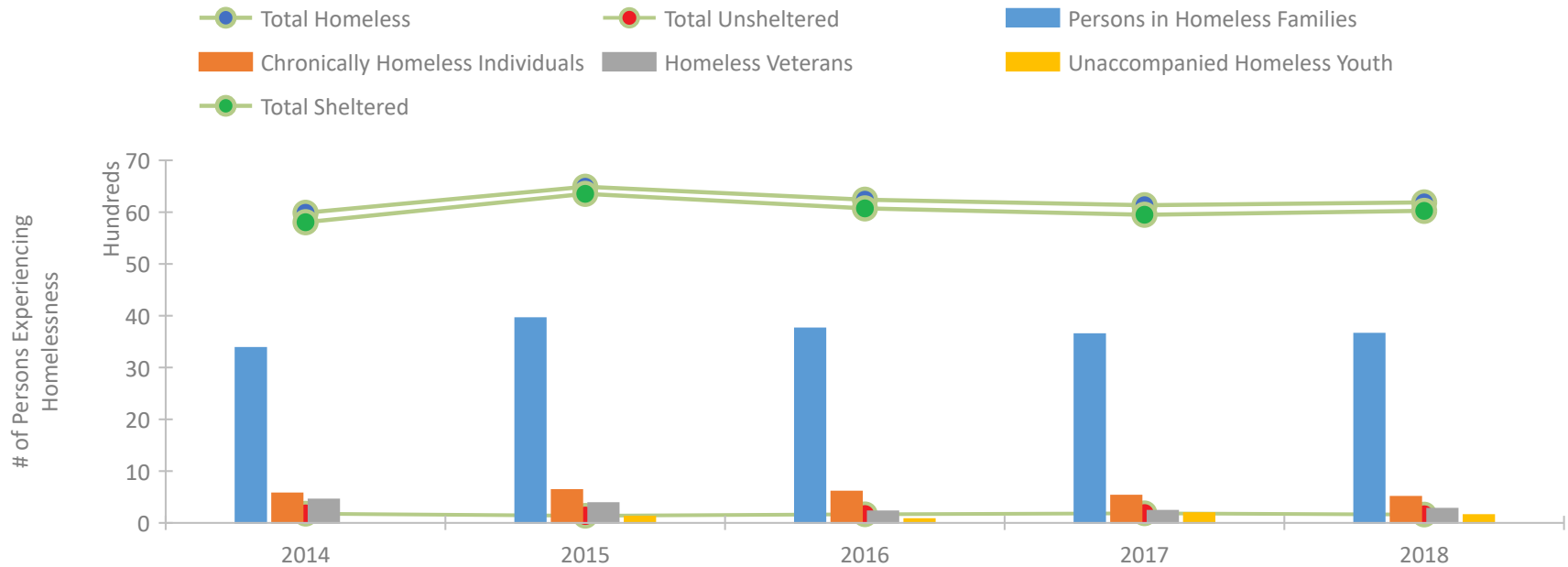
CoC Performance Profile MA-500 Boston CoC



Housing Inventory Count by Program Type

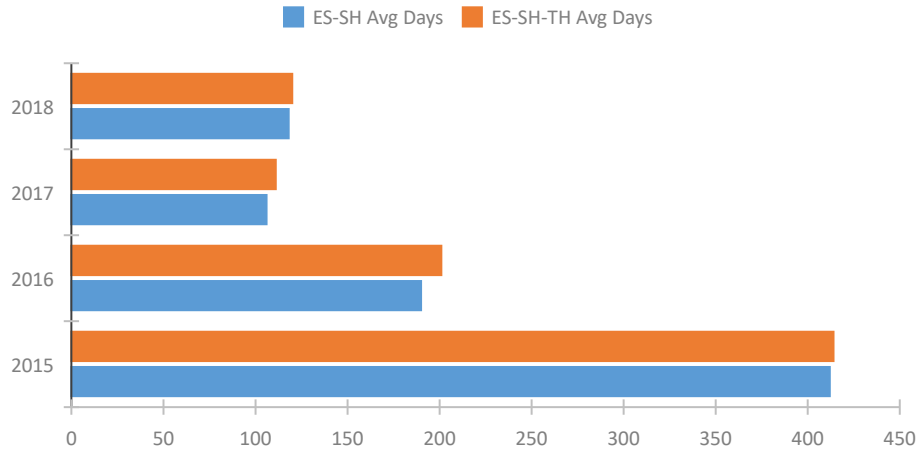


Homeless Population – Point-in-Time (PIT) Count

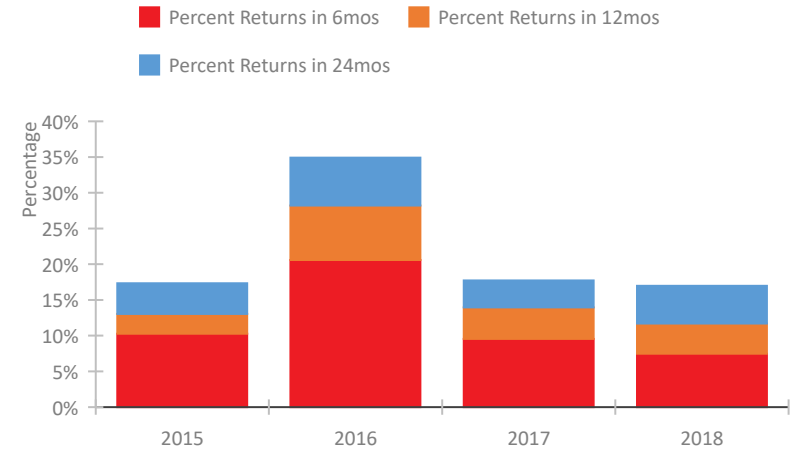


CoC Performance Profile MA-500 Boston CoC

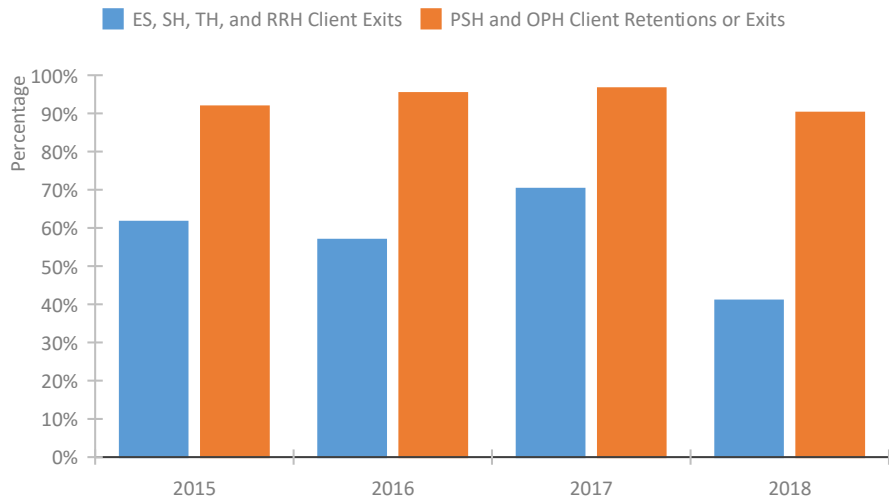
Length of Time Homeless



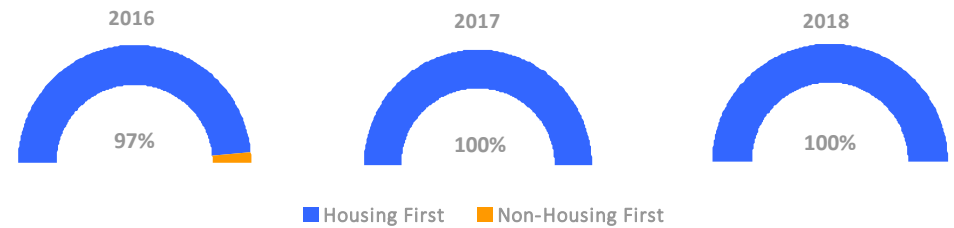
Returns to Homelessness Over Time



Exits to Permanent Housing by Program Type



Proportion of Housing First Projects by Year



Number of Projects by Year

	2016	2017	2018
Housing First Projects	35	37	38
Non-Housing First Projects	1	0	0

Data Summary: MA-500 Boston CoC

Point-In-Time Count Summary

	2014	2015	2016	2017	2018	2017-18 Change	% Change
Number of Sheltered Persons in Families	3,378	3,953	3,755	3,643	3,653	10	0%
Number of Unsheltered Persons in Families	0	0	0	0	0	0	--
Number of Sheltered Individuals	2,429	2,400	2,318	2,306	2,372	66	3%
Number of Unsheltered Individuals	180	139	167	186	163	-23	-12%
Total Homeless Persons	5,987	6,492	6,240	6,135	6,188	53	1%
Number of Sheltered Families	1,152	1,377	1,358	1,079	1,121	42	4%
Number of Unsheltered Families	0	0	0	0	0	0	--
Number of Total Families	1,152	1,377	1,358	1,079	1,121	42	4%
Sheltered Chronically Homeless Individuals	523	600	586	488	475	-13	-3%
Unsheltered Chronically Homeless Individuals	45	35	19	38	29	-9	-24%
Total Chronically Homeless Individuals	568	635	605	526	504	-22	-4%
Sheltered Veterans	436	374	217	225	268	43	19%
Unsheltered Veterans	14	9	5	8	7	-1	-12%
Total Veterans	450	383	222	233	275	42	18%
Sheltered Unaccompanied Youth (up to 24)	--	107	62	183	143	-40	-22%
Unsheltered Unaccompanied Youth (up to 24)	--	13	11	7	8	1	14%
Total Unaccompanied Youth (up to 24)	--	120	73	190	151	-39	-21%

System Performance Measures Summary

	2014	2015	2016	2017	2018	2017-18 Change	% Change
Average Length of Time Homeless (days)	N/A	414	201	111	120	9	8.1%
Rate People Return to Homelessness in 6 Months	N/A	10.3%	20.6%	9.5%	7.5%	-2.1%	N/A
Number of People who are Homeless for the First Time	N/A	9471	9395	8356	7576	-780	-9.3%
Rate People Exit from ES, SH, TH, and RRH to PH	N/A	61.6%	56.9%	70.3%	41.0%	-29.3%	N/A
Rate People in PSH and OPH Retain or Exit to PH	N/A	91.8%	95.3%	96.6%	90.2%	-6.4%	N/A

Housing Inventory Count Summary

	2014	2015	2016	2017	2018	2017-18 Change	% Change
Emergency Shelter (ES)	4,849	5,181	5,219	5,198	5,365	167	3%
Safe Haven (SH)	27	27	27	59	60	1	2%
Transitional Housing (TH)	1,313	1,156	1,035	648	563	-85	-13%
Permanent Supportive Housing (PSH)	6,042	5,093	5,150	4,750	4,860	110	2%
Rapid Re-Housing (RRH)	51	85	138	934	1,182	248	27%
Other Permanent Housing (OPH)	--	1,339	2,744	3,184	2,722	-462	-15%

Award Summary

	2014	2015	2016	2017	2018	2017-18 Change	% Change
Continuum of Care (CoC)	\$24,163,154	\$22,664,525	\$24,243,260	\$26,368,398	\$29,021,101	\$2,652,703	10%
Emergency Solutions Grants (ESG)	\$1,367,603	\$1,460,989	\$1,449,423	\$2,014,377	\$1,418,872	(\$595,505)	-30%
Youth Homelessness Demonstration Program (YHDP)	N/A	N/A	--	\$4,924,520	--	--	--