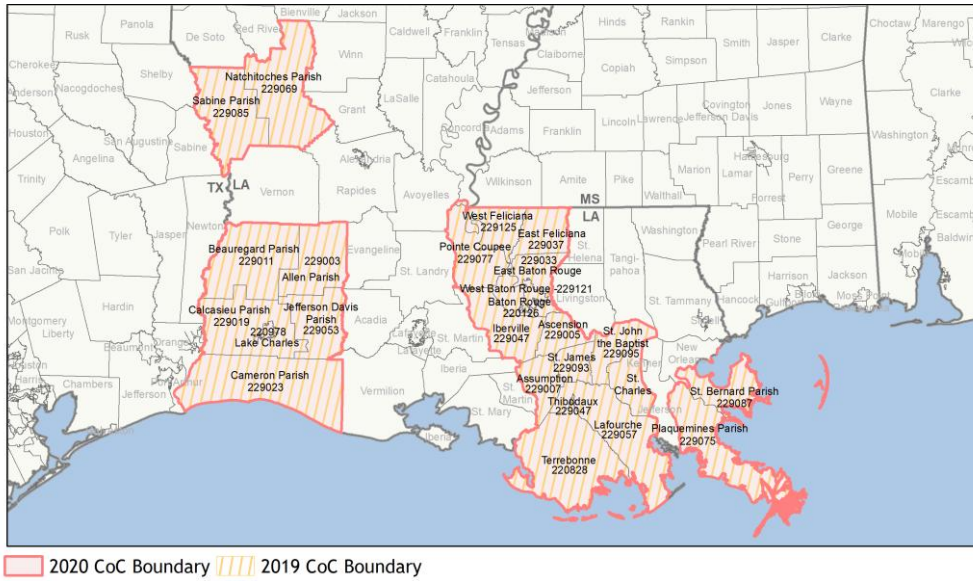
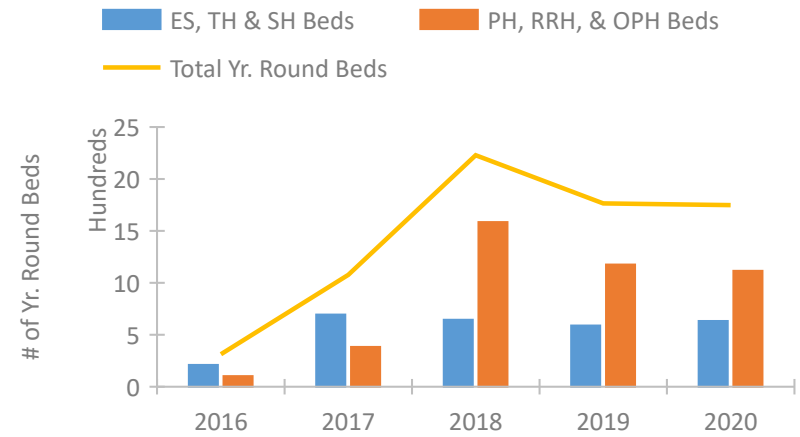


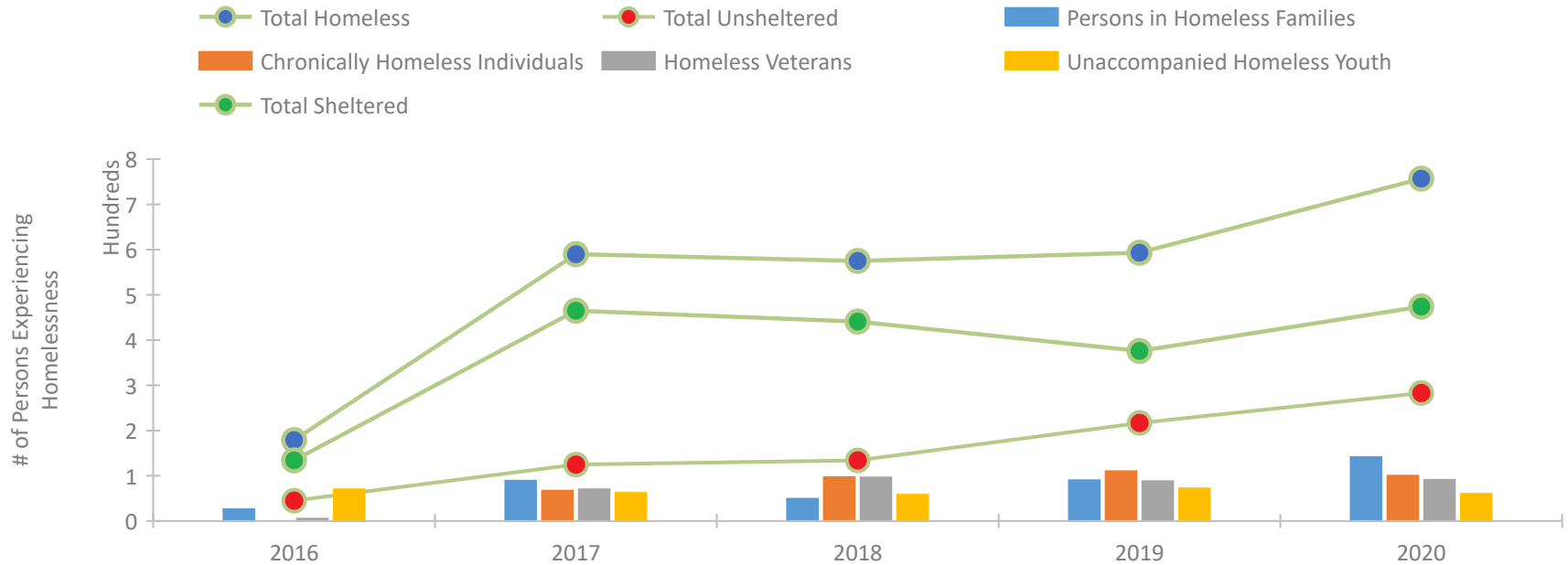
CoC Performance Profile LA-509 Louisiana Balance of State CoC



Housing Inventory Count by Program Type

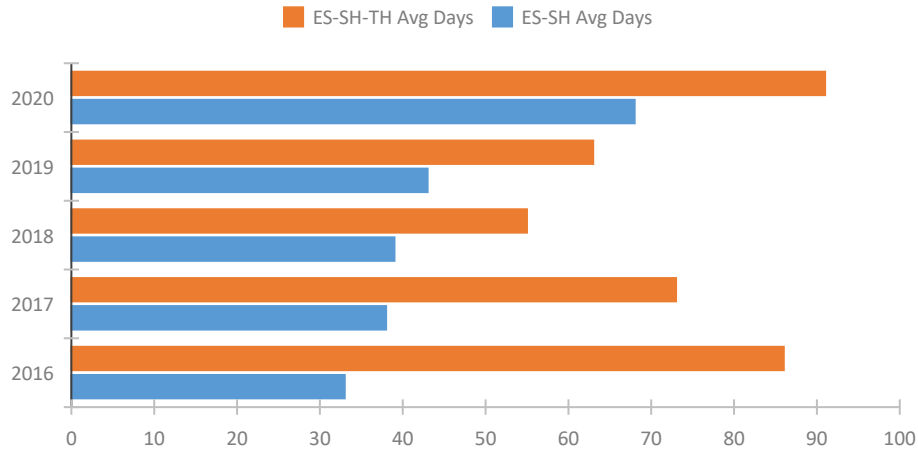


Homeless Population – Point-in-Time (PIT) Count

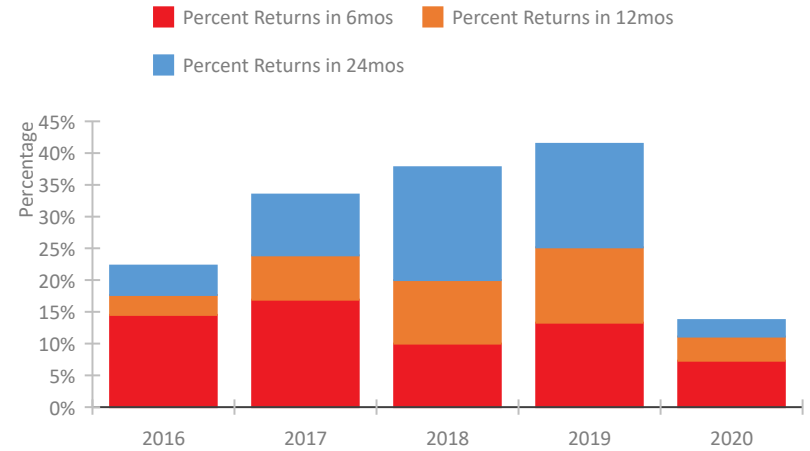


CoC Performance Profile LA-509 Louisiana Balance of State CoC

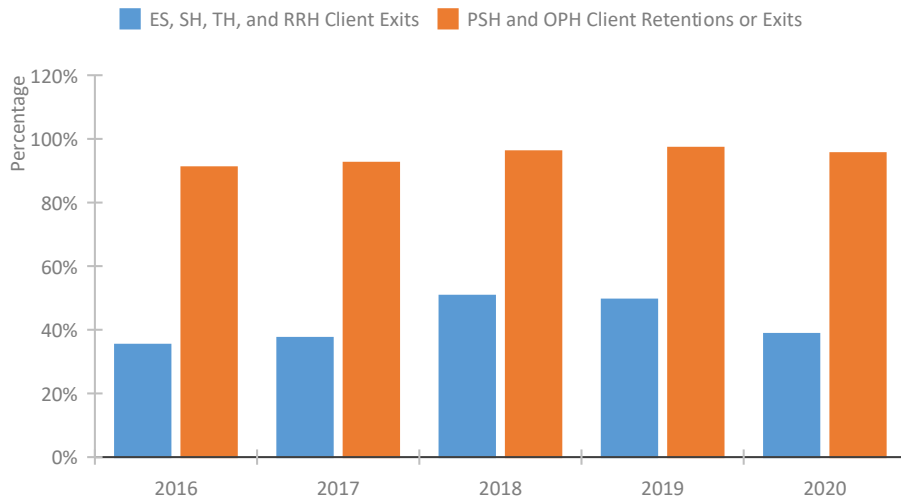
Length of Time Homeless



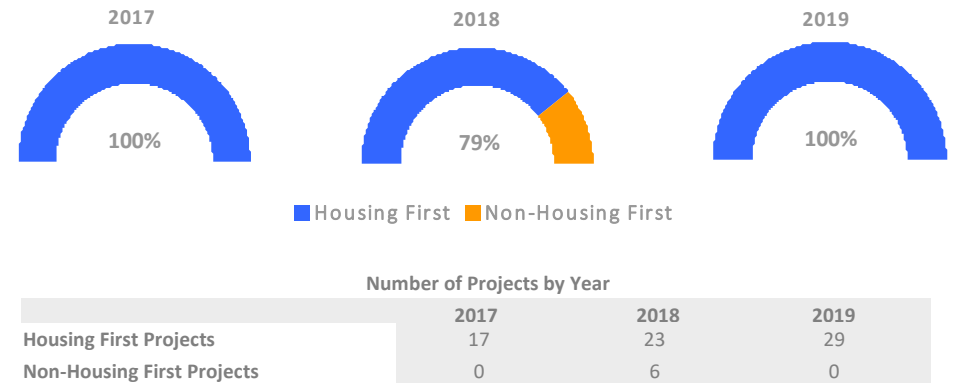
Returns to Homelessness Over Time



Exits to Permanent Housing by Program Type



Proportion of Housing First Projects by Year*



*In 2020 HUD awarded renewal projects noncompetitively, therefore no new data was collected and Housing First data remains the same from 2019 to 2020.

Data Summary: LA-509 Louisiana Balance of State CoC

Point-In-Time Count Summary

	2016	2017	2018	2019	2020	2019-20 Change	% Change
Number of Sheltered Persons in Families	10	85	41	90	134	44	49%
Number of Unsheltered Persons in Families	16	4	8	0	7	7	100%
Number of Sheltered Individuals	124	380	400	286	340	54	19%
Number of Unsheltered Individuals	29	121	126	217	276	59	27%
Total Homeless Persons	179	590	575	593	757	164	28%
Number of Sheltered Families	2	26	14	27	39	12	44%
Number of Unsheltered Families	5	2	2	0	1	1	100%
Number of Total Families	7	28	16	27	40	13	48%
Sheltered Chronically Homeless Individuals	0	7	35	36	39	3	8%
Unsheltered Chronically Homeless Individuals	0	60	62	74	61	-13	-18%
Total Chronically Homeless Individuals	0	67	97	110	100	-10	-9%
Sheltered Veterans	5	56	85	69	77	8	12%
Unsheltered Veterans	0	14	11	19	14	-5	-26%
Total Veterans	5	70	96	88	91	3	3%
Sheltered Unaccompanied Youth (up to 24)	62	52	48	58	41	-17	-29%
Unsheltered Unaccompanied Youth (up to 24)	8	10	10	14	19	5	36%
Total Unaccompanied Youth (up to 24)	70	62	58	72	60	-12	-17%

System Performance Measures Summary

	2016	2017	2018	2018	2020	2019-20 Change	% Change
Average Length of Time Homeless (days)	86	73	55	63	91	28	44.4%
Rate People Return to Homelessness in 6 Months	14.5%	16.9%	10.0%	13.3%	7.3%	-6%	N/A
Number of People who are Homeless for the First Time	1,534	1,903	1,563	1,740	1,441	-299	-17.2%
Rate People Exit from ES, SH, TH, and RRH to PH	35.3%	37.4%	50.7%	49.5%	38.7%	-10.8%	N/A
Rate People in PSH and OPH Retain or Exit to PH	91.0%	92.5%	96.1%	97.2%	95.5%	-1.7%	N/A

Housing Inventory Count Summary

	2016	2017	2018	2019	2020	2019-20 Change	% Change
Emergency Shelter (ES)	139	306	355	396	417	21	5%
Safe Haven (SH)	--	--	--	--	45	--	--
Transitional Housing (TH)	71	388	289	193	170	-23	-12%
Permanent Supportive Housing (PSH)	102	365	730	719	671	-48	-7%
Rapid Re-Housing (RRH)	--	18	855	457	445	-12	-3%

Award Summary

	2016	2017	2018	2019	2020	2019-20 Change	% Change
Continuum of Care (CoC)	\$12,763,966	\$15,634,597	\$18,368,336	\$20,125,458	\$21,055,755	\$930,297	5%
Emergency Solutions Grants (ESG)	\$262,197	\$459,176	\$256,333	\$266,896	\$277,199	\$10,303	4%