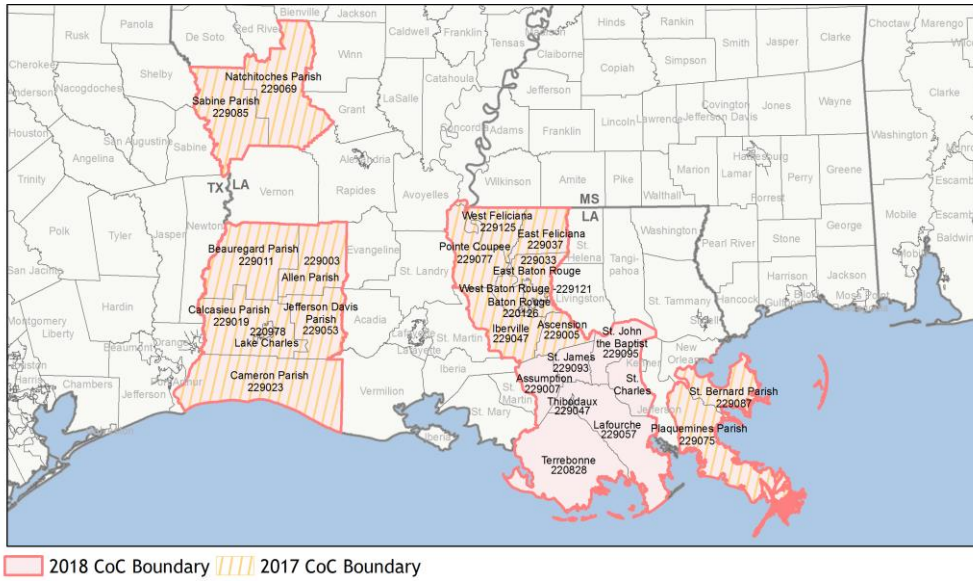
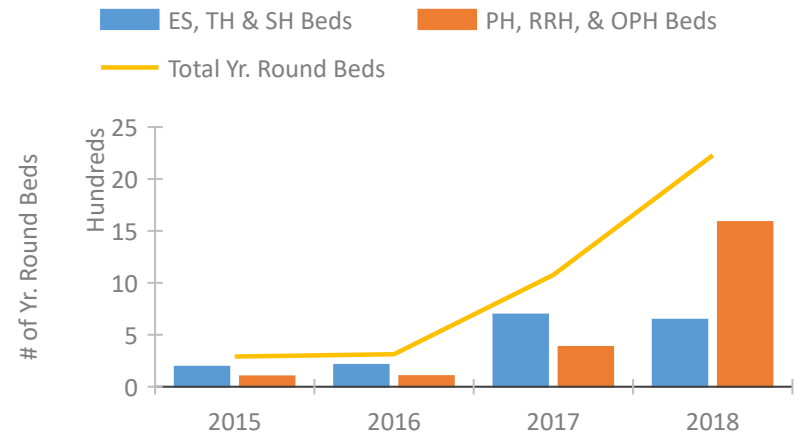


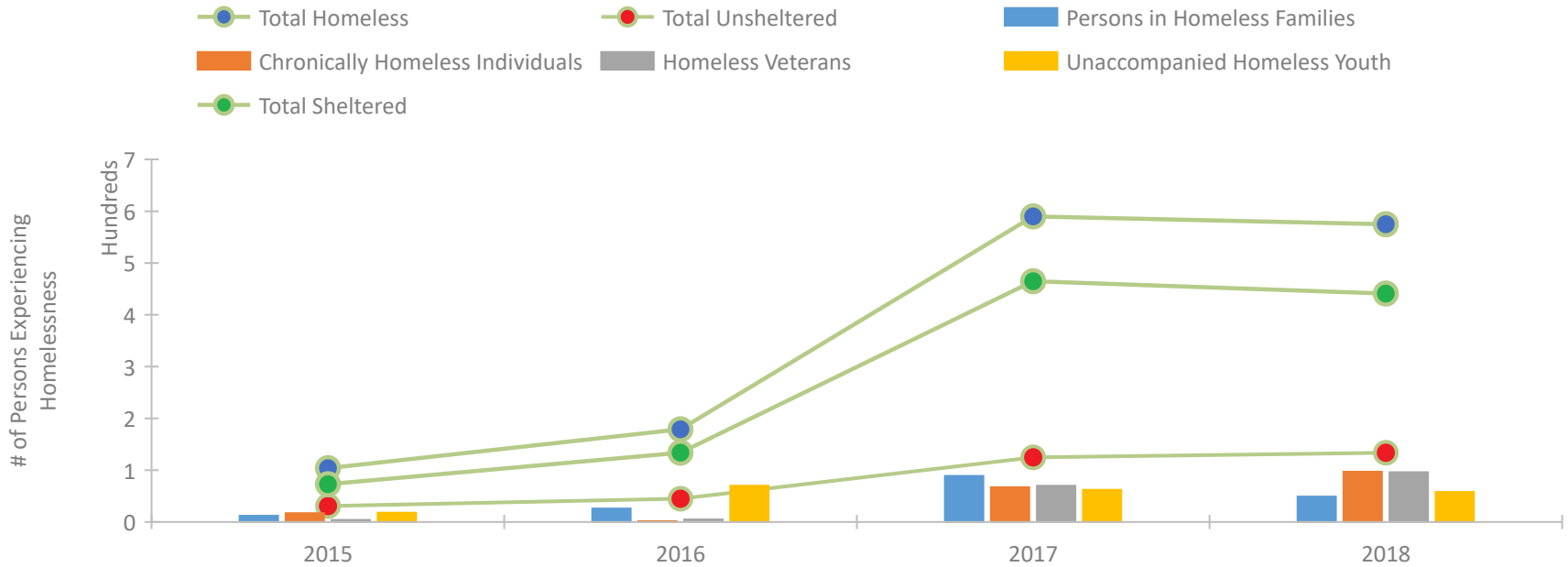
CoC Performance Profile LA-509 Louisiana Balance of State CoC



Housing Inventory Count by Program Type

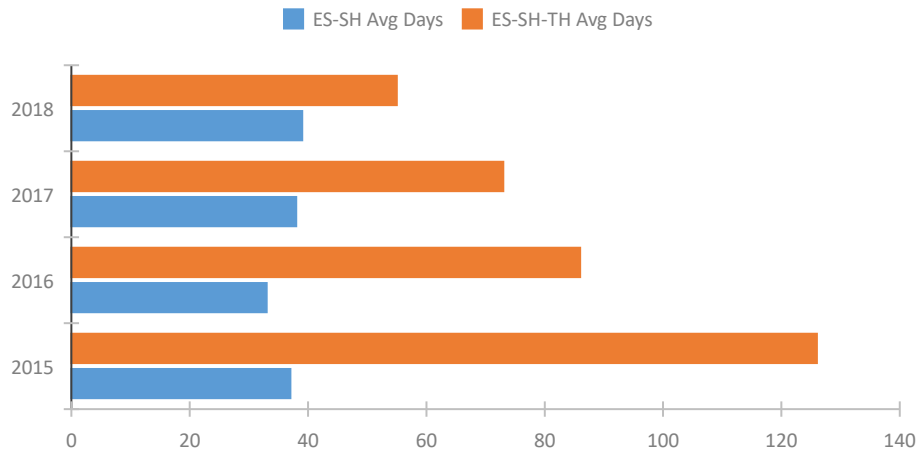


Homeless Population – Point-in-Time (PIT) Count

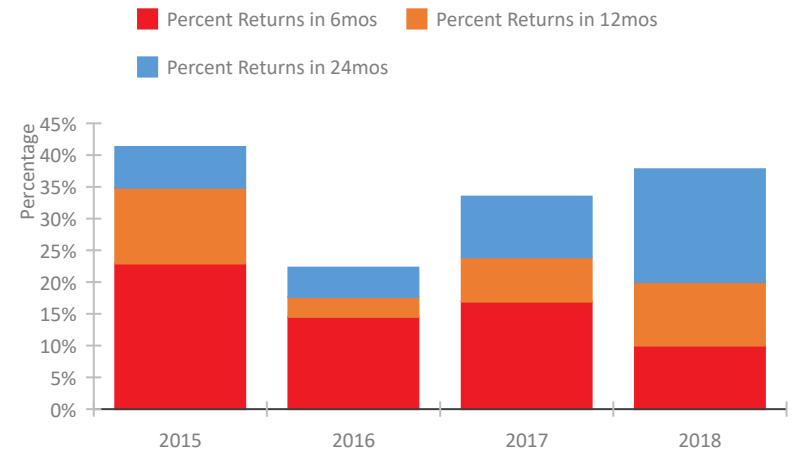


CoC Performance Profile LA-509 Louisiana Balance of State CoC

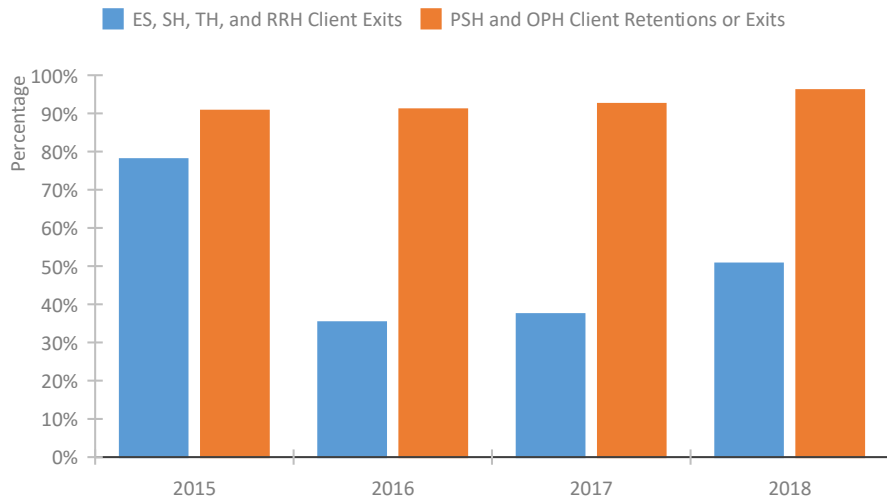
Length of Time Homeless



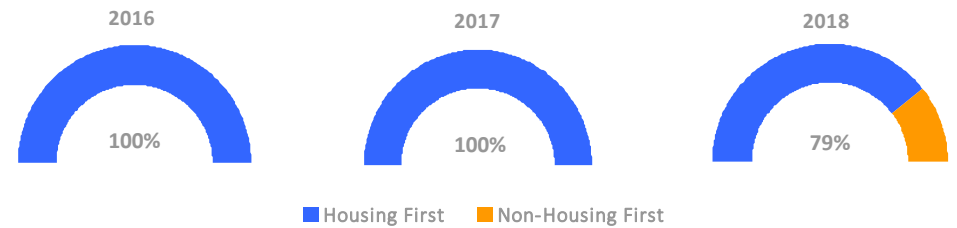
Returns to Homelessness Over Time



Exits to Permanent Housing by Program Type



Proportion of Housing First Projects by Year



Number of Projects by Year

	2016	2017	2018
Housing First Projects	2	17	23
Non-Housing First Projects	0	0	6

Data Summary: LA-509 Louisiana Balance of State CoC

Point-In-Time Count Summary

	2014	2015	2016	2017	2018	2017-18 Change	% Change
Number of Sheltered Persons in Families	--	7	10	85	41	-44	-52%
Number of Unsheltered Persons in Families	--	5	16	4	8	4	100%
Number of Sheltered Individuals	--	66	124	380	400	20	5%
Number of Unsheltered Individuals	--	26	29	121	126	5	4%
Total Homeless Persons	--	104	179	590	575	-15	-3%
Number of Sheltered Families	--	3	2	26	14	-12	-46%
Number of Unsheltered Families	--	2	5	2	2	0	0%
Number of Total Families	--	5	7	28	16	-12	-43%
Sheltered Chronically Homeless Individuals	--	13	0	7	35	28	400%
Unsheltered Chronically Homeless Individuals	--	4	0	60	62	2	3%
Total Chronically Homeless Individuals	--	17	0	67	97	30	45%
Sheltered Veterans	--	3	5	56	85	29	52%
Unsheltered Veterans	--	1	0	14	11	-3	-21%
Total Veterans	--	4	5	70	96	26	37%
Sheltered Unaccompanied Youth (up to 24)	--	16	62	52	48	-4	-8%
Unsheltered Unaccompanied Youth (up to 24)	--	2	8	10	10	0	0%
Total Unaccompanied Youth (up to 24)	--	18	70	62	58	-4	-6%

System Performance Measures Summary

	2014	2015	2016	2017	2018	2017-18 Change	% Change
Average Length of Time Homeless (days)	N/A	126	86	73	55	-18	-24.7%
Rate People Return to Homelessness in 6 Months	N/A	22.9%	14.5%	16.9%	10.0%	-6.9%	N/A
Number of People who are Homeless for the First Time	N/A	149	1534	1903	1563	-340	-17.9%
Rate People Exit from ES, SH, TH, and RRH to PH	N/A	78.0%	35.3%	37.4%	50.7%	13.3%	N/A
Rate People in PSH and OPH Retain or Exit to PH	N/A	90.7%	91.0%	92.5%	96.1%	3.6%	N/A

Housing Inventory Count Summary

	2014	2015	2016	2017	2018	2017-18 Change	% Change
Emergency Shelter (ES)	--	139	139	306	355	49	16%
Transitional Housing (TH)	--	52	71	388	289	-99	-26%
Permanent Supportive Housing (PSH)	--	99	102	365	730	365	100%
Rapid Re-Housing (RRH)	--	--	--	18	855	837	4650%

Award Summary

	2014	2015	2016	2017	2018	2017-18 Change	% Change
Continuum of Care (CoC)	--	\$11,407,163	\$12,763,966	\$15,634,597	\$18,368,336	\$2,733,739	17%
Emergency Solutions Grants (ESG)	--	--	\$262,197	\$459,176	\$256,333	(\$202,843)	-44%