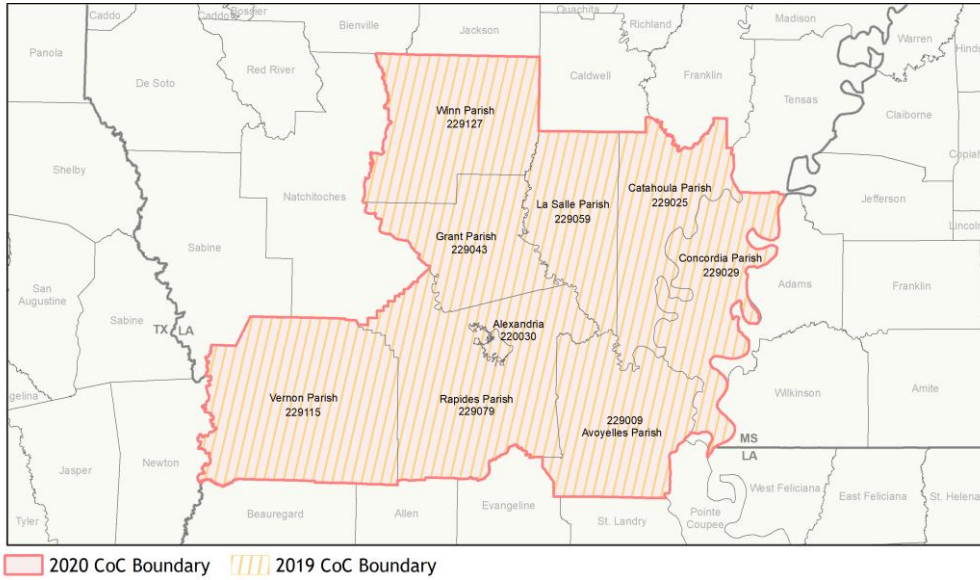
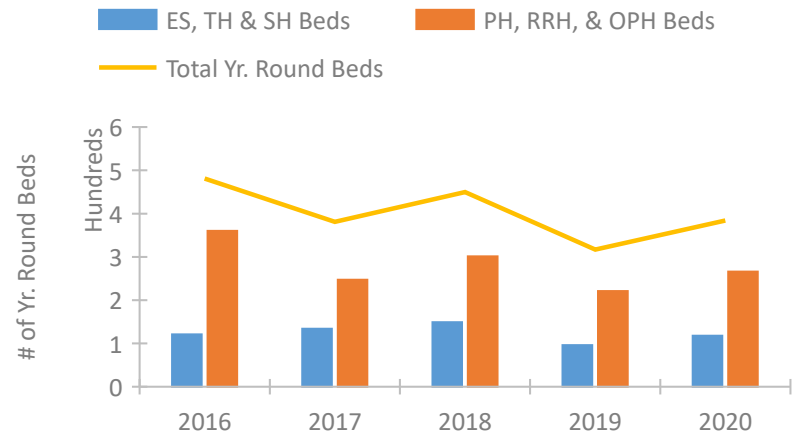


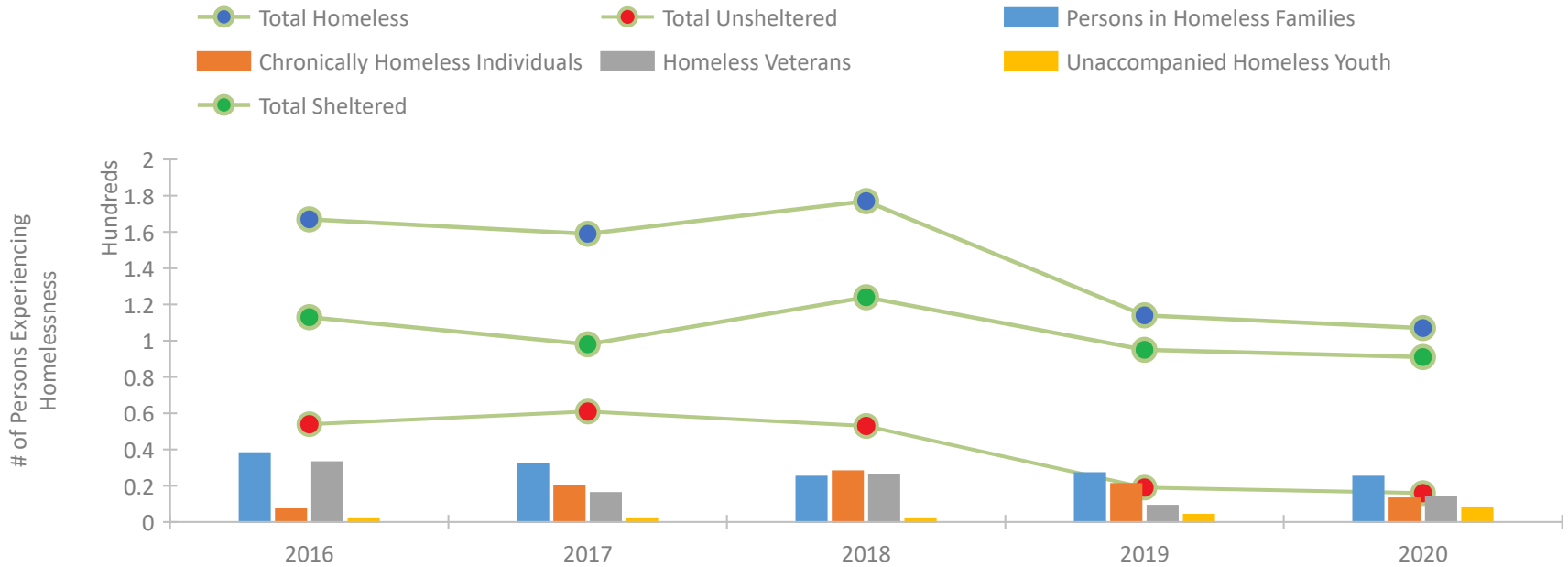
## CoC Performance Profile LA-507 Alexandria/Central Louisiana CoC



### Housing Inventory Count by Program Type

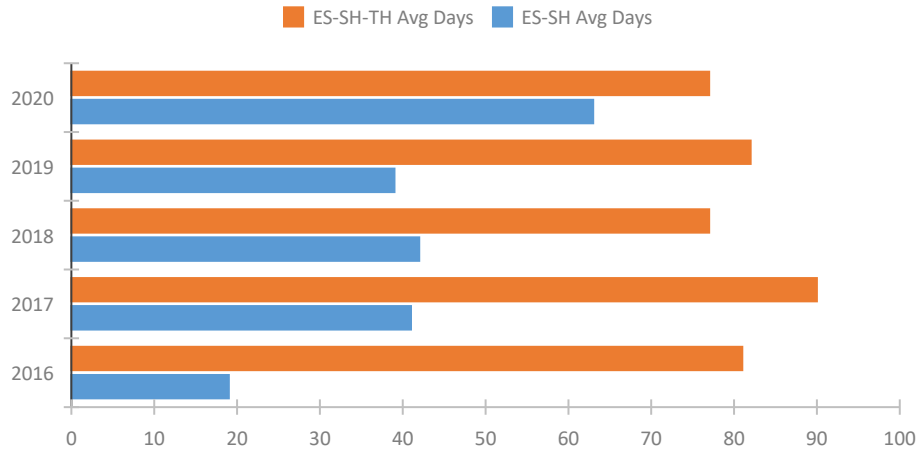


### Homeless Population – Point-in-Time (PIT) Count

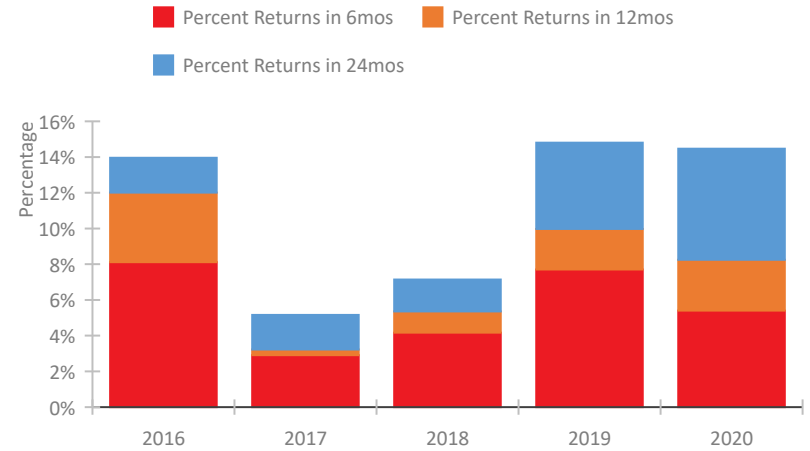


## CoC Performance Profile LA-507 Alexandria/Central Louisiana CoC

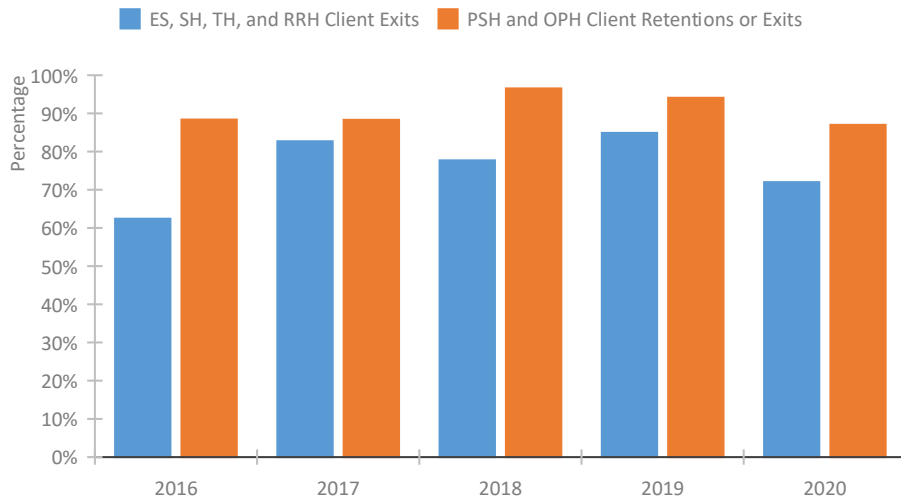
### Length of Time Homeless



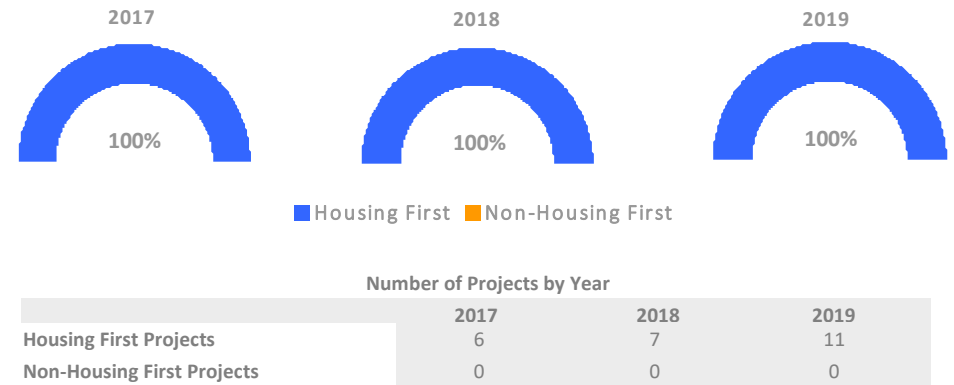
### Returns to Homelessness Over Time



### Exits to Permanent Housing by Program Type



### Proportion of Housing First Projects by Year\*



\*In 2020 HUD awarded renewal projects noncompetitively, therefore no new data was collected and Housing First data remains the same from 2019 to 2020.

**Data Summary: LA-507 Alexandria/Central Louisiana CoC**

**Point-In-Time Count Summary**

	2016	2017	2018	2019	2020	2019-20 Change	% Change
Number of Sheltered Persons in Families	38	32	25	27	25	-2	-7%
Number of Unsheltered Persons in Families	0	0	0	0	0	0	--
Number of Sheltered Individuals	75	66	99	68	66	-2	-3%
Number of Unsheltered Individuals	54	61	53	19	16	-3	-16%
<b>Total Homeless Persons</b>	<b>167</b>	<b>159</b>	<b>177</b>	<b>114</b>	<b>107</b>	<b>-7</b>	<b>-6%</b>
Number of Sheltered Families	10	11	9	10	9	-1	-10%
Number of Unsheltered Families	0	0	0	0	0	0	--
<b>Number of Total Families</b>	<b>10</b>	<b>11</b>	<b>9</b>	<b>10</b>	<b>9</b>	<b>-1</b>	<b>-10%</b>
Sheltered Chronically Homeless Individuals	2	3	10	10	5	-5	-50%
Unsheltered Chronically Homeless Individuals	5	17	18	11	8	-3	-27%
<b>Total Chronically Homeless Individuals</b>	<b>7</b>	<b>20</b>	<b>28</b>	<b>21</b>	<b>13</b>	<b>-8</b>	<b>-38%</b>
Sheltered Veterans	27	11	24	9	12	3	33%
Unsheltered Veterans	6	5	2	0	2	2	100%
<b>Total Veterans</b>	<b>33</b>	<b>16</b>	<b>26</b>	<b>9</b>	<b>14</b>	<b>5</b>	<b>56%</b>
Sheltered Unaccompanied Youth (up to 24)	1	0	1	3	7	4	133%
Unsheltered Unaccompanied Youth (up to 24)	1	2	1	1	1	0	-0%
<b>Total Unaccompanied Youth (up to 24)</b>	<b>2</b>	<b>2</b>	<b>2</b>	<b>4</b>	<b>8</b>	<b>4</b>	<b>100%</b>

**System Performance Measures Summary**

	2016	2017	2018	2018	2020	2019-20 Change	% Change
Average Length of Time Homeless (days)	81	90	77	82	77	-5	-6.1%
Rate People Return to Homelessness in 6 Months	8.1%	2.9%	4.2%	7.7%	5.4%	-2.3%	N/A
Number of People who are Homeless for the First Time	236	406	304	330	240	-90	-27.3%
Rate People Exit from ES, SH, TH, and RRH to PH	62.4%	82.7%	77.7%	84.9%	72.0%	-12.9%	N/A
Rate People in PSH and OPH Retain or Exit to PH	88.4%	88.3%	96.6%	94.1%	87.0%	-7.1%	N/A

**Housing Inventory Count Summary**

	2016	2017	2018	2019	2020	2019-20 Change	% Change
Emergency Shelter (ES)	49	65	64	48	58	10	21%
Transitional Housing (TH)	72	69	85	48	60	12	25%
Permanent Supportive Housing (PSH)	360	229	271	189	220	31	16%
Rapid Re-Housing (RRH)	--	18	30	32	46	14	44%

**Award Summary**

	2016	2017	2018	2019	2020	2019-20 Change	% Change
<b>Continuum of Care (CoC)</b>	\$719,772	\$737,471	\$695,385	\$732,556	\$755,375	\$22,819	3%
<b>ESG (LA state recipient - no direct funding)</b>	\$2,315,707	\$2,970,487	\$2,300,920	\$2,387,677	\$2,496,383	\$108,706	5%