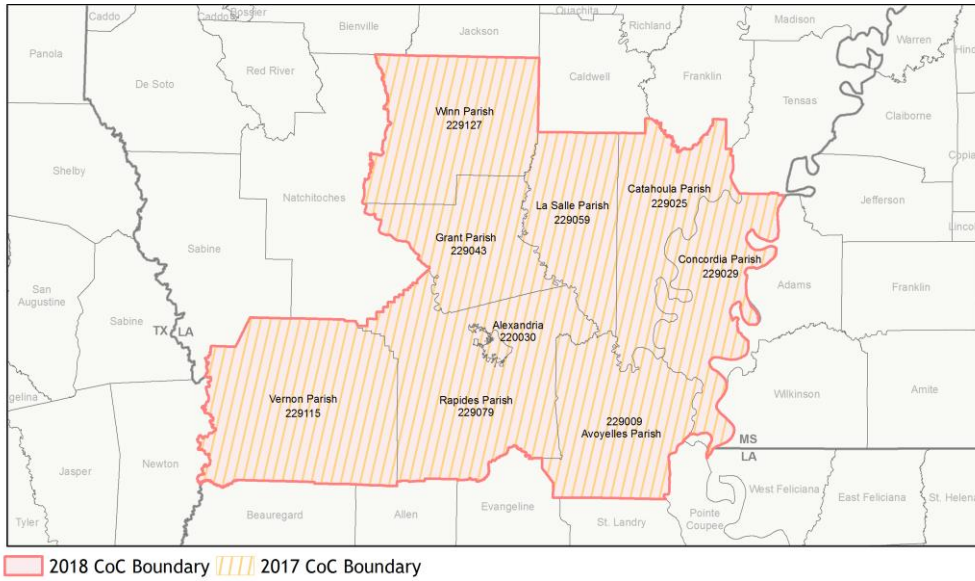
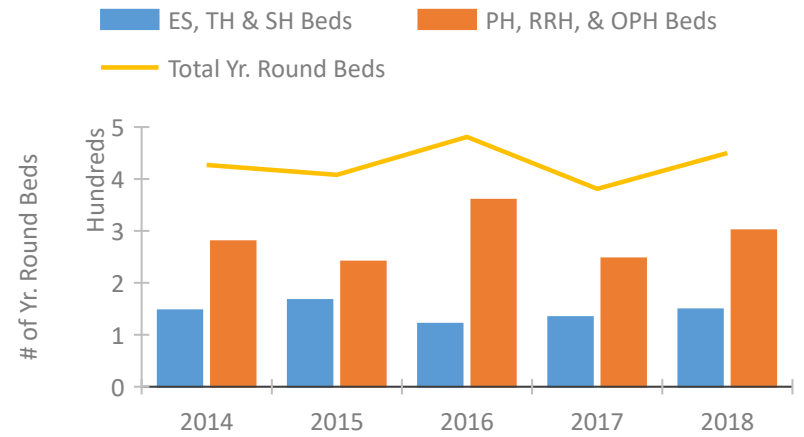


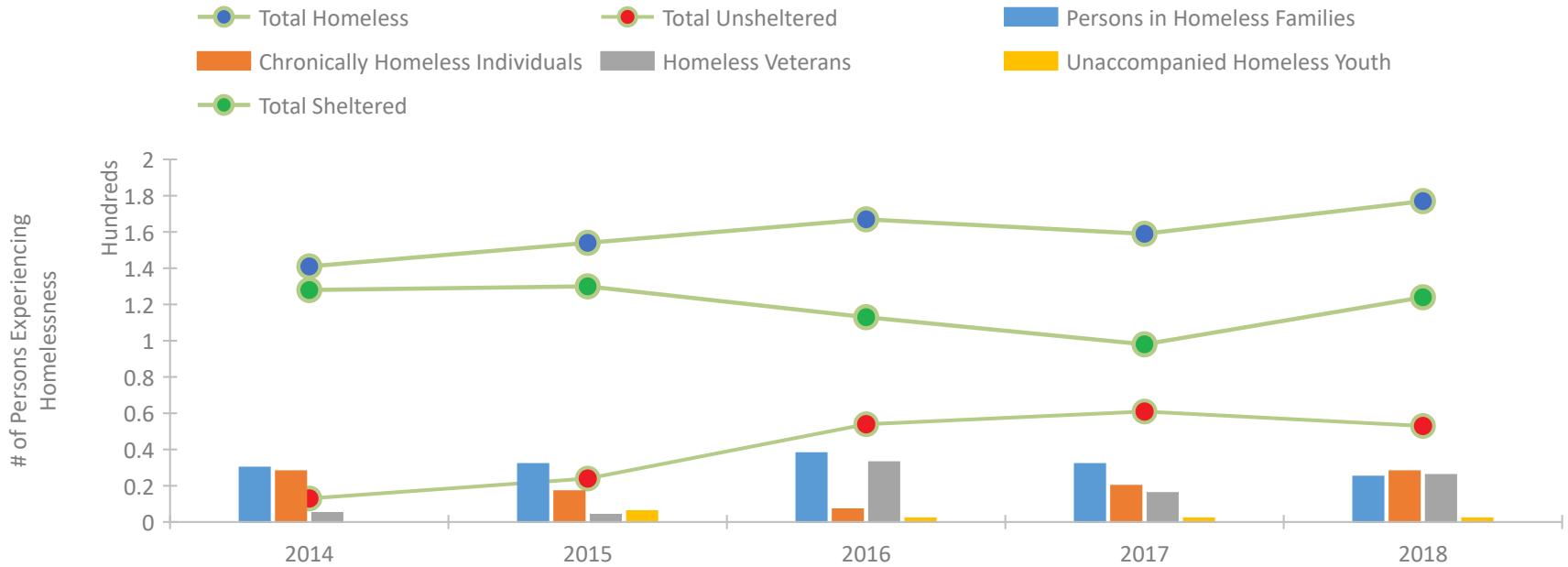
CoC Performance Profile LA-507 Alexandria/Central Louisiana CoC



Housing Inventory Count by Program Type

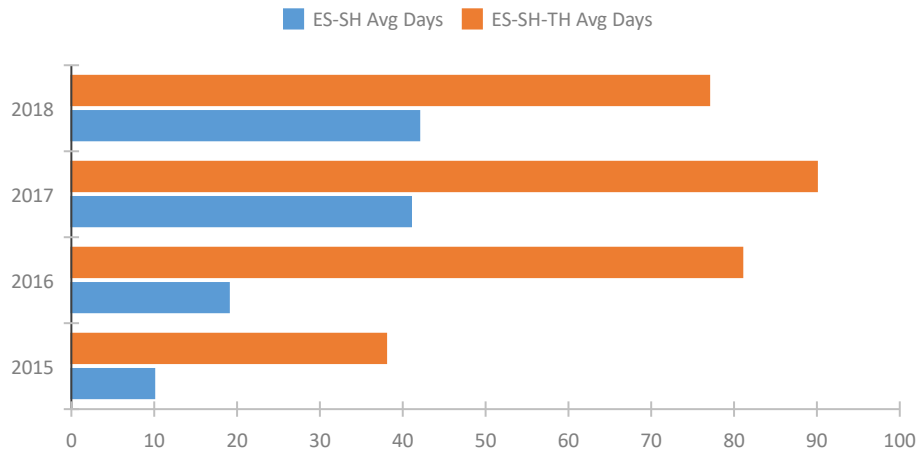


Homeless Population – Point-in-Time (PIT) Count

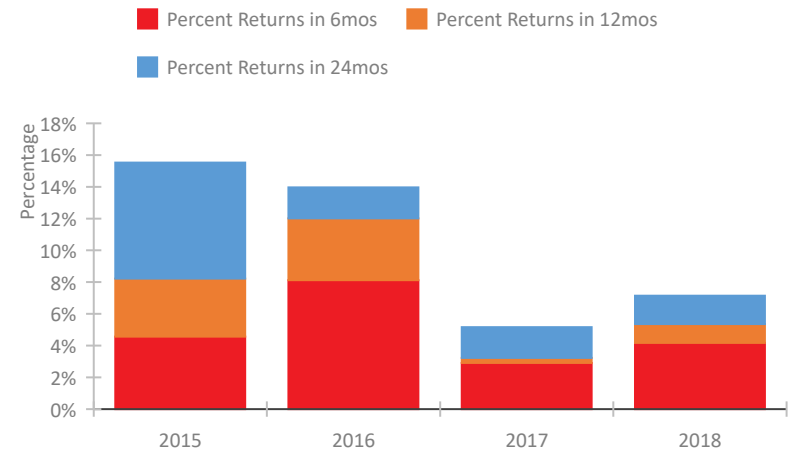


CoC Performance Profile LA-507 Alexandria/Central Louisiana CoC

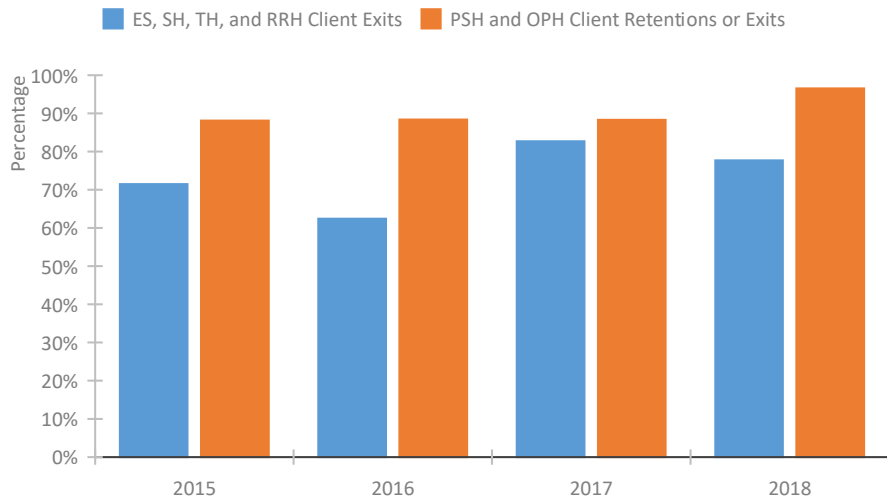
Length of Time Homeless



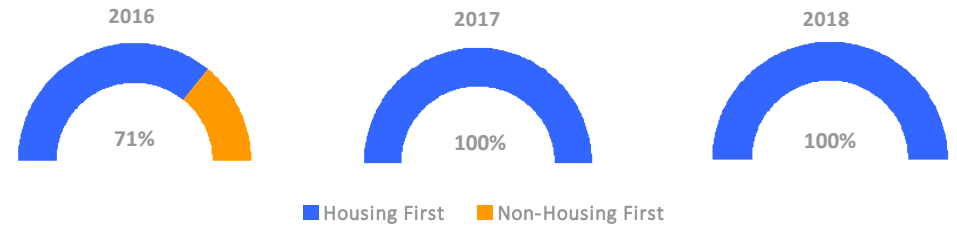
Returns to Homelessness Over Time



Exits to Permanent Housing by Program Type



Proportion of Housing First Projects by Year



Number of Projects by Year

	2016	2017	2018
Housing First Projects	5	6	7
Non-Housing First Projects	2	0	0

Data Summary: LA-507 Alexandria/Central Louisiana CoC

Point-In-Time Count Summary

	2014	2015	2016	2017	2018	2017-18 Change	% Change
Number of Sheltered Persons in Families	30	32	38	32	25	-7	-22%
Number of Unsheltered Persons in Families	0	0	0	0	0	0	--
Number of Sheltered Individuals	98	98	75	66	99	33	50%
Number of Unsheltered Individuals	13	24	54	61	53	-8	-13%
Total Homeless Persons	141	154	167	159	177	18	11%
Number of Sheltered Families	9	9	10	11	9	-2	-18%
Number of Unsheltered Families	0	0	0	0	0	0	--
Number of Total Families	9	9	10	11	9	-2	-18%
Sheltered Chronically Homeless Individuals	19	8	2	3	10	7	233%
Unsheltered Chronically Homeless Individuals	9	9	5	17	18	1	6%
Total Chronically Homeless Individuals	28	17	7	20	28	8	40%
Sheltered Veterans	2	1	27	11	24	13	118%
Unsheltered Veterans	3	3	6	5	2	-3	-60%
Total Veterans	5	4	33	16	26	10	62%
Sheltered Unaccompanied Youth (up to 24)	--	4	1	0	1	1	100%
Unsheltered Unaccompanied Youth (up to 24)	--	2	1	2	1	-1	-50%
Total Unaccompanied Youth (up to 24)	--	6	2	2	2	0	0%

System Performance Measures Summary

	2014	2015	2016	2017	2018	2017-18 Change	% Change
Average Length of Time Homeless (days)	N/A	38	81	90	77	-13	-14.4%
Rate People Return to Homelessness in 6 Months	N/A	4.6%	8.1%	2.9%	4.2%	1.3%	N/A
Number of People who are Homeless for the First Time	N/A	320	236	406	304	-102	-25.1%
Rate People Exit from ES, SH, TH, and RRH to PH	N/A	71.5%	62.4%	82.7%	77.7%	-5%	N/A
Rate People in PSH and OPH Retain or Exit to PH	N/A	88.1%	88.4%	88.3%	96.6%	8.2%	N/A

Housing Inventory Count Summary

	2014	2015	2016	2017	2018	2017-18 Change	% Change
Emergency Shelter (ES)	52	97	49	65	64	-1	-2%
Transitional Housing (TH)	95	70	72	69	85	16	23%
Permanent Supportive Housing (PSH)	280	236	360	229	271	42	18%
Rapid Re-Housing (RRH)	--	5	--	18	30	12	67%

Award Summary

	2014	2015	2016	2017	2018	2017-18 Change	% Change
Continuum of Care (CoC)	\$714,271	\$704,860	\$719,772	\$737,471	\$695,385	(\$42,086)	-6%
ESG (LA state recipient - no direct funding)	\$2,253,006	\$2,379,318	\$2,315,707	\$2,970,487	\$2,300,920	(\$669,567)	-23%