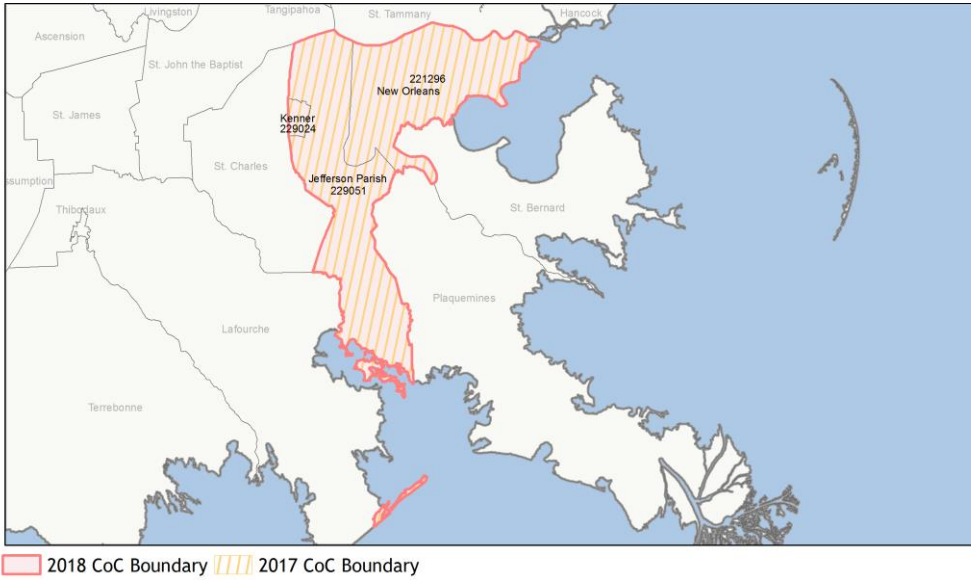
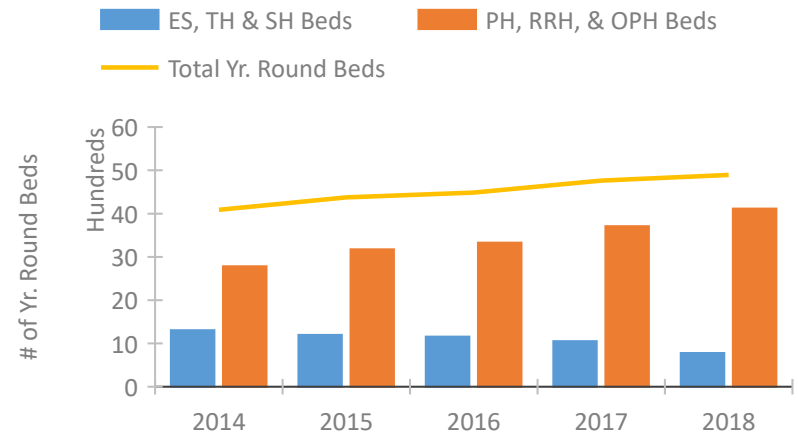


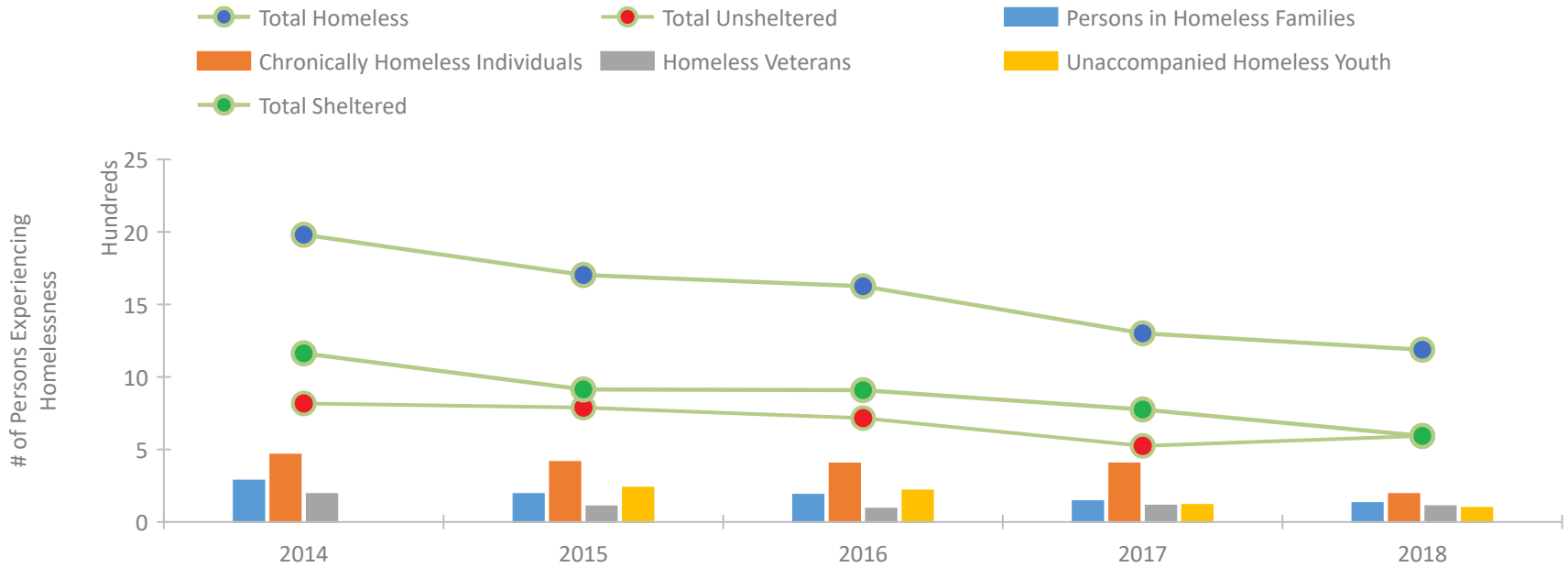
CoC Performance Profile LA-503 New Orleans/Jefferson Parish CoC



Housing Inventory Count by Program Type

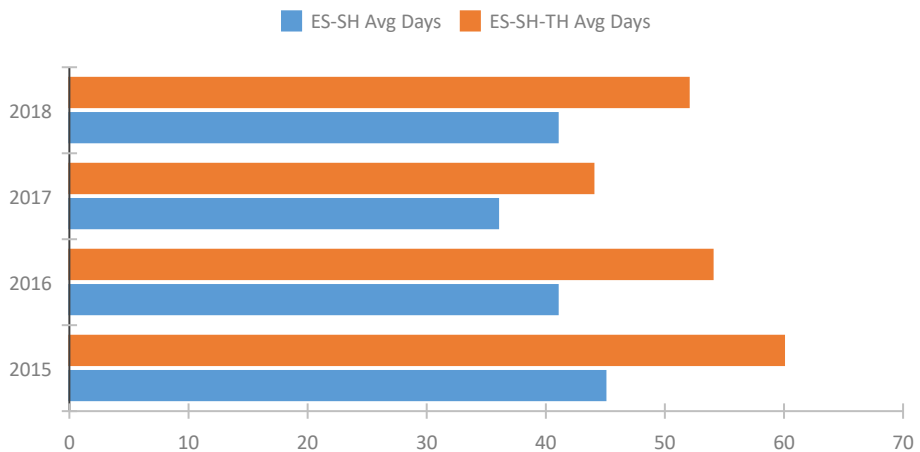


Homeless Population – Point-in-Time (PIT) Count

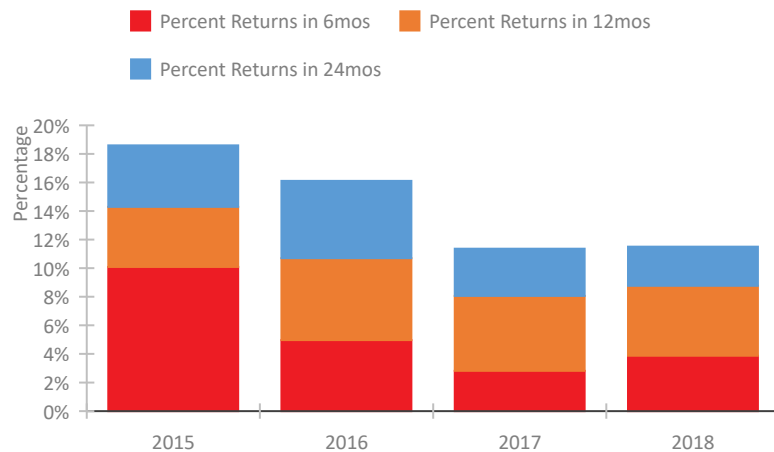


CoC Performance Profile LA-503 New Orleans/Jefferson Parish CoC

Length of Time Homeless



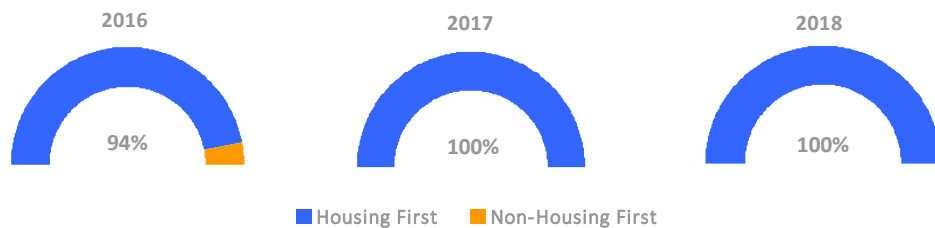
Returns to Homelessness Over Time



Exits to Permanent Housing by Program Type



Proportion of Housing First Projects by Year



Number of Projects by Year

	2016	2017	2018
Housing First Projects	46	48	47
Non-Housing First Projects	3	0	0

Data Summary: LA-503 New Orleans/Jefferson Parish CoC

Point-In-Time Count Summary

	2014	2015	2016	2017	2018	2017-18 Change	% Change
Number of Sheltered Persons in Families	286	190	178	135	124	-11	-8%
Number of Unsheltered Persons in Families	0	3	10	8	7	-1	-12%
Number of Sheltered Individuals	877	724	731	641	470	-171	-27%
Number of Unsheltered Individuals	818	786	707	517	587	70	14%
Total Homeless Persons	1,981	1,703	1,626	1,301	1,188	-113	-9%
Number of Sheltered Families	91	62	57	38	40	2	5%
Number of Unsheltered Families	0	1	4	3	2	-1	-33%
Number of Total Families	91	63	61	41	42	1	2%
Sheltered Chronically Homeless Individuals	70	101	118	124	45	-79	-64%
Unsheltered Chronically Homeless Individuals	395	313	285	280	148	-132	-47%
Total Chronically Homeless Individuals	465	414	403	404	193	-211	-52%
Sheltered Veterans	126	96	85	96	94	-2	-2%
Unsheltered Veterans	67	12	7	17	15	-2	-12%
Total Veterans	193	108	92	113	109	-4	-4%
Sheltered Unaccompanied Youth (up to 24)	--	103	108	88	79	-9	-10%
Unsheltered Unaccompanied Youth (up to 24)	--	134	110	30	19	-11	-37%
Total Unaccompanied Youth (up to 24)	--	237	218	118	98	-20	-17%

System Performance Measures Summary

	2014	2015	2016	2017	2018	2017-18 Change	% Change
Average Length of Time Homeless (days)	N/A	60	54	44	52	8	18.2%
Rate People Return to Homelessness in 6 Months	N/A	10.1%	5.0%	2.8%	3.9%	1.1%	N/A
Number of People who are Homeless for the First Time	N/A	4217	4527	4518	4145	-373	-8.3%
Rate People Exit from ES, SH, TH, and RRH to PH	N/A	70.8%	72.2%	71.8%	69.5%	-2.3%	N/A
Rate People in PSH and OPH Retain or Exit to PH	N/A	94.7%	96.2%	98.0%	98.2%	0.2%	N/A

Housing Inventory Count Summary

	2014	2015	2016	2017	2018	2017-18 Change	% Change
Emergency Shelter (ES)	606	569	557	643	474	-169	-26%
Safe Haven (SH)	15	10	15	20	35	15	75%
Transitional Housing (TH)	684	619	585	390	270	-120	-31%
Permanent Supportive Housing (PSH)	2,464	2,668	2,792	3,032	3,401	369	12%
Rapid Re-Housing (RRH)	193	310	361	665	702	37	6%
Other Permanent Housing (OPH)	--	--	13	13	13	0	0%

Award Summary

	2014	2015	2016	2017	2018	2017-18 Change	% Change
Continuum of Care (CoC)	\$16,779,545	\$18,367,757	\$18,924,229	\$19,076,053	\$21,224,142	\$2,148,089	11%
Emergency Solutions Grants (ESG)	\$1,109,685	\$1,236,063	\$1,237,091	\$1,236,340	\$1,229,773	(\$6,567)	-1%