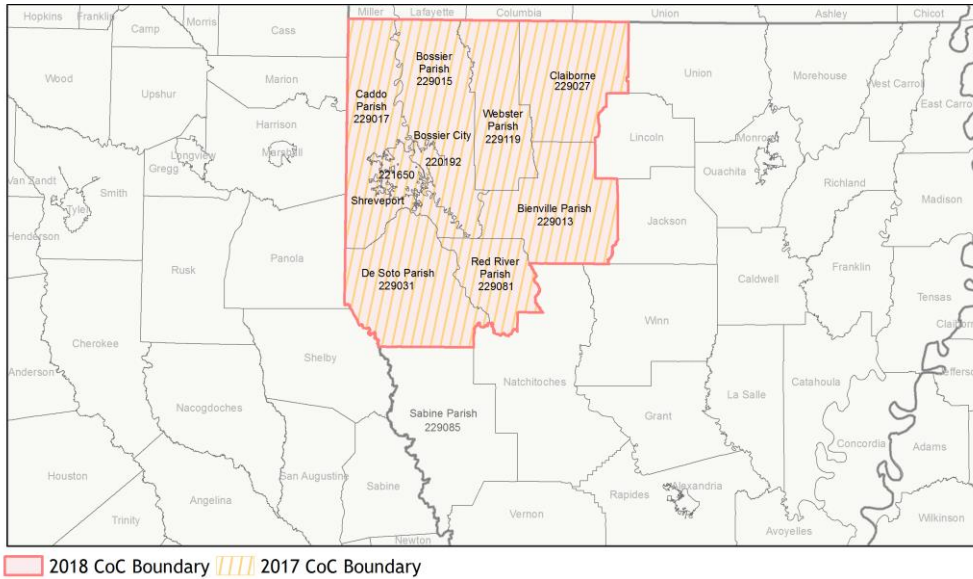
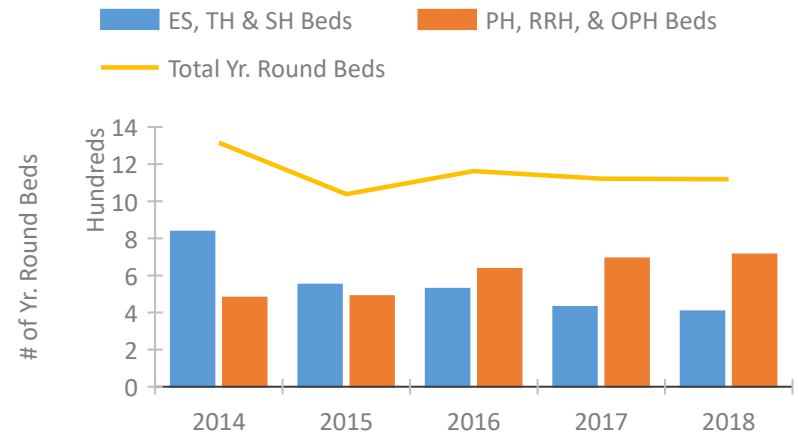


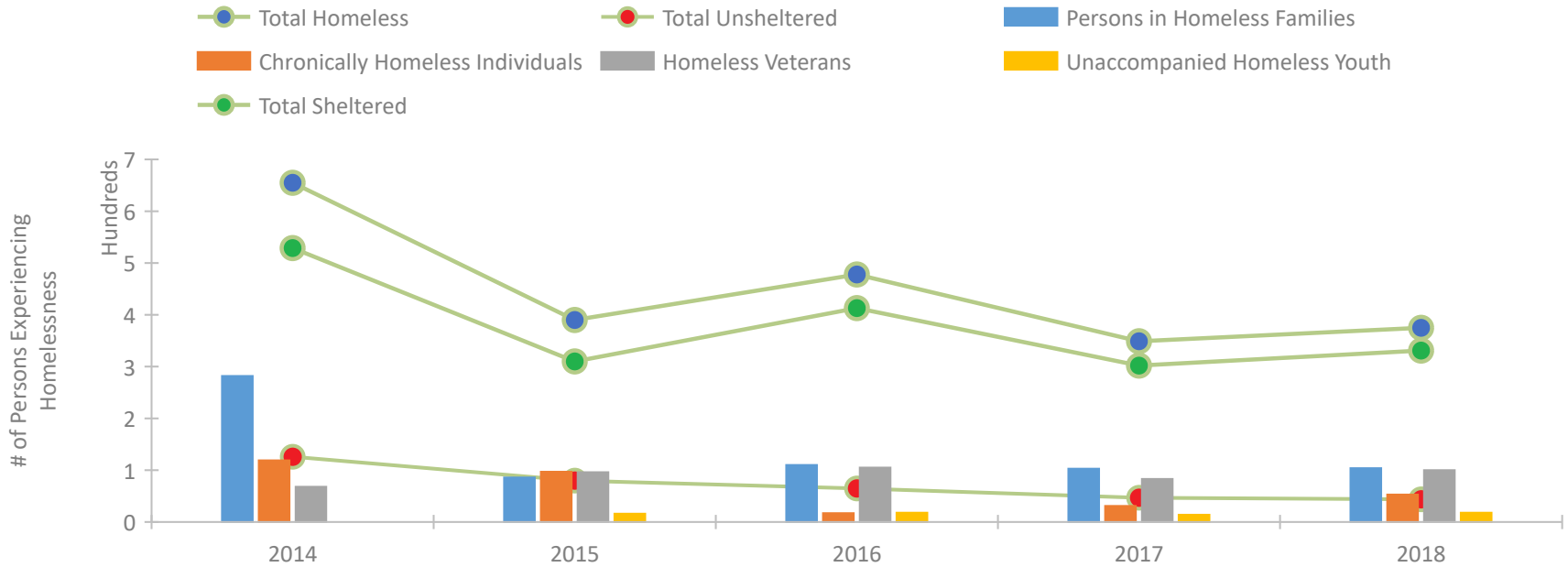
CoC Performance Profile LA-502 Shreveport, Bossier/Northwest Louisiana CoC



Housing Inventory Count by Program Type

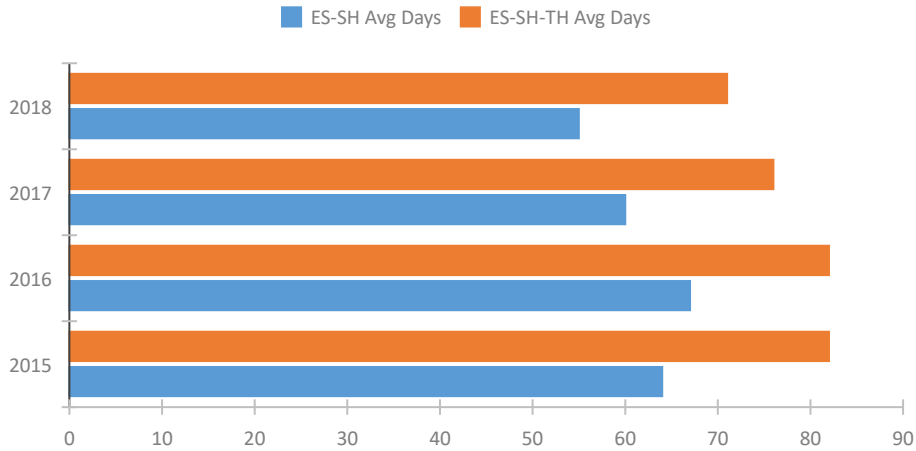


Homeless Population – Point-in-Time (PIT) Count

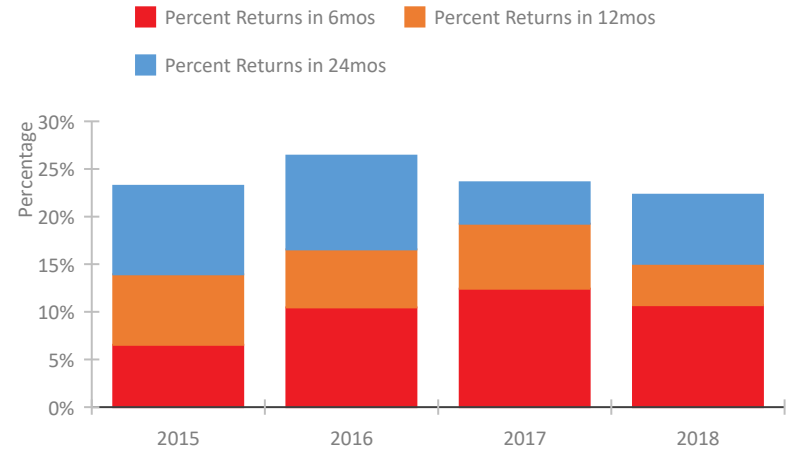


CoC Performance Profile LA-502 Shreveport, Bossier/Northwest Louisiana CoC

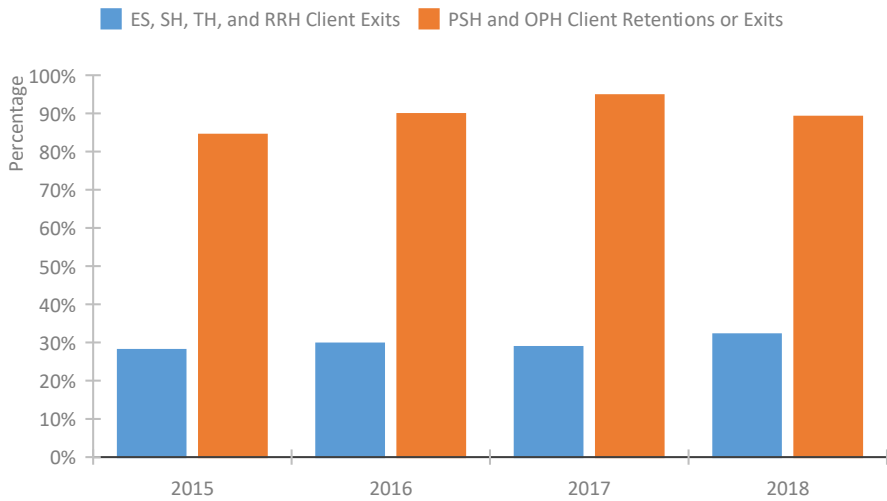
Length of Time Homeless



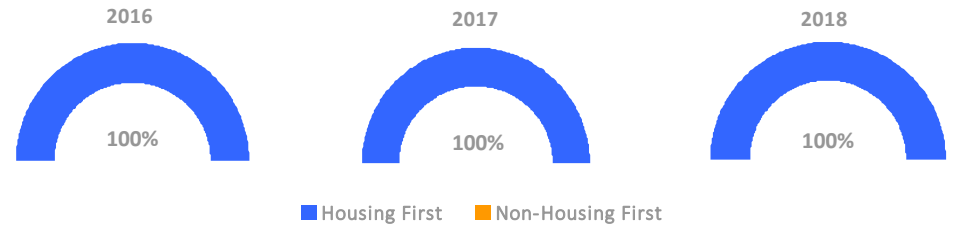
Returns to Homelessness Over Time



Exits to Permanent Housing by Program Type



Proportion of Housing First Projects by Year



Number of Projects by Year

	2016	2017	2018
Housing First Projects	12	12	10
Non-Housing First Projects	0	0	0

Data Summary: LA-502 Shreveport, Bossier/Northwest Louisiana CoC

Point-In-Time Count Summary

	2014	2015	2016	2017	2018	2017-18 Change	% Change
Number of Sheltered Persons in Families	282	86	110	103	104	1	1%
Number of Unsheltered Persons in Families	0	0	0	0	0	0	--
Number of Sheltered Individuals	247	224	303	199	227	28	14%
Number of Unsheltered Individuals	126	80	65	47	44	-3	-6%
Total Homeless Persons	655	390	478	349	375	26	7%
Number of Sheltered Families	84	31	38	33	32	-1	-3%
Number of Unsheltered Families	0	0	0	0	0	0	--
Number of Total Families	84	31	38	33	32	-1	-3%
Sheltered Chronically Homeless Individuals	47	45	7	8	33	25	312%
Unsheltered Chronically Homeless Individuals	72	52	10	23	20	-3	-13%
Total Chronically Homeless Individuals	119	97	17	31	53	22	71%
Sheltered Veterans	54	90	105	82	98	16	20%
Unsheltered Veterans	14	6	0	1	2	1	100%
Total Veterans	68	96	105	83	100	17	20%
Sheltered Unaccompanied Youth (up to 24)	--	14	18	14	16	2	14%
Unsheltered Unaccompanied Youth (up to 24)	--	2	0	0	2	2	100%
Total Unaccompanied Youth (up to 24)	--	16	18	14	18	4	29%

System Performance Measures Summary

	2014	2015	2016	2017	2018	2017-18 Change	% Change
Average Length of Time Homeless (days)	N/A	82	82	76	71	-5	-6.6%
Rate People Return to Homelessness in 6 Months	N/A	6.5%	10.5%	12.4%	10.7%	-1.7%	N/A
Number of People who are Homeless for the First Time	N/A	1581	1447	1356	1090	-266	-19.6%
Rate People Exit from ES, SH, TH, and RRH to PH	N/A	28.1%	29.7%	28.8%	32.1%	3.3%	N/A
Rate People in PSH and OPH Retain or Exit to PH	N/A	84.4%	89.8%	94.8%	89.1%	-5.6%	N/A

Housing Inventory Count Summary

	2014	2015	2016	2017	2018	2017-18 Change	% Change
Emergency Shelter (ES)	452	431	388	332	320	-12	-4%
Safe Haven (SH)	10	32	35	25	25	0	0%
Transitional Housing (TH)	374	87	105	73	61	-12	-16%
Permanent Supportive Housing (PSH)	480	350	374	483	541	58	12%
Rapid Re-Housing (RRH)	--	138	261	209	172	-37	-18%

Award Summary

	2014	2015	2016	2017	2018	2017-18 Change	% Change
Continuum of Care (CoC)	\$4,026,441	\$3,890,343	\$3,884,305	\$4,039,037	\$4,010,367	(\$28,670)	-1%
Emergency Solutions Grants (ESG)	\$143,332	\$148,622	\$140,060	\$143,082	\$148,890	\$5,808	4%