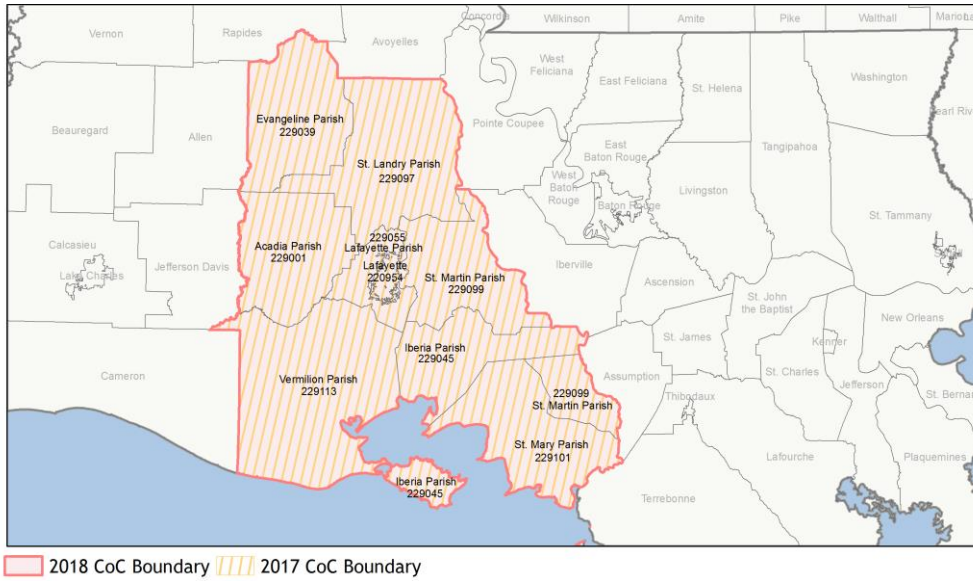
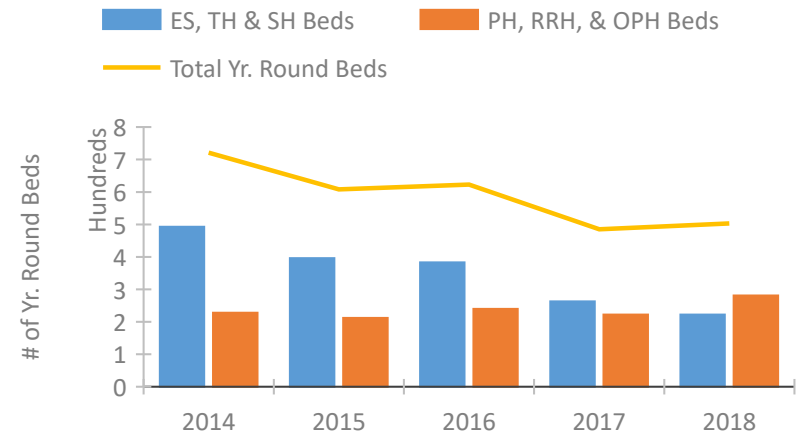


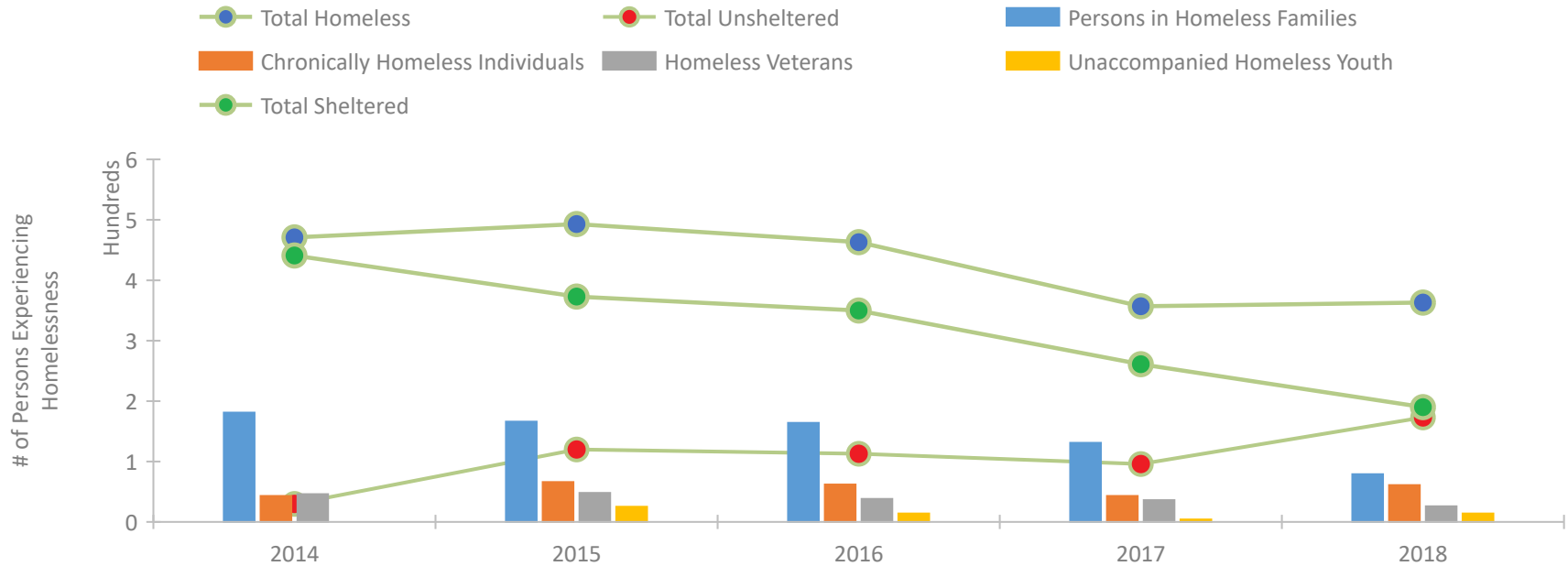
CoC Performance Profile LA-500 Lafayette/Acadiana Regional CoC



Housing Inventory Count by Program Type

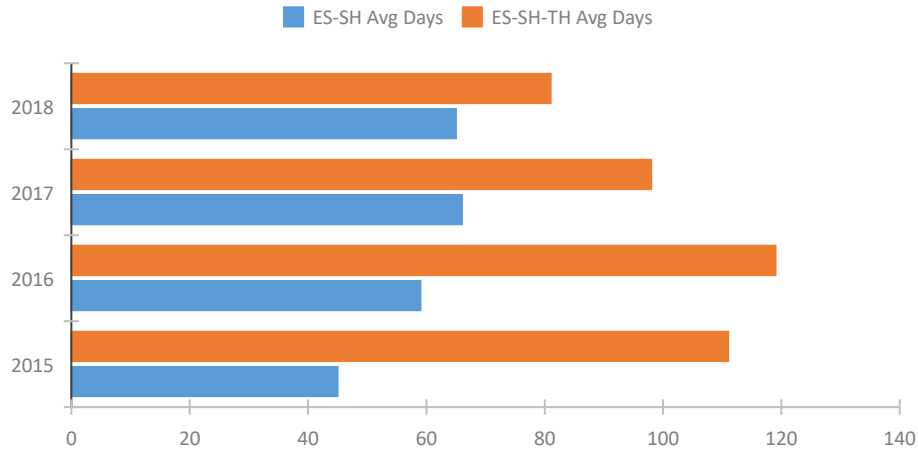


Homeless Population – Point-in-Time (PIT) Count

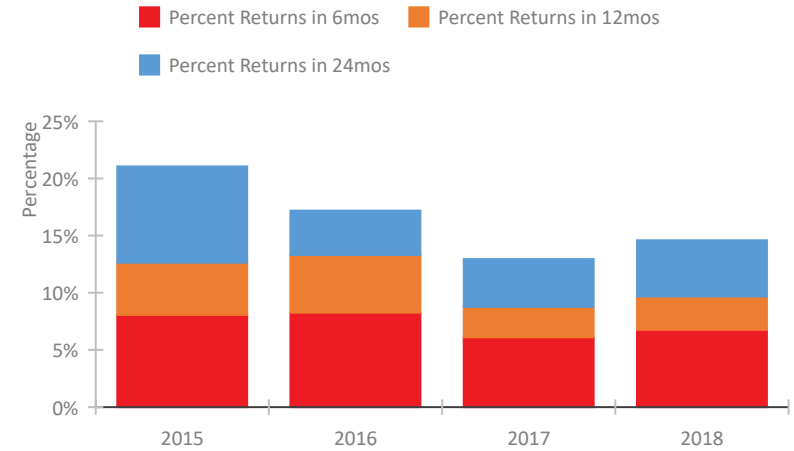


CoC Performance Profile LA-500 Lafayette/Acadiana Regional CoC

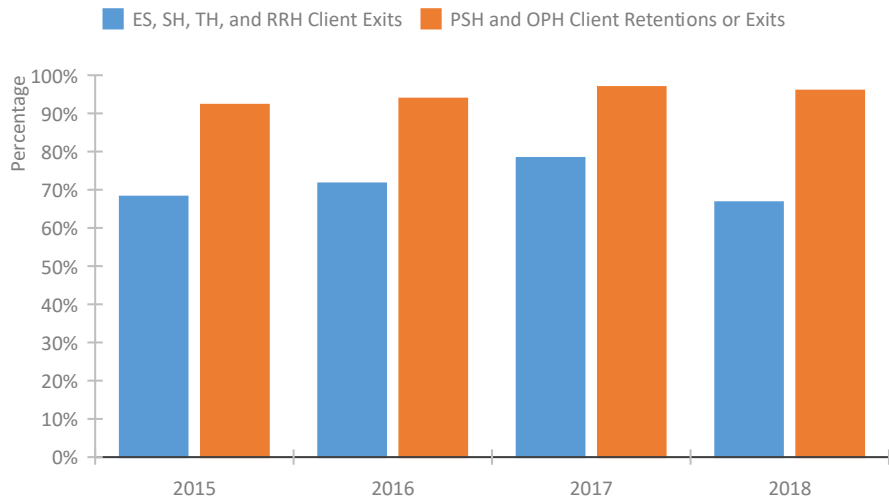
Length of Time Homeless



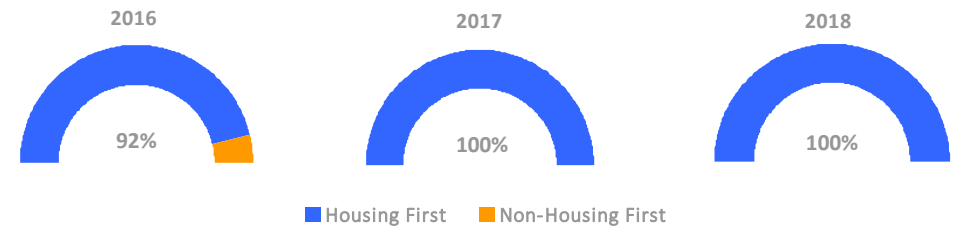
Returns to Homelessness Over Time



Exits to Permanent Housing by Program Type



Proportion of Housing First Projects by Year



Number of Projects by Year

	2016	2017	2018
Housing First Projects	12	12	12
Non-Housing First Projects	1	0	0

Data Summary: LA-500 Lafayette/Acadiana Regional CoC

Point-In-Time Count Summary

	2014	2015	2016	2017	2018	2017-18 Change	% Change
Number of Sheltered Persons in Families	181	164	164	114	77	-37	-32%
Number of Unsheltered Persons in Families	0	2	0	17	2	-15	-88%
Number of Sheltered Individuals	260	209	186	147	113	-34	-23%
Number of Unsheltered Individuals	30	118	113	79	171	92	116%
Total Homeless Persons	471	493	463	357	363	6	2%
Number of Sheltered Families	57	57	48	33	23	-10	-30%
Number of Unsheltered Families	0	1	0	4	1	-3	-75%
Number of Total Families	57	58	48	37	24	-13	-35%
Sheltered Chronically Homeless Individuals	35	31	13	20	15	-5	-25%
Unsheltered Chronically Homeless Individuals	8	35	49	23	46	23	100%
Total Chronically Homeless Individuals	43	66	62	43	61	18	42%
Sheltered Veterans	40	38	27	30	20	-10	-33%
Unsheltered Veterans	6	10	11	6	6	0	0%
Total Veterans	46	48	38	36	26	-10	-28%
Sheltered Unaccompanied Youth (up to 24)	--	11	9	2	7	5	250%
Unsheltered Unaccompanied Youth (up to 24)	--	14	5	2	7	5	250%
Total Unaccompanied Youth (up to 24)	--	25	14	4	14	10	250%

System Performance Measures Summary

	2014	2015	2016	2017	2018	2017-18 Change	% Change
Average Length of Time Homeless (days)	N/A	111	119	98	81	-17	-17.3%
Rate People Return to Homelessness in 6 Months	N/A	8.1%	8.3%	6.1%	6.8%	0.7%	N/A
Number of People who are Homeless for the First Time	N/A	933	756	782	710	-72	-9.2%
Rate People Exit from ES, SH, TH, and RRH to PH	N/A	68.2%	71.6%	78.3%	66.7%	-11.6%	N/A
Rate People in PSH and OPH Retain or Exit to PH	N/A	92.2%	93.9%	96.9%	96.0%	-1%	N/A

Housing Inventory Count Summary

	2014	2015	2016	2017	2018	2017-18 Change	% Change
Emergency Shelter (ES)	196	188	182	140	136	-4	-3%
Safe Haven (SH)	--	--	--	--	4	--	--
Transitional Housing (TH)	297	208	201	123	82	-41	-33%
Permanent Supportive Housing (PSH)	168	180	220	215	197	-18	-8%
Rapid Re-Housing (RRH)	35	5	20	7	84	77	1100%

Award Summary

	2014	2015	2016	2017	2018	2017-18 Change	% Change
Continuum of Care (CoC)	\$2,735,010	\$2,474,843	\$2,477,638	\$2,612,552	\$2,840,362	\$227,810	9%
ESG (LA state recipient - no direct funding)	\$2,253,006	\$2,379,318	\$2,315,707	\$2,970,487	\$2,300,920	(\$669,567)	-23%