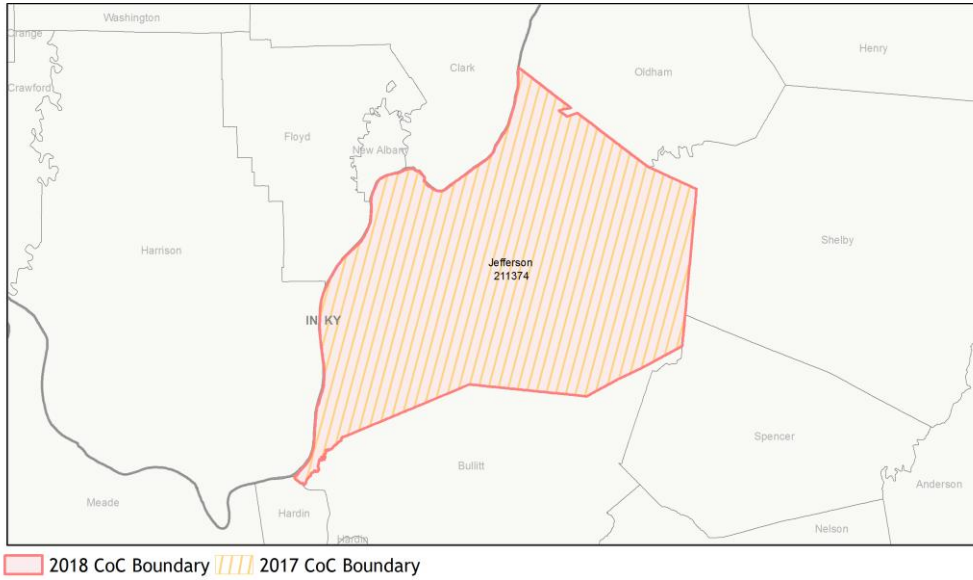
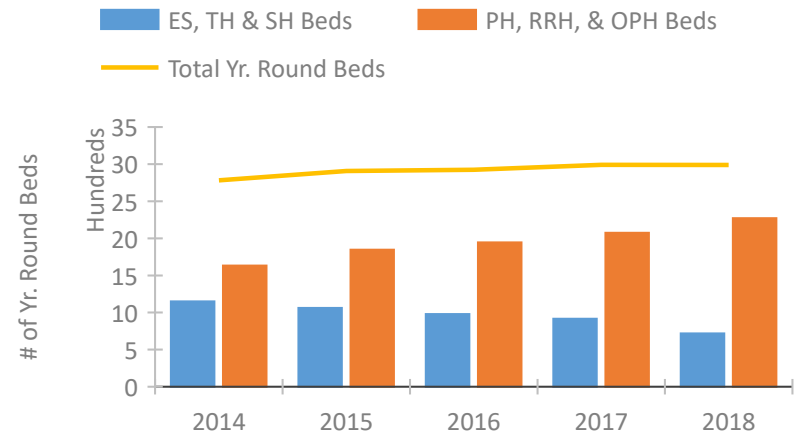


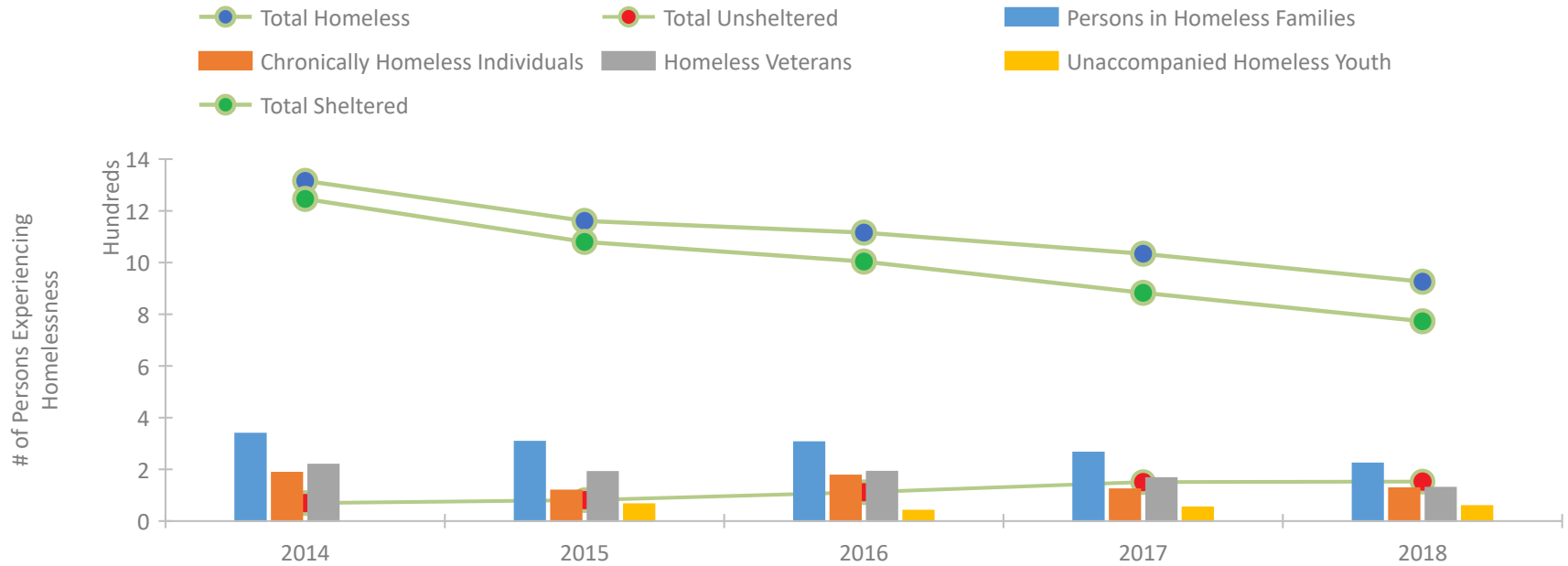
CoC Performance Profile KY-501 Louisville-Jefferson County CoC



Housing Inventory Count by Program Type

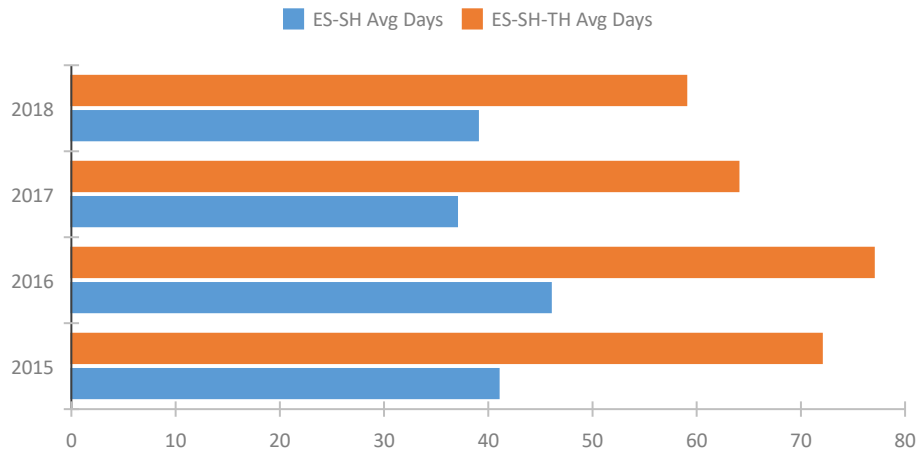


Homeless Population – Point-in-Time (PIT) Count

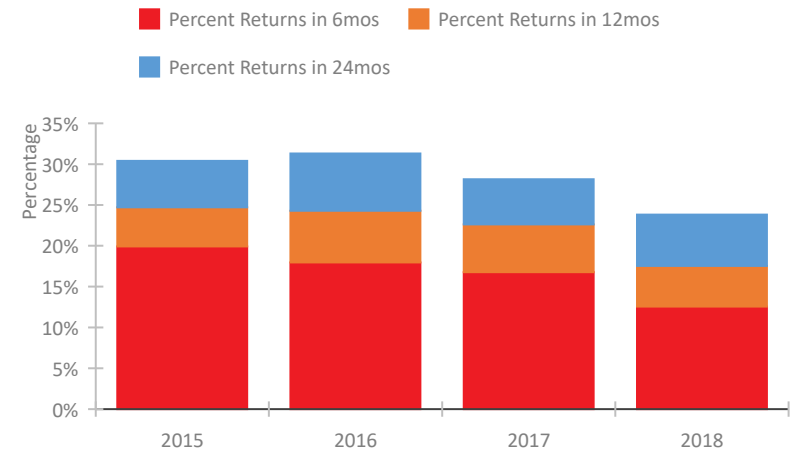


CoC Performance Profile KY-501 Louisville-Jefferson County CoC

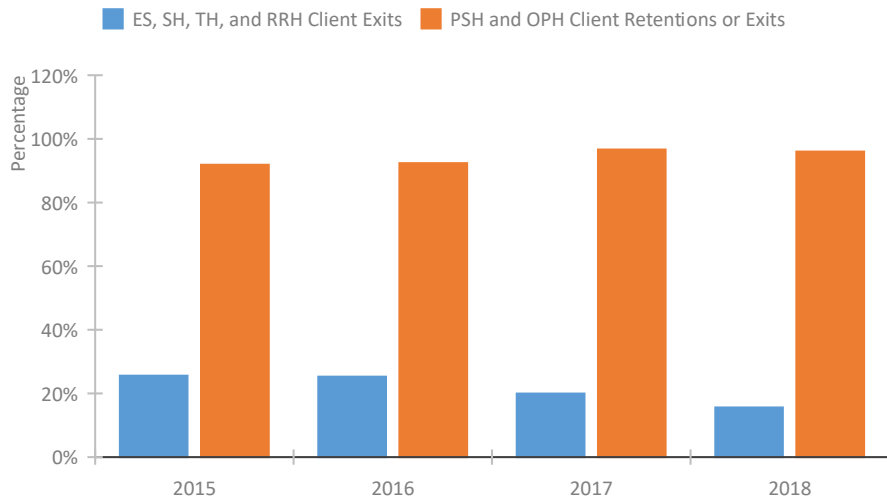
Length of Time Homeless



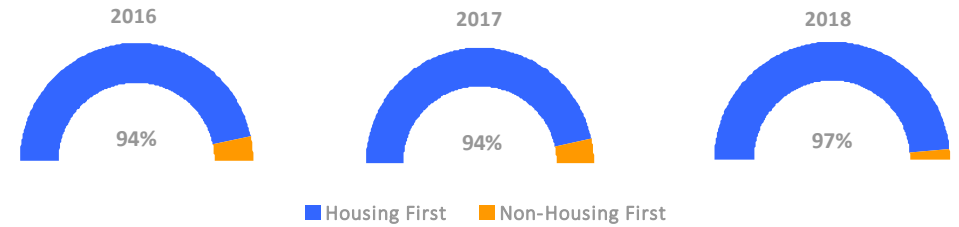
Returns to Homelessness Over Time



Exits to Permanent Housing by Program Type



Proportion of Housing First Projects by Year



Number of Projects by Year

	2016	2017	2018
Housing First Projects	29	29	28
Non-Housing First Projects	2	2	1

Data Summary: KY-501 Louisville-Jefferson County CoC

Point-In-Time Count Summary

	2014	2015	2016	2017	2018	2017-18 Change	% Change
Number of Sheltered Persons in Families	338	297	303	263	218	-45	-17%
Number of Unsheltered Persons in Families	0	10	2	2	5	3	150%
Number of Sheltered Individuals	908	783	701	620	555	-65	-10%
Number of Unsheltered Individuals	70	71	110	149	148	-1	-1%
Total Homeless Persons	1,316	1,161	1,116	1,034	926	-108	-10%
Number of Sheltered Families	118	108	99	87	68	-19	-22%
Number of Unsheltered Families	0	2	1	1	1	0	0%
Number of Total Families	118	110	100	88	69	-19	-22%
Sheltered Chronically Homeless Individuals	131	107	101	87	106	19	22%
Unsheltered Chronically Homeless Individuals	56	11	75	36	21	-15	-42%
Total Chronically Homeless Individuals	187	118	176	123	127	4	3%
Sheltered Veterans	209	179	167	151	115	-36	-24%
Unsheltered Veterans	9	11	24	15	14	-1	-7%
Total Veterans	218	190	191	166	129	-37	-22%
Sheltered Unaccompanied Youth (up to 24)	--	56	37	48	49	1	2%
Unsheltered Unaccompanied Youth (up to 24)	--	9	3	5	9	4	80%
Total Unaccompanied Youth (up to 24)	--	65	40	53	58	5	9%

System Performance Measures Summary

	2014	2015	2016	2017	2018	2017-18 Change	% Change
Average Length of Time Homeless (days)	N/A	72	77	64	59	-5	-7.8%
Rate People Return to Homelessness in 6 Months	N/A	19.9%	18.0%	16.8%	12.5%	-4.2%	N/A
Number of People who are Homeless for the First Time	N/A	3836	3324	3379	3413	34	1%
Rate People Exit from ES, SH, TH, and RRH to PH	N/A	25.6%	25.3%	19.9%	15.6%	-4.3%	N/A
Rate People in PSH and OPH Retain or Exit to PH	N/A	91.8%	92.4%	96.7%	96.0%	-0.6%	N/A

Housing Inventory Count Summary

	2014	2015	2016	2017	2018	2017-18 Change	% Change
Emergency Shelter (ES)	556	549	544	511	474	-37	-7%
Transitional Housing (TH)	583	513	435	406	244	-162	-40%
Permanent Supportive Housing (PSH)	1,577	1,687	1,832	1,689	1,612	-77	-5%
Rapid Re-Housing (RRH)	55	62	82	123	331	208	169%
Other Permanent Housing (OPH)	--	98	--	263	328	65	25%

Award Summary

	2014	2015	2016	2017	2018	2017-18 Change	% Change
Continuum of Care (CoC)	\$9,184,304	\$9,064,742	\$9,448,427	\$9,551,760	\$9,910,618	\$358,858	4%
Emergency Solutions Grants (ESG)	\$848,884	\$927,151	\$927,562	\$1,478,479	\$922,491	(\$555,988)	-38%
Youth Homelessness Demonstration Program (YHDP)	N/A	N/A	--	\$3,452,520	--	--	--