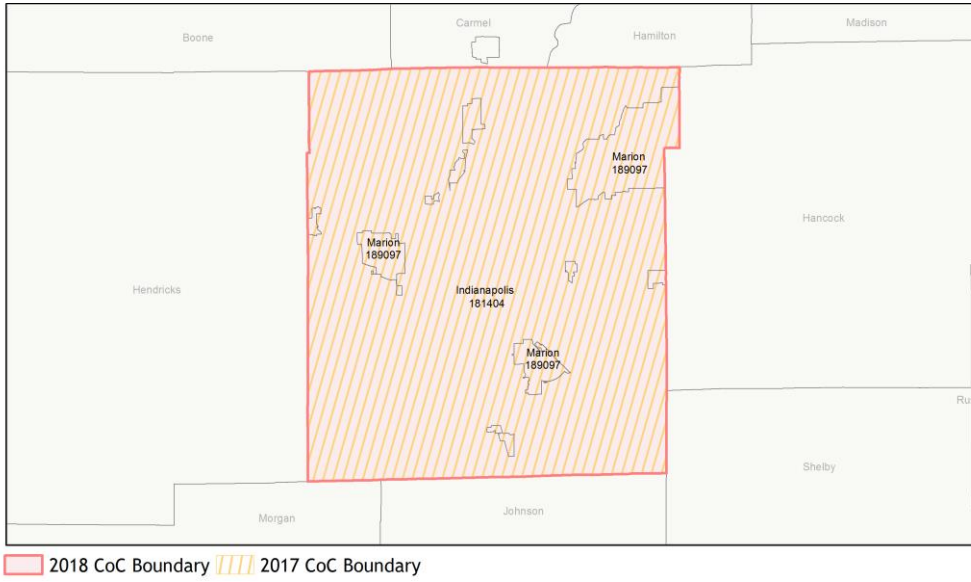
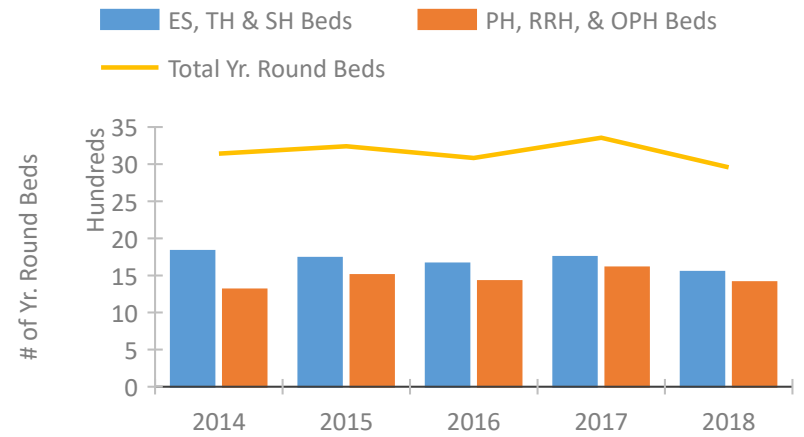


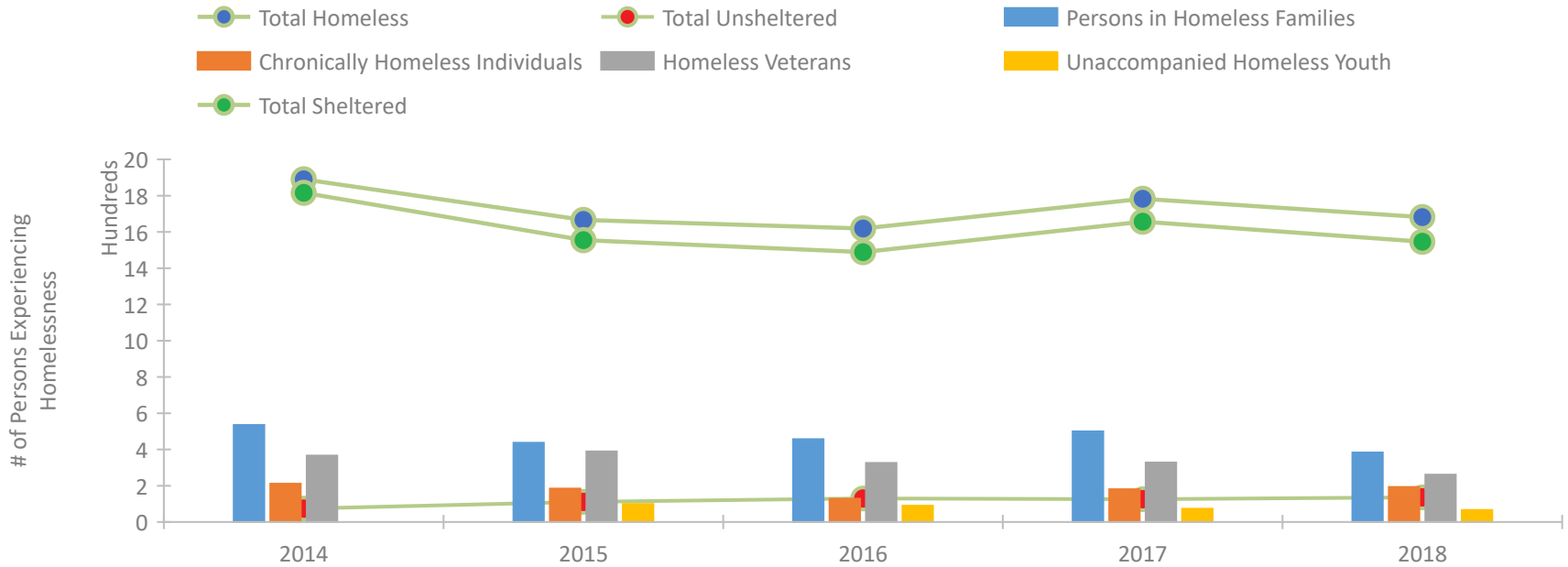
CoC Performance Profile IN-503 Indianapolis CoC



Housing Inventory Count by Program Type

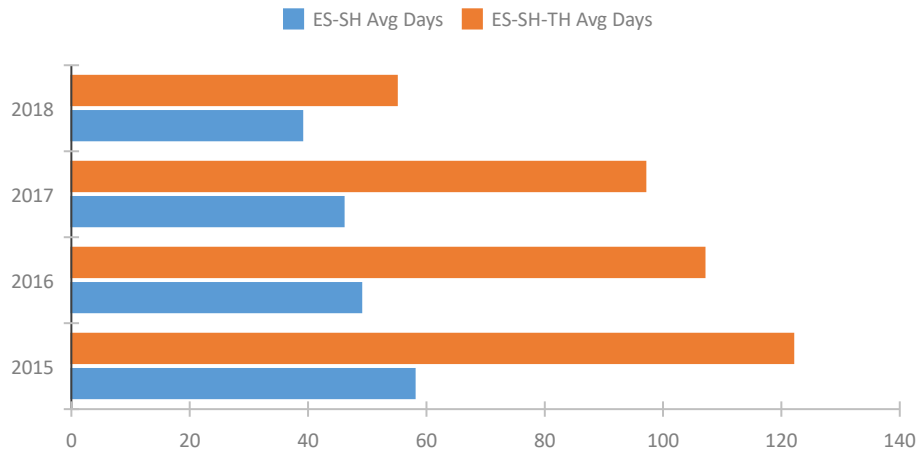


Homeless Population – Point-in-Time (PIT) Count

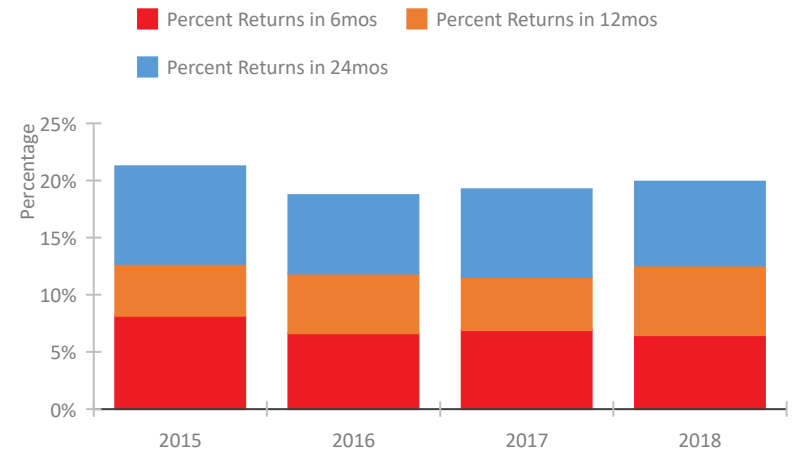


CoC Performance Profile IN-503 Indianapolis CoC

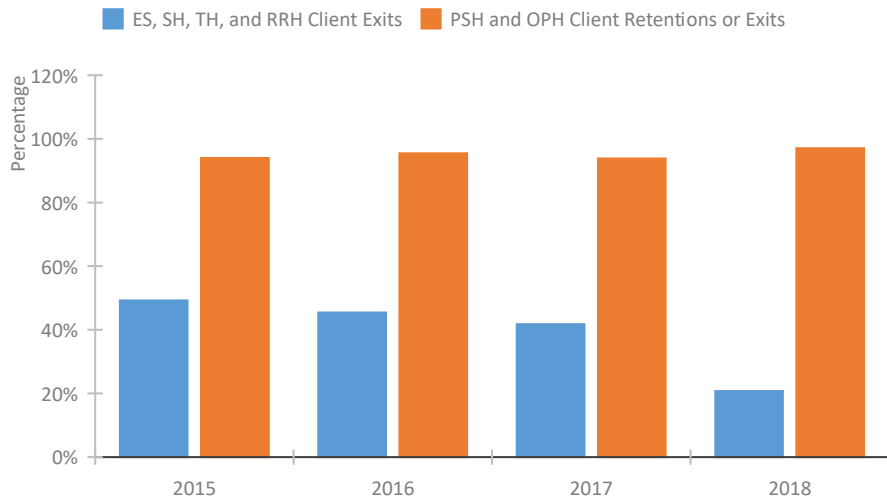
Length of Time Homeless



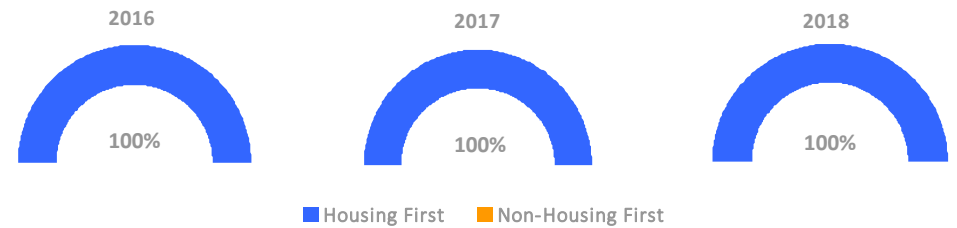
Returns to Homelessness Over Time



Exits to Permanent Housing by Program Type



Proportion of Housing First Projects by Year



Number of Projects by Year

	2016	2017	2018
Housing First Projects	25	22	21
Non-Housing First Projects	0	0	0

Data Summary: IN-503 Indianapolis CoC

Point-In-Time Count Summary

	2014	2015	2016	2017	2018	2017-18 Change	% Change
Number of Sheltered Persons in Families	535	429	457	500	383	-117	-23%
Number of Unsheltered Persons in Families	0	8	0	0	0	0	--
Number of Sheltered Individuals	1,281	1,126	1,032	1,157	1,163	6	1%
Number of Unsheltered Individuals	74	103	130	126	136	10	8%
Total Homeless Persons	1,890	1,666	1,619	1,783	1,682	-101	-6%
Number of Sheltered Families	162	134	137	158	128	-30	-19%
Number of Unsheltered Families	0	2	0	0	0	0	--
Number of Total Families	162	136	137	158	128	-30	-19%
Sheltered Chronically Homeless Individuals	183	137	76	139	147	8	6%
Unsheltered Chronically Homeless Individuals	28	47	52	42	46	4	10%
Total Chronically Homeless Individuals	211	184	128	181	193	12	7%
Sheltered Veterans	359	376	317	313	249	-64	-20%
Unsheltered Veterans	7	13	9	15	12	-3	-20%
Total Veterans	366	389	326	328	261	-67	-20%
Sheltered Unaccompanied Youth (up to 24)	--	89	76	63	57	-6	-10%
Unsheltered Unaccompanied Youth (up to 24)	--	10	14	10	9	-1	-10%
Total Unaccompanied Youth (up to 24)	--	99	90	73	66	-7	-10%

System Performance Measures Summary

	2014	2015	2016	2017	2018	2017-18 Change	% Change
Average Length of Time Homeless (days)	N/A	122	107	97	55	-42	-43.3%
Rate People Return to Homelessness in 6 Months	N/A	8.2%	6.6%	6.9%	6.5%	-0.4%	N/A
Number of People who are Homeless for the First Time	N/A	2594	2759	2716	6548	3,832	141.1%
Rate People Exit from ES, SH, TH, and RRH to PH	N/A	49.2%	45.4%	41.8%	20.8%	-21%	N/A
Rate People in PSH and OPH Retain or Exit to PH	N/A	94.0%	95.5%	93.8%	97.0%	3.2%	N/A

Housing Inventory Count Summary

	2014	2015	2016	2017	2018	2017-18 Change	% Change
Emergency Shelter (ES)	887	908	901	1,034	1,016	-18	-2%
Safe Haven (SH)	25	25	25	25	75	50	200%
Transitional Housing (TH)	919	804	735	691	457	-234	-34%
Permanent Supportive Housing (PSH)	1,162	1,112	1,208	1,276	1,185	-91	-7%
Rapid Re-Housing (RRH)	103	295	117	294	178	-116	-39%
Other Permanent Housing (OPH)	46	98	98	37	47	10	27%

Award Summary

	2014	2015	2016	2017	2018	2017-18 Change	% Change
Continuum of Care (CoC)	\$4,743,246	\$4,404,410	\$5,030,641	\$5,255,658	\$5,575,184	\$319,526	6%
Emergency Solutions Grants (ESG)	\$695,544	\$749,167	\$739,279	\$1,350,303	\$743,746	(\$606,557)	-45%
Youth Homelessness Demonstration Program (YHDP)	N/A	N/A	--	--	\$3,881,278	--	--