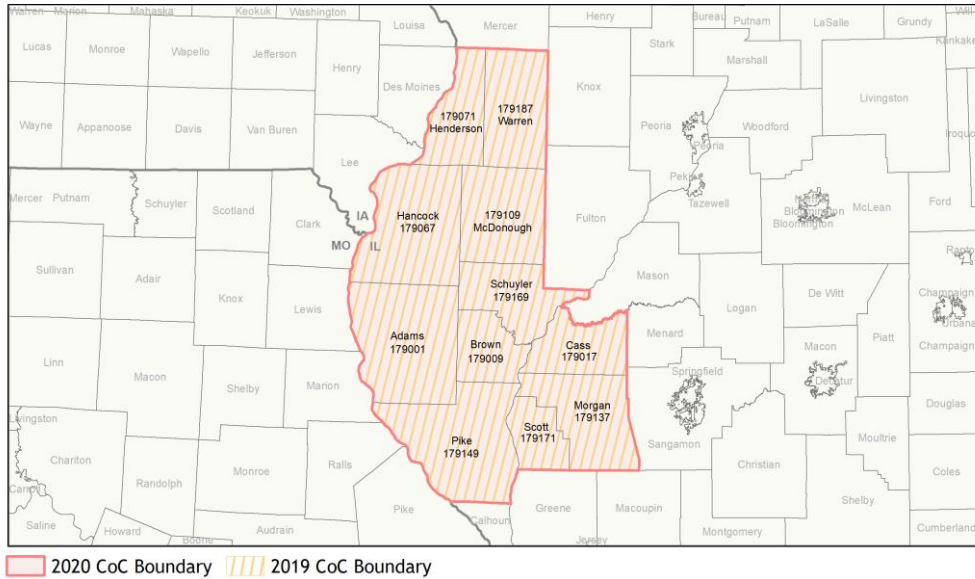
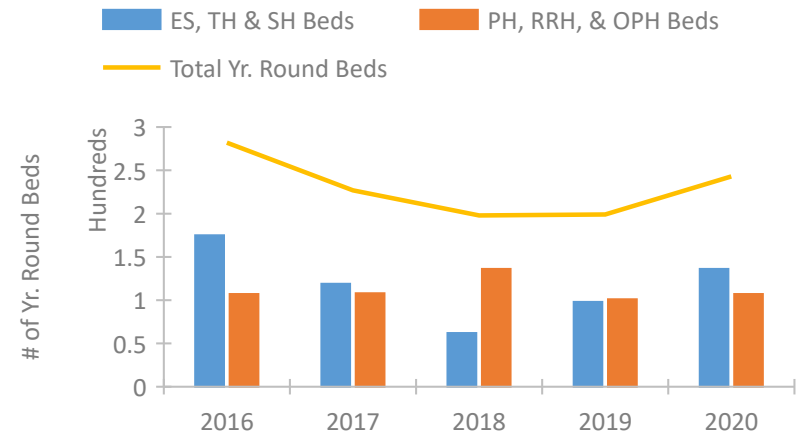


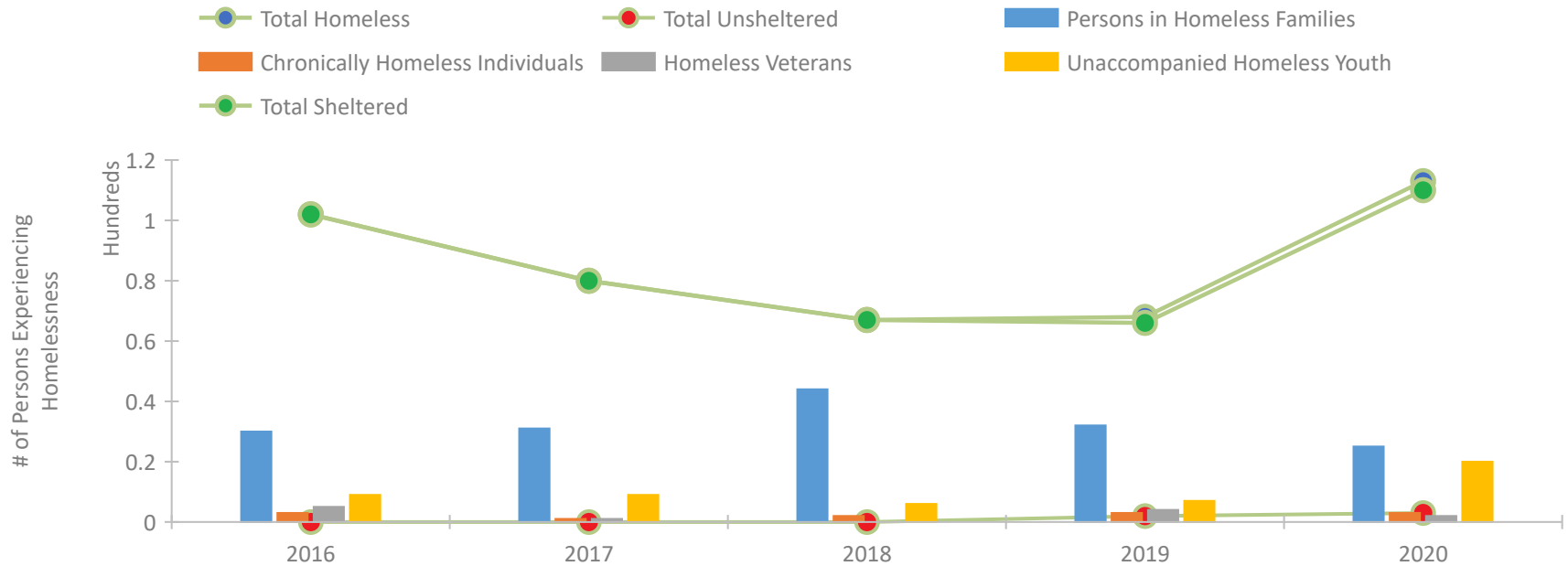
CoC Performance Profile IL-519 West Central Illinois CoC



Housing Inventory Count by Program Type

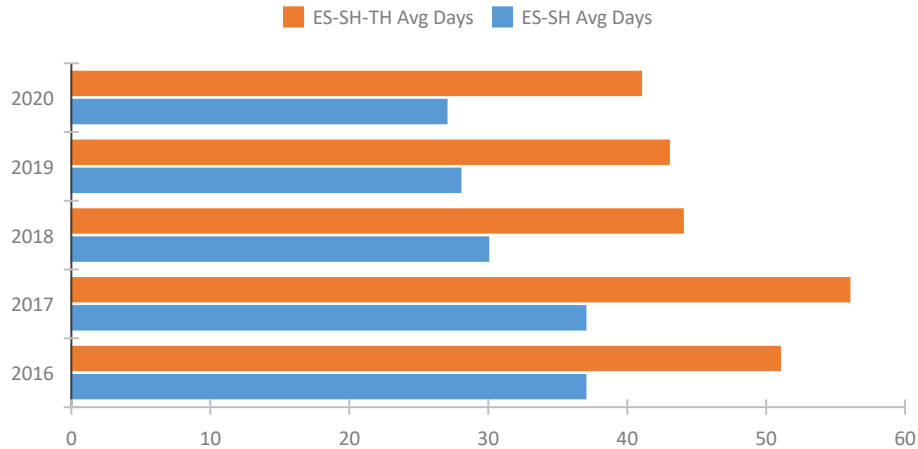


Homeless Population – Point-in-Time (PIT) Count

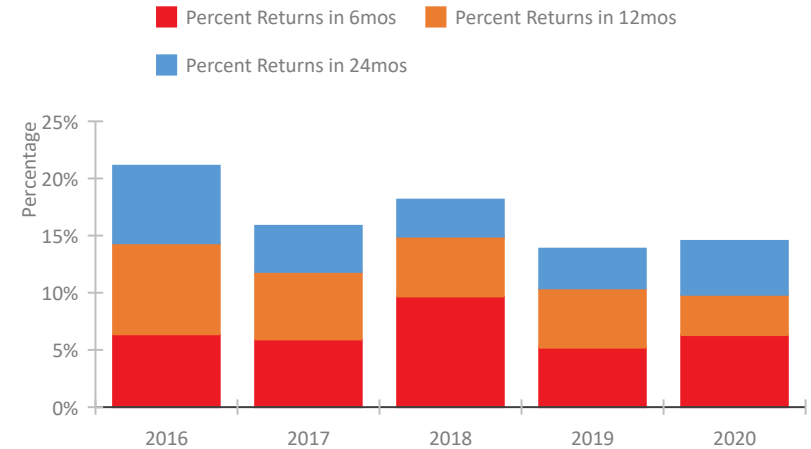


CoC Performance Profile IL-519 West Central Illinois CoC

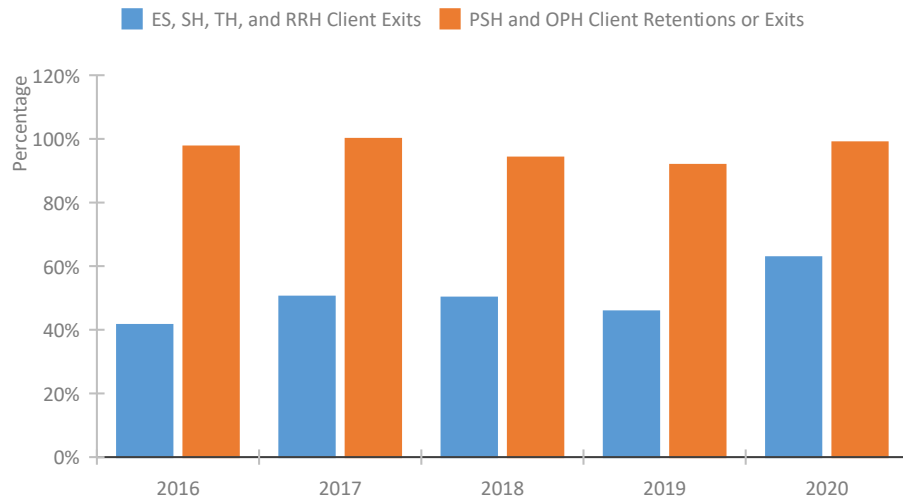
Length of Time Homeless



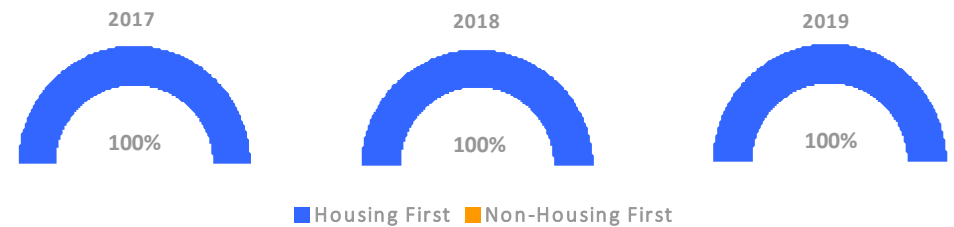
Returns to Homelessness Over Time



Exits to Permanent Housing by Program Type



Proportion of Housing First Projects by Year*



Number of Projects by Year			
	2017	2018	2019
Housing First Projects	6	6	7
Non-Housing First Projects	0	0	0

*In 2020 HUD awarded renewal projects noncompetitively, therefore no new data was collected and Housing First data remains the same from 2019 to 2020.

Data Summary: IL-519 West Central Illinois CoC

Point-In-Time Count Summary

	2016	2017	2018	2019	2020	2019-20 Change	% Change
Number of Sheltered Persons in Families	30	31	44	32	25	-7	-22%
Number of Unsheltered Persons in Families	0	0	0	0	0	0	--
Number of Sheltered Individuals	72	49	23	34	85	51	150%
Number of Unsheltered Individuals	0	0	0	2	3	1	50%
Total Homeless Persons	102	80	67	68	113	45	66%
Number of Sheltered Families	10	12	14	12	10	-2	-17%
Number of Unsheltered Families	0	0	0	0	0	0	--
Number of Total Families	10	12	14	12	10	-2	-17%
Sheltered Chronically Homeless Individuals	3	1	2	2	3	1	50%
Unsheltered Chronically Homeless Individuals	0	0	0	1	0	-1	-100%
Total Chronically Homeless Individuals	3	1	2	3	3	0	-0%
Sheltered Veterans	5	1	0	3	2	-1	-33%
Unsheltered Veterans	0	0	0	1	0	-1	-100%
Total Veterans	5	1	0	4	2	-2	-50%
Sheltered Unaccompanied Youth (up to 24)	9	9	6	7	20	13	186%
Unsheltered Unaccompanied Youth (up to 24)	0	0	0	0	0	0	--
Total Unaccompanied Youth (up to 24)	9	9	6	7	20	13	186%

System Performance Measures Summary

	2016	2017	2018	2018	2020	2019-20 Change	% Change
Average Length of Time Homeless (days)	51	56	44	43	41	-2	-4.7%
Rate People Return to Homelessness in 6 Months	6.4%	5.9%	9.7%	5.2%	6.3%	1.1%	N/A
Number of People who are Homeless for the First Time	441	348	415	398	386	-12	-3%
Rate People Exit from ES, SH, TH, and RRH to PH	41.5%	50.4%	50.1%	45.8%	62.8%	17%	N/A
Rate People in PSH and OPH Retain or Exit to PH	97.6%	100.0%	94.1%	91.8%	98.9%	7.1%	N/A

Housing Inventory Count Summary

	2016	2017	2018	2019	2020	2019-20 Change	% Change
Emergency Shelter (ES)	81	54	42	76	84	8	11%
Transitional Housing (TH)	94	65	20	22	52	30	136%
Permanent Supportive Housing (PSH)	107	108	101	101	101	0	-0%
Rapid Re-Housing (RRH)	--	--	35	0	6	6	100%

Award Summary

	2016	2017	2018	2019	2020	2019-20 Change	% Change
Continuum of Care (CoC)	\$650,720	\$660,511	\$665,749	\$645,899	\$654,905	\$9,006	1%
ESG (IL state recipient - no direct funding)	\$4,713,992	\$5,594,009	\$4,612,743	\$4,935,064	\$5,266,395	\$331,331	7%