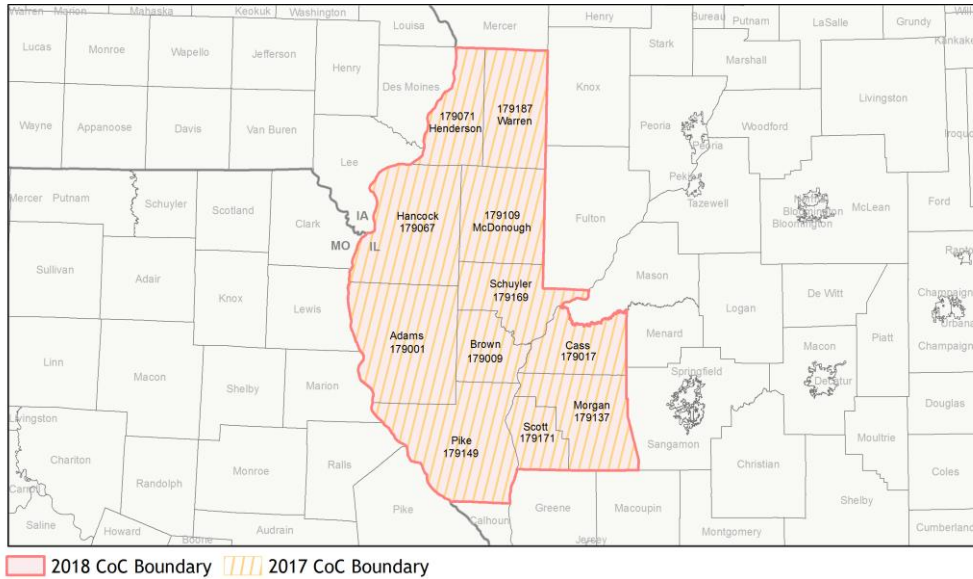
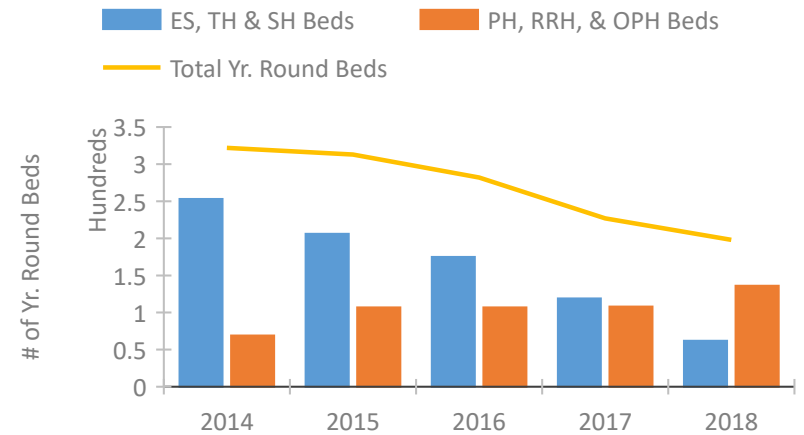


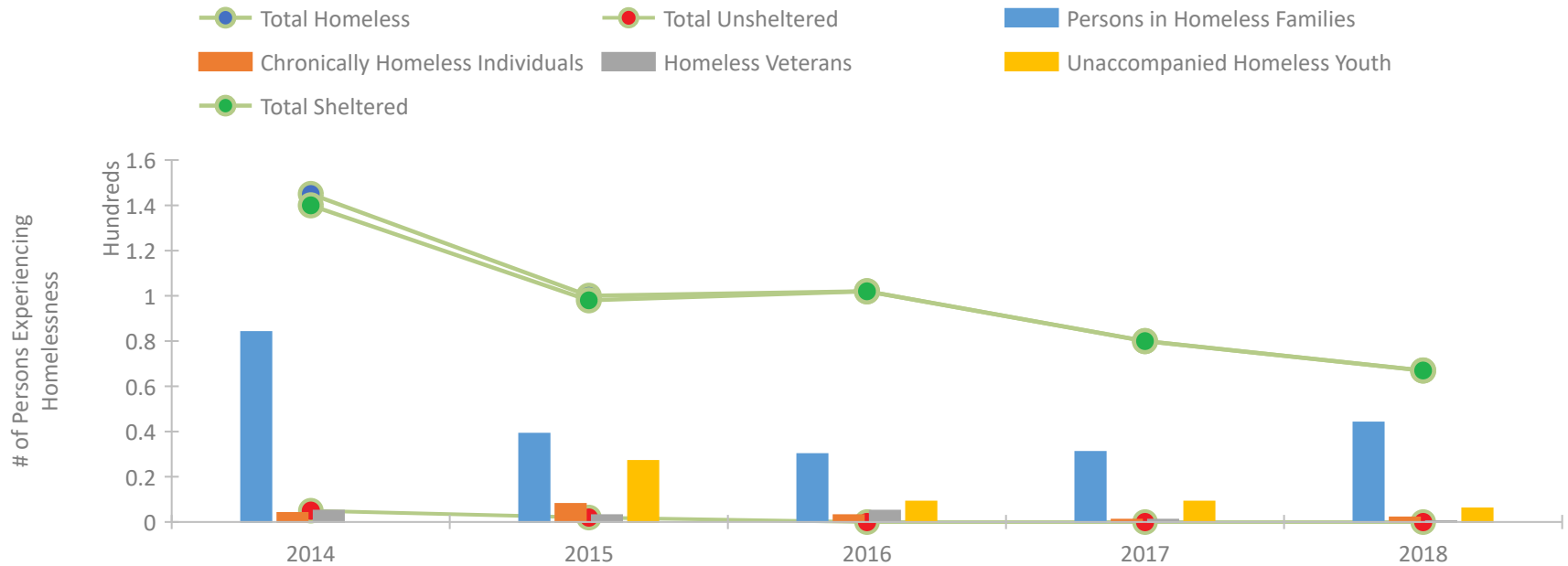
CoC Performance Profile IL-519 West Central Illinois CoC



Housing Inventory Count by Program Type

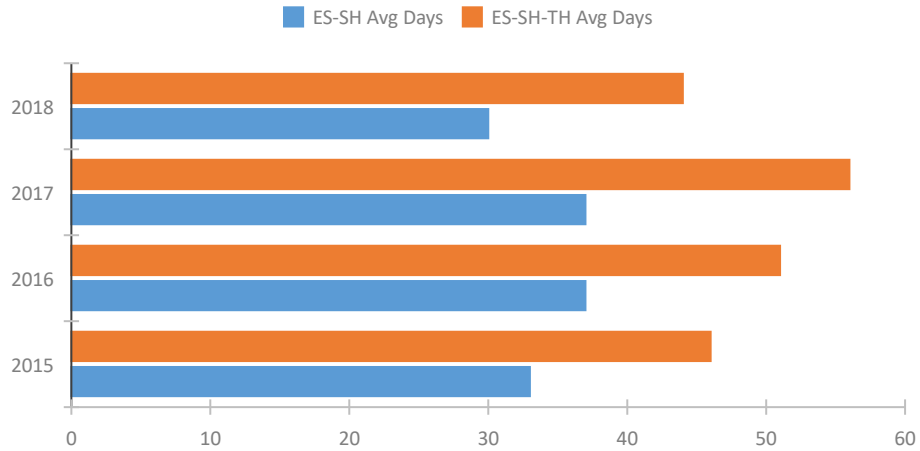


Homeless Population – Point-in-Time (PIT) Count

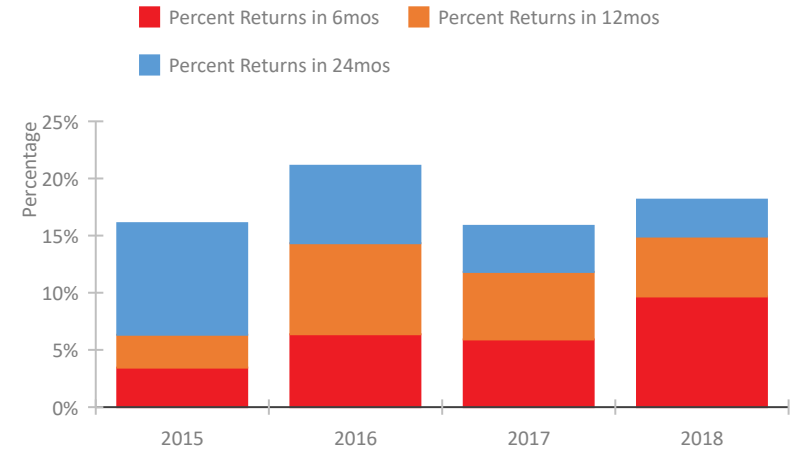


CoC Performance Profile IL-519 West Central Illinois CoC

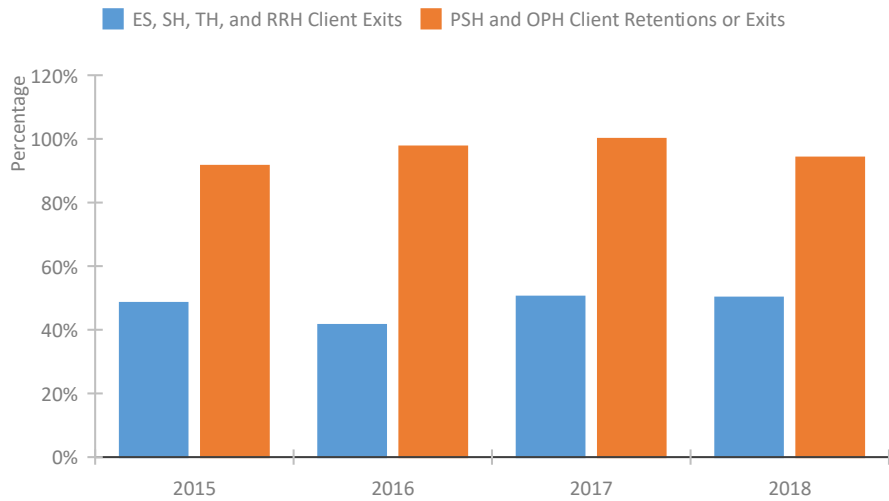
Length of Time Homeless



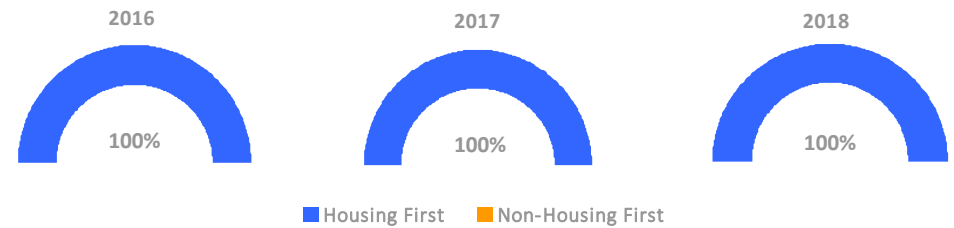
Returns to Homelessness Over Time



Exits to Permanent Housing by Program Type



Proportion of Housing First Projects by Year



Number of Projects by Year

	2016	2017	2018
Housing First Projects	7	6	6
Non-Housing First Projects	0	0	0

Data Summary: IL-519 West Central Illinois CoC

Point-In-Time Count Summary

	2014	2015	2016	2017	2018	2017-18 Change	% Change
Number of Sheltered Persons in Families	84	39	30	31	44	13	42%
Number of Unsheltered Persons in Families	0	0	0	0	0	0	--
Number of Sheltered Individuals	56	59	72	49	23	-26	-53%
Number of Unsheltered Individuals	5	2	0	0	0	0	--
Total Homeless Persons	145	100	102	80	67	-13	-16%
Number of Sheltered Families	29	12	10	12	14	2	17%
Number of Unsheltered Families	0	0	0	0	0	0	--
Number of Total Families	29	12	10	12	14	2	17%
Sheltered Chronically Homeless Individuals	4	8	3	1	2	1	100%
Unsheltered Chronically Homeless Individuals	0	0	0	0	0	0	--
Total Chronically Homeless Individuals	4	8	3	1	2	1	100%
Sheltered Veterans	5	3	5	1	0	-1	-100%
Unsheltered Veterans	0	0	0	0	0	0	--
Total Veterans	5	3	5	1	0	-1	-100%
Sheltered Unaccompanied Youth (up to 24)	--	26	9	9	6	-3	-33%
Unsheltered Unaccompanied Youth (up to 24)	--	1	0	0	0	0	--
Total Unaccompanied Youth (up to 24)	--	27	9	9	6	-3	-33%

System Performance Measures Summary

	2014	2015	2016	2017	2018	2017-18 Change	% Change
Average Length of Time Homeless (days)	N/A	46	51	56	44	-12	-21.4%
Rate People Return to Homelessness in 6 Months	N/A	3.4%	6.4%	5.9%	9.7%	3.8%	N/A
Number of People who are Homeless for the First Time	N/A	605	441	348	415	67	19.3%
Rate People Exit from ES, SH, TH, and RRH to PH	N/A	48.4%	41.5%	50.4%	50.1%	-0.3%	N/A
Rate People in PSH and OPH Retain or Exit to PH	N/A	91.5%	97.6%	100.0%	94.1%	-5.9%	N/A

Housing Inventory Count Summary

	2014	2015	2016	2017	2018	2017-18 Change	% Change
Emergency Shelter (ES)	92	81	81	54	42	-12	-22%
Transitional Housing (TH)	161	125	94	65	20	-45	-69%
Permanent Supportive Housing (PSH)	69	107	107	108	101	-7	-6%
Rapid Re-Housing (RRH)	--	--	--	--	35	--	--

Award Summary

	2014	2015	2016	2017	2018	2017-18 Change	% Change
Continuum of Care (CoC)	\$639,734	\$650,720	\$650,720	\$660,511	\$665,749	\$5,238	1%
ESG (IL state recipient - no direct funding)	\$4,574,559	\$4,711,779	\$4,713,992	\$5,594,009	\$4,612,743	(\$981,266)	-18%